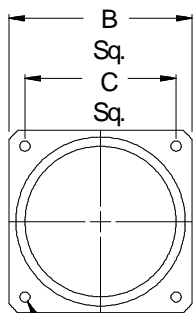
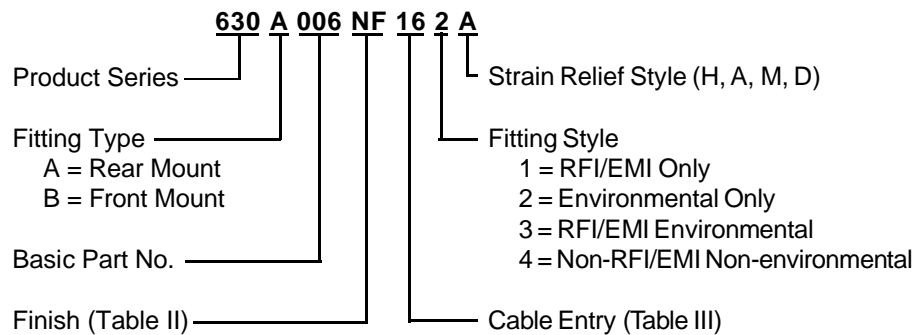
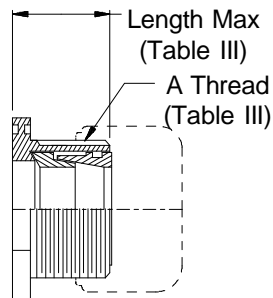


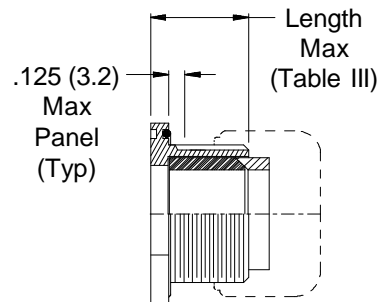
Single Overall EMI/RFI Shield Termination



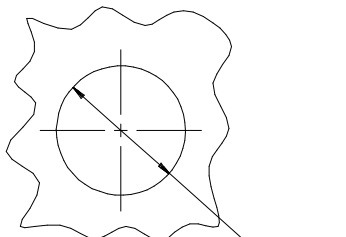
D Mounting Holes
(4 Places)



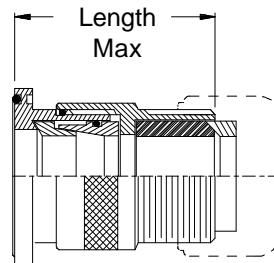
**Style 1 - RF/EMI
Type B - Front Mount**



**Style 2 - Environmental
Type A - Rear Mount**



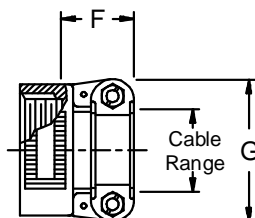
Panel Cut-Out



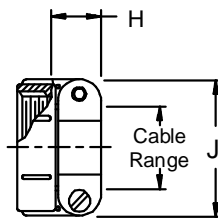
**Style 3 -
RF/EMI Environmental
Type B - Front Mount**

1. Metric dimensions (mm) are indicated in parentheses.
2. Cable range is defined as the accommodations range for the wire bundle or cable. Dimensions shown are not intended for inspection criteria.

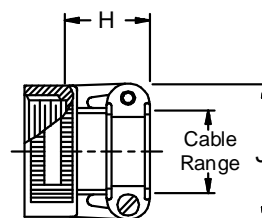
STYLE H
Heavy Duty



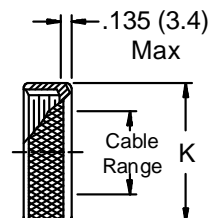
STYLE A
Medium Duty



STYLE M
Medium Duty



STYLE D
Medium Duty



630-006
EMI/RFI Environmental Bulkhead Feed-Through
 with Strain Relief
 Front and Rear Panel Mount - Straight



See inside back cover fold-out or page 14 for Table II.

Dash No.	Clamp Style	Clamp Size	Cable Range		A Thread		B		C Sq.		D Dia -.000	E Dia -.000
			Min	Max	Unified	Dim	±.010	(±.3)	+ .015 (+.4)	+ .030 (+.8)		
01	1, 2	03	.157 (4.0)	.250 (6.4)	1/2-28	.885 (22.5)	.593 (15.1)	.120 (3.0)	.250 (6.4)			
02	3	03	.157 (4.0)	.250 (6.4)	1/2-28	.885 (22.5)	.593 (15.1)	.120 (3.0)	.250 (6.4)			
03	1,2	04	.187 (4.7)	.312 (7.9)	5/8-24	1.104 (28.0)	.812 (20.6)	.120 (3.0)	.312 (7.9)			
04	3	04	.187 (4.7)	.312 (7.9)	5/8-24	1.104 (28.0)	.812 (20.6)	.120 (3.0)	.312 (7.9)			
05	1, 2	06	.281 (7.1)	.437 (11.1)	3/4-20	1.197 (30.4)	.906 (23.0)	.120 (3.0)	.437 (11.1)			
06	3	06	.281 (7.1)	.437 (11.1)	3/4-20	1.197 (30.4)	.906 (23.0)	.120 (3.0)	.437 (11.1)			
07	1,2	08	.344 (8.7)	.562 (14.3)	7/8-20	1.291 (32.8)	.968 (24.6)	.120 (3.0)	.562 (14.3)			
08	3	08	.344 (8.7)	.562 (14.3)	7/8-20	1.291 (32.8)	.968 (24.6)	.120 (3.0)	.562 (14.3)			
09	1, 2	10	.375 (9.5)	.625 (15.9)	1-20	1.385 (35.2)	1.062 (27.0)	.120 (3.0)	.625 (15.9)			
10	3	10	.375 (9.5)	.625 (15.9)	1-20	1.385 (35.2)	1.062 (27.0)	.120 (3.0)	.625 (15.9)			
11	1,2	12	.438 (11.1)	.750 (19.1)	1 3/16-18	1.635 (41.5)	1.250 (31.8)	.120 (3.0)	.750 (19.1)			
12	3	12	.438 (11.1)	.750 (19.1)	1 3/16-18	1.635 (41.5)	1.250 (31.8)	.120 (3.0)	.750 (19.1)			
13	1, 2	16	.625 (15.9)	.937 (23.8)	1 7/16-18	1.760 (44.7)	1.375 (34.9)	.147 (3.7)	.937 (23.8)			
14	3	16	.625 (15.9)	.937 (23.8)	1 7/16-18	1.760 (44.7)	1.375 (34.9)	.147 (3.7)	.937 (23.8)			
15	1,2	20	.875 (22.2)	1.250 (31.8)	1 3/4-18	2.010 (51.1)	1.562 (39.7)	.147 (3.7)	1.250 (31.8)			
16	3	20	.875 (22.2)	1.250 (31.8)	1 3/4-18	2.010 (51.1)	1.562 (39.7)	.147 (3.7)	1.250 (31.8)			
17	1, 2	24	1.000 (25.4)	1.375 (34.9)	2-18	2.260 (57.4)	1.750 (44.5)	.173 (4.4)	1.375 (34.9)			
18	3	24	1.000 (25.4)	1.375 (34.9)	2-18	2.260 (57.4)	1.750 (44.5)	.173 (4.4)	1.375 (34.9)			
19	1,2	28	1.250 (31.8)	1.625 (41.3)	2 1/4-16	2.510 (63.8)	1.938 (49.2)	.173 (4.4)	1.625 (41.3)			
20	3	28	1.250 (31.8)	1.625 (41.3)	2 1/4-16	2.510 (63.8)	1.938 (49.2)	.173 (4.4)	1.625 (41.3)			
21	1, 2	32	1.437 (36.5)	1.875 (47.6)	2 1/2-16	2.781 (70.6)	2.188 (55.6)	.173 (4.4)	1.875 (47.6)			
22	3	32	1.437 (36.5)	1.875 (47.6)	2 1/2-16	2.781 (70.6)	2.188 (55.6)	.173 (4.4)	1.875 (47.6)			
23	1,2	40	1.875 (47.6)	2.375 (60.3)	3-16	3.281 (83.3)	2.625 (66.7)	.173 (4.4)	2.375 (60.3)			
24	3	40	1.875 (47.6)	2.375 (60.3)	3-16	3.281 (83.3)	2.625 (66.7)	.173 (4.4)	2.375 (60.3)			

Dash No.	Style	F Max	G Max	H Max	J Max	K Max	Length Max
01	1, 2	---	---	.760 (19.3)	.843 (21.4)	.630 (16.0)	.971 (24.7)
02	3	---	---	.760 (19.3)	.843 (21.4)	.630 (16.0)	1.820 (46.2)
03	1,2	.780 (19.8)	.957 (24.3)	.760 (19.3)	.906 (23.0)	.755 (19.2)	.971 (24.7)
04	3	.780 (19.8)	.957 (24.3)	.760 (19.3)	.906 (23.0)	.755 (19.2)	1.820 (46.2)
05	1, 2	.780 (19.8)	1.145 (29.1)	.760 (19.3)	1.093 (27.8)	.942 (23.9)	.971 (24.7)
06	3	.780 (19.8)	1.145 (29.1)	.760 (19.3)	1.093 (27.8)	.942 (23.9)	1.820 (46.2)
07	1,2	.780 (19.8)	1.332 (33.8)	.760 (19.3)	1.187 (30.1)	1.067 (27.1)	.971 (24.7)
08	3	.780 (19.8)	1.332 (33.8)	.760 (19.3)	1.187 (30.1)	1.067 (27.1)	1.820 (46.2)
09	1, 2	.780 (19.8)	1.332 (33.8)	.760 (19.3)	1.281 (32.5)	1.192 (30.3)	.971 (24.7)
10	3	.780 (19.8)	1.332 (33.8)	.760 (19.3)	1.281 (32.5)	1.192 (30.3)	1.820 (46.2)
11	1,2	.811 (20.6)	1.551 (39.4)	.760 (19.3)	1.500 (38.1)	1.380 (35.1)	1.031 (26.2)
12	3	.811 (20.6)	1.551 (39.4)	.760 (19.3)	1.500 (38.1)	1.380 (35.1)	1.820 (46.2)
13	1, 2	.905 (23.0)	1.770 (45.0)	1.073 (27.3)	1.719 (43.7)	1.535 (39.0)	1.031 (26.2)
14	3	.905 (23.0)	1.770 (45.0)	1.073 (27.3)	1.719 (43.7)	1.535 (39.0)	1.820 (46.2)
15	1,2	1.092 (27.7)	2.113 (53.7)	1.323 (33.6)	2.062 (52.4)	1.848 (46.9)	1.031 (26.2)
16	3	1.092 (27.7)	2.113 (53.7)	1.323 (33.6)	2.062 (52.4)	1.848 (46.9)	1.820 (46.2)
17	1, 2	1.124 (28.5)	2.363 (60.0)	1.323 (33.6)	2.312 (58.7)	2.255 (57.3)	1.095 (27.8)
18	3	1.124 (28.5)	2.363 (60.0)	1.323 (33.6)	2.312 (58.7)	2.255 (57.3)	1.820 (46.2)
19	1,2	1.399 (35.5)	2.770 (70.4)	1.572 (39.9)	2.719 (69.1)	2.505 (63.6)	1.095 (27.8)
20	3	1.399 (35.5)	2.770 (70.4)	1.572 (39.9)	2.719 (69.1)	2.505 (63.6)	1.820 (46.2)
21	1, 2	1.399 (35.5)	3.020 (76.7)	1.572 (39.9)	2.969 (75.4)	2.755 (70.0)	1.095 (27.8)
22	3	1.399 (35.5)	3.020 (76.7)	1.572 (39.9)	2.969 (75.4)	2.755 (70.0)	1.940 (49.3)
23	1,2	---	---	1.572 (39.9)	3.531 (89.7)	3.255 (82.7)	1.220 (31.0)
24	3	---	---	1.572 (39.9)	3.531 (89.7)	3.255 (82.7)	2.060 (52.3)

X-ON Electronics

Largest Supplier of Electrical and Electronic Components

Click to view similar products for [Circular MIL Spec Tools, Hardware & Accessories](#) *category:*

Click to view products by [Glenair](#) *manufacturer:*

Other Similar products are found below :

[0113-201-2025](#) [600-079-06](#) [600-146-06](#) [M10-101982-143](#) [M10-101982-163](#) [M10-101983-183](#) [M10-150912-083](#) [M10-454396-008](#)
[602GB18808](#) [CS3102A-22-14PW](#) [M2887615-CD](#) [627-009](#) [M38999/9-19B](#) [630A007NF083A](#) [630B007M051A](#) [630BJ003NF032H](#) [637-](#)
[149NF04B](#) [M39029/29-215](#) [6408-203V-09273](#) [6426-201-11343](#) [650FS002NF16](#) [660-008NF14S7-01](#) [660-009M22H8-03](#) [660-013NF19U6-](#)
[210](#) [660-015M10S6-17](#) [660-015NF10S5-01](#) [660-015NF14R3.5-01](#) [660-023NF19H6-19](#) [660-024NF11S12-01](#) [660-024NF11S3-01](#) [660-](#)
[024NF17S4-109](#) [660-050XM17F4-01](#) [660-068NF25R6-30G](#) [660-070M23S8-04](#) [660-073MTCH9-20](#) [M83723/61-18W](#) [M83723/61-218R](#)
[M83723/61-224W](#) [667-084-23C](#) [667-084-35C](#) [667-224NF16](#) [687-697NF-1](#) [M85049/94-10-A](#) [M85049/96-7-A](#) [M855282-10A01A](#)
[M85528/2-10B](#) [M855282-18A01A](#) [M85528/2-22A01A](#) [M85528/2-22AA](#) [710HS460NF2508](#)