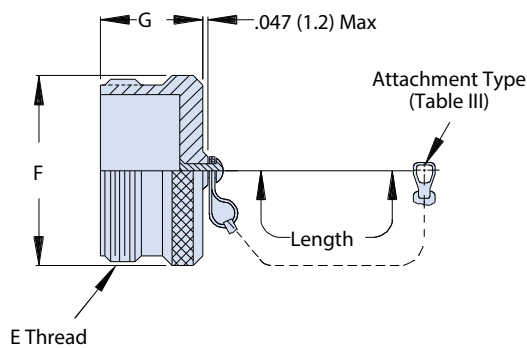




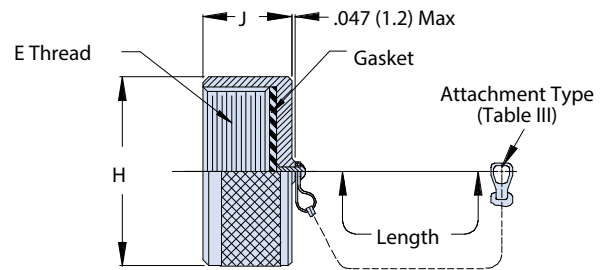
660-004 (plug) - 660-005 (receptacle) protective covers for MIL-DTL-5015 type connectors

MIL-DTL-5015

How To Order						
Sample Part Number	660-004	M	16	S	6	-04
Series/Basic Part No.	660-004 = Plug 660-005 = Receptacle					
Finish	See Material and Finish Table					
Shell Size	16 and 18; See Dimensions Table					
Attachment Type	See Attachment Code Table					
Attachment Length	Length given in inches, e.g. 6 = 6 inches					
Ring or Eyelet Dash No.	Ring or Eyelet Dash Number. See Tables 1 thru 4 for Specific Dash No.					



660-004 Plug Cover



660-005 Receptacle Cover

Shell Size Dimensions									
Shell Size	E Thread	F Max		G Max		H Max		J Max	
		In	mm	In	mm	In	mm	In	mm
16	1-20 UNEF	1.062	(27.00)	0.844	(21.40)	1.188	(30.20)	0.465	(11.80)
18	11/8 - 18 UNEF	1.187	(30.10)	0.844	(21.40)	1.344	(34.10)	0.465	(11.80)

Material and Finish ¹	
NF	Cadmium, olive drab over electroless nickel (1000 hr.)
M	electroless nickel
ZN	Zinc-nickel alloy, olive drab
ZU	Cadmium plate, black

Attachment Code Table	
D	Bead Chain, Cres., Passivate
F	Wire Rope, Nylon Jacket
G	Nylon Rope
H	Wire Rope, Teflon Jacket
N	No Attachment
R	Wire Rope, PVC Jacket
S	#8 Sash Chain, Cres., Passivate
T	Wire Rope, No Jacket
U	Wire Rope, Polyurethane Jacket with Terminal

Eyelet Diameter Dash Number		
Dash No.	K Diameter ±.010 (0.3)	
	In	mm
01	0.140	(3.60)
02	0.182	(4.60)
03	0.191	(4.90)
04	0.197	(5.00)
05	0.167	(4.20)
06	0.125	(3.20)
07	0.218	(5.50)
09	0.156	(4.00)
00	No Eyelet	

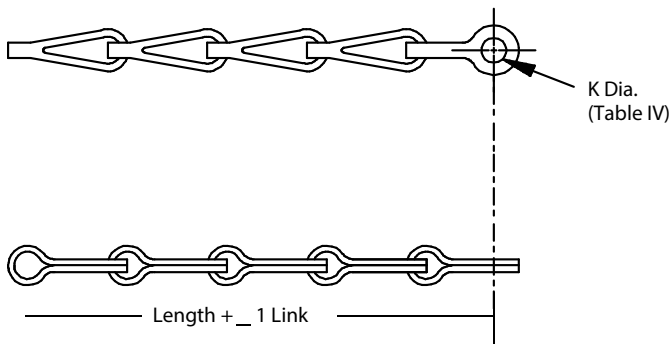
NOTES

1. Additional finish options available, consult factory

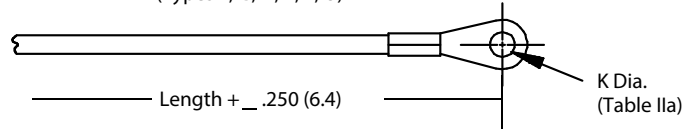


EYELET STYLE ATTACHMENTS

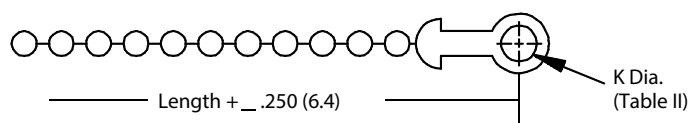
SASH CHAIN
(Type S)



ROPE
(Types F, G, H, R, T, U)

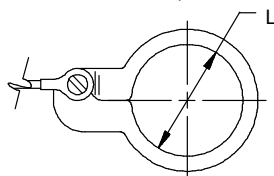


BEAD CHAIN
(Type D)

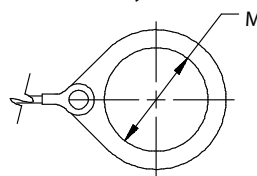


RING STYLE ATTACHMENTS

SPLIT RING - Style C



SOLID RING - Style B



SOLID RING - Style A

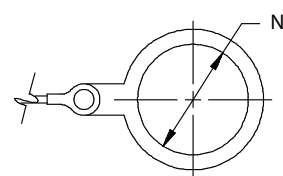


Table I: Split Ring Style C

Dash No.	L Dia. ±.015 (0.4)		Dash No.	L Dia. ±.015 (0.4)	
	In	mm		In	mm
50	0.425	10.80	74	1.625	41.30
52	0.485	12.30	76	1.750	44.50
54	0.640	16.30	78	1.875	47.60
56	0.750	19.10	80	1.980	50.30
58	0.890	22.60	82	2.060	52.30
60	1.015	25.80	84	2.235	56.80
62	1.095	27.80	86	2.310	58.70
64	1.130	28.70	88	2.475	62.90
66	1.250	31.80	90	2.655	67.40
68	1.350	34.30	92	2.810	71.40
70	1.390	35.30	94	3.045	77.30
72	1.485	37.70			

Table II: Solid Ring Style B

Dash No.	M Dia. ±.015 (0.4)		Dash No.	M Dia. ±.015 (0.4)	
	In	mm		In	mm
08	0.468	11.90	24	1.484	37.70
10	0.593	15.10	25	1.577	40.10
12	0.718	18.20	27	1.640	41.70
13	0.765	19.40	28	1.687	42.80
14	0.844	21.40	29	1.765	44.80
15	0.890	22.60	30	1.890	48.00
16	0.968	24.60	31	1.953	49.60
17	1.015	25.80	32	1.968	50.00
18	1.093	27.80	33	2.077	52.80
19	1.140	29.00	35	2.140	54.40
20	1.203	30.60	36	2.187	55.50
21	1.265	32.10	40	2.406	61.10
22	1.343	34.10	44	2.656	67.50
23	1.453	36.90	48	3.031	77.00
			118	0.310	7.90

Table III: Solid Ring Style A

Dash No.	M Dia. ±.015 (0.4)		Dash No.	M Dia. ±.015 (0.4)	
	In	mm		In	mm
095	0.312	7.9	109	1.266	32.2
100	0.391	9.9	209	1.312	33.3
101	0.516	13.1	110	1.391	35.3
102	0.583	14.8	210	1.438	36.5
103	0.641	16.3	111	1.521	38.6
104	0.708	18.0	211	1.536	39.0
105	0.766	19.5	112	1.641	41.7
205	0.788	20.0	113	1.766	44.9
106	0.896	22.2	213	1.812	46.0
206	0.907	23.0	114	1.891	48.0
107	1.016	25.8	214	1.938	49.2
207	1.025	26.0	115	2.078	52.8
108	1.141	29.0	116	2.406	61.1
308	1.188	30.2	117	2.510	63.8
208	1.203	30.6			

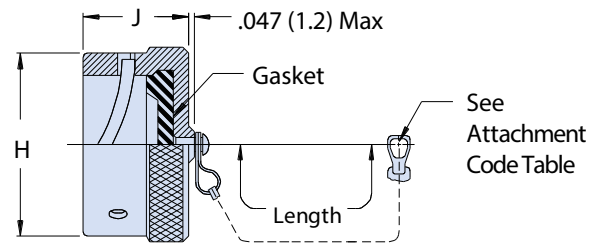
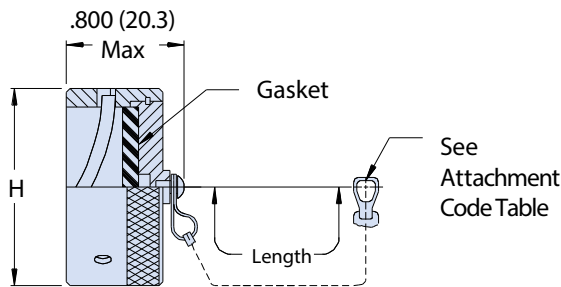
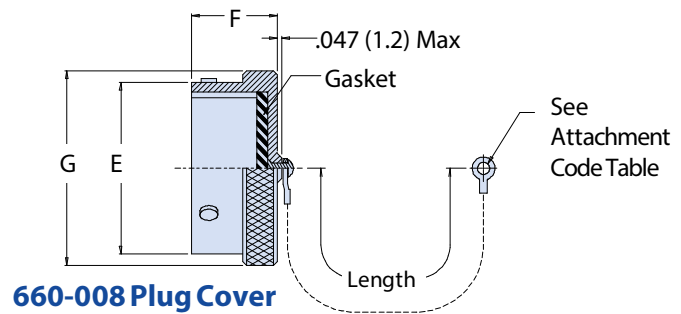


660-004 (plug) - 660-005 (receptacle) protective covers for MIL-DTL-26482 type connectors

MIL-DTL-26482

How To Order						
Sample Part Number	660-008	M	20	S	6	-04
Series/Basic Part No.	660-008 = Plug 660-009 = Receptacle 661-001 = EMI Receptacle					
Finish	See Material and Finish Table					
Shell Size	16 and 18; See Dimensions Table					
Attachment Type	See Attachment Code Table					
Attachment Length	Length given in inches, e.g. 6 = 6 inches					
Ring or Eyelet Dash No.	Ring or Eyelet Dash Number. See Tables 1 thru 4 for Specific Dash No.					

Attachment Code Table	
D	Bead Chain, Cres., Passivate
F	Wire Rope, Nylon Jacket
G	Nylon Rope
H	Wire Rope, Teflon Jacket
N	No Attachment
R	Wire Rope, PVC Jacket
S	#8 Sash Chain, Cres., Passivate
T	Wire Rope, No Jacket
U	Wire Rope, Polyurethane Jacket with Terminal



661-001 EMI/RFI Receptacle Cover

660-009 Receptacle Cover

Shell Size	Dimensions									
	E Dia.		F Max		G Dia Max		H Dia Max		J Max	
16	1.000	(25.40)	0.562	(14.30)	1.250	(31.80)	1.250	(31.80)	0.562	(14.30)
18	1.125	(28.60)	0.562	(14.30)	1.375	(34.90)	1.375	(34.90)	0.562	(14.30)

Dash No.	Eyelet Diameter Dash Number	
	K Diameter ±.010 (0.3)	
	In	mm
01	0.140	(3.60)
02	0.182	(4.60)
03	0.191	(4.90)
04	0.197	(5.00)
05	0.167	(4.20)
06	0.125	(3.20)
07	0.218	(5.50)
09	0.156	(4.00)
00	No Eyelet	

Material and Finish ¹	
NF	Cadmium, olive drab over electroless nickel (1000 hr.)
M	electroless nickel
ZN	Zinc-nickel alloy, olive drab
ZU	Cadmium plate, black

NOTES

1. Additional finish options available, consult factory



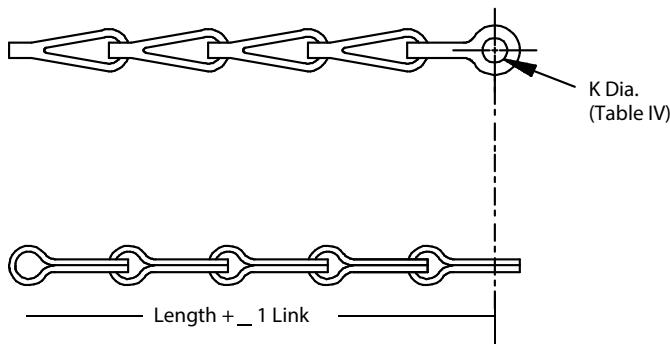
RJ45 ETHERNET AND USB 2.0 Tools and Accessories



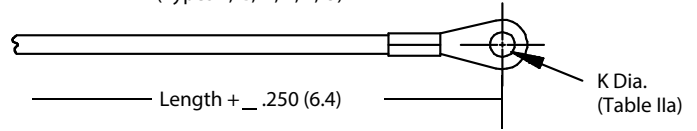
660-004 (plug) - 660-005 (receptacle) protective covers
for MIL-DTL-26482 type connectors

EYELET STYLE ATTACHMENTS

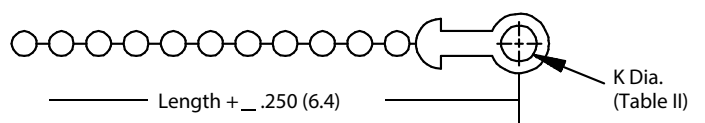
SASH CHAIN
(Type S)



ROPE
(Types F, G, H, R, T, U)

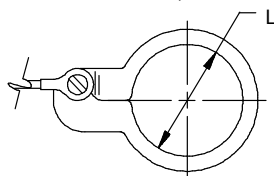


BEAD CHAIN
(Type D)

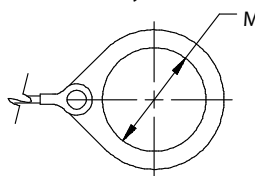


RING STYLE ATTACHMENTS

SPLIT RING - Style C



SOLID RING - Style B



SOLID RING - Style A

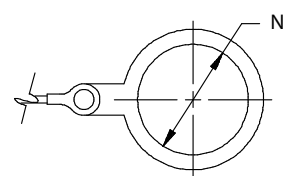


Table I: Split Ring Style C

Dash No.	L Dia. ±.015 (0.4)		Dash No.	L Dia. ±.015 (0.4)	
	In	mm		In	mm
50	0.425	10.80	74	1.625	41.30
52	0.485	12.30	76	1.750	44.50
54	0.640	16.30	78	1.875	47.60
56	0.750	19.10	80	1.980	50.30
58	0.890	22.60	82	2.060	52.30
60	1.015	25.80	84	2.235	56.80
62	1.095	27.80	86	2.310	58.70
64	1.130	28.70	88	2.475	62.90
66	1.250	31.80	90	2.655	67.40
68	1.350	34.30	92	2.810	71.40
70	1.390	35.30	94	3.045	77.30
72	1.485	37.70			

Table II: Solid Ring Style B

Dash No.	M Dia. ±.015 (0.4)		Dash No.	M Dia. ±.015 (0.4)	
	In	mm		In	mm
08	0.468	11.90	24	1.484	37.70
10	0.593	15.10	25	1.577	40.10
12	0.718	18.20	27	1.640	41.70
13	0.765	19.40	28	1.687	42.80
14	0.844	21.40	29	1.765	44.80
15	0.890	22.60	30	1.890	48.00
16	0.968	24.60	31	1.953	49.60
17	1.015	25.80	32	1.968	50.00
18	1.093	27.80	33	2.077	52.80
19	1.140	29.00	35	2.140	54.40
20	1.203	30.60	36	2.187	55.50
21	1.265	32.10	40	2.406	61.10
22	1.343	34.10	44	2.656	67.50
23	1.453	36.90	48	3.031	77.00
			118	0.310	7.90

Table III: Solid Ring Style A

Dash No.	M Dia. ±.015 (0.4)		Dash No.	M Dia. ±.015 (0.4)	
	In	mm		In	mm
095	0.312	7.9	109	1.266	32.2
100	0.391	9.9	209	1.312	33.3
101	0.516	13.1	110	1.391	35.3
102	0.583	14.8	210	1.438	36.5
103	0.641	16.3	111	1.521	38.6
104	0.708	18.0	211	1.536	39.0
105	0.766	19.5	112	1.641	41.7
205	0.788	20.0	113	1.766	44.9
106	0.896	22.2	213	1.812	46.0
206	0.907	23.0	114	1.891	48.0
107	1.016	25.8	214	1.938	49.2
207	1.025	26.0	115	2.078	52.8
108	1.141	29.0	116	2.406	61.1
308	1.188	30.2	117	2.510	63.8
208	1.203	30.6			

X-ON Electronics

Largest Supplier of Electrical and Electronic Components

Click to view similar products for [Circular MIL Spec Tools, Hardware & Accessories](#) *category:*

Click to view products by [Glenair](#) *manufacturer:*

Other Similar products are found below :

[0113-201-2025](#) [600-079-06](#) [600-146-06](#) [M10-101983-183](#) [M10-454396-008](#) [602GB18808](#) [CS3102A-22-14PW](#) [M2887615-CD](#) [627-009](#)
[M38999/9-19B](#) [630A007NF083A](#) [630B007M051A](#) [630BJ003NF032H](#) [637-149NF04B](#) [M39029/29-215](#) [6408-203V-09273](#) [6426-201-11343](#)
[650FS002NF16](#) [660-008NF14S7-01](#) [660-009M22H8-03](#) [660-013NF19U6-210](#) [660-015M10S6-17](#) [660-015NF10S5-01](#) [660-015NF14R3.5-01](#)
[660-023NF19H6-19](#) [660-024NF11S12-01](#) [660-024NF11S3-01](#) [660-024NF17S4-109](#) [660-050XM17F4-01](#) [660-068NF25R6-30G](#) [660-](#)
[070M23S8-04](#) [660-073MTCH9-20](#) [M83723/61-18W](#) [M83723/61-218R](#) [M83723/61-224W](#) [667-084-23C](#) [667-084-35C](#) [667-224NF16](#) [687-](#)
[697NF-1](#) [M85049/94-10-A](#) [M85049/96-7-A](#) [M855282-10A01A](#) [M85528/2-10B](#) [M855282-18A01A](#) [M85528/2-22A01A](#) [M85528/2-22AA](#)
[710HS460NF2508](#) [780-001-22G12-SK](#) [780-002-19G12-SK](#) [780-002-20G12SK](#)