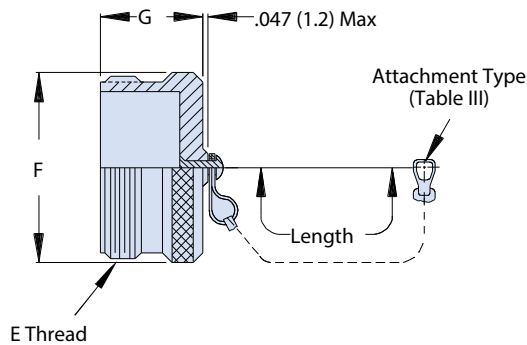




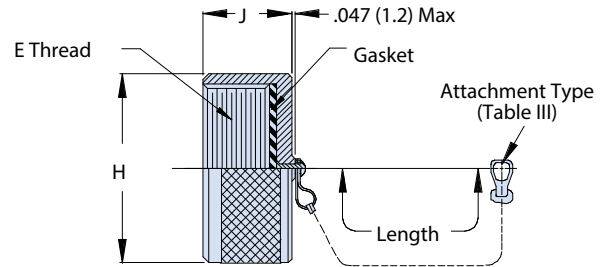
660-004 (plug) - 660-005 (receptacle) protective covers for MIL-DTL-5015 type connectors

MIL-DTL-5015

| How To Order | | | | | | |
|--------------------------------|---|----------|-----------|----------|----------|------------|
| Sample Part Number | 660-004 | M | 16 | S | 6 | -04 |
| Series/Basic Part No. | 660-004 = Plug 660-005 = Receptacle | | | | | |
| Finish | See Material and Finish Table | | | | | |
| Shell Size | 16 and 18; See Dimensions Table | | | | | |
| Attachment Type | See Attachment Code Table | | | | | |
| Attachment Length | Length given in inches, e.g. 6 = 6 inches | | | | | |
| Ring or Eyelet Dash No. | Ring or Eyelet Dash Number. See Tables 1 thru 4 for Specific Dash No. | | | | | |



660-004 Plug Cover



660-005 Receptacle Cover

| Shell Size Dimensions | | | | | | | | | |
|-----------------------|----------------|-------|---------|-------|---------|-------|---------|-------|---------|
| Shell Size | E Thread | F Max | | G Max | | H Max | | J Max | |
| | | In | mm | In | mm | In | mm | In | mm |
| 16 | 1-20 UNEF | 1.062 | (27.00) | 0.844 | (21.40) | 1.188 | (30.20) | 0.465 | (11.80) |
| 18 | 11/8 - 18 UNEF | 1.187 | (30.10) | 0.844 | (21.40) | 1.344 | (34.10) | 0.465 | (11.80) |

| Material and Finish ¹ | |
|----------------------------------|--|
| NF | Cadmium, olive drab over electroless nickel (1000 hr.) |
| M | electroless nickel |
| ZN | Zinc-nickel alloy, olive drab |
| ZU | Cadmium plate, black |

| Attachment Code Table | |
|-----------------------|--|
| D | Bead Chain, Cres., Passivate |
| F | Wire Rope, Nylon Jacket |
| G | Nylon Rope |
| H | Wire Rope, Teflon Jacket |
| N | No Attachment |
| R | Wire Rope, PVC Jacket |
| S | #8 Sash Chain, Cres., Passivate |
| T | Wire Rope, No Jacket |
| U | Wire Rope, Polyurethane Jacket with Terminal |

| Eyelet Diameter Dash Number | | |
|-----------------------------|------------------------|--------|
| Dash No. | K Diameter ±.010 (0.3) | |
| | In | mm |
| 01 | 0.140 | (3.60) |
| 02 | 0.182 | (4.60) |
| 03 | 0.191 | (4.90) |
| 04 | 0.197 | (5.00) |
| 05 | 0.167 | (4.20) |
| 06 | 0.125 | (3.20) |
| 07 | 0.218 | (5.50) |
| 09 | 0.156 | (4.00) |
| 00 | No Eyelet | |

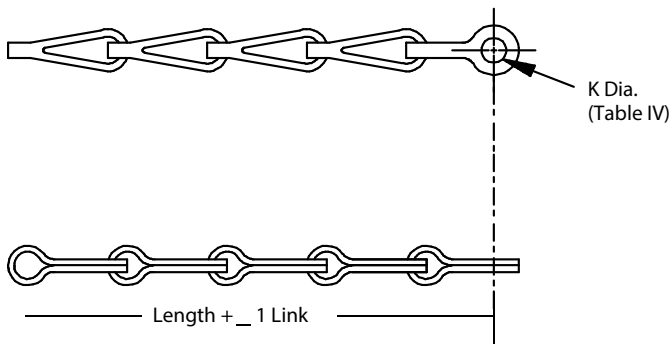
NOTES

1. Additional finish options available, consult factory

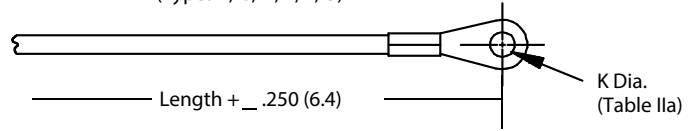


EYELET STYLE ATTACHMENTS

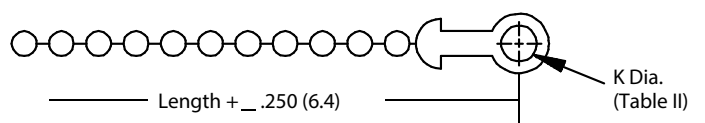
SASH CHAIN (Type S)



ROPE (Types F, G, H, R, T, U)

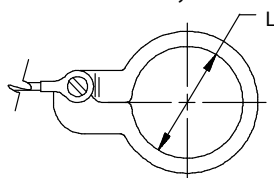


BEAD CHAIN (Type D)

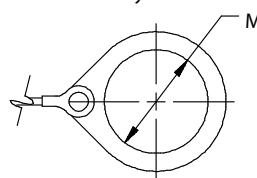


RING STYLE ATTACHMENTS

SPLIT RING - Style C



SOLID RING - Style B



SOLID RING - Style A

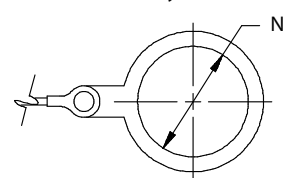


Table I: Split Ring Style C

| Dash No. | L Dia. ±.015 (0.4) | | Dash No. | L Dia. ±.015 (0.4) | |
|----------|--------------------|-------|----------|--------------------|-------|
| | In | mm | | In | mm |
| 50 | 0.425 | 10.80 | 74 | 1.625 | 41.30 |
| 52 | 0.485 | 12.30 | 76 | 1.750 | 44.50 |
| 54 | 0.640 | 16.30 | 78 | 1.875 | 47.60 |
| 56 | 0.750 | 19.10 | 80 | 1.980 | 50.30 |
| 58 | 0.890 | 22.60 | 82 | 2.060 | 52.30 |
| 60 | 1.015 | 25.80 | 84 | 2.235 | 56.80 |
| 62 | 1.095 | 27.80 | 86 | 2.310 | 58.70 |
| 64 | 1.130 | 28.70 | 88 | 2.475 | 62.90 |
| 66 | 1.250 | 31.80 | 90 | 2.655 | 67.40 |
| 68 | 1.350 | 34.30 | 92 | 2.810 | 71.40 |
| 70 | 1.390 | 35.30 | 94 | 3.045 | 77.30 |
| 72 | 1.485 | 37.70 | | | |

Table II: Solid Ring Style B

| Dash No. | M Dia. ±.015 (0.4) | | Dash No. | M Dia. ±.015 (0.4) | |
|----------|--------------------|-------|----------|--------------------|-------|
| | In | mm | | In | mm |
| 08 | 0.468 | 11.90 | 24 | 1.484 | 37.70 |
| 10 | 0.593 | 15.10 | 25 | 1.577 | 40.10 |
| 12 | 0.718 | 18.20 | 27 | 1.640 | 41.70 |
| 13 | 0.765 | 19.40 | 28 | 1.687 | 42.80 |
| 14 | 0.844 | 21.40 | 29 | 1.765 | 44.80 |
| 15 | 0.890 | 22.60 | 30 | 1.890 | 48.00 |
| 16 | 0.968 | 24.60 | 31 | 1.953 | 49.60 |
| 17 | 1.015 | 25.80 | 32 | 1.968 | 50.00 |
| 18 | 1.093 | 27.80 | 33 | 2.077 | 52.80 |
| 19 | 1.140 | 29.00 | 35 | 2.140 | 54.40 |
| 20 | 1.203 | 30.60 | 36 | 2.187 | 55.50 |
| 21 | 1.265 | 32.10 | 40 | 2.406 | 61.10 |
| 22 | 1.343 | 34.10 | 44 | 2.656 | 67.50 |
| 23 | 1.453 | 36.90 | 48 | 3.031 | 77.00 |
| | | | 118 | 0.310 | 7.90 |

Table III: Solid Ring Style A

| Dash No. | M Dia. ±.015 (0.4) | | Dash No. | M Dia. ±.015 (0.4) | |
|----------|--------------------|------|----------|--------------------|------|
| | In | mm | | In | mm |
| 095 | 0.312 | 7.9 | 109 | 1.266 | 32.2 |
| 100 | 0.391 | 9.9 | 209 | 1.312 | 33.3 |
| 101 | 0.516 | 13.1 | 110 | 1.391 | 35.3 |
| 102 | 0.583 | 14.8 | 210 | 1.438 | 36.5 |
| 103 | 0.641 | 16.3 | 111 | 1.521 | 38.6 |
| 104 | 0.708 | 18.0 | 211 | 1.536 | 39.0 |
| 105 | 0.766 | 19.5 | 112 | 1.641 | 41.7 |
| 205 | 0.788 | 20.0 | 113 | 1.766 | 44.9 |
| 106 | 0.896 | 22.2 | 213 | 1.812 | 46.0 |
| 206 | 0.907 | 23.0 | 114 | 1.891 | 48.0 |
| 107 | 1.016 | 25.8 | 214 | 1.938 | 49.2 |
| 207 | 1.025 | 26.0 | 115 | 2.078 | 52.8 |
| 108 | 1.141 | 29.0 | 116 | 2.406 | 61.1 |
| 308 | 1.188 | 30.2 | 117 | 2.510 | 63.8 |
| 208 | 1.203 | 30.6 | | | |

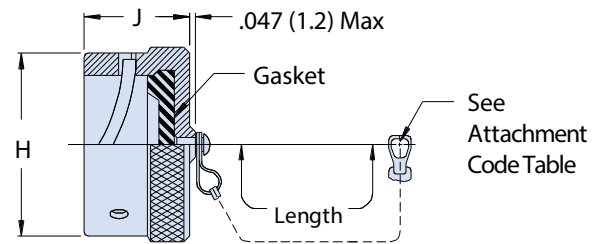
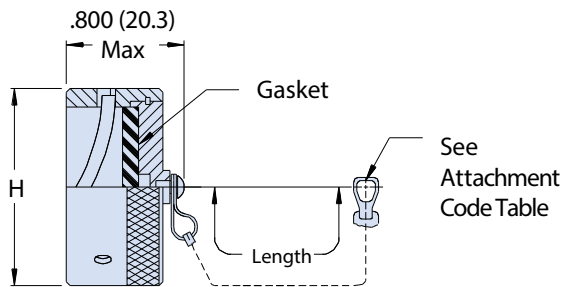
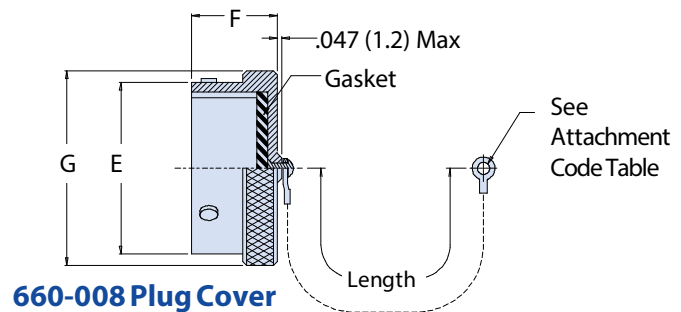


660-004 (plug) - 660-005 (receptacle) protective covers for MIL-DTL-26482 type connectors

MIL-DTL-26482

| How To Order | | | | | | |
|--------------------------------|---|----------|-----------|----------|----------|------------|
| Sample Part Number | 660-008 | M | 20 | S | 6 | -04 |
| Series/Basic Part No. | 660-008 = Plug 660-009 = Receptacle 661-001 = EMI Receptacle | | | | | |
| Finish | See Material and Finish Table | | | | | |
| Shell Size | 16 and 18; See Dimensions Table | | | | | |
| Attachment Type | See Attachment Code Table | | | | | |
| Attachment Length | Length given in inches, e.g. 6 = 6 inches | | | | | |
| Ring or Eyelet Dash No. | Ring or Eyelet Dash Number. See Tables 1 thru 4 for Specific Dash No. | | | | | |

| Attachment Code Table | |
|-----------------------|--|
| D | Bead Chain, Cres., Passivate |
| F | Wire Rope, Nylon Jacket |
| G | Nylon Rope |
| H | Wire Rope, Teflon Jacket |
| N | No Attachment |
| R | Wire Rope, PVC Jacket |
| S | #8 Sash Chain, Cres., Passivate |
| T | Wire Rope, No Jacket |
| U | Wire Rope, Polyurethane Jacket with Terminal |



661-001 EMI/RFI Receptacle Cover

660-009 Receptacle Cover

| Shell Size | Dimensions | | | | | | | | | |
|------------|------------|---------|-------|---------|-----------|---------|-----------|---------|-------|---------|
| | E Dia. | | F Max | | G Dia Max | | H Dia Max | | J Max | |
| 16 | 1.000 | (25.40) | 0.562 | (14.30) | 1.250 | (31.80) | 1.250 | (31.80) | 0.562 | (14.30) |
| 18 | 1.125 | (28.60) | 0.562 | (14.30) | 1.375 | (34.90) | 1.375 | (34.90) | 0.562 | (14.30) |

| Dash No. | Eyelet Diameter Dash Number | |
|----------|-----------------------------|--------|
| | K Diameter ±.010 (0.3) | |
| | In | mm |
| 01 | 0.140 | (3.60) |
| 02 | 0.182 | (4.60) |
| 03 | 0.191 | (4.90) |
| 04 | 0.197 | (5.00) |
| 05 | 0.167 | (4.20) |
| 06 | 0.125 | (3.20) |
| 07 | 0.218 | (5.50) |
| 09 | 0.156 | (4.00) |
| 00 | No Eyelet | |

| Material and Finish ¹ | |
|----------------------------------|--|
| NF | Cadmium, olive drab over electroless nickel (1000 hr.) |
| M | electroless nickel |
| ZN | Zinc-nickel alloy, olive drab |
| ZU | Cadmium plate, black |

NOTES

1. Additional finish options available, consult factory



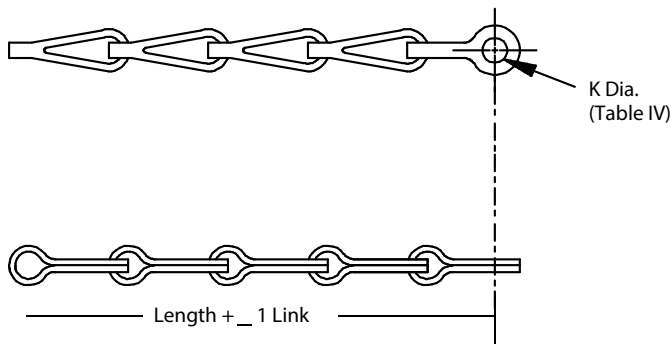
RJ45 ETHERNET AND USB 2.0 Tools and Accessories



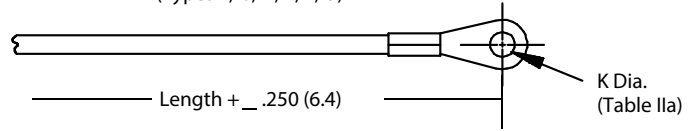
660-004 (plug) - 660-005 (receptacle) protective covers
for MIL-DTL-26482 type connectors

EYELET STYLE ATTACHMENTS

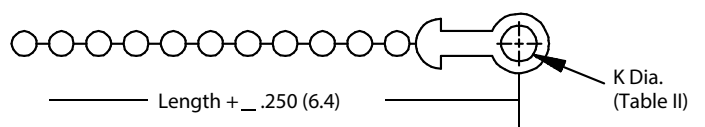
SASH CHAIN
(Type S)



ROPE
(Types F, G, H, R, T, U)

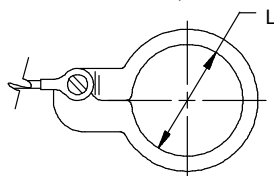


BEAD CHAIN
(Type D)

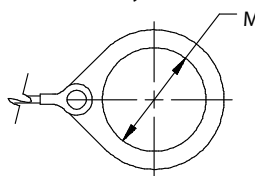


RING STYLE ATTACHMENTS

SPLIT RING - Style C



SOLID RING - Style B



SOLID RING - Style A

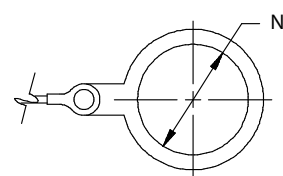


Table I: Split Ring Style C

| Dash No. | L Dia. ±.015 (0.4) | | Dash No. | L Dia. ±.015 (0.4) | |
|----------|--------------------|-------|----------|--------------------|-------|
| | In | mm | | In | mm |
| 50 | 0.425 | 10.80 | 74 | 1.625 | 41.30 |
| 52 | 0.485 | 12.30 | 76 | 1.750 | 44.50 |
| 54 | 0.640 | 16.30 | 78 | 1.875 | 47.60 |
| 56 | 0.750 | 19.10 | 80 | 1.980 | 50.30 |
| 58 | 0.890 | 22.60 | 82 | 2.060 | 52.30 |
| 60 | 1.015 | 25.80 | 84 | 2.235 | 56.80 |
| 62 | 1.095 | 27.80 | 86 | 2.310 | 58.70 |
| 64 | 1.130 | 28.70 | 88 | 2.475 | 62.90 |
| 66 | 1.250 | 31.80 | 90 | 2.655 | 67.40 |
| 68 | 1.350 | 34.30 | 92 | 2.810 | 71.40 |
| 70 | 1.390 | 35.30 | 94 | 3.045 | 77.30 |
| 72 | 1.485 | 37.70 | | | |

Table II: Solid Ring Style B

| Dash No. | M Dia. ±.015 (0.4) | | Dash No. | M Dia. ±.015 (0.4) | |
|----------|--------------------|-------|----------|--------------------|-------|
| | In | mm | | In | mm |
| 08 | 0.468 | 11.90 | 24 | 1.484 | 37.70 |
| 10 | 0.593 | 15.10 | 25 | 1.577 | 40.10 |
| 12 | 0.718 | 18.20 | 27 | 1.640 | 41.70 |
| 13 | 0.765 | 19.40 | 28 | 1.687 | 42.80 |
| 14 | 0.844 | 21.40 | 29 | 1.765 | 44.80 |
| 15 | 0.890 | 22.60 | 30 | 1.890 | 48.00 |
| 16 | 0.968 | 24.60 | 31 | 1.953 | 49.60 |
| 17 | 1.015 | 25.80 | 32 | 1.968 | 50.00 |
| 18 | 1.093 | 27.80 | 33 | 2.077 | 52.80 |
| 19 | 1.140 | 29.00 | 35 | 2.140 | 54.40 |
| 20 | 1.203 | 30.60 | 36 | 2.187 | 55.50 |
| 21 | 1.265 | 32.10 | 40 | 2.406 | 61.10 |
| 22 | 1.343 | 34.10 | 44 | 2.656 | 67.50 |
| 23 | 1.453 | 36.90 | 48 | 3.031 | 77.00 |
| | | | 118 | 0.310 | 7.90 |

Table III: Solid Ring Style A

| Dash No. | M Dia. ±.015 (0.4) | | Dash No. | M Dia. ±.015 (0.4) | |
|----------|--------------------|------|----------|--------------------|------|
| | In | mm | | In | mm |
| 095 | 0.312 | 7.9 | 109 | 1.266 | 32.2 |
| 100 | 0.391 | 9.9 | 209 | 1.312 | 33.3 |
| 101 | 0.516 | 13.1 | 110 | 1.391 | 35.3 |
| 102 | 0.583 | 14.8 | 210 | 1.438 | 36.5 |
| 103 | 0.641 | 16.3 | 111 | 1.521 | 38.6 |
| 104 | 0.708 | 18.0 | 211 | 1.536 | 39.0 |
| 105 | 0.766 | 19.5 | 112 | 1.641 | 41.7 |
| 205 | 0.788 | 20.0 | 113 | 1.766 | 44.9 |
| 106 | 0.896 | 22.2 | 213 | 1.812 | 46.0 |
| 206 | 0.907 | 23.0 | 114 | 1.891 | 48.0 |
| 107 | 1.016 | 25.8 | 214 | 1.938 | 49.2 |
| 207 | 1.025 | 26.0 | 115 | 2.078 | 52.8 |
| 108 | 1.141 | 29.0 | 116 | 2.406 | 61.1 |
| 308 | 1.188 | 30.2 | 117 | 2.510 | 63.8 |
| 208 | 1.203 | 30.6 | | | |

X-ON Electronics

Largest Supplier of Electrical and Electronic Components

Click to view similar products for [Circular MIL Spec Tools, Hardware & Accessories](#) *category:*

Click to view products by [Glenair](#) *manufacturer:*

Other Similar products are found below :

[0113-201-2025](#) [600-079-06](#) [600-146-06](#) [M10-101982-143](#) [M10-101982-163](#) [M10-101983-183](#) [M10-150912-083](#) [M10-454396-008](#)
[602GB18808](#) [CS3102A-22-14PW](#) [M2887615-CD](#) [627-009](#) [M38999/9-19B](#) [630A007NF083A](#) [630B007M051A](#) [630BJ003NF032H](#) [637-](#)
[149NF04B](#) [M39029/29-215](#) [6408-203V-09273](#) [6426-201-11343](#) [650FS002NF16](#) [660-008NF14S7-01](#) [660-009M22H8-03](#) [660-013NF19U6-](#)
[210](#) [660-015M10S6-17](#) [660-015NF10S5-01](#) [660-015NF14R3.5-01](#) [660-023NF19H6-19](#) [660-024NF11S12-01](#) [660-024NF11S3-01](#) [660-](#)
[024NF17S4-109](#) [660-050XM17F4-01](#) [660-068NF25R6-30G](#) [660-070M23S8-04](#) [660-073MTCH9-20](#) [M83723/61-18W](#) [M83723/61-218R](#)
[M83723/61-224W](#) [667-084-23C](#) [667-084-35C](#) [667-224NF16](#) [687-697NF-1](#) [M85049/94-10-A](#) [M85049/96-7-A](#) [M855282-10A01A](#)
[M85528/2-10B](#) [M855282-18A01A](#) [M85528/2-22A01A](#) [M85528/2-22AA](#) [710HS460NF2508](#)