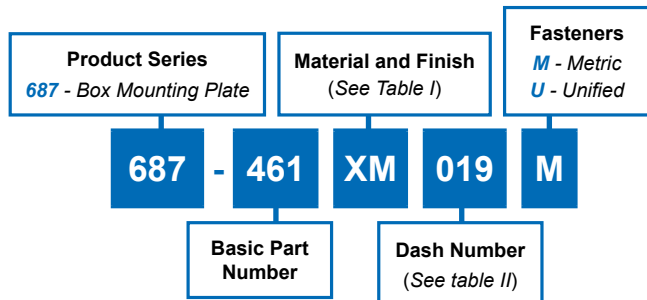


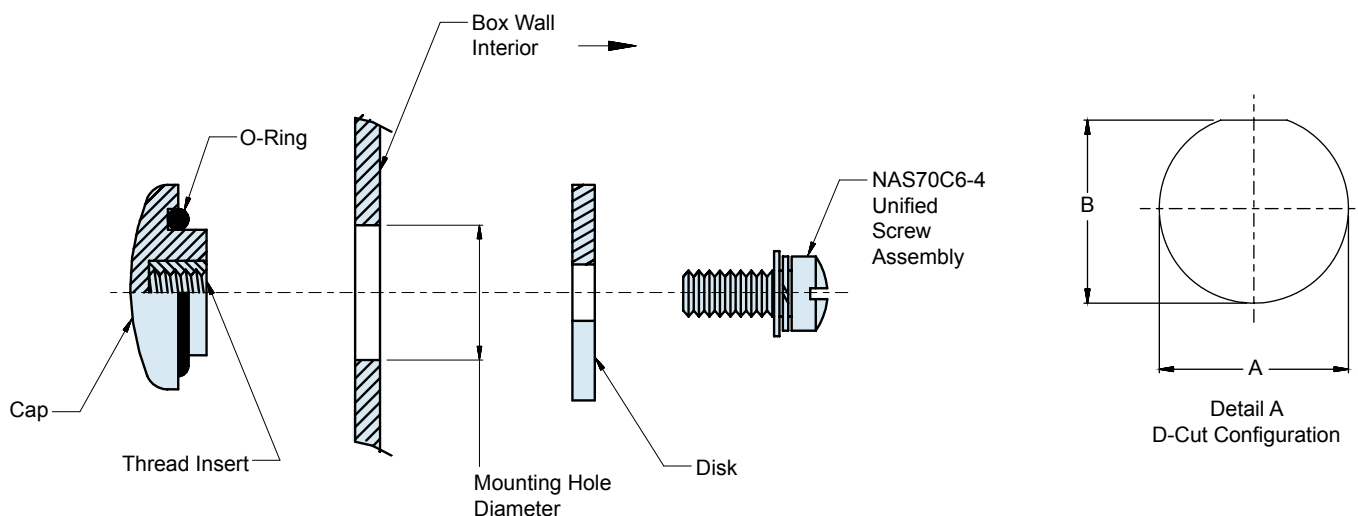
# 687-461 Hole Cap Assembly



Composite  
Junction  
Boxes



Dash Number	A Mounting Hole Dia.	D Dim.	Thread Size, Box Components, Ref.	
016	.646	N/A	M16	5/8
017	.725	N/A	M18	
018	.765	N/A		3/4
019	.802	N/A	M20	
020	.890	N/A		7/8
021	.945	N/A		15/16
022	1.015	N/A		1.0
023	1.077	N/A	M27	
027	1.328	N/A		15/16
028	1.203	N/A	M30	13/16
029	1.438	N/A	M36	
030	.640	.595	See Detail A	
031	1.000	.968	See Detail A	
032	.755	.691	See Detail A	



Symbol	Material	Finish Description
XO	PEI 30% Glass Filled Composite Thermoplastic	No Plating – Color Light Grey (Non-Conductive Finish)
XB		No Plating – Color Black (Non-Conductive Finish)
XM		Conductive – Electroless Nickel
XZN		Conductive – Zinc Nickel, Black

Dash No.	Mounting Hole Dia.
016	.646 (16.4)
017	.725 (18.4)
018	.765 (19.4)
019	.802 (20.4)
020	.890 (22.6)
022	1.015 (25.8)
023	1.077 (27.4)
027	1.328 (33.7)
029	1.438 (36.5)

Metric Dimensions (mm) are in parentheses and are for reference only

E

## X-ON Electronics

Largest Supplier of Electrical and Electronic Components

*Click to view similar products for [Standard Circular Connector](#) category:*

*Click to view products by [Glenair](#) manufacturer:*

Other Similar products are found below :

[5M2530B10P](#) [600259N006](#) [600273N007](#) [6134-336-13149](#) [6134-337-11149](#) [6134-337-2390](#) [6134-341-17149](#) [6280-4SG-516](#) [6280-7SG-3DC](#)  
[6290](#) [6291A](#) [66200A-10](#) [680-SMG](#) [681-PMG](#) [CXS3102A14S2P](#) [CXS3102A181S](#) [7251-6SG-300](#) [7271-6SG-300](#) [7282-3PG-300-CH3](#) [75-](#)  
[474014-05S](#) [75-474618-01S](#) [75-474618-04P](#) [75-474618-04S](#) [799539-000](#) [MI8-SE](#) [805-005-07NF11-19PC](#) [805-005-07NF15-7PA](#) [8280-4PG-](#)  
[516](#) [8280-7PG-519](#) [8282-5PG-519](#) [836783-1](#) [MP-4102-25P-C](#) [862256-1](#) [864019-2](#) [866857-1](#) [867865-1](#) [PT01SP-14-18P](#) [PT08P-14-5S](#)  
[PTSF06SE-14-12S](#) [120-1833-000](#) [QCM019PC2DC012B](#) [1-2069279-1](#) [121583-0217](#) [121667-0020](#) [129591AU](#) [1000B BULK](#) [RD10A16-19-](#)  
[P6CS051/1](#) [RD10A20-31-P8CS051/1](#) [RD16A14-12-S6CS051/2](#) [1301240290](#) [1301240347](#)