

FOR USE WITH STEEL AND STAINLESS STEEL

PART NUMBER	THREAD SIZE A	B	C	D	E	HOLE SIZE	PLATE THICKNESS	TORQUE VALUE	SETTING TOOL+THREADED INSERT	LONG STEPPED DRILL	SHORT STEPPED DRILL
81963-01	M6	11.5	4.5	6.4	Ø16	11.5/11.7	1.5-4mm	4Nm	PMT06 + VAV06CV045	OFE1150044	OFE1150018
81965-01	M8	15	5.5	8.7	Ø19.5	15.0/15.2	1.5-4mm	10Nm	PMT8 + VAV08CV050	OFE1500042	OFE1150018
81967-01	M10	19	5.5	9.2	Ø25	19.0/19.2	2-4mm	20Nm	PMT10 + VAV10CV050	OFE1900051	OFE1900022

FOR USE WITH ALUMINIUM

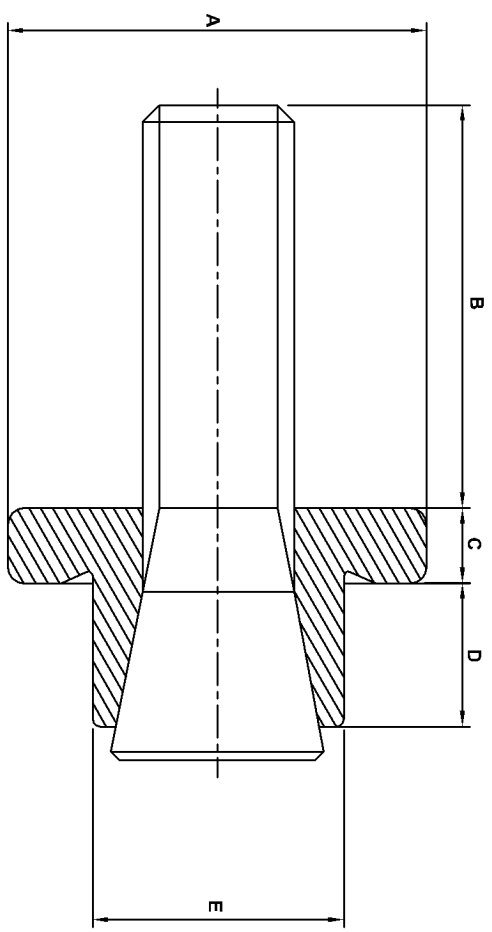
PART NUMBER	THREAD SIZE A	B	C	D	E	HOLE SIZE	PLATE THICKNESS	TORQUE VALUE	SETTING TOOL+THREADED INSERT	LONG STEPPED DRILL	SHORT STEPPED DRILL
81964-01	M6	11.5	4.5	6.4	Ø16	11.5/11.7	1.5-4mm	4Nm	PMT06 + VAV06CV045	OFE1150044	OFE1150018
81966-01	M8	15	5.5	8.7	Ø19.5	15.0/15.2	1.5-4mm	10Nm	PMT8 + VAV08CV050	OFE1500042	OFE1500018
81968-01	M10	19	5.5	9.2	Ø25	19.0/19.2	2-4mm	20Nm	PMT10 + VAV10CV050	OFE1900051	OFE1900022

MATERIAL	
FINISH	

TITLE	EARTH BOSSES FOR USE WITH STEEL/STAINLESS STEEL AND ALUMINIUM (METRIC)		
UNLESS STATED OTHERWISE THE POSITION OF ANY [ENIG] SIZE HOLES ARE SUBJECT TO THE FOLLOWING GEOMETRIC TOLERANCES	<input checked="" type="checkbox"/> $\pm 0.20$ <input type="checkbox"/> $\pm 0.08$	DIMENSIONS mm. SCALE 4 : 1	
ALL DIMENSIONS RELATIVE TO DATUM ARE SUBJECT TO THE FOLLOWING GEOMETRIC TOLERANCES	<input type="checkbox"/> $\pm 0.20$ <input type="checkbox"/> $\pm 0.08$	DRAWN BY A.Jackson DESIGN APPR M.A.P. DATE 07/09/06 DATE 31/01/08	
PROJECTION	<input checked="" type="checkbox"/> 1st Angle <input type="checkbox"/> 3rd Angle	DRIVING No. MRP1572	
DIS	5089	SHT	1
REV	B	8768	31/01/08
REV	DOC No.	DATE	
REV		DATE	

GLENAIR UK LTD  
 OAKHAM BUSINESS PARK  
 MANSFIELD ROAD  
 LONDON

THIS DOCUMENT CONTAINS INFORMATION OR DEPENDS ON IT. IT IS THE PROPERTY OF GLENAIR UK LTD. BY REVISION, THE HOLDER AGREES THAT IT SHALL NOT BE USED IN ANY MANNER NOTIFIED HEREIN.



**NOTE**  
DIMENSION SHOWN IN PARENTHESIS IS APPROXIMATE LENGTH OF STUD MEASURED FROM FLANGE FACE.

**FOR USE WITH STEEL AND STAINLESS STEEL PLATE**

PART NUMBER	THREAD SIZE	A	B	C	D	E	HOLE SIZE	PLATE THICKNESS	TORQUE VALUE	SETTING TOOL	LONG STEPPED DRILL	SHORT STEPPED DRILL
80923-01	M6	16Ø	21(26)	4.5	4.5	11.5Ø	11.5/11.7	1.5-4mm	8Nm	PMT6/PMT6	OF E1150044	OF E1150018
80974-01	M6	16Ø	13(18)	4.5	4.5	11.5Ø	11.5/11.7	1.5-4mm	8Nm	PMT6	OF E1150044	OF E1150018
80925-01	M6	16Ø	24(27)	3.5	11	8.5Ø	8.5/8.7	>4mm	8Nm	PMT6/PMT6	OF E0850032	OF E0850016
80975-01	M6	16Ø	16(19)	3.5	11	8.5Ø	8.5/8.7	>4mm	8Nm	PMT6	OF E0850032	OF E0850016
81929-01	M8	20Ø	15(20)	4.5	4.5	15.0Ø	15.0/15.2	1.5-4mm	15Nm	PMT8	OF E1500042	OF E1500018
81928-01	M8	20Ø	19(21)	3.5	11	11.5Ø	11.5/11.7	>4mm	15Nm	PMT8	OF E1150044	OF E1150018
80924-01	M10	25Ø	24(31)	5.5	4.5	19.0Ø	19.0/19.2	2-4mm	34Nm	PMT10	OF E1900051	OF E1900022
80926-01	M10	25Ø	28(31)	3.5	11	13.5Ø	13.5/13.7	>4mm	34Nm	PMT10	OF E1350037	OF E1350019

**FOR USE WITH ALUMINIUM PLATE**

PART NUMBER	THREAD SIZE	A	B	C	D	E	HOLE SIZE	PLATE THICKNESS	TORQUE VALUE	SETTING TOOL	LONG STEPPED DRILL	SHORT STEPPED DRILL
80958-01	M6	16Ø	21(26)	4.5	4.5	11.5Ø	11.5/11.7	1.5-4mm	8Nm	PMT6/PMT6	OF E1150044	OF E1150018
80976-01	M6	16Ø	13(18)	4.5	4.5	11.5Ø	11.5/11.7	1.5-4mm	8Nm	PMT6	OF E1150044	OF E1150018
80960-01	M6	16Ø	24(27)	3.5	11	10.5Ø	10.5/10.7	>4mm	8Nm	PMT6/PMT6	OF E1050041	OF E1050020
80977-01	M6	16Ø	16(19)	3.5	11	10.5Ø	10.5/10.7	>4mm	8Nm	PMT6	OF E1050041	OF E1050020
81931-01	M8	20Ø	15(20)	5.5	4.5	15.0Ø	15.0/15.2	1.5-4mm	15Nm	PMT8	OF E1500042	OF E1500018
81930-01	M8	20Ø	19(21)	3.5	11	13.5Ø	13.5/13.7	>4mm	15Nm	PMT8	OF E1350037	OF E1350019
80959-01	M10	25Ø	24(31)	5.5	4.5	19.0Ø	19.0/19.2	2-4mm	34Nm	PMT10	OF E1900051	OF E1900022
80961-01	M10	25Ø	28(31)	3.5	11	15.0Ø	15.0/15.2	>4mm	34Nm	PMT10	OF E1500042	OF E1500018

MATERIAL	
FINISH	

**TITLE**  
EARTH BOND STUDS FOR USE WITH STEEL/STAINLESS STEEL AND ALUMINIUM (METRIC)

UNLESS STATED OTHERWISE THE POSITION OF ANY [ESG] SIZE HOLES ARE SUBJECT TO THE FOLLOWING GEOMETRIC TOLERANCES

TOLEANCES  
xx ± 0.13  
x ± 0.25  
HOLES ± 0.08  
ANGLES ± 0.5°

DIMENSIONS  
mm.  
SCALE  
NTS

DRAWN BY  
A.Jackson  
DATE  
07/09/06

PROJECTION  
A3  
DIS 5089  
REV B  
DATE 31/01/08



GLENNAIR UK LTD  
OAKHAM BUSINESS PARK  
MANSFIELD ROAD  
MANSFIELD  
NOTTINGHAMSHIRE  
NG20 0JG  
ENGLAND

THIS DOCUMENT CONTAINS INFORMATION DEVELOPED AT ITS OWN PRIVATE EXPENSE AND MAY NOT BE USED, DUPLICATED OR REPRODUCED IN WHOLE OR IN PART FOR DESIGN, MANUFACTURE OR PROCUREMENT WITHOUT THE WRITTEN PERMISSION OF GLENNAIR UK LTD. BY REFERENCE TO THIS DOCUMENT THE HOLDER AGREES THAT IT SHALL NOT BE USED IN ANY MANNER NOT INTENDED HEREIN.

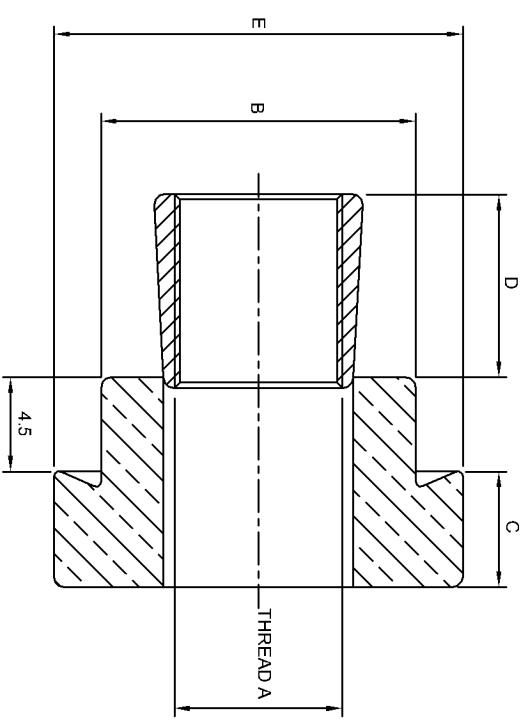
ALL DIMENSIONS RELATIVE TO DATUM ARE SUBJECT TO THE FOLLOWING GEOMETRIC TOLERANCES

DRAWING No.  
MRP1572

DATE  
31/01/08

DESIGN APPR.  
M.A.P.

SHIT 2 OF 4  
REV B



FOR USE WITH STEEL AND STAINLESS STEEL

PART NUMBER	THREAD SIZE A	B	C	D	E	HOLE SIZE	PLATE THICKNESS	TORQUE VALUE	SETTING TOOL	STEPPED DRILL
81985-01	1/4"UNC	7/16"	0.177"	0.252"	Ø0.630"	0.437"Ø0.445"	0.059"-0.157"	70in-lbf	PMT C1/4UNC	OFE07/16043
81991-01	3/8"UNC	3/4"	0.216"	0.362"	Ø0.984"	0.750"Ø0.758"	0.078"-0.157"	300in-lbf	PMT 3/8UNC	OFE03/04051

FOR USE WITH ALUMINIUM

PART NUMBER	THREAD SIZE A	B	C	D	E	HOLE SIZE	PLATE THICKNESS	TORQUE VALUE	SETTING TOOL	STEPPED DRILL
81986-01	1/4"UNC	7/16"	0.177"	0.252"	Ø0.630"	0.437"Ø0.445"	0.059"-0.157"	70in-lbf	PMT C1/4UNC	OFE07/16043
81992-01	3/8"UNC	3/4"	0.216"	0.362"	Ø0.984"	0.750"Ø0.758"	0.078"-0.157"	300in-lbf	PMT 3/8UNC	OFE03/04051

MATERIAL	
FINISH	



GLENNAIR UK LTD  
OAKHAM BUSINESS PARK  
MAKESHAM ROAD  
LINDSEY KINGDOM

**TITLE**  
EARTH BOSSES FOR USE WITH  
STEEL/STAINLESS STEEL  
AND ALUMINIUM (IMPERIAL)

UNLESS STATED OTHERWISE  
THE POSITION OF ANY [ESIG] SIZE HOLES  
ARE SUBJECT TO THE FOLLOWING  
GEOMETRIC TOLERANCES

ALL DIMENSIONS RELATIVE TO DATUM  
ARE SUBJECT TO THE FOLLOWING  
GEOMETRIC TOLERANCES

TOLERANCES  
XX ± 0.13  
X ± 0.25  
HOLES ± 0.08  
ANGLES ± 0.5°

DIMENSIONS  
mm.  
SCALE  
4 : 1

DRAWN BY  
M.A.P.  
DATE  
31/01/08

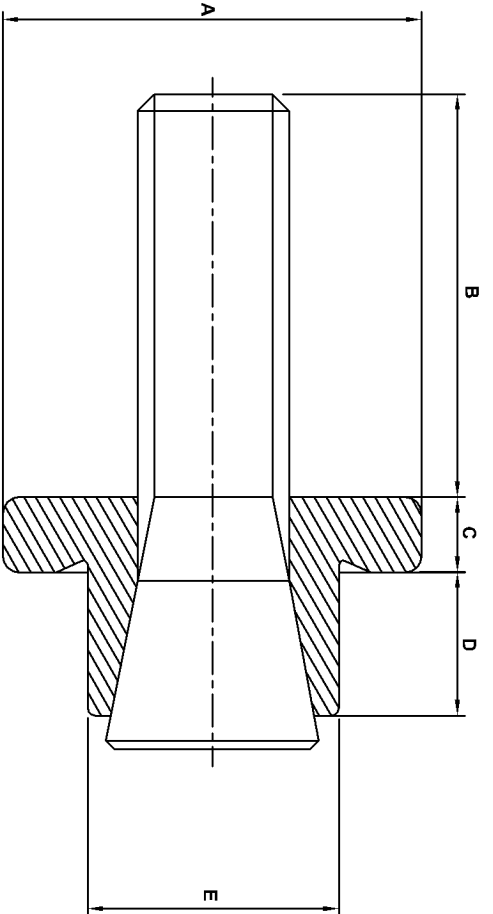
PROJECTION  
DRAWING No.  
A3

DIS	5089	SHT	3
REV	B	DOC No.	8768
		DATE	31/01/08
		OF	4

MPRP1572

REV  
B

THIS DOCUMENT CONTAINS INFORMATION  
DEVELOPED AT ITS OWN PRIVATE EXPENSE  
AND MAY NOT BE USED, REPRODUCED OR  
DISCLOSED IN WHOLE OR IN PART FOR  
DESIGN, MANUFACTURE OR PROCUREMENT  
PURPOSES WITHOUT THE WRITTEN  
CONSENT OF GLENNAIR UK LTD. BY REFERENCE  
THE HOLDER AGREES THAT IT SHALL NOT BE  
USED IN ANY MANNER NOTIFIED HEREIN.



**NOTE**  
DIMENSION SHOWN IN PARENTHESIS  
IS APPROXIMATE LENGTH OF STUD  
MEASURED FROM FLANGE FACE.

**FOR USE WITH STEEL AND STAINLESS STEEL PLATE**

PART NUMBER	THREAD SIZE	A	B	C	D	E	HOLE SIZE	PLATE THICKNESS	TORQUE VALUE	SETTING TOOL	STEPPED DRILL
81983-01	1/4"UNC	Ø0.630"	0.510"(0.700")	0.177"	0.177"	7/16"	0.437"Ø.445"	0.059"-0.157"	70in-lbf	PMT/C1/4UNC	OF/E07/16043
81987-01	1/4"UNC	Ø0.630"	0.630"(0.748")	0.138"	0.433"	3/8"	0.375"Ø.383"	>0.157"	70in-lbf	PMT/C1/4UNC	OF/E03/08037
81989-01	3/8"UNC	Ø0.984"	0.944"(1.220")	0.216"	0.177"	3/4"	0.750"Ø.758"	0.078"-0.157"	300in-lbf	PMT/3/8UNC	OF/E03/04051
81993-01	3/8"UNC	Ø0.984"	1.102"(1.220")	0.138"	0.433"	1 7/32"	0.531"Ø.539"	>0.157"	300in-lbf	PMT/3/8UNC	OF/E17/32037

**FOR USE WITH ALUMINIUM PLATE**

PART NUMBER	THREAD SIZE	A	B	C	D	E	HOLE SIZE	PLATE THICKNESS	TORQUE VALUE	SETTING TOOL	STEPPED DRILL
81984-01	1/4"UNC	Ø0.630"	0.510"(0.700")	0.177"	0.177"	7/16"	0.437"Ø.445"	0.059"-0.157"	70in-lbf	PMT/C1/4UNC	OF/E07/16043
81988-01	1/4"UNC	Ø0.630"	0.630"(0.748")	0.138"	0.433"	7/16"	0.437"Ø.445"	>0.157"	70in-lbf	PMT/C1/4UNC	OF/E07/16043
81990-01	3/8"UNC	Ø0.984"	0.944"(1.220")	0.216"	0.177"	3/4"	0.750"Ø.758"	0.078"-0.157"	300in-lbf	PMT/3/8UNC	OF/E03/04051
81994-01	3/8"UNC	Ø0.984"	1.102"(1.220")	0.138"	0.433"	1 9/32"	0.594"Ø.602"	>0.157"	300in-lbf	PMT/3/8UNC	OF/E19/32042

MATERIAL	
FINISH	

**Glennar**  
GLENNAR UK LTD  
OAKHAM BUSINESS PARK  
MANSFIELD ROAD  
LONDON

THIS DOCUMENT CONTAINS INFORMATION OR DEVELOPED AT ITS OWN PRIVATE EXPENSE AND MAY NOT BE USED, REPRODUCED OR DISCLOSED IN WHOLE OR IN PART FOR DESIGN, MANUFACTURE OR PROCUREMENT OF ANY PARTS OR COMPONENTS WITHOUT THE WRITTEN CONSENT OF GLENNAR UK LTD. BY REFERENCE, THE HOLDER AGREES THAT IT SHALL NOT BE USED IN ANY MANNER NOT INTENDED HEREIN.

**TITLE**  
EARTH BOND STUDS FOR USE WITH STEEL/STAINLESS STEEL AND ALUMINIUM (IMPERIAL)

UNLESS STATED OTHERWISE THE POSITION OF ANY [ESG] SIZE HOLES ARE SUBJECT TO THE FOLLOWING GEOMETRIC TOLERANCES

ALL DIMENSIONS RELATIVE TO DATUM ARE SUBJECT TO THE FOLLOWING GEOMETRIC TOLERANCES

H0.020  
 H0.025

TOLERANCES  
XX ± 0.13  
X ± 0.25  
HOLES ± 0.08  
ANGLES ± 0.5°

DIMENSIONS mm. SCALE NTS  
DRAWN BY M.A.P.  
DATE 31/01/08  
DESIGN APPR' M.A.P.

PROJECTION A3  
DRAWING No. MRP1572  
DIS 5089  
REV BCO No. DATE 31/01/08  
SHT 4 OF 4  
REV B

## X-ON Electronics

Largest Supplier of Electrical and Electronic Components

*Click to view similar products for [Other Tools](#) category:*

*Click to view products by [Glenair](#) manufacturer:*

Other Similar products are found below :

[899-2-KT46](#) [568681-1](#) [CR-12FP4--260R](#) [5800-0090](#) [58061-1](#) [59085](#) [00-8273-RDPP](#) [593033](#) [593072](#) [593564100](#) [593575](#) [593593](#) [011349-000](#) [CRCW08052740FRT1](#) [LUC-012S070DSM](#) [LUC-018S070DSP](#) [LUC-024S105DSP](#) [599-2021-3-NME](#) [599-JJ-2021-03](#) [CRCW2010331JR02](#) [601-JJ-06](#) [601-SPB](#) [601YSY](#) [602-JJ-03](#) [602SPB](#) [603-JJ-07-FP](#) [603-JJY-04](#) [CRTN1013](#) [CS16](#) [6-1579014-0](#) [6203](#) [6240-1](#) [M43435 TY 2 SZ 3 FIN B BLK](#) [M43435 TY 5 SZ 3 FIN C NAT](#) [M-5Z](#) [M6816](#) [660-29ABT1](#) [662508-1](#) [CVHD-950X-93.333](#) [CW104-01X](#) [671-GP-04-KT39-73207](#) [CW307-01A](#) [CW30901A](#) [CW6211201A](#) [679793-1](#) [690124-7](#) [690191-1](#) [690191-3](#) [690317-2](#) [691409-](#)