

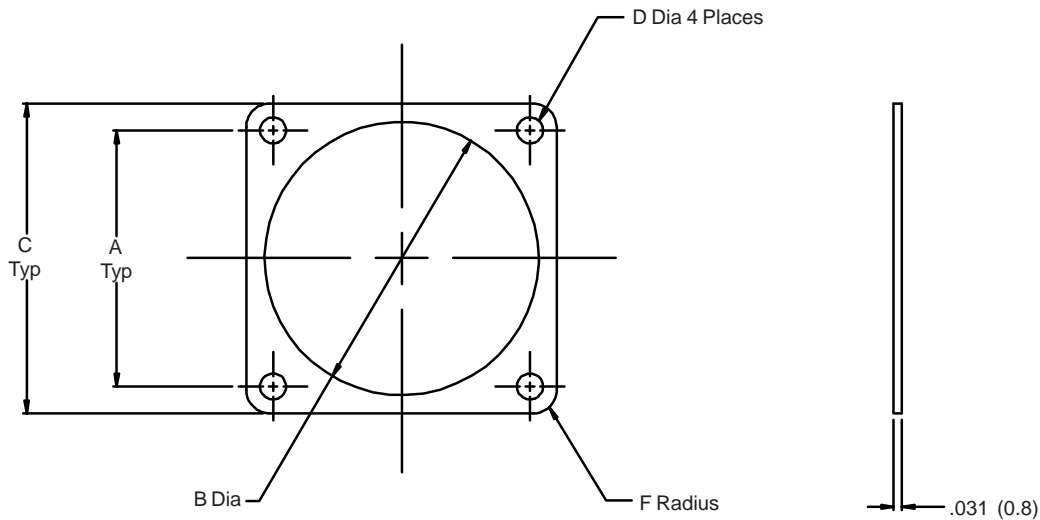
930 - 004 F 10

Product Series _____

Basic Number _____

Dash Number (Table I) _____

Material Symbol (Table II) _____



NOTES:

1. Identified by bag and tag in suitable quantities.
2. Metric dimensions (mm) are indicated in parentheses.

930-004
Gasket for MIL-DTL-5015 and MIL-C-22992
Class C - J and R Receptacle Connectors



TABLE I: DASH NUMBER

Dash No.	MIL-C-22992											
	MIL-DTL-5015	Class C J & R	A		B Dia		C		D Dia		F Rad	
			±.010	(0.3)	+0.016 -0	(+0.4 -0)	+0.016 -0	(+0.4 -0)	±.010	(0.1)	±.010	(0.3)
1	8S	-	.594	(15.1)	.500	(12.7)	.875	(22.2)	.172	(4.4)	.141	(3.6)
2	10S & 10SL	-	.719	(18.3)	.625	(15.9)	1.000	(24.4)	.172	(4.4)	.141	(3.6)
3	12 & 12S	-	.812	(20.6)	.750	(19.1)	1.094	(27.8)	.172	(4.4)	.141	(3.6)
4	14 & 14S	12	.906	(23.0)	.875	(22.2)	1.188	(30.2)	.172	(4.4)	.141	(3.6)
5	16 & 16S	14	.969	(24.6)	1.000	(25.4)	1.281	(32.5)	.172	(4.4)	.156	(4.0)
6	18	16	1.062	(27.0)	1.125	(28.6)	1.375	(34.9)	.203	(5.2)	.156	(4.0)
7	20	18	1.156	(29.4)	1.250	(31.8)	1.500	(38.1)	.203	(5.2)	.172	(4.4)
8	22	20	1.250	(31.8)	1.375	(34.9)	1.625	(41.3)	.203	(5.2)	.188	(4.8)
9	24	22	1.375	(34.9)	1.500	(38.1)	1.750	(44.5)	.203	(5.2)	.188	(4.8)
10	28	24	1.562	(39.7)	1.750	(44.5)	2.000	(50.8)	.203	(5.2)	.219	(5.6)
11	28	-	2.188	(55.6)	1.750	(44.5)	2.688	(68.3)	.203	(5.2)	.250	(6.4)
12	32	28	1.750	(44.5)	2.000	(50.8)	2.250	(57.6)	.219	(5.6)	.250	(6.4)
13	36	32	1.938	(49.2)	2.188	(55.6)	2.500	(63.5)	.219	(5.6)	.281	(7.1)
14	40	36	1.188	(30.2)	2.438	(61.9)	2.750	(69.9)	.219	(5.6)	.281	(7.1)
15	18*	-	1.062	(27.0)	1.220	(31.0)	1.375	(34.9)	.203	(5.2)	.156	(4.0)

*Fits Amphenol GT Series

TABLE II: MATERIAL

Symbol	Material Description
C	Conductive — Metex
F	Fluorosilicone
M	Conductive — Con-Sil II
N	Neoprene
S	Silicone

Metric Dimensions (mm) are indicated in parenthesis.

X-ON Electronics

Largest Supplier of Electrical and Electronic Components

Click to view similar products for [Circular MIL Spec Tools, Hardware & Accessories](#) *category:*

Click to view products by [Glenair](#) *manufacturer:*

Other Similar products are found below :

[0113-201-2025](#) [600-079-06](#) [600-146-06](#) [M10-101983-183](#) [M10-454396-008](#) [602GB18808](#) [CS3102A-22-14PW](#) [M2887615-CD](#) [627-009](#)
[M38999/9-19B](#) [630A007NF083A](#) [630B007M051A](#) [630BJ003NF032H](#) [637-149NF04B](#) [M39029/29-215](#) [6408-203V-09273](#) [6426-201-11343](#)
[650FS002NF16](#) [660-008NF14S7-01](#) [660-009M22H8-03](#) [660-013NF19U6-210](#) [660-015M10S6-17](#) [660-015NF10S5-01](#) [660-015NF14R3.5-01](#)
[660-023NF19H6-19](#) [660-024NF11S12-01](#) [660-024NF11S3-01](#) [660-024NF17S4-109](#) [660-050XM17F4-01](#) [660-068NF25R6-30G](#) [660-](#)
[070M23S8-04](#) [660-073MTCH9-20](#) [M83723/61-18W](#) [M83723/61-218R](#) [M83723/61-224W](#) [667-084-23C](#) [667-084-35C](#) [667-224NF16](#) [687-](#)
[697NF-1](#) [M85049/94-10-A](#) [M85049/96-7-A](#) [M855282-10A01A](#) [M85528/2-10B](#) [M855282-18A01A](#) [M85528/2-22A01A](#) [M85528/2-22AA](#)
[710HS460NF2508](#) [780-001-22G12-SK](#) [780-002-19G12-SK](#) [780-002-20G12SK](#)