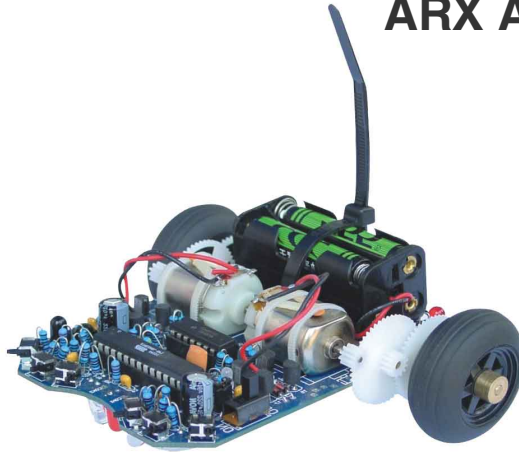


# ARX

## ARX ASURO Robot



### ARX Capabilities:

Cruise around wirelessly with PC control via USB transceiver

Follow a black or white line

Detect collisions

Measure and control rotational speed of motors via encoders

Move given distance

Rotate specific angles

Measure driven distance

Move in geometric paths: circles, polygons, and others

Read and transfer data wirelessly to and from PC via USB transceiver

Expandable via expansion pins

### With optional

### Wireless:

Read and transfer data to and from a PC or Android phone via optional Bluetooth

Cruise around via Android phone control

### Features:

- ATmega8L AVR processor
- Fully programmable in C language
- Comes unassembled. Soldering required
- CD with software, training manual, and supporting materials
- Excellent AVR-GCC freeware for use with Windows or Linux
- Unique and safe USB IR transceiver with simple to operate flash software
- Remote control and PC-programming possible via USB transceiver
- Wireless options available
- Extensions kits available
- 6 collision-detector sensors
- Optical line-tracker unit
- 2 independently controlled 3 VDC motors
- On-board odometer sensor on both wheels
- Preprogrammed firmware for easy hardware testing
- 3 LED indicators

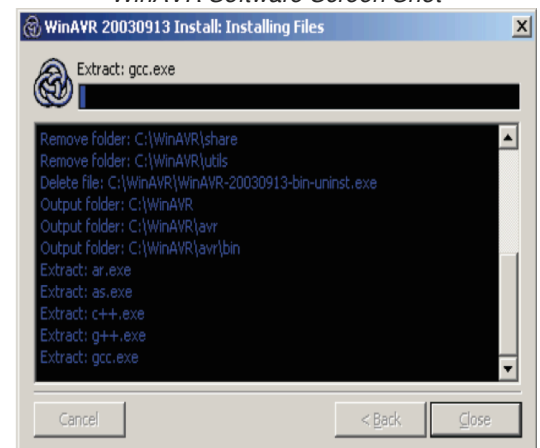
### Overview:

The ARX is a small autonomous multi-sensored robot developed for educational purposes by the DLR, the German Aerospace Center (like NASA).

Highly versatile, the ARX is completely programmable in C. Assembly is easy for experienced electronic technicians and feasible for a novice.

Except for the printed circuit boards (PCB), only standard parts are utilized and freeware tools can be used for programming. The ARX comes unassembled and includes a soldering guide making it exceptionally suitable as an introduction into processor-controlled hobby electronics for projects in schools, universities, and technical education. Special tools, which are freeware for private users, have been used for all electronic development phases and software design, proving that robots can be designed without expensive tools or machines.

WinAVR Software Screen Shot



# ARX

## Specifications

<i>ARX ASURO Robot</i>	
<b>Processor memory</b>	8 kB in-system programmable flash
<b>Supply voltage</b>	4 x AAA batteries (Not Included)
<b>Supply current</b>	Min 10 mA Max 600 mA
<b>Dimension (L x W x H)</b>	117 x 122 x 45 mm
<b>Weight</b>	165 g
<b>Technical data subject to change without notice</b>	

## Training & Support Manual on CD

- Chapter 1:** Mechanics
  - Necessary tools
  - Mechanical preparations
- Chapter 2:** Electronics
  - Soldering instructions
- Chapter 4:** Electronic Assembly
- Chapter 5:** Preparation for Operation
- Chapter 6:** Trouble Shooting
- Chapter 7:** Final Adjustments
- Chapter 8:** Software
- Chapter 9:** C for ASURO

### Appendix:

- Part List
- Diagram ARX
- USB IR Transceiver
- Block Diagram ASURO
- Block Diagram PIC Processor
- Contents ARX Kit
- Electronic part assembly
- Information about glue
- Resistor code tool

### ARX comes with the following items:

- ARX Vehicle (unassembled)
- CD
- USB Cable
- USB IR Transceiver

### Available Accessories

- ARX-MSP
- ARX-WRL
- ARX-BT3
- ARX-SNK
- ARX-ULT
- ARX-DSP
- ARX-EXP
- ARX-BOOK



[globalspecialties.com](http://globalspecialties.com)

## X-ON Electronics

Largest Supplier of Electrical and Electronic Components

*Click to view similar products for [Development Boards & Kits - AVR category](#):*

*Click to view products by [Global Specialties manufacturer](#):*

Other Similar products are found below :

[3264](#) [ATAVRPARROT](#) [ATSAMR21B18MZ210PAT](#) [CS-EASE-03](#) [EV35F40A](#) [A100053](#) [1222](#) [MIKROE-2474](#) [1260](#) [KIT0018](#) [1405](#) [DEV-10914](#) [1500](#) [1639](#) [1657](#) [174](#) [193](#) [2000](#) [2010](#) [3208](#) [ATRCB256RFR2](#) [ATXMEGAA1U-XPRO](#) [2085](#) [ATSTK600-SC48](#) [2290](#) [2466](#) [2488](#) [DEV-11520](#) [2590](#) [296](#) [3000](#) [ATAVRBLE-IOT](#) [ATTINY416-XNANO](#) [DFR0010](#) [DFR0100](#) [DFR0164](#) [DFR0191](#) [DFR0221](#) [DFR0222](#) [DFR0225](#) [DFR0233](#) [DFR0282](#) [DFR0327](#) [DRI0027](#) [KIT0111](#) [K030007](#) [DFR0351](#) [DEV-13614](#) [KIT-14265](#) [3379](#)