

Programmable Precision Reference

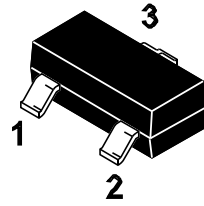
Features

- Low dynamic output impedance.
- Sink current capability of 0.5 to 100mA.
- Low output noise voltage
- Fast turn on response

Application

- It provides very wide applications, including shunt regulator, series regulator, switching regulator, voltage reference and others.

SOT-23

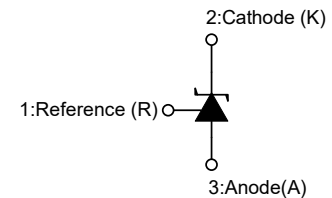


1. Reference 2.Cathode 3.Anode

Marking Code:

GN431A 0.5%: GN431A

GN431G 0.4%: GN431G



Absolute Maximum Ratings (Ta=25°C unless otherwise specified)

Parameter	Symbol	Value	Units
Cathode Voltage	V_{KA}	37	V
Cathode Current Range(Continuous)	I_{KA}	-100 ~ +150	mA
Reference Input Current Range	I_{REF}	-0.05 ~ +10	mA
Maximum Power Dissipation	P_D	350	mW
Operating Junction Temperature	T_J	150	°C
Storage Temperature Range	T_{STG}	-65 ~ +150	°C

Recommended Operating Conditions

Parameter	Symbol	Min.	Max.	Units
Cathode Voltage	V_{KA}	V_{REF}	36	V
Cathode Current	I_{KA}	1	100	mA
Operating Ambient Temperature Range	T_{OPR}	-40	85	°C

Electrical Characteristics (Ta=25°C unless otherwise specified)

Parameter	Symbol	Test Conditions	Min.	Typ.	Max.	Unit	
Reference Input Voltage Fig1	V _{REF}	V _{KA} =V _{REF} , I _{KA} =10mA	GN431A 0.5%	2.483	2.495	2.507	V
			GN431G 0.4%	2.485	2.495	2.505	V
Deviation of Reference Input Voltage Over Temperature Fig1	ΔV _{REF}	V _{KA} =V _{REF} , I _{KA} =10mA -40°C ≤ T _A ≤ +85°C	--	4.5	17	mV	
Ratio of Change in Reference Input Voltage to The Change in Cathode Voltage Fig2	$\frac{\Delta V_{REF}}{\Delta V_{KA}}$	I _{KA} =10mA	ΔV _{KA} =10V~V _{REF}	--	-1.0	-2.7	mV/V
			ΔV _{KA} =36V~10V	--	-0.5	-2.0	
Reference Input Current Fig2	I _{REF}	I _{KA} =10mA, R1=10KΩ, R2=∞	--	1.5	4	μA	
Deviation of Reference Input Current Over Full Temperature Range Fig2	ΔI _{REF}	I _{KA} =10mA, R1=10KΩ, R2=∞, -20°C ≤ T _A ≤ +85°C	--	0.4	1.2	μA	
Minimum Cathode Current for Regulation Fig1	I _{KA(MIN)}	V _{KA} =V _{REF}	--	0.45	1	mA	
Off-State Cathode Current Fig3	I _{KA(OFF)}	V _{KA} =36V, V _{REF} =0	--	0.05	1.0	μA	
Dynamic Impedance	Z _{KA}	V _{KA} =V _{REF} , I _{KA} =1~100mA, f ≤ 1.0KHz	--	0.15	0.5	Ω	

Figure 1. Test Circuit for V_{KA} = V_{REF}

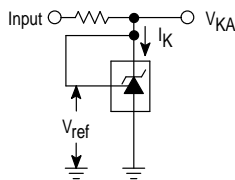


Figure 2. Test Circuit for V_{KA} > V_{REF}

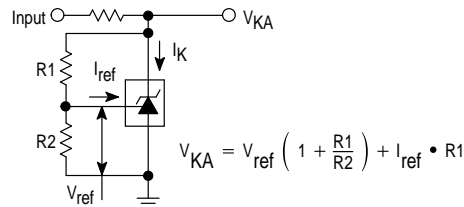
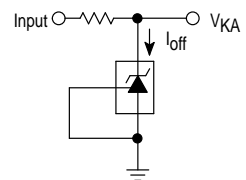
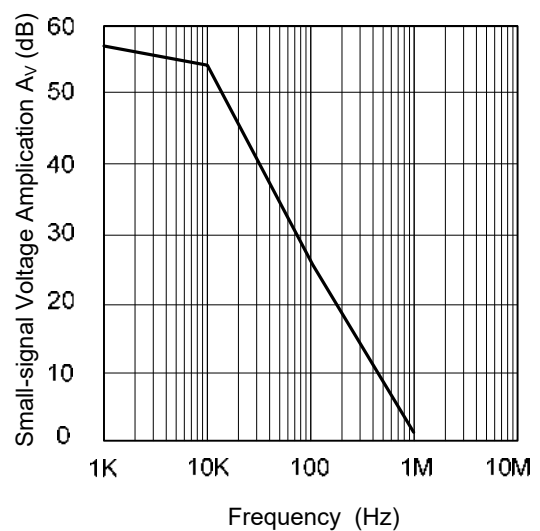
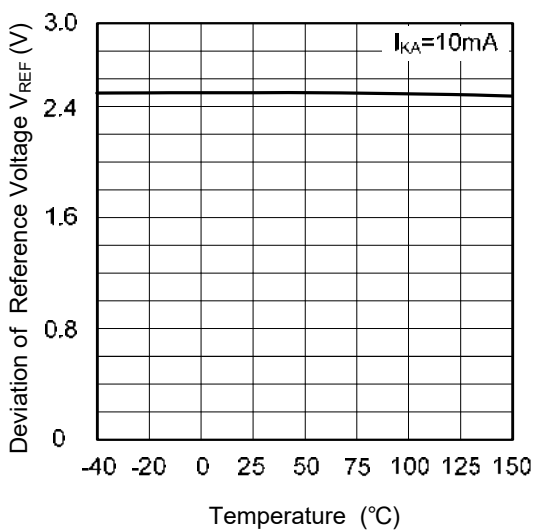
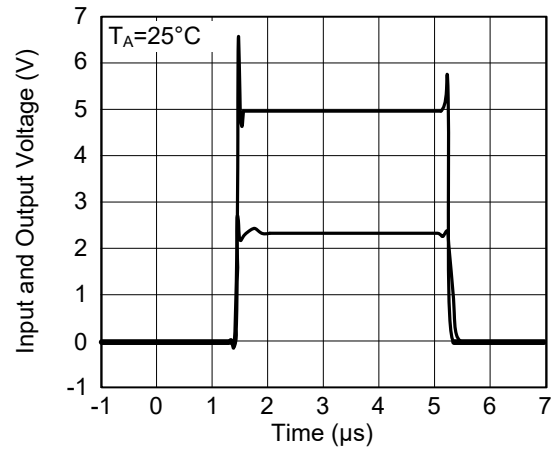
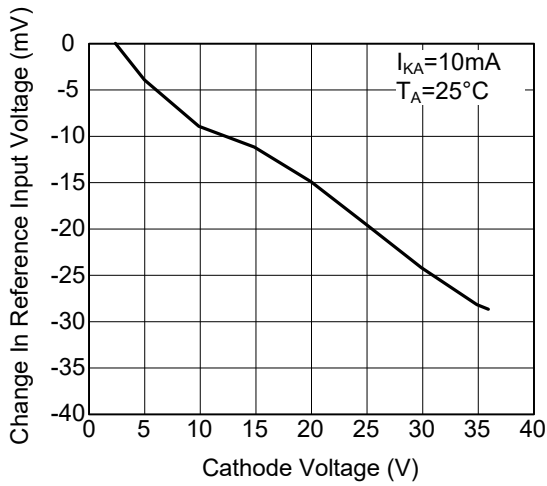
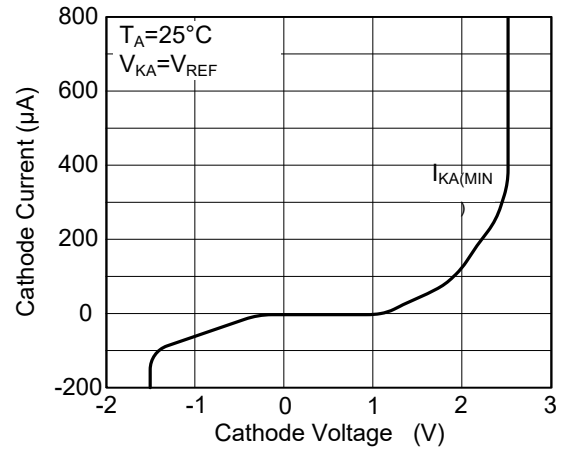
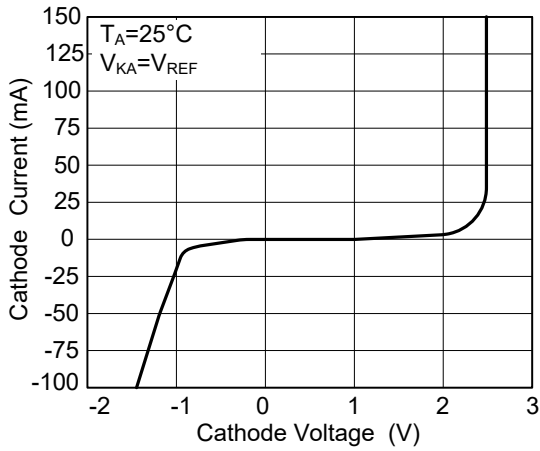


Figure 3. Test Circuit for I_{OFF}



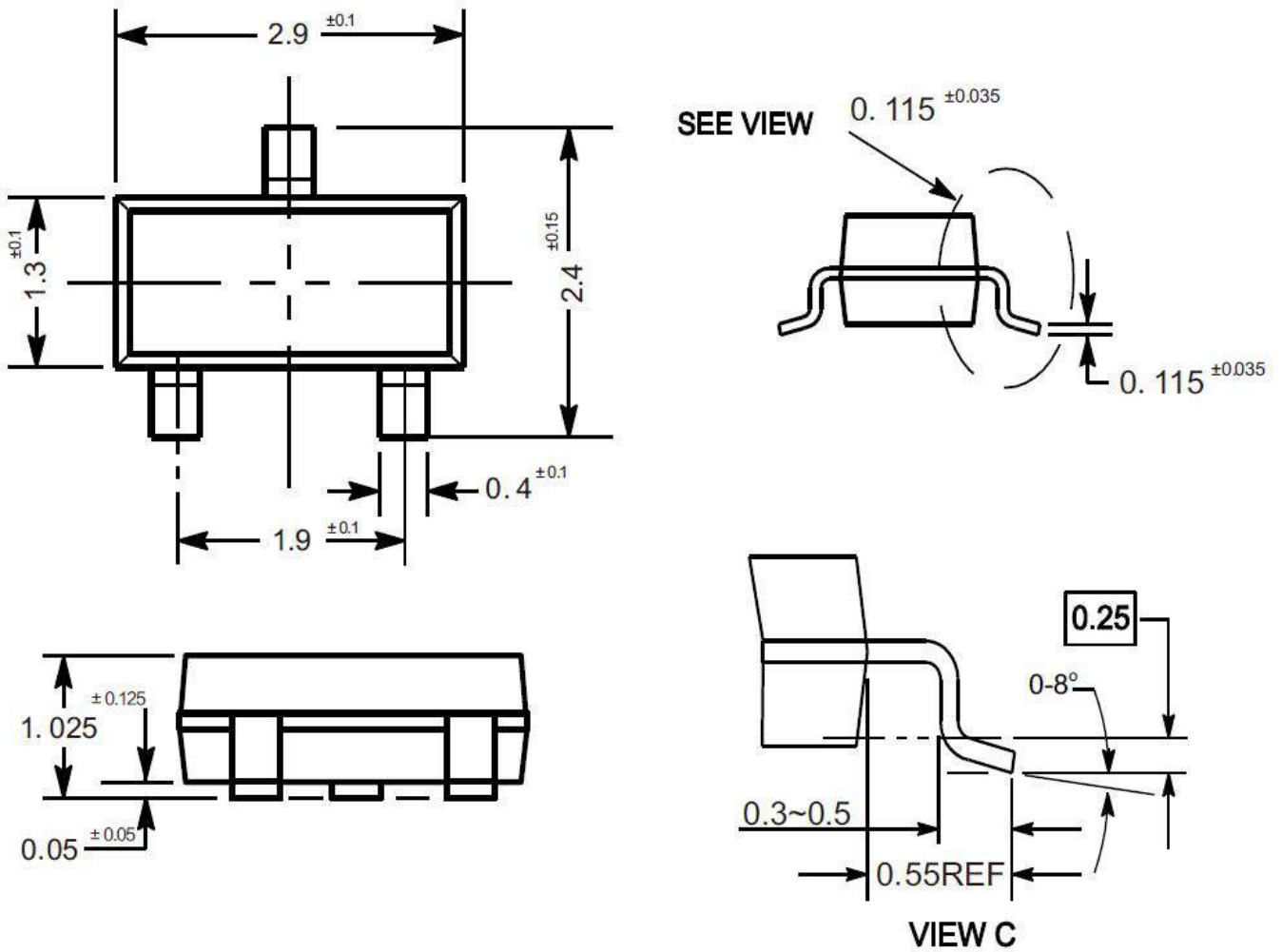
Typical Characteristic Curves



Package Outline

SOT-23

Dimensions in mm



Ordering Information

Device	Package	Shipping
GN431	SOT-23	3,000PCS/Reel&7inches

X-ON Electronics

Largest Supplier of Electrical and Electronic Components

Click to view similar products for [Voltage References](#) category:

Click to view products by [GN Semic](#) manufacturer:

Other Similar products are found below :

[AS431ARTR-E1](#) [AZ431BR-ATRE1](#) [5962-8686103XC](#) [NCV431BVDMR2G](#) [SCV431AIDMR2G](#) [REF01J/883](#) [SC431ILPRAG](#) [AP432AQG-7](#) [LM4040B25QFTA](#) [TL431BL3T](#) [TL431ACZ](#) [KA431SLMF2TF](#) [KA431SMF2TF](#) [KA431SMFTF](#) [LM4040QCEM3-3.0/NOPB](#) [LM4041C12ILPR](#) [LM4050AIM3X-5.0/NOPB](#) [LM4120AIM5-2.5/NOP](#) [LM431SCCMFX](#) [ZXRE250BSA-7](#) [ZXRE125DN8TA](#) [TS3330AQPR](#) [ZXRE250ASA-7](#) [ZTL431ASE5TA](#) [ADR3512WCRMZ-R7](#) [REF3012AIDBZR](#) [LM385BM-2.5/NOPB](#) [LM385D-2.5R2G](#) [LM4040AIM3-10.0](#) [LM4040CIM3-10.0](#) [LM4040CIM3X-2.0/NOPB](#) [LM4041DH5TA](#) [LM4041QDIM3-ADJ/NO](#) [LM4051BIM3-ADJ/NOPB](#) [LM4051CIM3X-1.2/NOPB](#) [LM4128CMF-1.8/NOPB](#) [LM4132DMF-1.8/NOPB](#) [LM4132EMF-1.8/NOPB](#) [LM4132EMF-2.0/NOPB](#) [LM431CIM](#) [LM385BD-2.5R2G](#) [LM385M-2.5/NOPB](#) [LM4030AMF-4.096/NOPB](#) [LM4040D30ILPR](#) [AP432YG-13](#) [AP431IANTR-G1](#) [AP431AWG-7](#) [AS431ANTR-G1](#) [AS431AZTR-G1](#) [AS431BZTR-E1](#)