

GoldX® Products

# GXMU-1200

USB TO SERIAL  
CONVERTER

Installation Manual  
& User Guide

## GXMU-1200 Installation Manual

Congratulations on your purchase of the GoldX™ USB to Serial Adapter. This adapter offers you the ability to convert your serial based peripherals to the USB port.

### Package Checklist

The GoldX USB to Serial Adapter product package includes the following items:

- USB Serial Adapter
- This User's Manual
- Registration Card

### System Requirements

- Pentium or Higher Class Processor
- One standard USB port (4 pin)
- One of the following

### Operating systems

- Windows 98SE
- Windows Millennium Edition
- Windows 2000 Professional
- Windows 2000 Server
- Windows XP Home
- Windows XP Professional

### Installation Instructions

Note: A compressed file Extractor/Expander is required to install this driver. If you do not have one you may download a free trial or free extractor out of one of the following sites:

[www.pkware.com](http://www.pkware.com)  
[www.rarlab.com](http://www.rarlab.com)

[www.winzip.com](http://www.winzip.com)  
[www.stufit.com](http://www.stufit.com)

For those with Windows XP, it has an Extractor built in to it.

1. Open Web browser
2. In address bar type [www.jditech.com](http://www.jditech.com).
3. Click **Go**
4. Type **GXMU-1200** in search field
5. Click **SEARCH**




6. Click **Details**

**Search Results for: GXMU-1200**

Item Name:  
**GoldX USB Converter**  
Description:  
**USB to DB 9 serial converter**

[Details](#)



## GXMU-1200 Installation Manual Warranty Information

### 24 Karat Warranty

Jo-Dan International, Inc. (JDI) warrants to the original owner that the product delivered in this package will be free from defects in material and workmanship for three (3) years after purchase. For the warranty to apply, you must provide the date of purchase and include proof of purchase. The warranty does not cover the product if it is damaged in the process of being installed, or is otherwise misused.

### Conditions

The above warranty is in lieu of any other warranty, whether expressed, implied or statutory, including but not limited to any warranty of merchantability, fitness for a particular purpose, or any warranty arising out of any proposal, specification or sample. JDI shall not be liable for incidental or consequential damages. JDI neither assumes nor authorizes any person to assume for it any other liability.

### Registration

**IMPORTANT:** IN ORDER TO BE ELIGIBLE FOR THE PRODUCT WARRANTY, YOU MUST COMPLETE THE REGISTRATION PROCESS ON OUR WEBSITE AT [WWW.JDITECH.COM](http://WWW.JDITECH.COM) WITHIN 10 DAYS OF PURCHASE.

### Disclaimer

The manufacturer does not make any representations or warranties (implied or otherwise) regarding the accuracy and completeness of this document and shall in no event be liable for any loss of profit or any other commercial damage, including but not limited to special, incidental, consequential, or other damages. JDI's policy is that all products meet their performance criteria. If the product performance criteria specified has failed, however, we will replace the product for the useable life of the product. No part of this document may be reproduced or transmitted in any form by any means, electronic or mechanical, including photocopying, recording or information recording and retrieval systems without the express written permission of the manufacturer. All brand names and product names used in this document are trademarks, or registered trademarks of their respective holders. JDI also reserves the right to update or revise the device or this documentation at any time without obligation to notify any individual or entity of such update, or revision. Revised versions of this document may be requested in writing to JDI. Copyright © 2005 Jo -Dan International, Inc. All rights reserved.

### FCC Statement

This device generates and uses radio frequency and may cause interference to radio and television reception if not installed and used properly. This has been tested and found to comply with the limits of a Class B computing device in accordance with the specifications in Part 15 of FCC Rules. These specifications are designed to provide reasonable protection against such interference in a residential installation. However, there is no guarantee that interference will not occur in a particular installation. If this device does cause harmful interference to radio or television reception, which can be determined by plugging the device in and out, the user can try to correct the interference by one or more of the following measures: Reorient or relocate the receiving antenna. Increase the separation between the device and receiver. Connect the computer into an outlet on a circuit different from that to which the receiver is connected. Consult the dealer or an experienced radio/TV technician for help.

## GXMU-1200 Installation Manual

7. Scroll to bottom
8. Find your operating system
9. Click **Download**

Drivers	
Windows 98 SE	Download
Windows ME	Download
Windows 2000 Pro	Download
Windows 2000 Server	Download
Windows XP Home	Download
Windows XP Pro	Download

10. Scroll to bottom
11. Click **I agree**

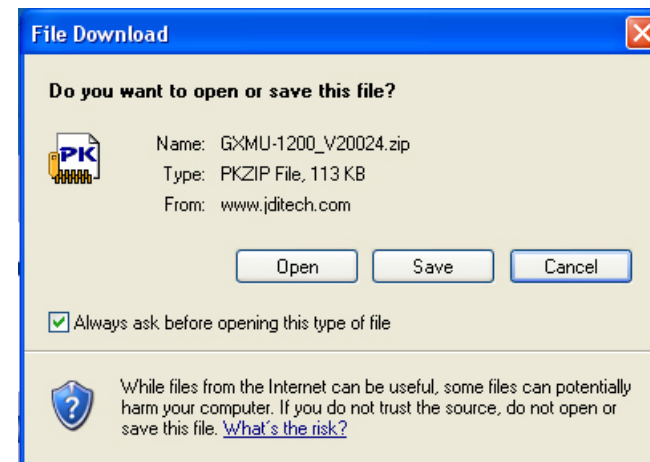
I agree

I do NOT agree

12. Follow instructions on the Web page



13. Click **Save**



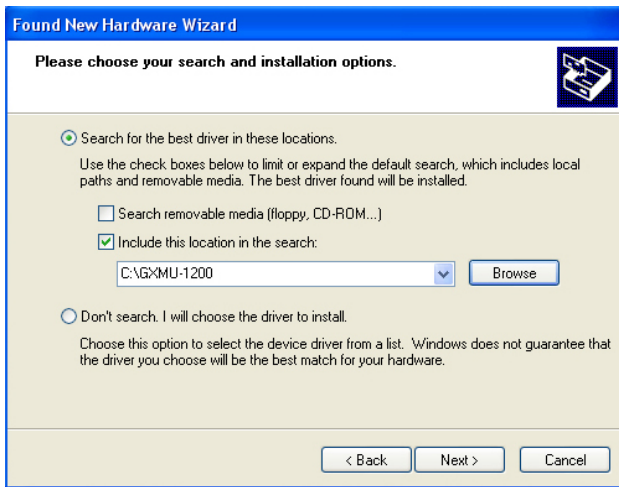
14. Choose location to save in (Note for step 16)
15. Find download file
16. Right click GXMU-1200\_v20024.ZIP

## GXMU-1200 Installation Manual

17. Select a directory
18. Extract files to chosen location
19. Plug in your GXMU-1200 or GXMU-1201
20. Chose **Install from a list or specific location (Advanced)**
21. Click **Next >**

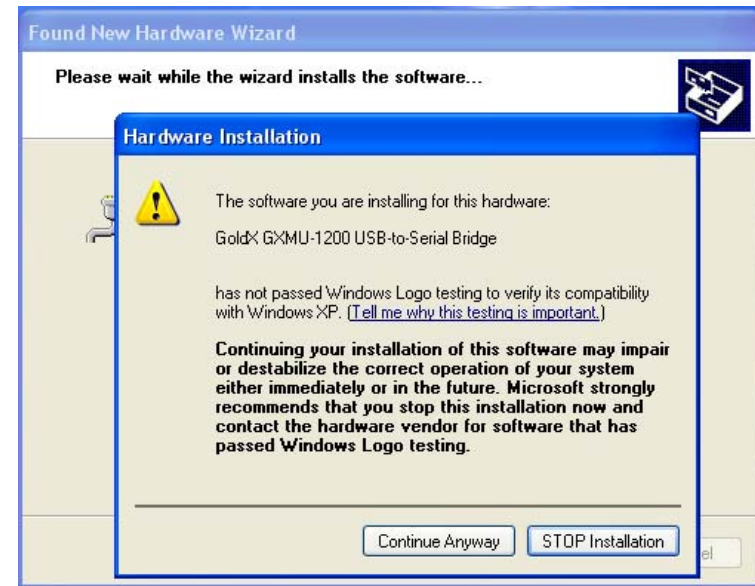


22. Chose **Search for the best driver in these locations**
23. Uncheck **Search removable media (floppy, CD-ROM...)**
24. Check **Include this location in the search:**
25. Click **Browse**
26. Select location of files extracted in step 17
27. Click **Next >**



## GXMU-1200 Installation Manual

28. If the hardware installation warning appears, click **Continue Anyway**



29. Click **Finish**



## **X-ON Electronics**

Largest Supplier of Electrical and Electronic Components

*Click to view similar products for [GOLDX manufacturer](#):*

Other Similar products are found below :

[PC6-WH-100](#) [C6MB-100GRN](#) [PC6-BL-50](#) [PC6-BK-100](#) [PC6-GY-50](#) [PC6-BL-100](#) [GX620-10](#) [PC6-BK-50](#) [PC6-WH-50](#) [PC6-WH-01](#) [PC6-YL-01](#) [PC6-WH-02](#) [PC6-BK-02](#) [GXMU-1200](#) [PC6-GY-02](#) [GP621-10](#) [PC6-BL-02](#) [PC6-BL-01](#) [PC6-PL-01](#) [PC6-BK-01](#)