



# FR201 thru FR207

Fast Recovery Rectifiers  
Reverse Voltage 50 to 1000 Volts Forward Current 2.0 Amperes

## Features

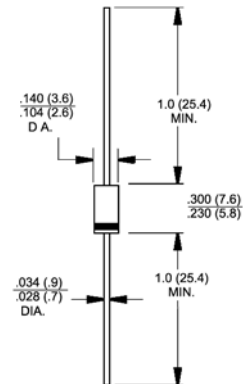
- ◆ Low forward voltage drop
- ◆ High current capability
- ◆ High reliability
- ◆ High surge current capability
- ◆  $T_J$  is 150°C (Max.) and  $T_{STG}$  is 175°C (Max.) with PI glue



DO-204AC (DO-15)

## Mechanical Data

- ◆ Case: Molded plastic DO-204AC (DO-15)
- ◆ Epoxy: UL 94V-O rate flame retardant
- ◆ Lead: Axial leads, solderable per MIL-STD-202, Method 208 guaranteed
- ◆ Polarity: Color band denotes cathode end
- ◆ High temperature soldering guaranteed:  
250°C/10 seconds .375" (9.5mm) lead lengths at 5 lbs., (2.3kg) tension
- ◆ Weight: 0.014 ounce, 0.39 gram



Dimensions in inches and (millimeters)

## Maximum Ratings and Electrical Characteristics

Ratings at 25°C ambient temperature unless otherwise specified.

Single phase, half wave, 60Hz, resistive or inductive load.

For capacitive load, derate current by 20%

Parameter	Symbols	FR201	FR202	FR203	FR204	FR205	FR206	FR207	Units	
Maximum repetitive peak reverse voltage	$V_{RRM}$	50	100	200	400	600	800	1000	Volts	
Maximum RMS voltage	$V_{RMS}$	35	70	140	280	420	560	700	Volts	
Maximum DC blocking voltage	$V_{DC}$	50	100	200	400	600	800	1000	Volts	
Maximum average forward rectified current 0.375" (9.5mm) lead length at $T_A=55^\circ\text{C}$	$I_{(AV)}$	2.0							Amps	
Peak forward surge current, 8.3 ms single half sine-wave superimposed on rated load (JEDEC Method)	$I_{FSM}$	60.0							Amps	
Maximum instantaneous forward voltage @ 2.0A	$V_F$	1.3							Volts	
Maximum DC reverse current at rated DC blocking voltage @ $T_A=25^\circ\text{C}$ @ $T_A=100^\circ\text{C}$	$I_R$	5.0 100							$\mu\text{A}$	
Maximum reverse recovery time (Note 1)	$t_{rr}$	150				250		500		nS
Typical junction capacitance (Note 2)	$C_J$	35							pF	
Operating junction temperature range	$T_J$	-55 to +125							$^\circ\text{C}$	
Storage temperature range	$T_{STG}$	-55 to +150							$^\circ\text{C}$	

- Notes:**
1. Reverse Recovery Test Conditions:  $I_F=0.5\text{A}$ ,  $I_R=1.0\text{A}$ ,  $I_{RR}=0.25\text{A}$
  2. Measured at 1 MHz and Applied Reverse Voltage of 4.0 V D.C.

# RATINGS AND CHARACTERISTIC CURVES

FIG.1- MAXIMUM FORWARD CURRENT DERATING CURVE

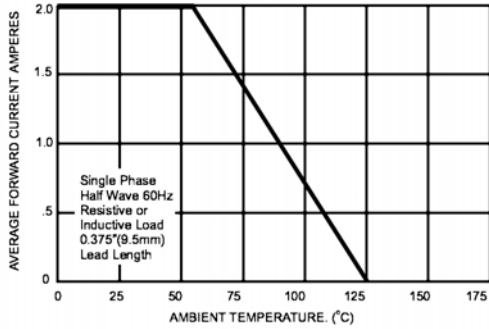


FIG.2- MAXIMUM NON-REPETITIVE PEAK FORWARD SURGE CURRENT

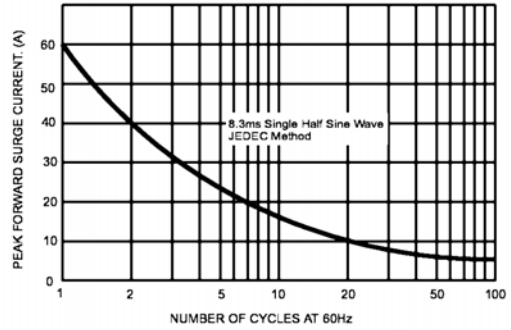


FIG.3- TYPICAL FORWARD CHARACTERISTICS

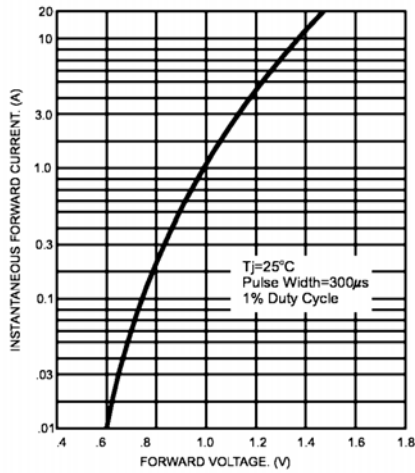


FIG.4- TYPICAL JUNCTION CAPACITANCE

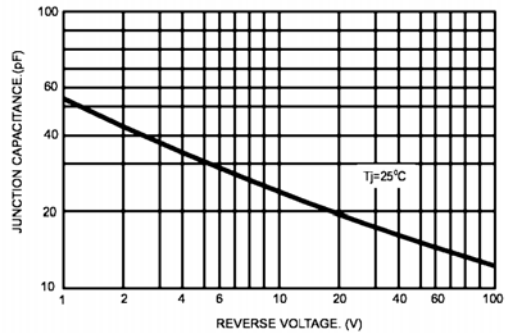
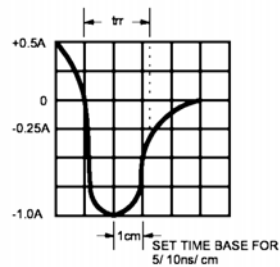
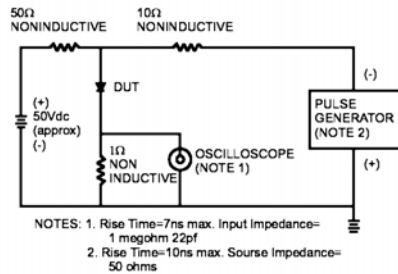


FIG.5- REVERSE RECOVERY TIME CHARACTERISTIC AND TEST CIRCUIT DIAGRAM



## X-ON Electronics

Largest Supplier of Electrical and Electronic Components

*Click to view similar products for [Rectifiers](#) category:*

*Click to view products by [Good-Ark](#) manufacturer:*

Other Similar products are found below :

[70HFR40](#) [FR105 R0](#) [RL252-TP](#) [DLA11C-TR-E](#) [DSA17G](#) [150KR30A](#) [1N5397](#) [1N4002G](#) [1N4005-TR](#) [UFS120Je3/TR13](#) [JANS1N6640US](#)  
[481235F](#) [RRE02VS6SGTR](#) [067907F](#) [MS306](#) [70HF40](#) [T110HF60](#) [T85HFL60S02](#) [US2JFL-TP](#) [A1N5404G-G](#) [CRS04\(T5L,TEMQ\)](#)  
[CRS12\(T5L,TEMQ\)](#) [ACGRB207-HF](#) [CLH07\(TE16L,Q\)](#) [CLH03\(TE16L,Q\)](#) [ACGRC307-HF](#) [ACEFC304-HF](#) [NTE6356](#) [NTE6359](#) [85HFR60](#)  
[40HFR60](#) [70HF120](#) [85HFR80](#) [D126A45C](#) [SCF7500](#) [D251N08B](#) [SCHJ22.5K](#) [SM100](#) [SCPA2](#) [SDHD5K](#) [VS-12FL100S10](#) [ACGRA4001-](#)  
[HF](#) [ACURA107-HF](#) [D1821SH45T PR](#) [D1251S45T](#) [NTE6358](#) [NTE5850](#) [NTE5819](#) [NTE5837](#) [NTE5892](#)