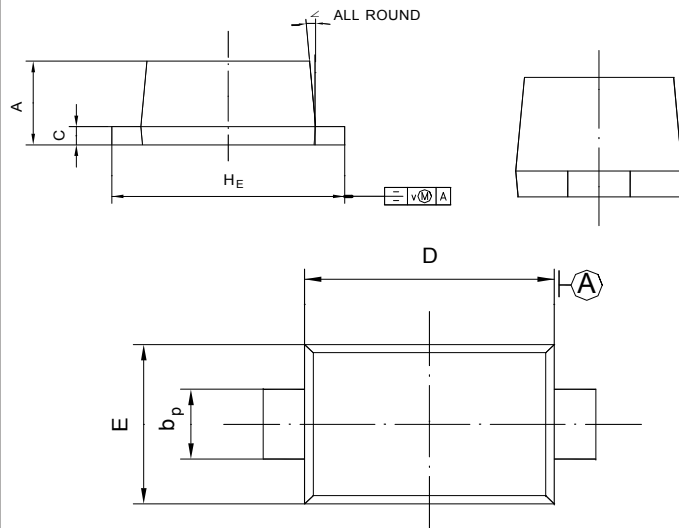


FEATURES

- Metal silicon junction, majority carrier conduction
- Guarding for overvoltage protection
- Low power loss, high efficiency
- High current capability
- low forward voltage drop
- High surge capability
- For use in low voltage, high frequency inverters, free wheeling, and polarity protection applications

MECHANICAL DATA

- Case: SOD-523
- Terminals: Solderable per MIL-STD-750, Method 2026



| UNIT | A | b _p | C | D | E | H _E | V | ∠ |
|------|--------------|----------------|----------------|--------------|--------------|----------------|-----|----|
| mm | 0.70 0.60 | 0.4 0.3 | 0.135 0.100 | 1.25 1.15 | 0.85 0.75 | 1.7 1.5 | 0.1 | 5° |

Absolute Maximum Ratings (T_a = 25 °C)

| Parameter | Symbol | Value | Unit |
|--|-----------------------------------|---------------|------|
| Peak Repetitive Reverse Voltage | V _{RRM} | 40 | V |
| Reverse Voltage | V _R | 40 | V |
| Average Forward Rectified Current | I _{F(AV)} | 350 | mA |
| Non-Repetitive Peak Forward Surge Current at t = 1 s | I _{FSM} | 2 | A |
| Power Dissipation | P _{tot} | 200 | mW |
| Operating and Storage Temperature Range | T _j , T _{stg} | - 65 to + 125 | °C |

B5819WT

Characteristics at $T_a = 25\text{ }^\circ\text{C}$

| Parameter | Symbol | Min. | Typ. | Max. | Unit |
|--|-------------|--------|-------------|-------------|---------------|
| Reverse Breakdown Voltage at $I_R = 10\text{ }\mu\text{A}$ | $V_{(BR)R}$ | 40 | - - - | - - - | V |
| Reverse Leakage Current at $V_R = 30\text{ V}$ | I_R | - - | - - | 5 | μA |
| Forward Voltage at $I_F = 20\text{ mA}$ at $I_F = 200\text{ mA}$ | V_F | - - | - - | 0.37 0.6 | V |
| Total Capacitance at $V_R = 0\text{ V}$, $f = 1\text{ MHz}$ | C_T | - | 50 | - | pF |
| Reverse Recovery Time at $I_F = I_R = 200\text{ mA}$, $I_{rr} = 0.1 I_R$, $R_L = 100\text{ }\Omega$ | t_{rr} | - | 10 | - | ns |

RATING AND CHARACTERISTIC CURVES (B5819WT)

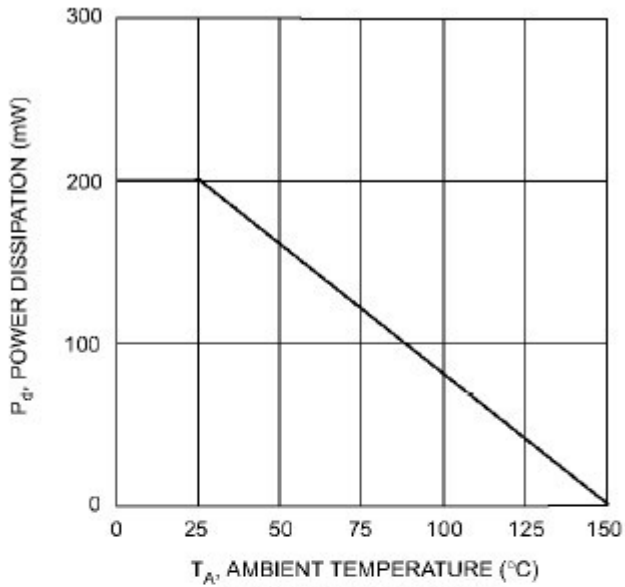


Fig. 1 Power Derating Curve

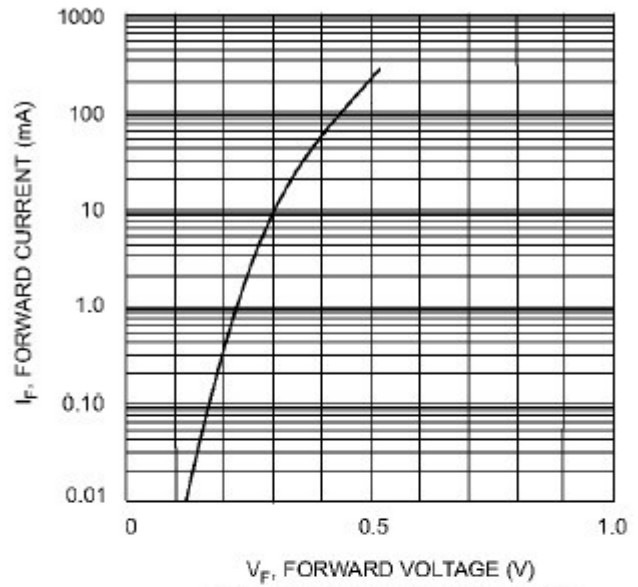


Fig. 2 Typical Forward Characteristics

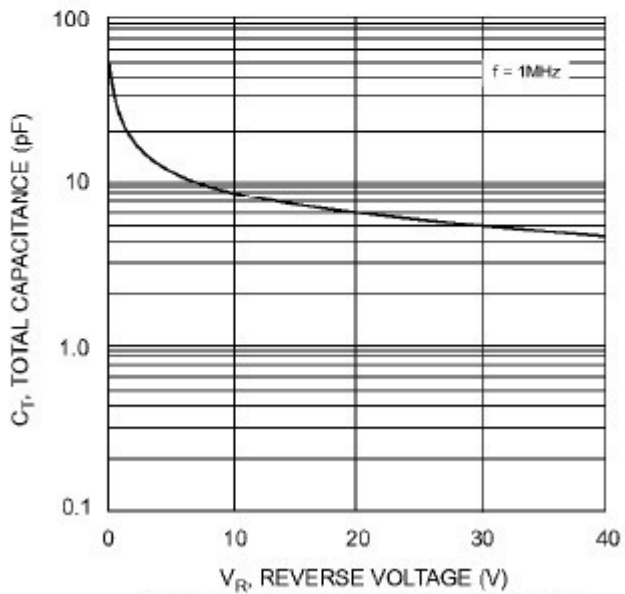


Fig. 3 Total Capacitance vs Reverse Voltage

X-ON Electronics

Largest Supplier of Electrical and Electronic Components

Click to view similar products for [Schottky Diodes & Rectifiers](#) category:

Click to view products by [GOODWORK](#) manufacturer:

Other Similar products are found below :

[MA4E2039](#) [MMBD301M3T5G](#) [RB160M-50TR](#) [D83C](#) [BAS16E6433HTMA1](#) [BAS 3010S-02LRH E6327](#) [BAT 54-02LRH E6327](#)
[NRVBAF360T3G](#) [NSR05F40QNXT5G](#) [NTE555](#) [JANS1N6640](#) [SS3003CH-TL-E](#) [GA01SHT18](#) [CRS10I30A\(TE85L,QM](#) [MBRA140TRPBF](#)
[MBRB30H30CT-1G](#) [BAT 15-04R E6152](#) [JANTX1N5712-1](#) [DMJ3940-000](#) [SB007-03C-TB-E](#) [NRVBB20100CTT4G](#) [NRVBM120LT1G](#)
[NTSB30U100CT-1G](#) [CRG04\(T5L,TEMQ\)](#) [ACDBA1100LR-HF](#) [ACDBA1200-HF](#) [ACDBA240-HF](#) [ACDBA3100-HF](#) [CDBQC0530L-HF](#)
[ACDBA260LR-HF](#) [ACDBA1100-HF](#) [10BQ015-M3/5BT](#) [NRVBM120ET1G](#) [VSSB410S-M3/5BT](#) [1N5819T-G](#) [PDS1040Q-13](#) [B160BQ-13-F](#)
[SDM05U20CSP-7](#) [BAS 70-07 E6433](#) [B140S1F-7](#) [HSM560Je3/TR13](#) [DDB2265-000](#) [ZHCS506QTA](#) [HSM190Je3/TR13](#) [B330AF-13](#)
[ACDBUC0230-HF](#) [SDM1U100S1F-7](#) [MBR10200CTF-G1](#) [CDLL5712](#) [DMF2822-000](#)