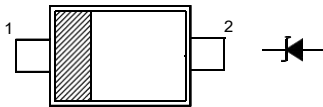


**Features**

- Standard Zener Breakdown Voltage Range  
2.0 V to 75 V
- Steady State Power Rating of 200 mW

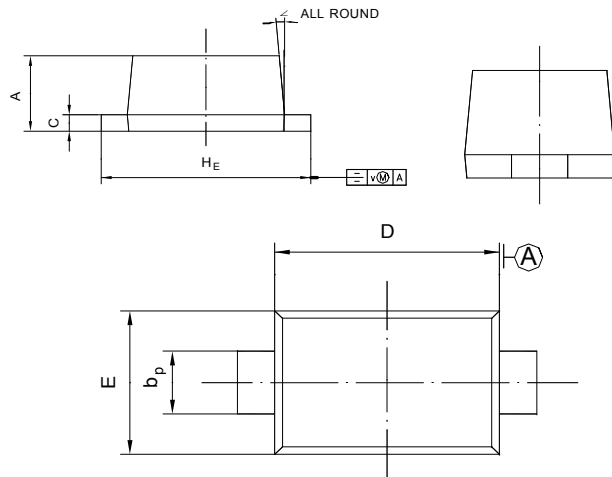
**PINNING**

| PIN | DESCRIPTION |
|-----|-------------|
| 1   | Cathode     |
| 2   | Anode       |



Top View

Simplified outline SOD-523 and symbol



| UNIT | A            | b <sub>p</sub> | C              | D            | E            | H <sub>E</sub> | V   | ∠  |
|------|--------------|----------------|----------------|--------------|--------------|----------------|-----|----|
| mm   | 0.70<br>0.60 | 0.4<br>0.3     | 0.135<br>0.100 | 1.25<br>1.15 | 0.85<br>0.75 | 1.7<br>1.5     | 0.1 | 5° |

**Absolute Maximum Ratings (T<sub>a</sub> = 25 °C)**

| Parameter                              | Symbol                            | Value         | Unit |
|--|-----------------------------------|---------------|------|
| Total Device Dissipation               | P <sub>tot</sub>                  | 200           | mW   |
| Junction and Storage Temperature Range | T <sub>j</sub> , T <sub>stg</sub> | - 65 to + 150 | °C   |

**Characteristics at T<sub>a</sub> = 25 °C**

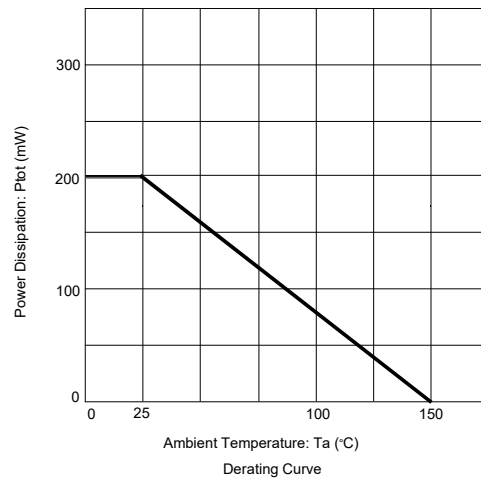
| Parameter                                    | Symbol         | Max. | Unit |
|--|----------------|------|------|
| Forward Voltage<br>at I <sub>F</sub> = 10 mA | V <sub>F</sub> | 0.9  | V    |

## MM5Z2V0~MM5Z75

| Type    | Marking Code | Zener Voltage <sup>1)</sup> |      |      |                    | Zener Impedance |                 |                    | Leakage Current |                   |
|---------|--------------|-----------------------------|------|------|--------------------|-----------------|-----------------|--------------------|-----------------|-------------------|
|         |              | V <sub>ZT</sub> (V)         |      |      | at I <sub>ZT</sub> | Z <sub>ZT</sub> | Z <sub>ZK</sub> | at I <sub>ZK</sub> | I <sub>R</sub>  | at V <sub>R</sub> |
|         |              | Min.                        | Nom. | Max. | mA                 | Ω               | Ω               | mA                 | μA              | V                 |
| MM5Z2V0 | WY           | 1.8                         | 2.0  | 2.15 | 5                  | 100             | -               | -                  | 120             | 0.5               |
| MM5Z2V2 | RE           | 2.08                        | 2.2  | 2.33 | 5                  | 100             | -               | -                  | 120             | 0.7               |
| MM5Z2V4 | 00           | 2.2                         | 2.4  | 2.6  | 5                  | 100             | 1000            | 1                  | 120             | 1                 |
| MM5Z2V7 | 01           | 2.5                         | 2.7  | 2.9  | 5                  | 100             | 1000            | 1                  | 120             | 1                 |
| MM5Z3V0 | 02           | 2.8                         | 3.0  | 3.2  | 5                  | 100             | 1000            | 1                  | 50              | 1                 |
| MM5Z3V3 | 05           | 3.1                         | 3.3  | 3.5  | 5                  | 95              | 1000            | 1                  | 20              | 1                 |
| MM5Z3V6 | 06           | 3.4                         | 3.6  | 3.8  | 5                  | 90              | 1000            | 1                  | 10              | 1                 |
| MM5Z3V9 | 07           | 3.7                         | 3.9  | 4.1  | 5                  | 90              | 1000            | 1                  | 5               | 1                 |
| MM5Z4V3 | 08           | 4                           | 4.3  | 4.6  | 5                  | 90              | 1000            | 1                  | 5               | 1                 |
| MM5Z4V7 | 09           | 4.4                         | 4.7  | 5    | 5                  | 80              | 800             | 1                  | 2               | 1                 |
| MM5Z5V1 | 0A           | 4.8                         | 5.1  | 5.4  | 5                  | 60              | 500             | 1                  | 2               | 1.5               |
| MM5Z5V6 | 0C           | 5.2                         | 5.6  | 6    | 5                  | 40              | 200             | 1                  | 1               | 2.5               |
| MM5Z6V2 | 0E           | 5.8                         | 6.2  | 6.6  | 5                  | 10              | 100             | 1                  | 1               | 3                 |
| MM5Z6V8 | 0F           | 6.4                         | 6.8  | 7.2  | 5                  | 15              | 160             | 1                  | 0.5             | 3.5               |
| MM5Z7V5 | 0G           | 7                           | 7.5  | 7.9  | 5                  | 15              | 160             | 1                  | 0.5             | 4                 |
| MM5Z8V2 | 0H           | 7.7                         | 8.2  | 8.7  | 5                  | 15              | 160             | 1                  | 0.5             | 5                 |
| MM5Z9V1 | 0K           | 8.5                         | 9.1  | 9.6  | 5                  | 15              | 160             | 1                  | 0.5             | 6                 |
| MM5Z10  | 0L           | 9.4                         | 10   | 10.6 | 5                  | 20              | 160             | 1                  | 0.1             | 7                 |
| MM5Z11  | 0M           | 10.4                        | 11   | 11.6 | 5                  | 20              | 160             | 1                  | 0.1             | 8                 |
| MM5Z12  | 0N           | 11.4                        | 12   | 12.7 | 5                  | 25              | 80              | 1                  | 0.1             | 9                 |
| MM5Z13  | 0P           | 12.4                        | 13   | 14.1 | 5                  | 30              | 80              | 1                  | 0.1             | 10                |
| MM5Z15  | 0T           | 14.3                        | 15   | 15.8 | 5                  | 30              | 80              | 1                  | 0.1             | 11                |
| MM5Z16  | 0U           | 15.3                        | 16   | 17.1 | 2                  | 40              | 80              | 1                  | 0.1             | 12                |
| MM5Z18  | 0W           | 16.8                        | 18   | 19.1 | 2                  | 45              | 80              | 1                  | 0.1             | 13                |
| MM5Z20  | 0Z           | 18.8                        | 20   | 21.2 | 2                  | 55              | 100             | 1                  | 0.1             | 15                |
| MM5Z22  | 10           | 20.8                        | 22   | 23.3 | 2                  | 55              | 100             | 1                  | 0.1             | 17                |
| MM5Z24  | 11           | 22.8                        | 24   | 25.6 | 2                  | 70              | 120             | 1                  | 0.1             | 19                |
| MM5Z27  | 12           | 25.1                        | 27   | 28.9 | 2                  | 80              | 300             | 1                  | 0.1             | 21                |
| MM5Z30  | 14           | 28                          | 30   | 32   | 2                  | 80              | 300             | 1                  | 0.1             | 23                |
| MM5Z33  | 18           | 31                          | 33   | 35   | 2                  | 80              | 300             | 1                  | 0.1             | 25                |
| MM5Z36  | 19           | 34                          | 36   | 38   | 2                  | 90              | 500             | 1                  | 0.1             | 27                |
| MM5Z39  | 20           | 37                          | 39   | 41   | 2                  | 130             | 500             | 1                  | 2               | 30                |
| MM5Z43  | 21           | 40                          | 43   | 46   | 1                  | 150             | 500             | 1                  | 2               | 33                |
| MM5Z47  | 1A           | 44                          | 47   | 50   | 1                  | 170             | 500             | 1                  | 2               | 36                |
| MM5Z51  | 1C           | 48                          | 51   | 54   | 1                  | 180             | 500             | 1                  | 1               | 39                |
| MM5Z56  | 1D           | 52                          | 56   | 60   | 1                  | 200             | 500             | 1                  | 1               | 43                |
| MM5Z62  | 1E           | 58                          | 62   | 66   | 1                  | 215             | 500             | 1                  | 0.2             | 47                |
| MM5Z68  | 1F           | 64                          | 68   | 72   | 1                  | 240             | 500             | 1                  | 0.2             | 52                |
| MM5Z75  | 1G           | 70                          | 75   | 79   | 1                  | 255             | 500             | 1                  | 0.2             | 57                |

<sup>1)</sup> Tested with pulses t<sub>p</sub> = 20 ms.

## RATING AND CHARACTERISTIC CURVES( MM5Z2V0 THRU MM5Z75 )



## X-ON Electronics

Largest Supplier of Electrical and Electronic Components

*Click to view similar products for [Zener Diodes](#) category:*

*Click to view products by [GOODWORK](#) manufacturer:*

Other Similar products are found below :

[RKZ13B2KG#P1](#) [DL5234B](#) [EDZTE6113B](#) [1N4682](#) [1N4693](#) [1N4732A](#) [1N4736A](#) [1N4750A](#) [1N4759ARL](#) [1N5241B](#) [1N5365B](#) [1N5369B](#)  
[1N747A](#) [1N964B](#) [1N966B](#) [1N968B](#) [1N972B](#) [JANS1N4974US](#) [JANTX1N5907](#) [1N4692](#) [1N4700](#) [1N4702](#) [1N4704](#) [1N4711](#) [1N4714](#)  
[1N4745ARL](#) [1N4752ARL](#) [1N4760ARL](#) [1N5221B](#) [1N5242BTR](#) [1N5350B](#) [1N5352B](#) [1N961BRR1](#) [1N964BRL](#) [RKZ5.1BKU#P6](#)  
[3SMAJ5946B-TP](#) [3SMAJ5950B-TP](#) [3SMBJ5925B-TP](#) [MMSZ5230BQ-13-F](#) [MMSZ5232BQ-13-F](#) [BZX84C7V5](#) [3SMAJ5945B-TP](#)  
[3SMAJ5947B-TP](#) [3SMBJ5941B-TP](#) [DL4732A-T3](#) [DZ2S240M0L](#) [SMAZ27-TP](#) [ZMM5224B-7](#) [RD16UM-T1-A](#) [RD39S-T1-A](#)