



### FEATURES

- \* Ideal for surface mount applications
- \* Easy pick and place
- \* Built-in strain relief
- \* Fast switching speed

### MECHANICAL DATA

- \* Case: Molded plastic
- \* Epoxy: UL 94V-0 rate flame retardant
- \* Metallurgically bonded construction
- \* Polarity: Color band denotes cathode end
- \* Mounting position: Any
- \* Weight: 0.063 grams

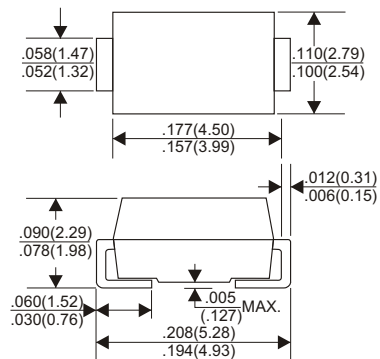
### VOLTAGE RANGE

50 to 1000 Volts

### CURRENT

2.0 Ampere

#### DO-214AC(SMA)



## MAXIMUM RATINGS AND ELECTRICAL CHARACTERISTICS

Rating 25°C ambient temperature unless otherwise specified.  
Single phase half wave, 60Hz, resistive or inductive load.  
For capacitive load, derate current by 20%.

| TYPE NUMBER   | RS2A       | RS2B | RS2D | RS2G | RS2J | RS2K | RS2M | UNITS |
|---|------------|------|------|------|------|------|------|-------|
| Maximum Recurrent Peak Reverse Voltage  | 50         | 100  | 200  | 400  | 600  | 800  | 1000 | V     |
| Maximum RMS Voltage   | 35         | 70   | 140  | 280  | 420  | 560  | 700  | V     |
| Maximum DC Blocking Voltage   | 50         | 100  | 200  | 400  | 600  | 800  | 1000 | V     |
| Maximum Average Forward Rectified Current<br>at Ta=90°C   | 2.0        |      |      |      |      |      |      | A     |
| Peak Forward Surge Current, 8.3 ms single half sine-wave<br>superimposed on rated load (JEDEC method) | 50         |      |      |      |      |      |      | A     |
| Maximum Instantaneous Forward Voltage at 2.0A   | 1.3        |      |      |      |      |      |      | V     |
| Maximum DC Reverse Current<br>Ta=25°C   | 5.0        |      |      |      |      |      |      | A     |
| at Rated DC Blocking Voltage<br>Ta=125°C  | 300        |      |      |      |      |      |      | A     |
| Maximum Reverse Recovery Time (Note 1)  | 150        |      |      | 250  |      | 500  |      | nS    |
| Typical Junction Capacitance (Note 2)   | 50         |      |      |      |      |      |      | pF    |
| Operating and Storage Temperature Range Tj, Tstg  | -65 — +150 |      |      |      |      |      |      | °C    |

#### NOTES:

- Reverse Recovery Time test condition: IF=0.5A, IR=1.0A, IRR=0.25A
- Measured at 1MHz and applied reverse voltage of 4.0V D.C.

## RATING AND CHARACTERISTIC CURVES (RS2A THRU RS2M)

FIG.1-TYPICAL FORWARD CHARACTERISTICS

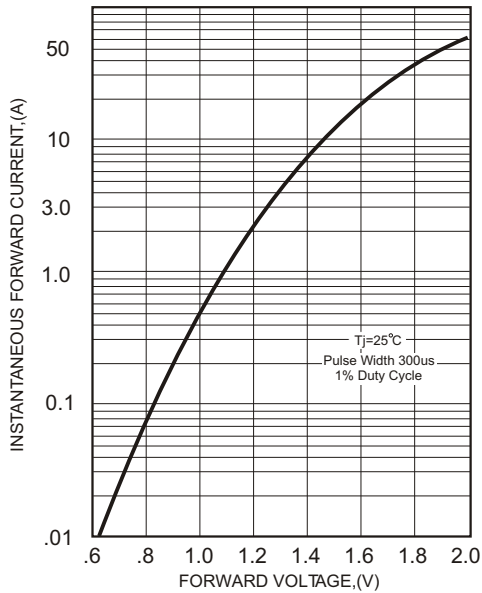


FIG.2-TYPICAL FORWARD CURRENT DERATING CURVE

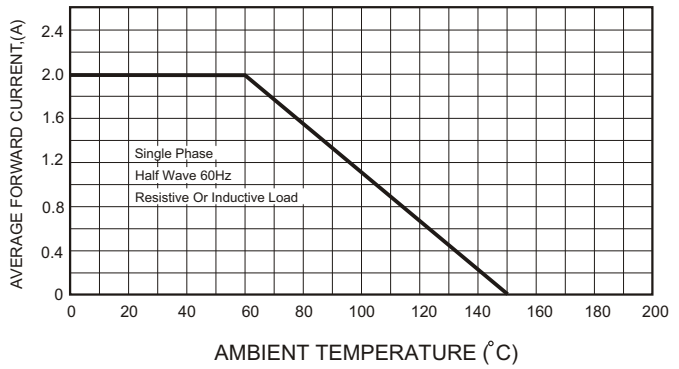


FIG.4-MAXIMUM NON-REPETITIVE FORWARD SURGE CURRENT

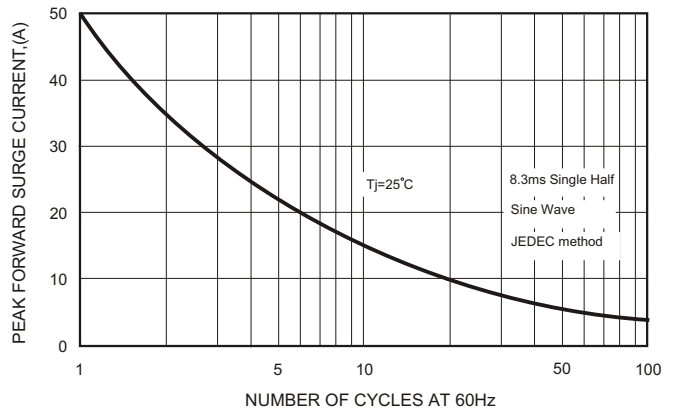
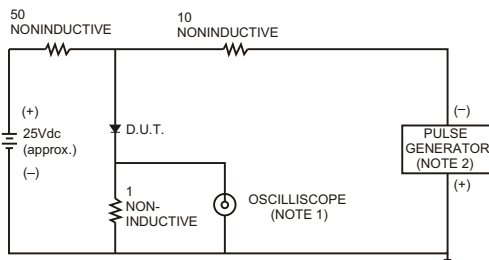


FIG.3- TEST CIRCUIT DIAGRAM AND REVERSE RECOVERY TIME CHARACTERISTICS



- NOTES: 1. Rise Time= 7ns max., Input Impedance= 1 megohm, 22pF.  
2. Rise Time= 10ns max., Source Impedance= 50 ohms.

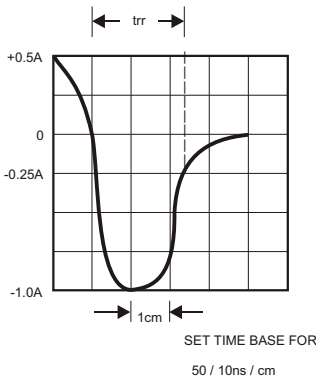
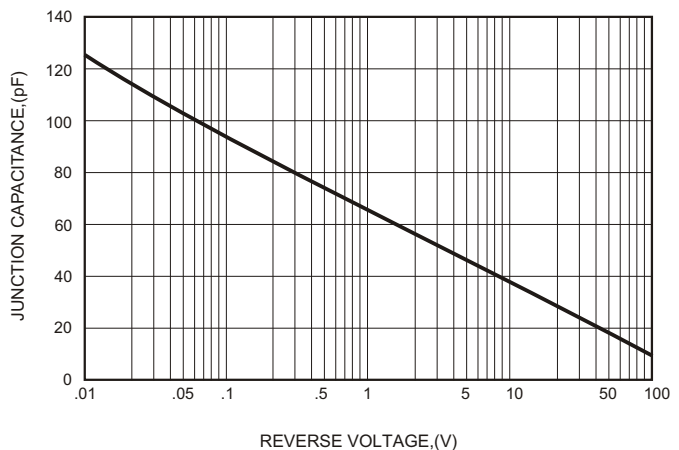


FIG.5-TYPICAL JUNCTION CAPACITANCE



## X-ON Electronics

Largest Supplier of Electrical and Electronic Components

*Click to view similar products for [Rectifiers](#) category:*

*Click to view products by [GOODWORK](#) manufacturer:*

Other Similar products are found below :

[70HFR40](#) [FR105 R0](#) [RL252-TP](#) [150KR30A](#) [1N5397](#) [1N4002G](#) [1N4005-TR](#) [UFS120Je3/TR13](#) [JANS1N6640US](#) [481235F](#)  
[RRE02VS6SGTR](#) [067907F](#) [MS306](#) [70HF40](#) [T110HF60](#) [T85HFL60S02](#) [US2JFL-TP](#) [A1N5404G-G](#) [CRS12\(T5L,TEMQ\)](#) [ACGRB207-HF](#)  
[CLH07\(TE16L,Q\)](#) [CLH03\(TE16L,Q\)](#) [ACGRC307-HF](#) [ACEFC304-HF](#) [NTE6356](#) [NTE6359](#) [85HFR60](#) [40HFR60](#) [70HF120](#) [85HFR80](#)  
[D126A45C](#) [SCF7500](#) [D251N08B](#) [SCHJ22.5K](#) [SM100](#) [SCPA2](#) [SDHD5K](#) [ACGRA4001-HF](#) [ACURA107-HF](#) [D1821SH45T PR](#) [D1251S45T](#)  
[NTE6358](#) [NTE5850](#) [NTE5819](#) [NTE5837](#) [NTE5892](#) [NTE5900](#) [NTE5911](#) [NTE5915](#) [NTE5921](#)