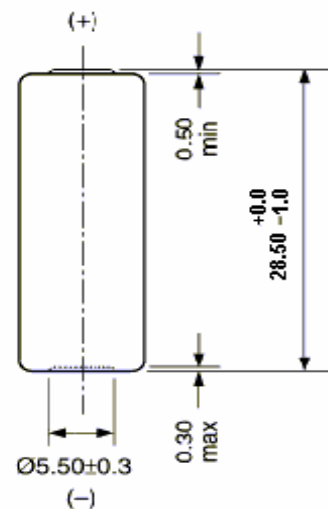
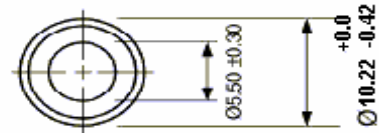


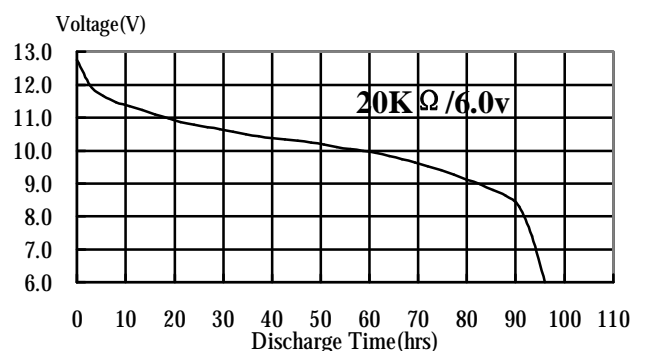
<b>Description</b>	: Mercury Free & Lead Free Alkaline High Voltage Multicell
<b>Nominal Voltage</b>	: 12Volts
<b>Nominal Dimensions</b>	: Ø10.22mm×28.5mm
<b>Terminal</b>	: Nickel plated flat contacts - protruded red(+); recessed black (-)
<b>Jacket</b>	: Metal jacket
<b>Internal Connection</b>	: Pressure
<b>Applications</b>	: Remote controller
<b>Average Weight</b>	: 7.5g
<b>Date Code</b>	: Unless otherwise specified, each batteries will carry a numeric year code and analogue month code (+)
<b>Insulation</b>	: 5MΩ min.
<b>Resistance</b>	
<b>Close Circuit Voltage</b>	: 10.4 Volts (min.)(load resistor1.6KΩ at 20 ± 2 °C for 0.1 to 2 seconds)
<b>Current Drain</b>	: Under 15mA pulse, 0.5mA Continuous
<b>Nominal Service Life</b>	: 95hrs (at 20kΩ load) (to 6.0V at 20 ± 2 °C)
<b>Average Service</b>	: 46mAh(at 20kΩ load)
<b>Capacity</b>	(to 6.0V at 20 ± 2 °C)

Model No.: **GP/GN23AF (HC)**



Unit : mm

Typical Discharge characteristics for Reference only at 20 ± 2 °C



The information (subject to change without prior notice) contained in this document is for reference only and should not be used as a basis for product guarantee or warranty. For applications other than those described here, please consult your nearest GP Sales and Marketing Office or Distributors.

## X-ON Electronics

Largest Supplier of Electrical and Electronic Components

*Click to view similar products for [Cylindrical Battery Contacts, Clips, Holders & Springs](#) category:*

*Click to view products by [GP Batteries](#) manufacturer:*

Other Similar products are found below :

[12BH36A-GR](#) [200](#) [161](#) [183](#) [270](#) [QX3506](#) [5220](#) [5230](#) [1055](#) [1088](#) [5250](#) [KT0008](#) [1119](#) [5207](#) [246](#) [BWCD-L4.5W2.0H2.3](#) [BWCD-L6.0W2.0H2.0](#) [BW0041BG-L2.5W1.0H1.5](#) [BW0031AG-L3.5W1.0H3.0](#) [BWCD-L5.0W2.0H2.5](#) [BW0019CG-L3.5W1.5H4.3](#) [BW0036AG-L3.5W1.0H1.4](#) [BW0034AG-L3.5W0.9H1.5](#) [BW0033BG-L3.4W0.9H2.0](#) [BW0041CG-L2.5W1.0H1.8](#) [BW0028AG-L3.5W1.5H2.05](#) [BW0098DG-L4.0W1.5H2.0](#) [BW0019BG-L3.5W1.5H3.8](#) [BWCD-L6.5W2.0H2.0](#) [BWCD-L4.0W2.0H1.0](#) [BWCD-L5.5W2.0H3.0](#) [BW0019AG-L3.5W1.5H3.5](#) [BWCD-L3W2.0H1.0](#) [ECT818002831](#) [ECT81800A081](#) [ECT818003141](#) [ECT81800B009](#) [ECT818002399](#) [F9-7-6-0.4Z](#) [F8-10-0.4-1.3](#) [F10-10-6-0.4-1.3](#) [F8-8-5-0.4Z](#) [F10-12-0.4-1.3](#) [F10-10-6.5-0.4P](#) [F10-10-6.5-0.4 Z](#) [GP SUPER 14A \(LR14\) SHRINK 2 LR20 INDUSTRIAL INTENSE](#) [CW332](#) [HC4](#) [PCL5A](#)