

Model No.: **GP24E**

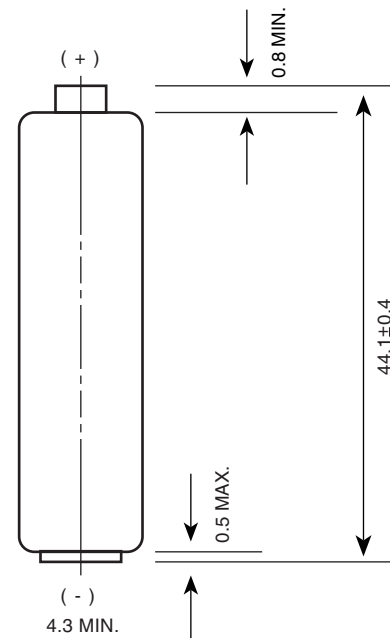
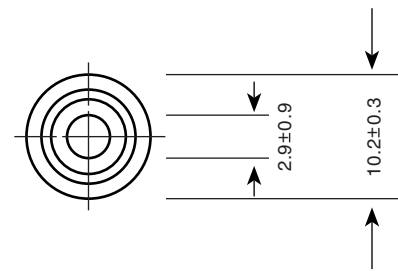
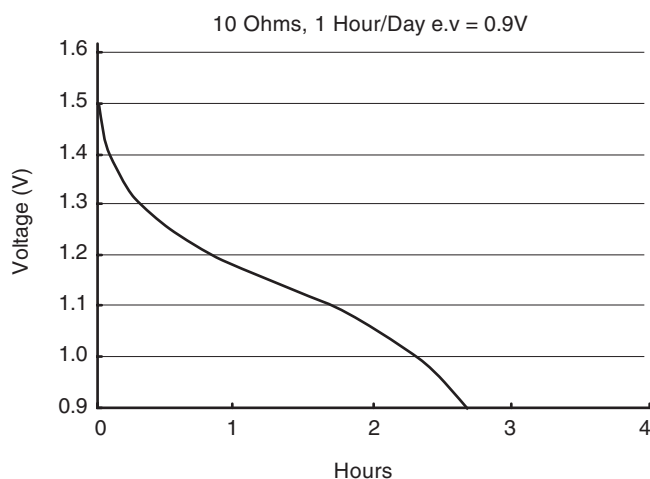
<b>NO MERCURY ADDED</b>	
<b>Description</b>	: Heavy Duty Battery, AAA Size
<b>Chemical System</b>	: Carbon Zinc
<b>Nominal Voltage</b>	: 1.5 Volts
<b>Nominal Dimensions</b>	: $\varnothing 10.5$ mm x 44.5 mm
<b>Terminals</b>	: Protruded positive (+) and flat negative (-) contacts
<b>Jacket</b>	: Printed PVC shrink sleeve
<b>Applications</b>	: All electronic devices, e.g. toys, data banks, audio appliances, calculators, remote controls, paging machines.
<b>Warranty Period</b>	: 36 months
<b>Average Weight</b>	: 8.5g

### Cross References:

GP	JIS	IEC	Eveready
24E	R03	R03	912

### Typical Service Life:

Discharge Resistance	Discharge Condition	End Point Voltage	Service Life
10 Ohms	1 Hr/ Day	0.9V	2.7 Hrs



Unit : mm

The information (subject to change without prior notice) contained in this document is for reference only and should not be used as a basis for product guarantee or warranty. For applications other than those described here, please consult your nearest GP Sales and Marketing Office or Distributors.

## X-ON Electronics

Largest Supplier of Electrical and Electronic Components

*Click to view similar products for [Cylindrical Battery Contacts, Clips, Holders & Springs](#) category:*

*Click to view products by [GP Batteries](#) manufacturer:*

Other Similar products are found below :

[753-00001](#) [12BH36A-GR](#) [200](#) [183](#) [270](#) [QX3506](#) [5220](#) [5230](#) [1055](#) [1088](#) [5250](#) [166](#) [591](#) [1044](#) [KT0008](#) [1119](#) [254TR](#) [5207](#) [1121](#) [246](#)  
[4027003022001-PK](#) [12BHC186P2-GR](#) [9V \(6LR61\)](#) [PX1604](#) [GP24E](#) [OKY3399-1](#) [PCM-F04S40 DALY](#) [5000394132023](#) [PCM-F04S30](#)  
[DALY](#) [PCM-F08S40 DALY](#) [PCM-F08S60 DALY](#) [PCM-L13S20 DALY](#) [1012](#) [1020](#) [1023](#) [1024](#) [1075](#) [1077](#) [1080](#) [1090](#) [1095](#) [1096](#) [1097](#)  
[1098](#) [1109](#) [1126](#) [1127](#) [1128](#) [1162](#) [1173](#) [147](#)