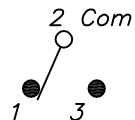
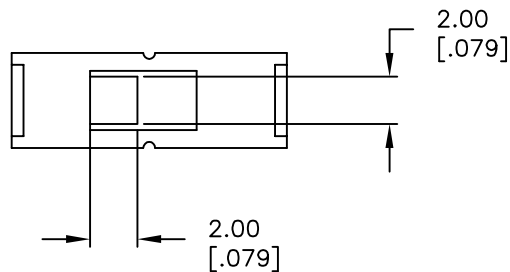


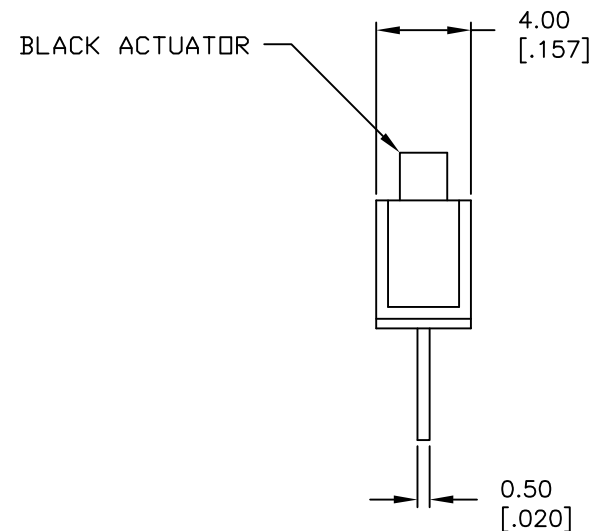
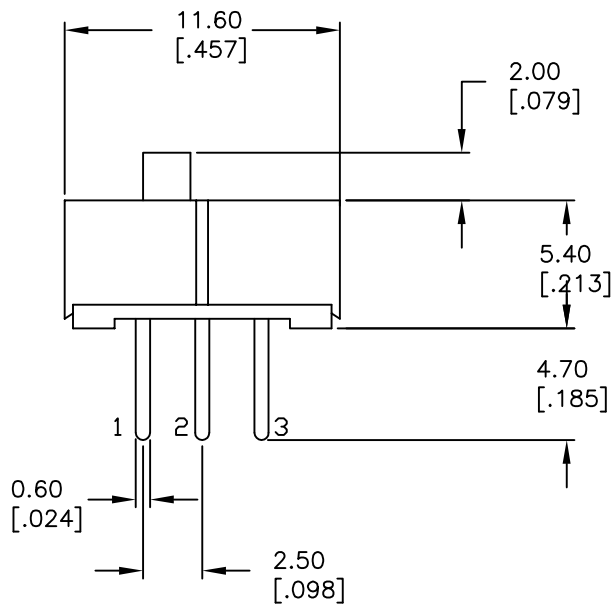
RECOMMENDED P.C.B. LAYOUT
NOT TO SCALE



CIRCUIT: SPDT
TIMING: NON SHORTING

NOTES:

1. ALL DIMENSIONS IN MM [INCH]
2. GENERAL TOLERANCE: X.X=±0.4
X.XX=±0.25
3. TERM. NOS. FOR REFERENCE ONLY.
4. ELECTRICAL RATING: 0.2A @30VDC
5. CONTACT MATERIAL: Copper Alloy W/Silver Plating
6. OPERATING FORCE: 250±100gf
7. TRAVEL: 2.5mm
8. CONTACT RESISTANCE: 50MILLI-OHMS Max.
9. DIELECTRIC STRENGTH: 500V RMS@ SEA LEVEL.
10. INSULATION RESISTANCE: 100Mega-OHMS Min.
11. OPERATING TEMP.: -20°C to 70°C



E-SWITCH®

TITLE					EG1218				
SCALE		DATE		DR		DWG		REV	
3:1		10/30/07		BF		P040040		C	

THE INFORMATION CONTAINED IN THIS DOCUMENT IS PROPRIETARY TO E-SWITCH AND IS NOT TO BE COPIED OR TRANSFERRED

C	17823	ADDED TERMINAL LENGTH DIM.	10/30/07	BF
B	11770	REVISED AND REDRAWN	10/22/01	CJB
REV.	ECN No.	DESCRIPTION	DATE	CHKD

X-ON Electronics

Largest Supplier of Electrical and Electronic Components

Click to view similar products for [Slide Switches](#) category:

Click to view products by [Gravitech](#) manufacturer:

Other Similar products are found below :

[6-1437581-1](#) [M43R](#) [MHS123K15D](#) [MHS133K](#) [MHSS1104A](#) [MMD](#) [GH49S010001](#) [MSS12A](#) [EPS1PC1](#) [1825074-1](#) [1825160-3](#) [1825167-2](#)
[1825289-7](#) [K232CB](#) [25139NLDB](#) [25449NAH](#) [SLB1240R45](#) [1825078-1](#) [1825080-4](#) [1825269-1](#) [1825270-2](#) [STS141RA04](#) [T2215BEN506](#)
[GH46P000001](#) [GH46W000001](#) [GH49P010001](#) [25339NA](#) [M42A](#) [TG36P000000](#) [TG36P000050](#) [AYZ0202AG](#) [47227LFE](#) [49331L](#) [50208L](#)
[L203091MS02Q](#) [4-1437581-7](#) [X2225CR-437W](#) [49329L](#) [1101M1S3ZB8E2](#) [1-1437581-1](#) [MSS2225G04](#) [TG39W000000](#) [1825075-1](#)
[MSS42G](#) [TG36WS80065](#) [T105S1CWZBE](#) [SLB124145](#) [SLB1280R5](#) [SLB1340R45](#) [25136NLDB](#)