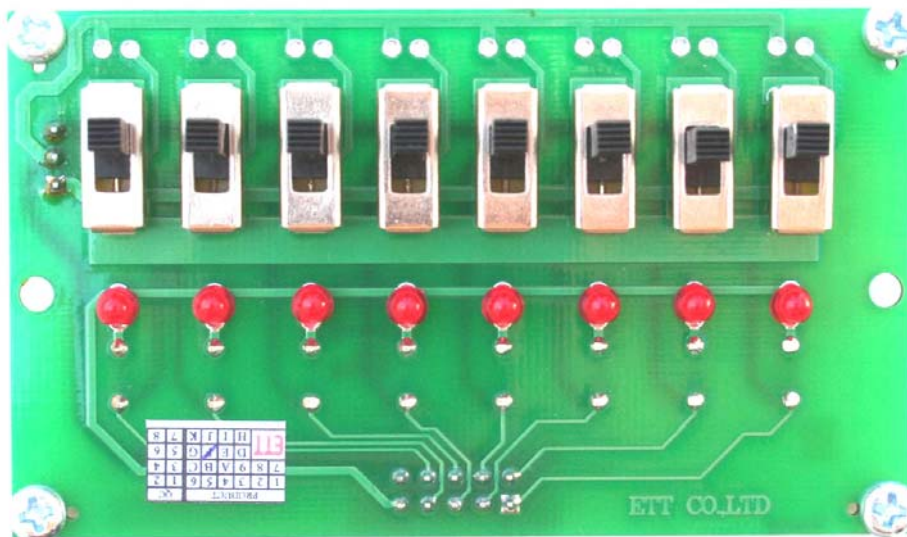


MR-TEST-10P-8SWLED™ 10PIN MRconnect® 8-SLIDE SWITCH
WITH LEDs User Manual

GRAVITECH.US



uResearch

GRAVITECH GROUP

Copyright © 2007 MicroResearch
GRAVITECH GROUP WWW.GRAVITECH.US

MR-TEST-10P-8SWLED™ 10PIN MRconnect® 8-SLIDE SWITCH WITH LEDs User Manual

Description

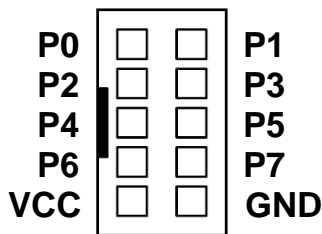
The MR-TEST-10P-8SWLED is an 8-CH SLIDE SWITCH with LEDs card. It designed to connect directly with 10PIN MRconnect®. It is a quick and easy way to test input port of the microcontroller. Also, it can be use for any input control purposes.

The board consists of eight individual slide switches. The long noses of the switches make them easy to switch ON and OFF. Each of the pin is pulled-high and become logic LOW once the switch has been activated. The indicator LEDs show the status of the switches. The switch can be easily configure as which position is active by changing the jumper. The module is power by VCC pin from the 10PIN MRconnect®. The module is compact in size 3.30 x 2.00 inches.

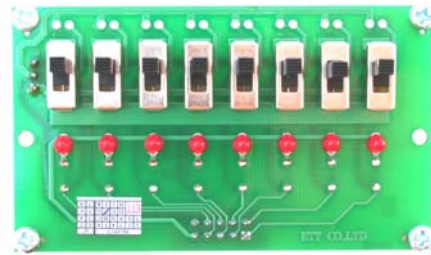
Features

- 8-CH slide switches with LEDs
- 10 PIN ready for MRconnect®
- Included 10 PIN ribbon cable

10PIN MRconnect®:



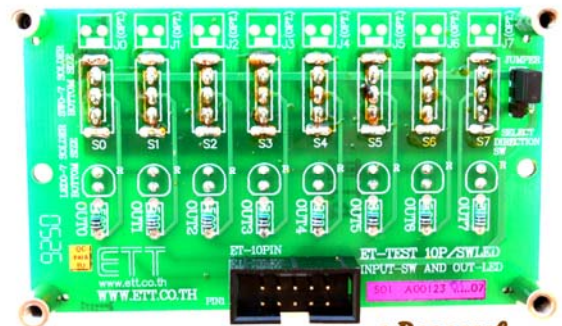
10 PIN MRconnect®



uResearch
© 2007 Copyright, All Rights Reserved



uResearch
© 2007 Copyright, All Rights Reserved



uResearch
© 2007 Copyright, All Rights Reserved

MR-TEST-10P-8SWLED™ 10PIN MRconnect® 8-SLIDE SWITCH WITH LEDs User Manual

Notes

Contact Us

We maintain a website where you can get information on our products, obtain literature and download support files. Visit us online at:

WWW.GRAVITECH.US

Use our online Forum or e-mail your technical support questions to support@gravitech.us. We try to respond to your questions the same day.

For sales questions or to place and order, direct your e-mails to sales@gravitech.us. Refer to our website for product pricing, shipping rates, payment instructions, and for other info we need to complete your order.

Disclaimer: MicroResearch reserves the right to modify its products or literature, or to discontinue any product at any time without prior notice. The customer is responsible for determining the suitability of any device for any application developed using MicroResearch components.

Copyright © 2007 MicroResearch
GRAVITECH GROUP WWW.GRAVITECH.US

X-ON Electronics

Largest Supplier of Electrical and Electronic Components

Click to view similar products for [Switch Development Tools](#) category:

Click to view products by [Gravitech](#) manufacturer:

Other Similar products are found below :

[T201-7C1](#) [GSK-10](#) [AT9704-065E](#) [AT9704-065FH](#) [AT9704-085K](#) [IS-DEV KIT-5](#) [IS-DEV KIT-5C](#) [IS-DEV KIT-5D](#) [IS-DEV KIT-6](#) [IS-DEV KIT-6C](#) [IS-DEV KIT-6D](#) [IS-DEV KIT-7D](#) [IS-DEV KIT-8](#) [IS-L0204-C](#) [GSK-947](#) [IS-L02F1-C](#) [CS-ICEBREAKER-07](#) [MR-TEST-10P-8PBSW](#) [T101-DEV1](#) [T201-DEV1](#) [IS-DEV KIT-1](#) [IS-DEV KIT-2](#)