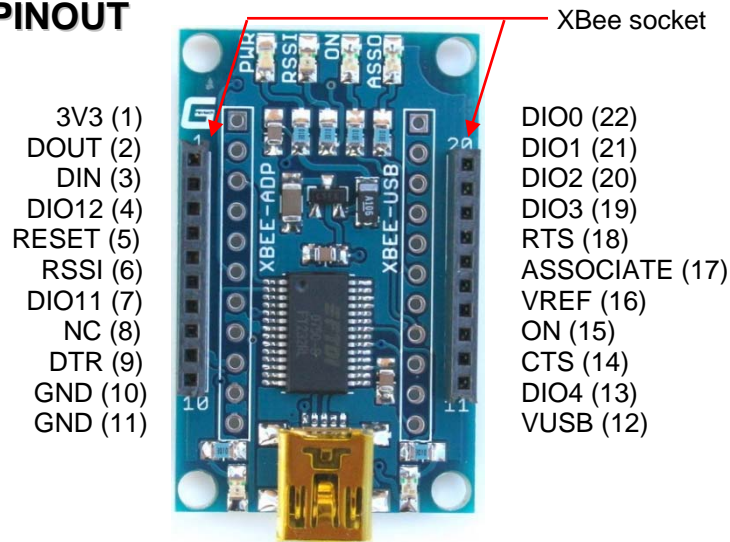
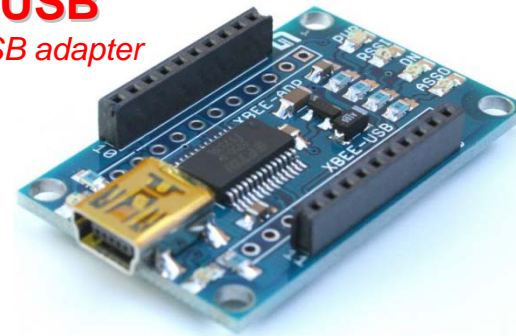


## PINOUT



\* See schematic for more detail.

## XBee-USB XBee to USB adapter

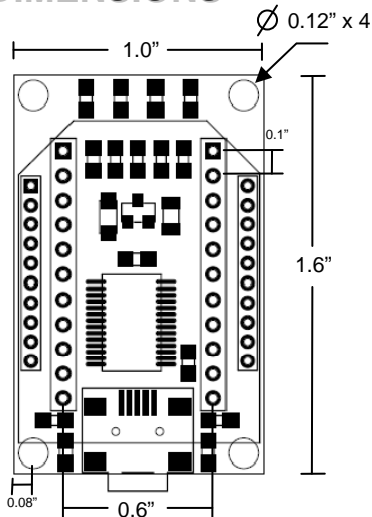


Copyright © 2008 Gravitech  
[WWW.GRAVITECH.US](http://WWW.GRAVITECH.US)



electronic experimental solutions

## DIMENSIONS

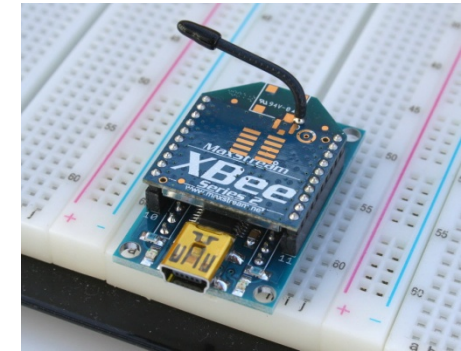


## FEATURES

- Works with all XBee modules including the Series 1, Series 2, and Series 2.5; standard and Pro.
- No external power needed.
- Support USB 1.0 and 2.0
- Low USB bandwidth consumption
- 256/128 bytes receive/transmit buffer
- 0.1" spacing (breadboard friendly)
- On-board 3.3V 250mA voltage regulator (can be use to power external devices)
- TX and RX communication LEDs
- PWR, RSSI, ON, and ASSOCIATE LEDs
- Accessibility to every Xbee pin
- Works with X-CTU software from Digi Int.
- Support Windows 98, 98SE, ME, 2000, Server 2003, XP, Vista. Mac OS8/9, OS-X and Linux 2.4 and greater.

## DESCRIPTION

It is the most easiest and reliable way to connect the Xbee module to a PC via USB port. It can be use as a communication point or a programmer for Xbee module using X-CTU software. There are six LEDs on this board to help you monitoring and quickly troubleshooting.



XBee, XBeePRO and X-CTU are Trademarks of Digi International Inc.

## X-ON Electronics

Largest Supplier of Electrical and Electronic Components

*Click to view similar products for [Sockets & Adapters](#) category:*

*Click to view products by [Gravitech](#) manufacturer:*

Other Similar products are found below :

[6508-0-00-01-00-00-33-0](#) [AC164348](#) [1262](#) [22827](#) [AC164353](#) [TDGL015](#) [SA247](#) [SM64TQ-ACTEL-1](#) [70-0036](#) [8.06.03](#) [DS91230+](#) [SMPA-ISP-ACTEL-3-KIT](#) [16017](#) [LFVDBGF](#) [KIT 70601-3](#) [SM132CQ-ACTEL](#) [R0E000010ACB20](#) [IPC0181](#) [IPC0175](#) [IPC0165](#) [AC164397](#) [conga-Thin MITX/eDP to DP Adapter](#) [SLG46621V-SKT](#) [SLG46722V-SKT](#) [ML-ADP-EVN](#) [TOOLSTICK990MPP](#) [110-83-320-41-605101](#) [110-83-632-41-605101](#) [110-83-640-41-605101](#) [110-83-628-41-605101](#) [116-83-306-41-001101](#) [PA0003](#) [PA0007](#) [PA0009](#) [PA0035](#) [PA0085](#) [PA0096](#) [IPC0079](#) [ATARD-DBGADPT](#) [80-000286](#) [ATSTK600-RC88](#) [ATSTK600-SC06](#) [ATSTK600-RC78](#) [SPC560PADPT64S](#) [AC164345](#) [AC164342](#) [AC164038](#) [14-351000-11-RC](#) [966927-1](#) [116-87-308-41-003101](#)