



Snap Action Joysticks

SERIES 04JT

Joystick with Tactile Feel

FEATURES

- Dynamically sealed against contamination to IP67 when properly mounted
- Available in above and below panel mount
- RoHS compliant
- High life (250,000 Operational Cycles)
- Short behind panel length (0.689")

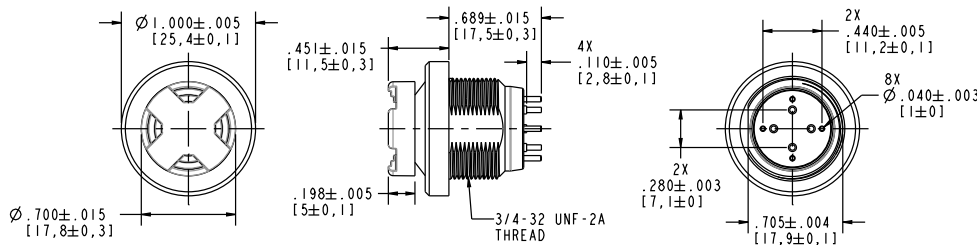


DESCRIPTION

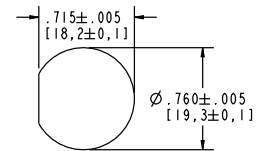
Series 04JT is a single pole, 4-way toggle switch with a tactile feel. 4-way contact is made in the opposite direction of travel.

DIMENSIONS in inches (and millimeters)

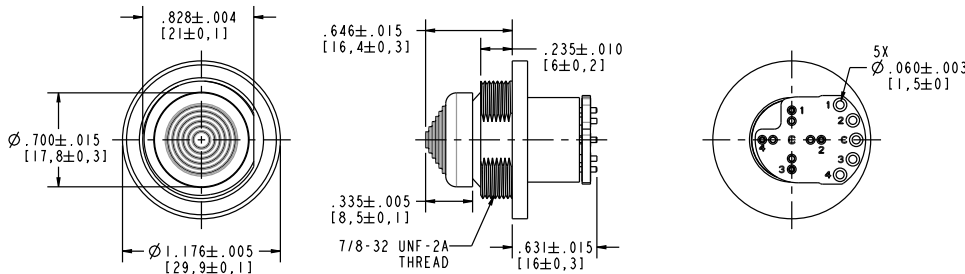
ABOVE PANEL, STADIUM CAP, PC TERMINAL STYLE



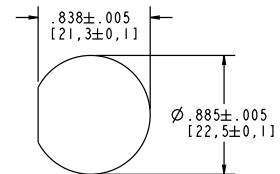
RECOMMENDED CUTOUT ABOVE PANEL STYLE



BEHIND PANEL, CONE CAP, PCB MOUNTED STYLE



RECOMMENDED CUTOUT BEHIND PANEL STYLE



ELECTRIC & MECHANICAL RATINGS

Lower Level Rating: 10mA (max) Resistive @ 5VDC
Contact Resistance: 50mΩ (max)
Operating Temperature: -55°C to +85°C
Operational Life: 250,000 cycles
Insulation Resistance: 10,000M ohms
Toggle Lever Travel: 12° from center (max)
Toggle Operating Force: 16 oz ± 6 oz initial
Toggle Pivot & Stop Strength: 25 lbs. (max)

Mechanical Shock: per MIL-STD-810, procedure I, method 516.4

Immersion: per MIL-PRF-8805, sealed to IP67

Moisture Resistance: per MIL-DTL-9419

Vibration: per MIL-DTL-9419G, Method 4.7.11

Terminal Strength: Over 30 lbs. for 1 minute, per MIL-DTL-9419G, Paragraph 4.7.6

Altitude: Up to 60,000 ft per MIL-DTL-9419G, Paragraph 4.7.16

Solderability: per MIL-DTL-9419G, Paragraph 4.7.19

MATERIALS & FINISHES

Cap: Thermoplastic

Bushing: Aluminum alloy (black chrome finish)

Contact Terminals: 1/2 hard brass (gold over silver over nickel plating)

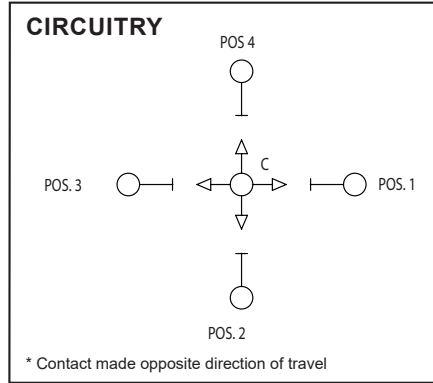
Hex Nut: Aluminum alloy (black chrome finish)

O-Ring: 50 durometer fluorosilicone

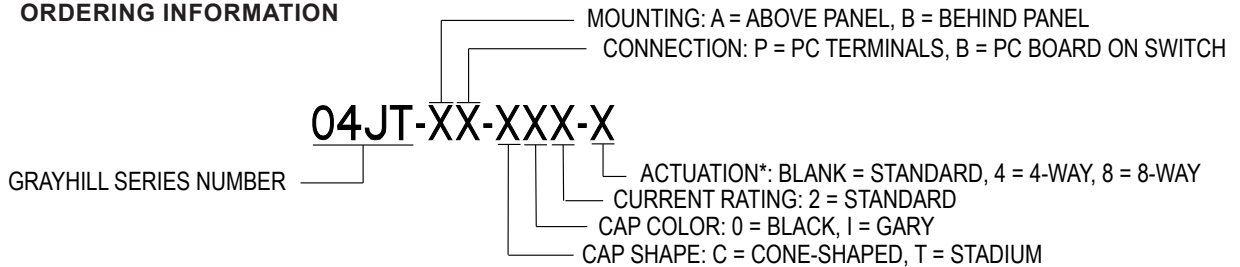
Spanner Nut: Stainless Steel (black chrome finish)



Snap Action Joysticks



ORDERING INFORMATION



*ACTUATION DESCRIPTIONS

STANDARD OPTION IS MAKE-BEFORE-BREAK WHEN ROLLING ACTUATOR BETWEEN ADJACENT POSTPOSITIONS.
 DIAGONAL ACTUATION FROM CENTERING DOES NOT ACTIVATE EITHER ADJACENT POSITION.

4-WAY OPTION IS BREAK-BEFORE-MAKE PREVENTING ADJACENT POSITIONS FROM BEING ACTIVE SIMULTANEOUSLY.
 DIAGONAL ACTUATION FROM CENTER DOES NOT ACTIVATE EITHER ADJACENT POSITION.

8-WAY OPTION ALLOWS ACTIVATION OF TWO ADJACENT POSITIONS DIRECTLY FROM CENTER WITH DIAGONALLY ACTUATION

X-ON Electronics

Largest Supplier of Electrical and Electronic Components

Click to view similar products for [Joysticks](#) category:

Click to view products by [Grayhill](#) manufacturer:

Other Similar products are found below :

[M11L0A1](#) [C10O0C1P](#) [JOY-THUMB](#) [S10L0A1M](#) [G3-A1AM151NNNN](#) [TH500P00D4](#) [C10O0C1PMJ0](#) [S10L061J](#) [60C22-M7-4-020S](#) [67A-DF-3C-060C](#) [60A00-8-050C](#) [60A00-4-050C](#) [60C22-M7-4-040S](#) [G3-0425](#) [S30L081F50](#) [3440SAT6476](#) [60A18-4-090C](#) [S30L081J](#)
[M11L001C](#) [M11L0X1P](#) [USBM31Q081RMJ4S](#) [USBC20O051JMJS](#) [TW08BLK12](#) [HRS202B1](#) [S30L0M1CSJBLK](#) [HF11R11](#) [HG-44MIS000-2654](#) [HG-44MIS000-U-2655](#) [4P182F1E55475](#) [TS4A1S00A](#) [BD140D01GR0000](#) [BD150SD4BL1200](#) [3140SAL6475](#) [TW01BLK11](#)
[TW01GRY1](#) [ZD4PA203](#) [HF44S10UMJ0](#) [TS3N2S00A](#) [TS1R1U00A](#) [TS1R1S09A](#) [TS1D2S00A](#) [TS1D1U02A](#) [HFX45S02](#) [HFX10S00](#)
[HF11P11](#) [4R28-2S1E-55-00](#) [BD150A01RE0000](#) [ZD4PA24](#) [ZD4PA22](#) [ZD4PA12](#)