

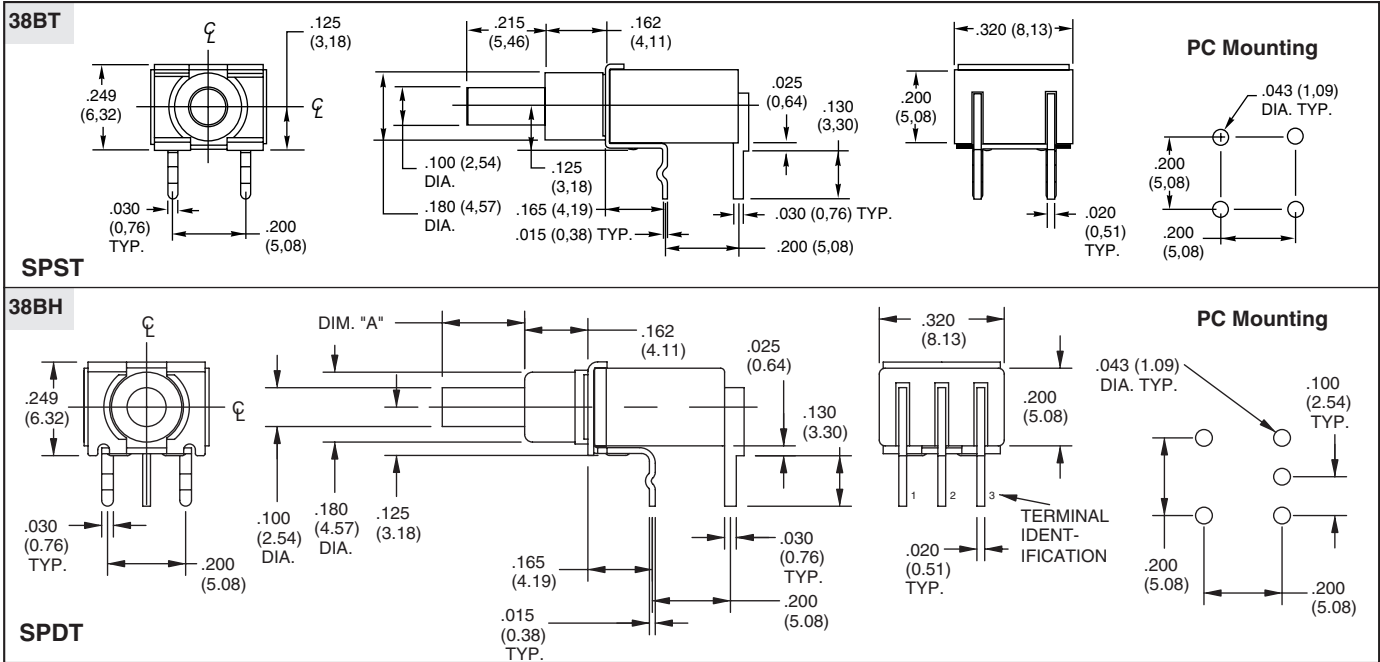
SERIES 38BT and 38BH Sub-Miniature Horizontal PC Mount

FEATURES

- Drop-In Replacement for Industry Standard
- Sealed Plunger Option
- Printed Circuit Board Mount
- SPST and SPDT, Momentary Contact



DIMENSIONS In inches (and millimeters)



Unless otherwise indicated, tolerances are $\pm .010$ (0,25)

SPECIFICATIONS

Rating Criteria

Operating Life: 80,000 make-and-break cycles at full load

Contact Rating (resistive load):

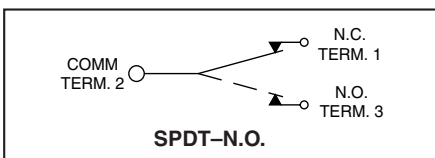
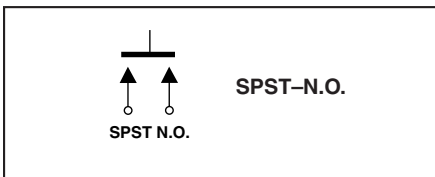
Gold Contacts: 0.4 VA maximum at 20 Vac or Vdc maximum

Silver Contacts: 1.0 Amp maximum at 120 Vac or 28 Vdc

Contact Resistance: Below 20 milliohms typical initial at 2-4 Vdc, 100 mA

Insulation Resistance: 1000 megaohms

CIRCUITRY



minimum

Voltage Breakdown: 1000 Vrms minimum at sea level

Operating Temperature: -30°C. to +85°C.

Solderability: Per MIL-STD-202F, Method 208D, or EIA RS-186E Method 9 (1 hour steam aging)

Materials and Finishes

ORDERING INFORMATION

Series: 38BT = SPST, Momentary, Thru Hole
38BH = SPDT, Momentary, Thru Hole

Dimension A: 0 = 0.020" 4 = 0.215"

Seal: S = O-Ring Seal, N = No Seal

Contact Plating Material:

- 1 = Solder Dip over Gold (Non-RoHS)
- 2 = Solder Dip over Silver (Non-RoHS)
- 3 = Gold - RoHS Compliant
- 4 = Silver - RoHS Compliant

Orientation: H = Horizontal to PCB

- Base and Cover:** Thermoplastic (UL 94V-0)
- Plunger:** Thermoplastic (UL 94V-0), (S versions include an internal o-ring seal)
- Terminals:** Copper alloy, gold or silver plate (as specified) over nickel plate
- Spring:** Plated Music Wire
- Contact System:** Copper alloy, gold or silver plate (as specified) over nickel plate
- Switch Support:** Brass, tin-plated

Available from your local Grayhill Distributor For prices and discounts, contact a local Sales Office, an authorized local distributor, or Grayhill.



X-ON Electronics

Largest Supplier of Electrical and Electronic Components

Click to view similar products for [Pushbutton Switches](#) category:

Click to view products by [Grayhill](#) manufacturer:

Other Similar products are found below :

[LW1L-M1C10V-A](#) [LW2L-A1C20M-GD](#) [LW2L-M1C20M-A](#) [60324L](#) [M7E-HRN2](#) [67021K512](#) [67081K512X](#) [701PB580](#) [719-5504-000](#)
[MDPSSGLFS](#) [810KSV30B](#) [MML21KA3ABK](#) [MML23KA3AC05K-001](#) [MML23KW3AA01W](#) [8418K2](#) [8646AB6X718UL](#) [8646ABUL](#)
[FSDWH](#) [9001KXRK](#) [9001T8BK](#) [9533CD4+U574+U4922](#) [1203MRA](#) [A22EM01S](#) [A595](#) [1202A6](#) [12037A2ULCSA](#) [1203A2UL](#) [ABD122N-](#)
[B](#) [1211390004](#) [ABN111-Y](#) [ABN400-R](#) [1211500044](#) [1211580012](#) [1212MRA](#) [1232A6NF](#) [RA3CSH6A](#) [1241.1183.7047](#) [1241.2511](#)
[1241.3428](#) [1223A2ULCSA](#) [1223MRA](#) [1232AX2119](#) [1241.1183.8000](#) [1241.1183.8029](#) [1241.2506](#) [1241.2606](#) [12MA6](#) [1301940184](#)
[RELBARF6X10\(PLASTIC\)](#) [13435AG](#)