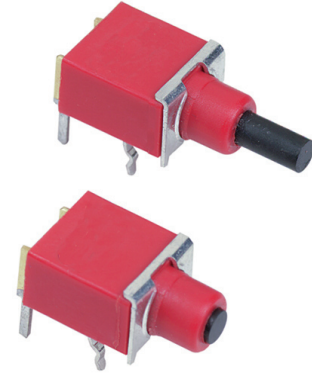


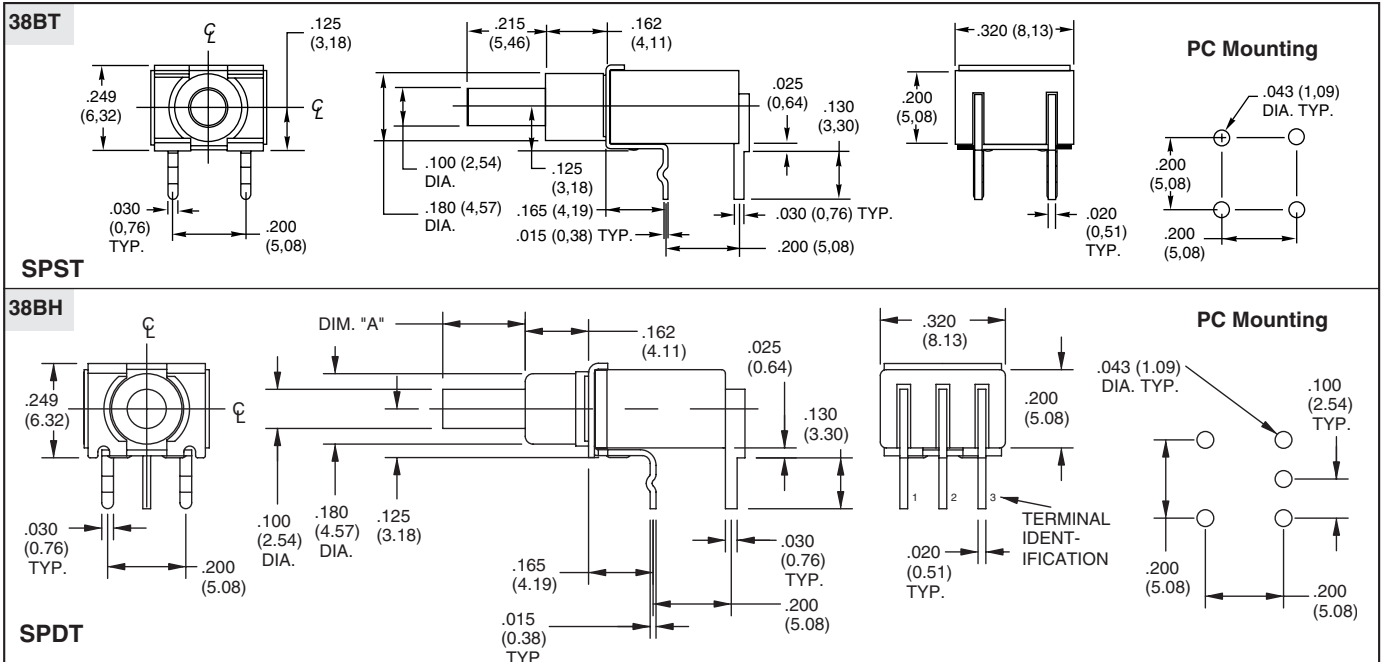
**SERIES 38BT and 38BH**  
Sub-Miniature Horizontal PC Mount

**FEATURES**

- Drop-In Replacement for Industry Standard
- Sealed Plunger Option
- Printed Circuit Board Mount
- SPST and SPDT, Momentary Contact



**DIMENSIONS** in inches (and millimeters)



Unless otherwise indicated, tolerances are ± .010 (0,25)

**SPECIFICATIONS**

**Rating Criteria**

**Operating Life:** 80,000 make-and-break cycles at full load

**Contact Rating (resistive load):**

*Gold Contacts:* 0.4 VA maximum at 20 Vac or Vdc maximum

*Silver Contacts:* 1.0 Amp maximum at 120 Vac or 28 Vdc

**Contact Resistance:** Below 20 milliohms typical initial at 2-4 Vdc, 100 mA

**Insulation Resistance:** 1000 megaohms min.

**Voltage Breakdown:** 1000 Vrms minimum at sea level

**Operating Temperature:** -30°C. to +85°C.

**Solderability:** Per MIL-STD-202F, Method 208D, or EIA RS-186E Method 9 (1 hour steam aging)

**Materials and Finishes**

**Base and Cover:** Thermoplastic (UL 94V-0)

**Plunger:** Thermoplastic (UL 94V-0), (S versions include an internal o-ring seal)

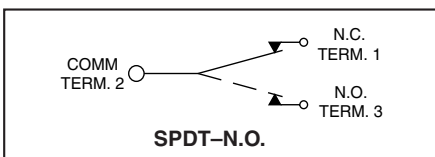
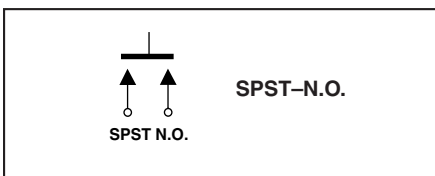
**Terminals:** Copper alloy, gold or silver plate (as specified) over nickel plate

**Spring:** Plated Music Wire

**Contact System:** Copper alloy, gold or silver plate (as specified) over nickel plate

**Switch Support:** Brass, tin-plated

**CIRCUITRY**



**ORDERING INFORMATION**

**38BX-4-H-3-N**

**Series:** 38BT = SPST, Momentary, Thru Hole  
38BH = SPDT, Momentary, Thru Hole

**Dimension A:** 0 = 0.020" 4 = 0.215"

**Seal:** S = O-Ring Seal, N = No Seal

**Contact Material:** 1 = Solder Dip over Gold  
2 = Solder Dip over Silver  
3 = Gold - RoHS Compliant  
4 = Silver - RoHS Compliant

**Orientation:** H = Horizontal to PCB

## X-ON Electronics

Largest Supplier of Electrical and Electronic Components

*Click to view similar products for [Pushbutton Switches](#) category:*

*Click to view products by [Grayhill](#) manufacturer:*

Other Similar products are found below :

[8940K2012](#) [LW1L-M1C10V-A](#) [LW1L-M1C70-A](#) [LW2L-A1C20M-GD](#) [LW2L-M1C20M-A](#) [60324L](#) [M22-D-R-GB0/K11](#) [M7E-HRN2](#)  
[67021K512](#) [67081K512X](#) [701PB580](#) [7199K101](#) [810K12910](#) [810KSV30B](#) [MML21EA2ADK](#) [MML21KA3ABK](#) [MML23KA3AC05K-001](#)  
[MML23KW3AA01W](#) [8418K2](#) [8442K3](#) [8450K1](#) [860K11911T01A](#) [861901](#) [861K11911T01A07](#) [861K13810T00A14](#) [861K13911](#)  
[8646AB6X718UL](#) [8646ABUL](#) [9001KXRK](#) [907AYY100](#) [PMHD155A1](#) [9533CD4+U574+U4922](#) [95-414.000](#) [99-450.837](#) [99-453.837](#)  
[PV3H2B0NN-341](#) [1203MRA](#) [A22NZBGANGA](#) [A22NZBNANGA](#) [A22NZMPATRA](#) [A2PMA1X03EC56](#) [A3A-5123-02](#) [A3A-7140](#) [A3A-7310](#) [A3A-7340](#) [A3U-TMW-A2C-5M](#) [A595](#) [12037A2ULCSA](#) [ABD122N-B](#) [1211390004](#)