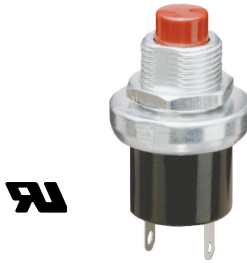


SERIES 10 SERIES 4000 SPST, 1 and 3 Amp

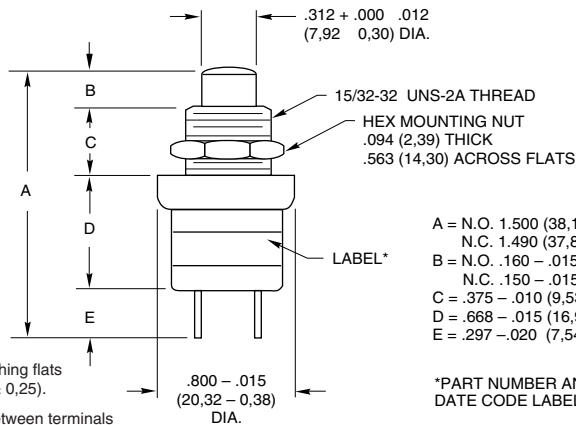
FEATURES

- Momentary or Momentary With Positive Feel
- UL Recognized at 3 Amps



DIMENSIONS in Inches (and millimeters)

4001(UL)
10-09 (UL)
10-100
4002 (UL)
10-10 (UL)
10-101

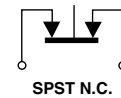
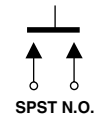


A = N.O. 1.500 (38,1) REF.
N.C. 1.490 (37,8) REF.
B = N.O. .160 - .015 (4,06 - 0,38)
N.C. .150 - .015 (3,81 - 0,38)
C = .375 - .010 (9,53 - 0,25)
D = .668 - .015 (16,97 - 0,38)
E = .297 - .020 (7,54 - 0,51)

*PART NUMBER AND E.I.A. DATE CODE LABEL

Action	Part No.	Circuitry	Oper. at Rated Load	Rating at 115 Vac Resistive	Rating at 220 Vac Resistive	Actuating Force
Momentary	4001 10-09	SPST-N.O.	100,000	1 Amp	1/2 Amp	22 oz. ± 8
Momentary	4002 10-10	SPST-N.C.	100,000	1 Amp	1/2 Amp	23 oz. ± 7
Pos. Feel	10-100	SPST-N.O.	100,000	1 Amp	1/2 Amp	35 oz. ± 8
Pos. Feel	10-101	SPST-N.C.	100,000	1 Amp	1/2 Amp	35 oz. ± 10
Underwriters Laboratory Recognized						
Momentary	4001 UL 10-09 UL	SPST-N.O.	6,000	3 Amp	—	22 oz. ± 8
Momentary	4002 UL 10-10 UL	SPST-N.C.	6,000	3 Amp	—	23 oz. ± 7

CIRCUITRY



ACCESSORIES



Decorative Mounting Nut
Part No. 07C1040-1



Button Guard
Part No. 10C1015-1

SPECIFICATIONS

Rating Criteria

Rated: See chart above

Contact Resistance: 25 milliohms or less on a new switch

Voltage Breakdown: 1,000 Vac between mutually insulated parts

Insulation Resistance: 1,000 megohms minimum

Additional Characteristics

Total Travel: Normally open .140 ± .032 (3,56 ± 0,81). Normally closed .110 + .010/ - .020 (2,79 + 0,25/ - 0,51).

Overtravel: Normally open .020 (0,51) min.

Pretravel: Normally closed .010 (0,25) min.

Operating Temperature: -40°C to +85°C

UL Recognition: See chart above for rating. UL file number is 35289.

Materials and Finishes

Mounting Nut: Brass, tin zinc

Mounting Bushing and Cover: Zinc, zinc trivalent chromate-plated

Button and Base: Thermoset plastic

Shorting Bar: Brass, silver-plated

Spring: Tinned music wire

Contact Terminals: Beryllium copper, silver-plated .0003" to .0005"

STANDARD OPTIONS

Epoxy sealed terminals are not available through distributors.

For terminals bent at 90°, contact Grayhill.

ORDERING INFORMATION

Description & Button Color	Part No.
SPST, N.O., Red	4001
SPST, N.O., Black	10-09
SPST, N.O., UL, Red	4001UL
SPST, N.O., UL, Black	10-09 UL
SPST, N.O., Positive Feel, Red	10-100
SPST, N.C., Positive Feel, Black	10-101
SPST, N.C., Red	10-10
SPST, N.C., Black	4002
SPST, N.C., UL, Red	10-10 UL
SPST, N.C., UL, Black	4002 UL
Accessory Nut	07C1040-1
Accessory Button Guard	10C1015-1

X-ON Electronics

Largest Supplier of Electrical and Electronic Components

Click to view similar products for [Pushbutton Switches](#) category:

Click to view products by [Grayhill](#) manufacturer:

Other Similar products are found below :

[8940K2012](#) [LW1L-M1C10V-A](#) [LW1L-M1C70-A](#) [LW2L-A1C20M-GD](#) [LW2L-M1C20M-A](#) [60324L](#) [M22-D-R-GB0/K11](#) [M7E-HRN2](#)
[67021K512](#) [67081K512X](#) [701PB580](#) [7199K101](#) [810K12910](#) [810KSV30B](#) [MML21EA2ADK](#) [MML21KA3ABK](#) [MML23KA3AC05K-001](#)
[MML23KW3AA01W](#) [8418K2](#) [8442K3](#) [8450K1](#) [860K11911T01A](#) [861901](#) [861K11911T01A07](#) [861K13810T00A14](#) [861K13911](#)
[8646AB6X718UL](#) [8646ABUL](#) [9001KXRK](#) [907AYY100](#) [PMHD155A1](#) [9533CD4+U574+U4922](#) [95-414.000](#) [99-450.837](#) [99-453.837](#)
[PV3H2B0NN-341](#) [1203MRA](#) [A22NZBGANGA](#) [A22NZBNANGA](#) [A22NZMPATRA](#) [A2PMA1X03EC56](#) [A3A-5123-02](#) [A3A-7140](#) [A3A-7310](#) [A3A-7340](#) [A3U-TMW-A2C-5M](#) [A595](#) [12037A2ULCSA](#) [ABD122N-B](#) [1211390004](#)