



Optical Encoders

**SERIES 62T**  
**Thumbwheel with Pushbutton**

**FEATURES**

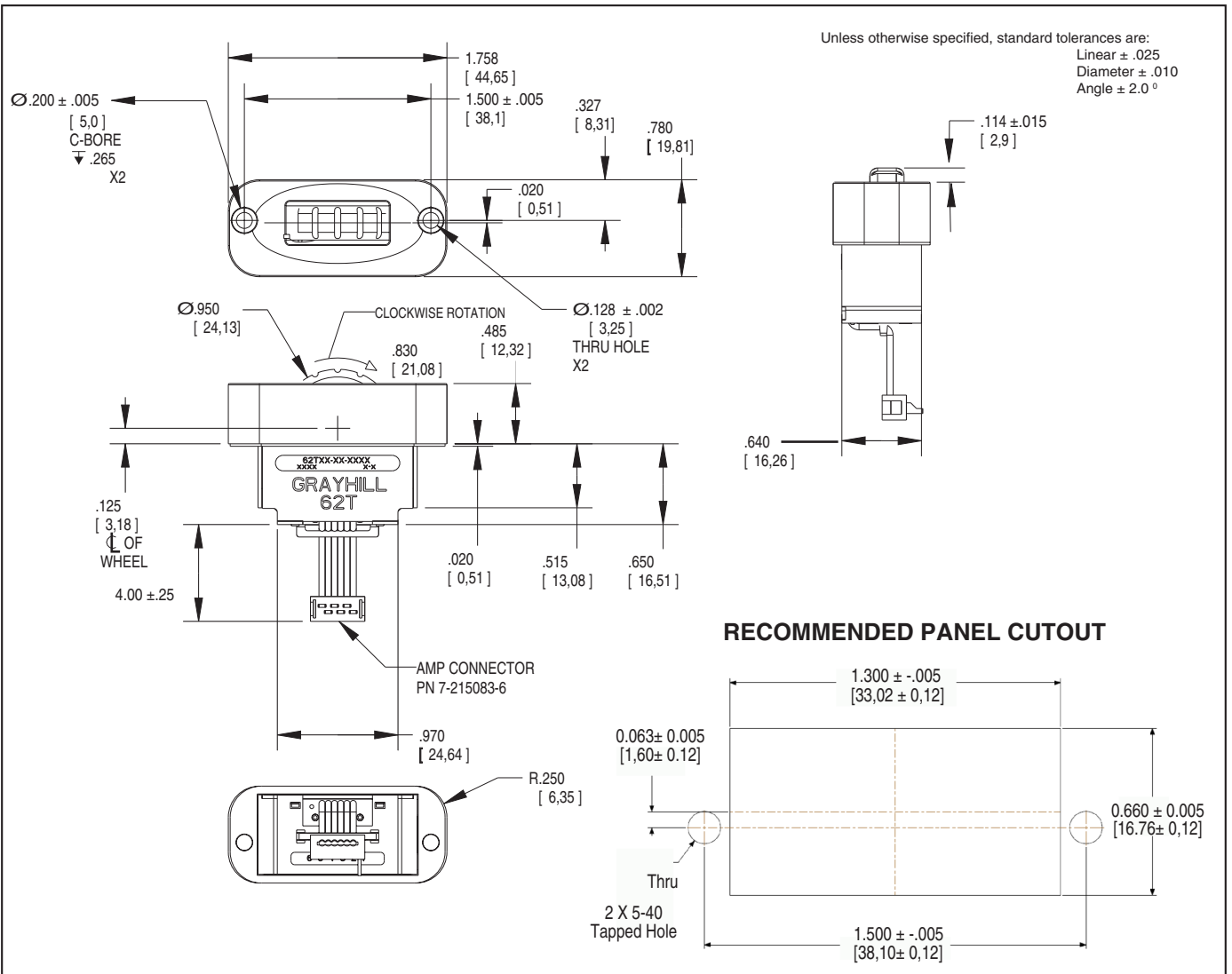
- Scroll and select functions
- Sealed against dust and particles
- Custom bezels that will blend with HMI grips and control panels
- Optional integrated pushbutton with over three million actuations
- MIL-STD-202 and MIL-STD-810F Compliant
- Standard panel seal
- Choice of cable length and termination

**APPLICATIONS**

- Scroll & select equipment in industrial and non-automotive transportation applications
- Display selectors
- Hand-grip joysticks

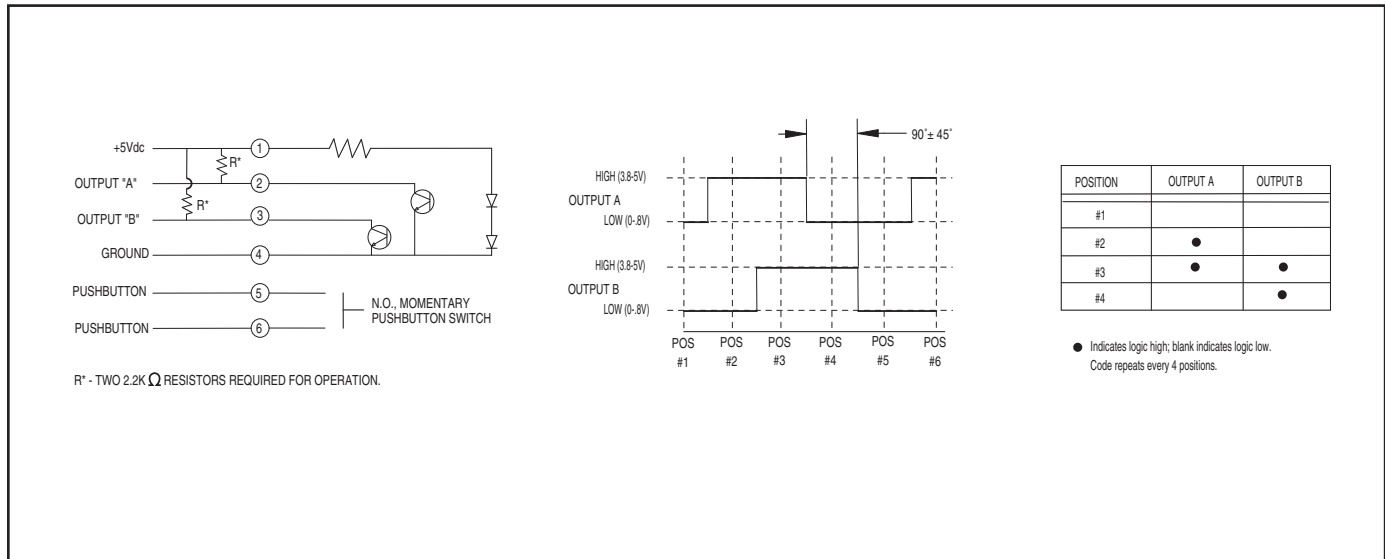


**DIMENSIONS** in inches (and millimeters)



Optical and Mechanical Encoders

## WAVEFORM AND TRUTH TABLE



## SPECIFICATIONS

### Environmental Specifications

MIL-STD-810F Qualified

**Operating Temperature Range:** -40° C to 85° C

**Storage Temperature Range:** -55° C to 100° C

**Humidity:** 240 hours at 95% humidity at 30° C

**Mechanical Vibration:** Harmonic motion with amplitude of 15g, within a varied frequency of 10 to 2000 Hz

### Mechanical Shock:

Test 1: 100g for 6 ms half-sine wave with a velocity change of 12.3 ft/sec

Test 2: 100g for 6 ms sawtooth wave with a velocity change of 9.7 ft/sec

### Pushbutton Electrical and Mechanical Specifications

**Rating:** 10mA @ 5 Vdc

**Contact Resistance:** <10ohms

**Life:** 3 million actuations minimum

**Contact Bounce:** <4 ms make, <10ms break

**Actuation Force:** N – None, 7–700g, 10 – 1000g.

**Thumbwheel Travel:** .060 ± .015 in

### Rotary Electrical and Mechanical Specifications

**Operating Voltage:** 5.00±0.25 Vdc

**Supply Current:** 25mA Max.

**Output:** Open collector phototransistor, external pull up resistors are required

**Output Code:** Two-bit quadrature, channel A leads channel B by 90° electrically during clockwise rotation of the thumbwheel

Logic high shall be no less than 3.8 Vdc

Logic low shall be no greater than 0.8 Vdc

**Power Consumption:** 125 mW Max.

**Mechanical Life:** 1,000,000 cycles of operation for Low and Non-Rotational Torque.

500,000 cycles of operation for Medium

Rotational Torque. 1 cycle is a rotation

through all positions and a full return.

### Average Rotational Torque:

M: 2.2±.75 in-oz, L: 1.2±0.5 in-oz, N: <0.50

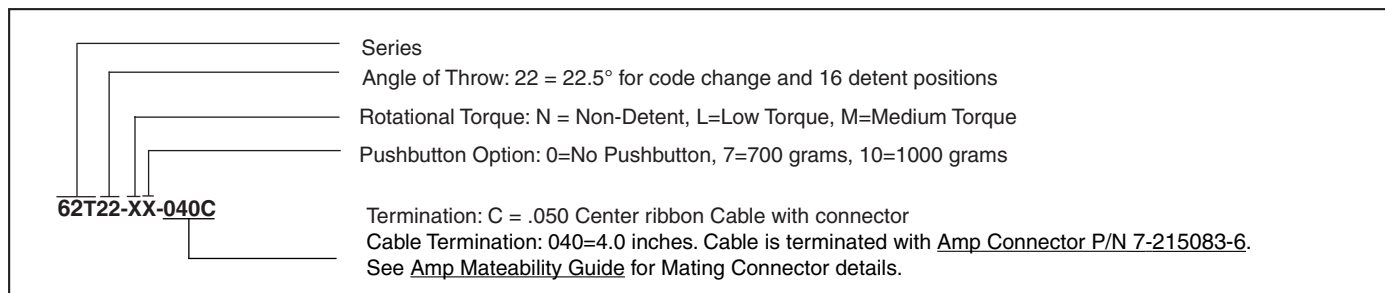
in-oz. Initially torque shall be within 75% of initial value throughout life.

### Materials and Finishes

**Face Plate:** Plastic

**Wheel:** Plastic

Optical and Mechanical Encoders



Available from your local Grayhill Component Distributor. For pricing and discounts, contact a local Sales Office, an authorized local Distributor, or Grayhill.

## X-ON Electronics

Largest Supplier of Electrical and Electronic Components

*Click to view similar products for [Encoders](#) category:*

*Click to view products by [Grayhill](#) manufacturer:*

Other Similar products are found below :

[6-1393048-0](#) [6-1393048-5](#) [62AG22-H5-P](#) [62B22-LP-030C](#) [63K25](#) [63K32](#) [63KS100](#) [63KS64](#) [63R100](#) [63R50-020](#) [63RS256-060](#) [700-09-36](#)  
[RE12D300-201-1](#) [1393047-3](#) [2-1393047-2](#) [T101-5C2-111-M1](#) [T101-5C3-111-M1](#) [T101-5C4-111-M1](#) [385001M0439](#) [385001M0216](#)  
[V23401H1409B101](#) [V23401T8002B802](#) [V23401U6019B609](#) [E69-1](#) [E69DF10](#) [E69-FCA](#) [62B11-LP-100S](#) [62B11-LPP-040C](#) [62N11-P](#)  
[62S22-H9-120S](#) [62S30-L0-200C](#) [62V15-02-080S](#) [63K64](#) [63KS100-040](#) [63R64-050](#) [63RS64](#) [700-16-16](#) [V23401D3002B301](#) [3-1393048-1](#)  
[63KS128](#) [63KS256](#) [1-1879391-5](#) [GH65C11-N-SO](#) [62S15-M0-P](#) [1393047-1](#) [E69-FCA02](#) [E69-FCA04](#) [E69-DF20](#) [E69-DF2](#) [63R50](#)