

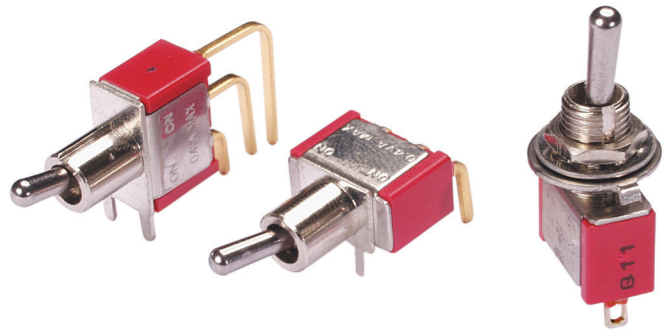


## Series 34A: Miniature Toggle Switches

### SERIES 34A Miniature Toggle Switches

#### FEATURES

- Save Space and Weight
- SPDT, DPDT, 3PDT, and 4DPT Circuitry
- Choice of Actuators, Bushings and Terminations
- UL Recognized

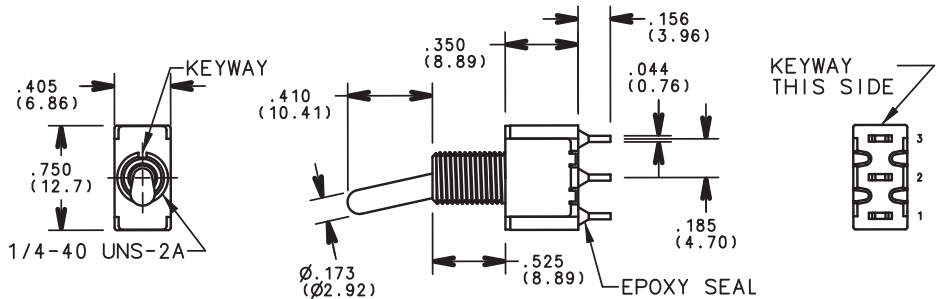


#### MODELS in inches (and millimeters)

##### SPDT

MODEL NO.	SWITCH POSITION		
SP1	ON	NONE	ON
SP2	ON	NONE	(ON)
SP3	ON	OFF	ON
SP4	(ON)	OFF	(ON)
SP5	ON	OFF	(ON)
TERM. COMM.	2-3	OPEN	2-1

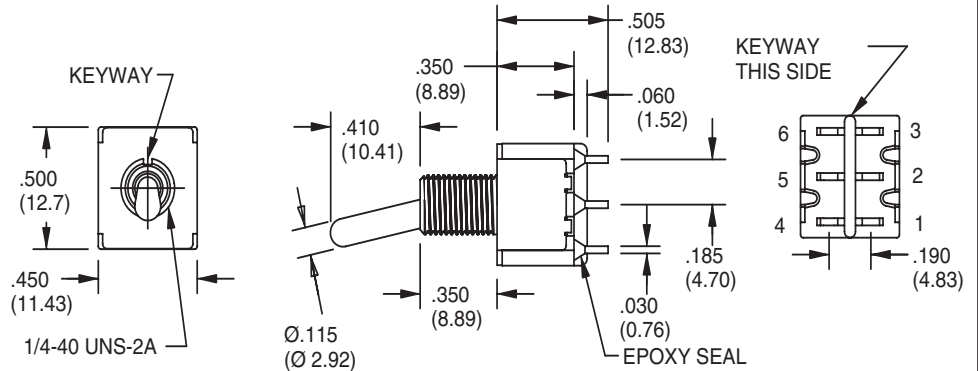
( )=MOMENTARY



##### DPDT

MODEL NO.	SWITCH POSITION		
DP1	ON	NONE	ON
DP2	ON	NONE	(ON)
DP3	ON	OFF	ON
DP4	(ON)	OFF	(ON)
DP5	ON	OFF	(ON)
TERM. COMM.	2-3, 5-6	OPEN	2-1, 5-4

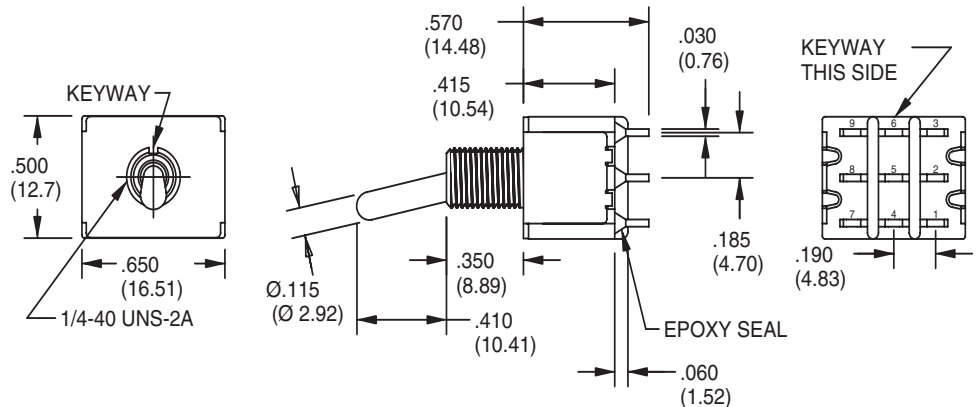
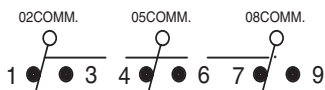
( )=MOMENTARY



##### 3PDT

MODEL NO.	SWITCH POSITION		
3P1	ON	NONE	ON
3P2	ON	NONE	(ON)
3P3	ON	OFF	ON
3P4	(ON)	OFF	(ON)
3P5	ON	OFF	(ON)
TERM. COMM.	2-3,5-6, 8-9	OPEN	2-1,5-4, 8-7

( )=MOMENTARY



**MODELS** in inches (and millimeters)

**4PDT**

MODEL NO.	SWITCH POSITION		
	ON	NONE	ON
4P1	ON	NONE	ON
4P2	ON	NONE	(ON)
4P3	ON	OFF	ON
4P4	(ON)	OFF	(ON)
4P5	ON	OFF	(ON)
TERM. COMM.	2-3,5-6 8-9,11-12	OPEN	2-1,5-4 8-7,11-10

( )=MOMENTARY

02COMM. 05COMM. 08COMM. 011COMM.

1 3 4 6 7 9 10 12

SCHEMATIC

SCALE:1.5:1

Dimensions: .500 (12.7), .850 (21.59), .570 (14.48), .030 (0.76), .415 (10.54), .185 (4.70), .350 (8.89), .410 (10.41), .190 (4.83), .060 (1.52), Ø.115 (Ø 2.92), .134 (3.40), .115 (2.92), .107 (2.71), .200 (5.08), .131 (3.32), .840 (21.32), .240 (6.09), .487 (12.37), .687 (17.45), .465 (11.80), .200 (5.08), .450 (11.43), .15/32-32NS, .645 (16.38), .840 (21.34), Ø.129 (Ø3.28), .640 (16.26), .315 (8.00), .579 (14.73) LOCKED, .315 (8.00) UNLOCKED.

**ACTUATOR OPTIONS** in inches (and millimeters)

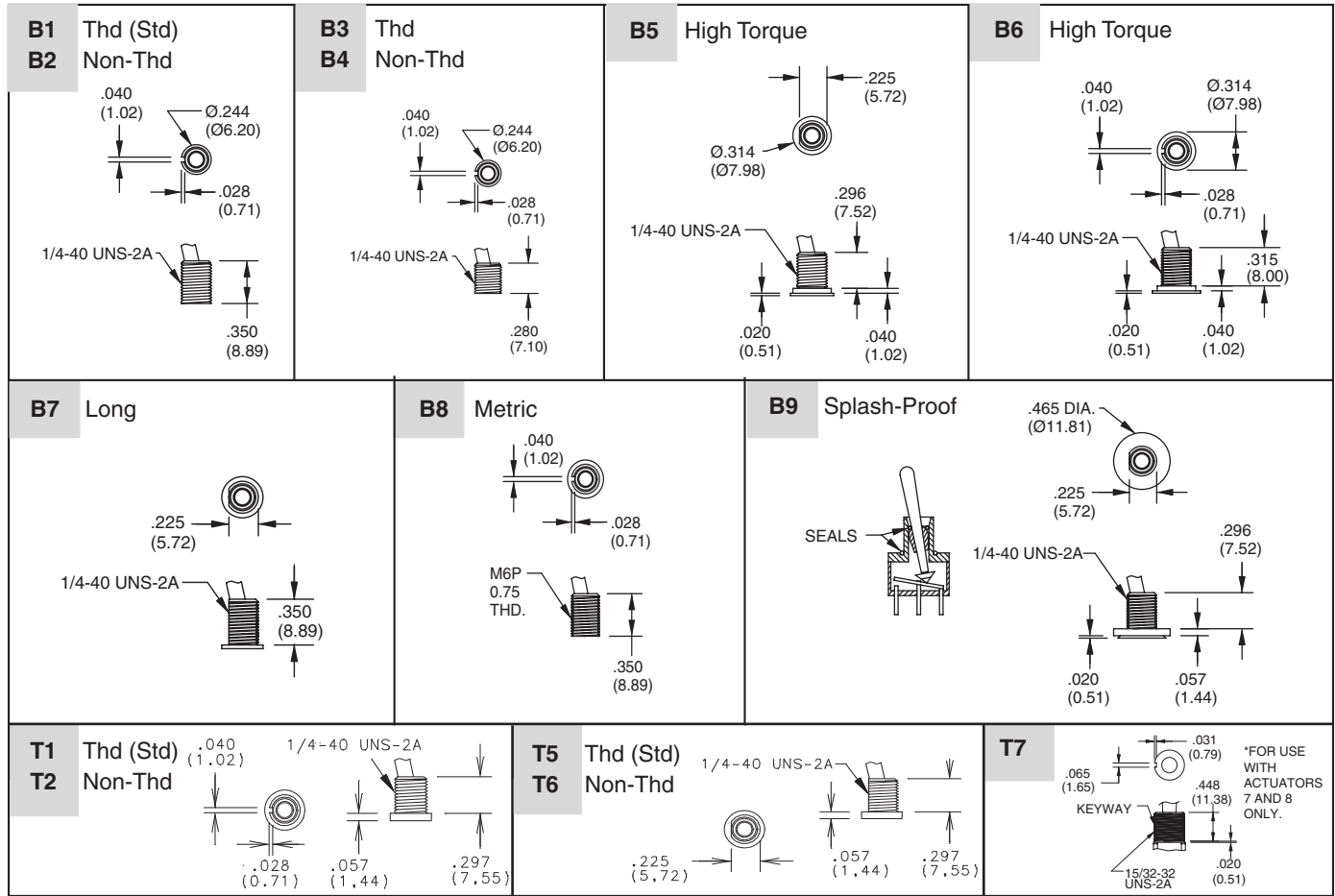
<p><b>1</b> Std</p> <p>.115 DIA. (Ø3.01) .410 (10.41)</p>	<p><b>2</b></p> <p>.107 DIA. (Ø2.71) .200 (5.08)</p>	<p><b>3</b></p> <p>.134 DIA. (Ø3.40) .550 (13.97)</p>	<p><b>4</b></p> <p>.131 DIA. (Ø3.32) .640 (16.26)</p>	<p><b>5</b></p> <p>.131 (3.32) .840 (21.32)</p>
<p><b>6</b></p> <p>.200 DIA. (Ø5.08) .450 (11.43)</p> <p>Use with Bushing Options T1, T2, T5 and T6 only.</p>	<p><b>7</b></p> <p>.240 DIA. (Ø6.09) .487 (12.37) .465 (11.80)</p> <p>KEYWAY 15/32-32NS</p> <p>Use T7 Bushing Option only.</p>	<p><b>8</b></p> <p>.240 DIA. (Ø6.09) .687 (17.45) .465 (11.80)</p> <p>KEYWAY 15/32-32NS</p> <p>Use T7 Bushing Option only.</p>	<p><b>9</b> Nylon Black</p> <p>Ø.129 (Ø3.28) .645 (16.38) .840 (21.34)</p>	<p><b>L</b> THD. (STD.) <b>N</b> NON-THD</p> <p>L THD.(STD.) N NON-THD.</p> <p>Ø.214 (Ø5.44) .579 (14.73) LOCKED .315 (8.00) .640 (16.26) UNLOCKED L-Style</p> <p>Use B1 &amp; B2 bushing option only. Bushing dimension is .315</p>

Actuators 1-5 shown with standard B1 bushing. Add .070 (1.78) for B3, subtract .020 (0.51) for B6 bushing.

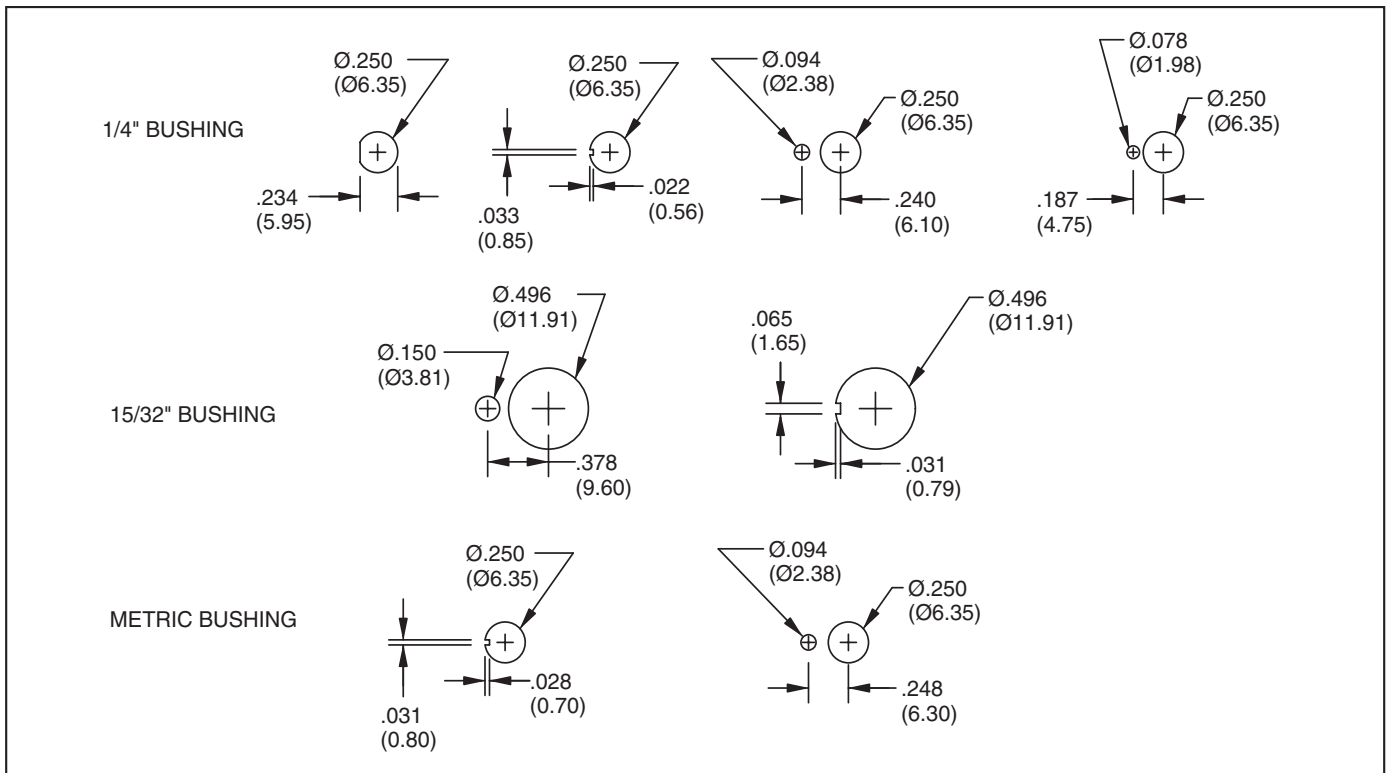


## Series 34A: Miniature Toggle Switches

### BUSHING OPTIONS in inches (and millimeters)



### PANEL MOUNTING in inches (and millimeters)



**TERMINATION OPTIONS** in inches (and millimeters)

M1	M2	M3	WX										
<p><b>Solder Lug (Std)</b></p>	<p><b>P.C. Mount</b></p>	<p><b>P.C. Mount, Quick Connect</b></p>	<p><b>WIRE WRAP</b></p> <table border="1"> <thead> <tr> <th>OPTION CODE</th> <th>DIM. "A"</th> </tr> </thead> <tbody> <tr> <td>W1</td> <td>.750(19.05)</td> </tr> <tr> <td>W2</td> <td>.964(24.48)</td> </tr> <tr> <td>W3</td> <td>.425(10.80)</td> </tr> <tr> <td>W4</td> <td>1.062(26.97)</td> </tr> </tbody> </table>	OPTION CODE	DIM. "A"	W1	.750(19.05)	W2	.964(24.48)	W3	.425(10.80)	W4	1.062(26.97)
OPTION CODE	DIM. "A"												
W1	.750(19.05)												
W2	.964(24.48)												
W3	.425(10.80)												
W4	1.062(26.97)												
<p><b>M6 Right Angle P.C. Mount, Horizontal Actuation</b></p> <p><b>SPDT</b></p> <p><b>DPDT</b></p>	<p><b>M7 Right Angle P.C. Mount, Vertical Actuation</b></p> <p><b>SPDT</b></p> <p><b>DPDT</b></p>												

Toggle Switches

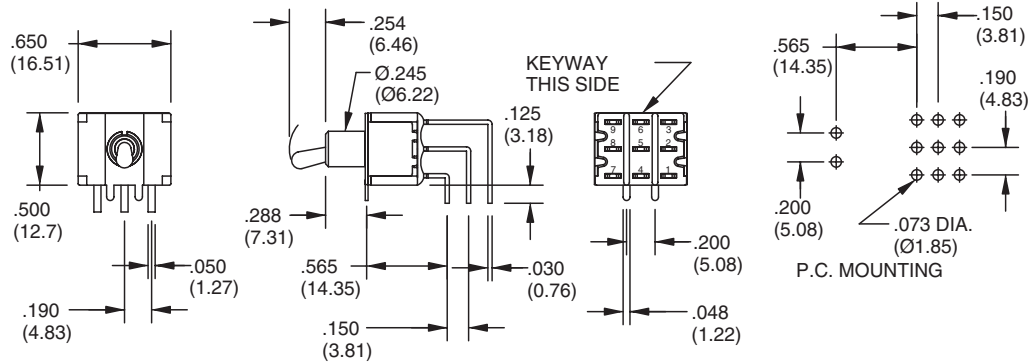


## Series 34A: Miniature Toggle Switches

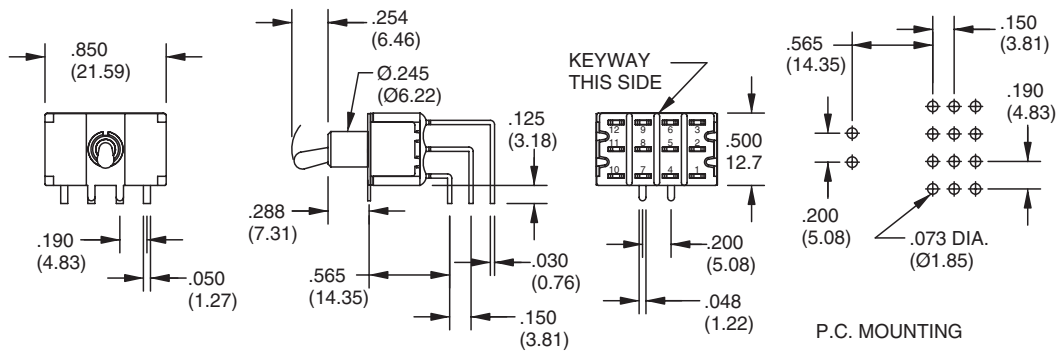
### TERMINATION OPTIONS in inches (and millimeters)

#### M7 Right Angle P.C. Mount, Vertical Actuation

3PDT

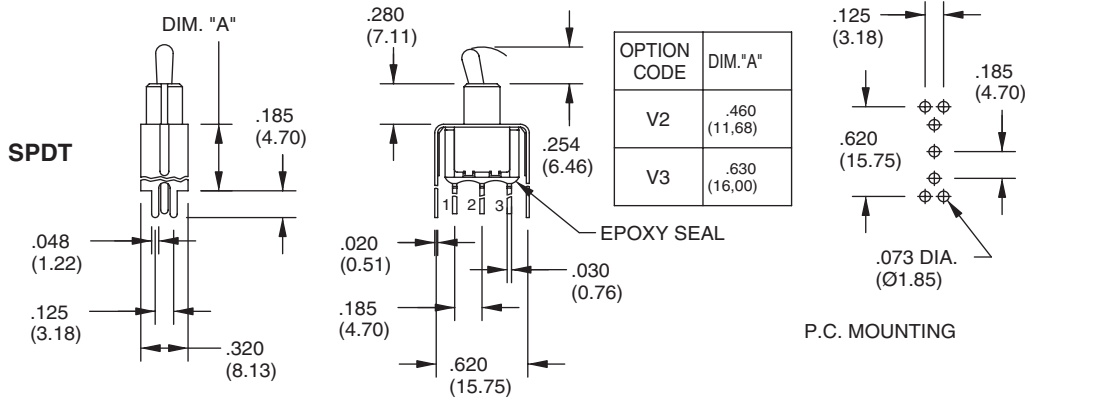


4PDT

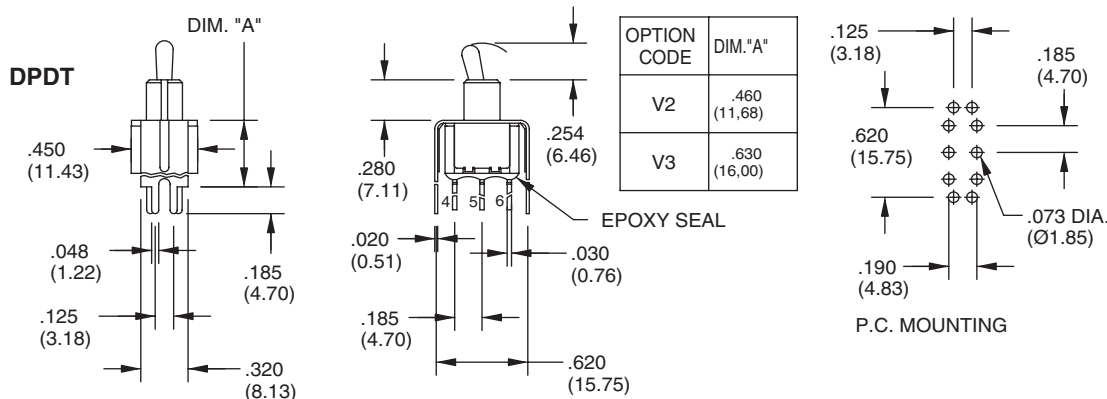


#### V2-V3 Vertical Bracket P.C. Mount

SPDT



DPDT



## SPECIFICATIONS

### RATINGS

**Contact Rating:** Q option - 5A with resistive load @ 125VAC or 28 VDC; 2A with resistive load @ 250 VAC. R option-0.4 VA max @ 20 Vmax (AC or DC)

**Electrical Life:** 40,000 make-and-break cycles at full load

**Contact Resistance:** 10 milliohms max. initial @ 2-4 VDC, 100 mA for both gold & silver contacts

**Insulation Resistance:** 1,000 megaohms minimum

**Dielectric Strength:** 1,000 V RMS @ sea level

**Operating Temperature:** -30°C to 85°C

**UL Recognition:** File number is E35289

### MATERIALS

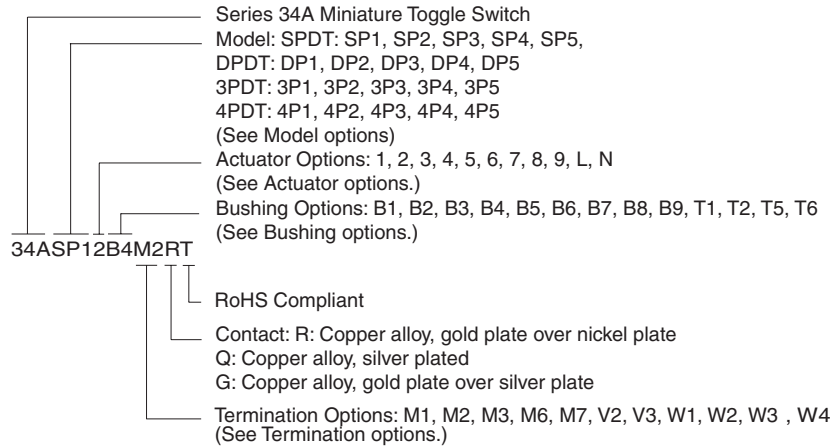
**Case:** Diallyl phthalate (DAP) (UL94V-0)

**Toggle Handle:** Brass, chrome-plated

**Bushing:** Brass, nickle-plated

**Housing:** Stainless steel

## ORDERING INFORMATION



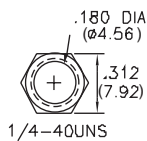
Available from your local Grayhill Component Distributor.

For prices and discounts, contact a local Sales Office, an authorized local Distributor or Grayhill.

## HARDWARE in inches (and millimeters)

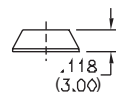
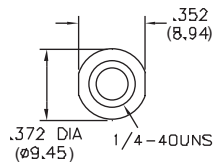
### NUTS

Series 34A (Std)



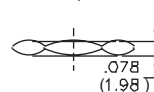
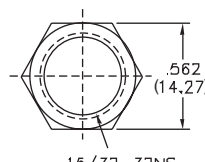
HDW2

Dress Nut



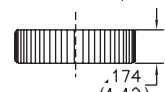
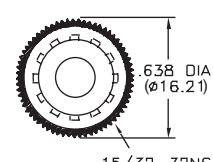
HDW3

For Actuator Options 7, 8 (Std)



HDW4

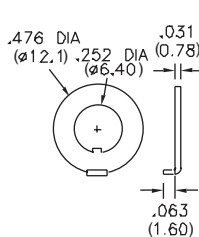
Knurled Nut (Sealed)



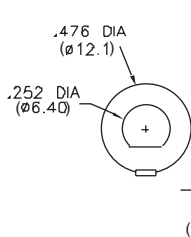
HDW5

### LOCKING RINGS

Series 34A (Std)

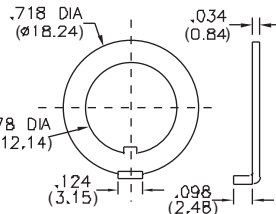


HDW15



HDW16

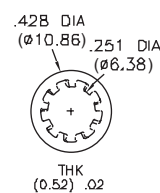
For Actuator Options 7, 8



HDW17

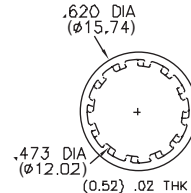
### LOCK WASHERS

Series 34A (Std)



HDW11

For Actuator Options 7, 8



HDW12

## X-ON Electronics

Largest Supplier of Electrical and Electronic Components

*Click to view similar products for [Switch Fixings](#) category:*

*Click to view products by [Grayhill](#) manufacturer:*

Other Similar products are found below :

[893102000](#) [00-5150](#) [LZZ1A](#) [0098.9234](#) [61-9451.0](#) [M2PA-5011](#) [630155](#) [635401](#) [6PA113](#) [6PA147-E6](#) [6PA148-E6](#) [6PA32](#) [6PA9](#) [700109](#)  
[700303A56](#) [700C1GRY](#) [700C2GRN](#) [704-6001](#) [704.960.9](#) [704.965.2](#) [704.965.6](#) [704.966.0](#) [7089-3](#) [710082-B11](#) [71M1048](#) [757200264](#)  
[764300000](#) [MHU35](#) [MHU37](#) [807039-1](#) [825.003.011](#) [825.005.011](#) [825.053.011](#) [825.055.011](#) [826.000.071](#) [827.020.011](#) [827.400.021](#)  
[835.900.023](#) [MML52C10C](#) [MML52E10C](#) [MML92HGH](#) [MML93K](#) [84211M02CNNS](#) [84212M02CNNS](#) [84217A8.0LNOS](#) [842.500.011](#)  
[843.000.011](#) [843187-000](#) [843487-000](#) [84-901](#)