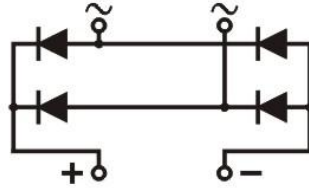


#### Feature

- International standard package
- Low forward voltage drop
- Isolation voltage 2500V~



#### Application

- DC power suppliers for apparatus device
- Input rectifying power supply for PWM converters
- Inverter welders



#### Maximum value

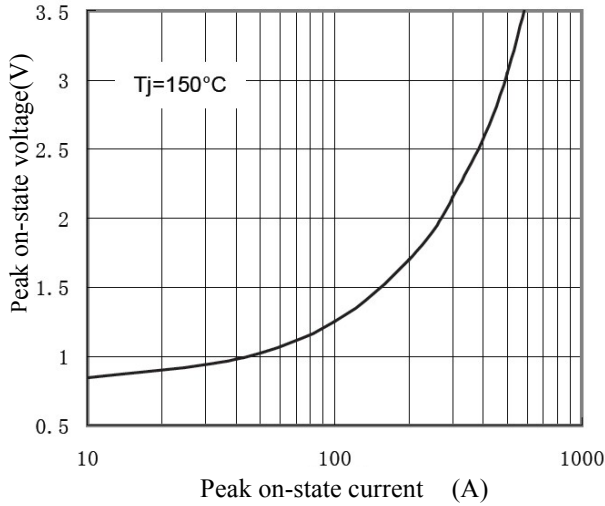
Symbol	Parameter	Rating							Unit
		MDQ100-06F	MDQ100-08F	MDQ100-10F	MDQ100-12F	MDQ100-14F	MDQ100-16F	MDQ100-18F	
V <sub>RRM</sub>	Peak reverse repetitive voltage	600	800	1000	1200	1400	1600	1800	V
V <sub>RSM</sub>	Peak reverse non-repetitive voltage	700	900	1100	1300	1500	1700	1900	V

Symbol	Parameter	Test condition	Rating	Unit
I <sub>o</sub>	Output DC current	Three-phase whole wave rectifying circuit T <sub>c</sub> :100°C	100	A
I <sub>FSM</sub>	Forward surge current	t=10ms,50HZ,sin,T <sub>jm</sub>	1500	A
I <sup>2</sup> t	I <sup>2</sup> t value	V <sub>R</sub> = 0.6V <sub>RRM</sub> , T <sub>jm</sub>	11400	A <sup>2</sup> S
V <sub>ISO</sub>	Isolation voltage	AC one min	2500	V
T <sub>j</sub>	Operating junction temperature		-40 to +150	°C
T <sub>jm</sub>	Rated junction temperature		150	°C
T <sub>stg</sub>	Storage temperature		-40 to +125	°C
M <sub>d</sub>	Mounting torque (copper plate) M6		4	N·m
	Mounting torque (terminal) M6		4	N·m
W <sub>t</sub>	weight		195	g

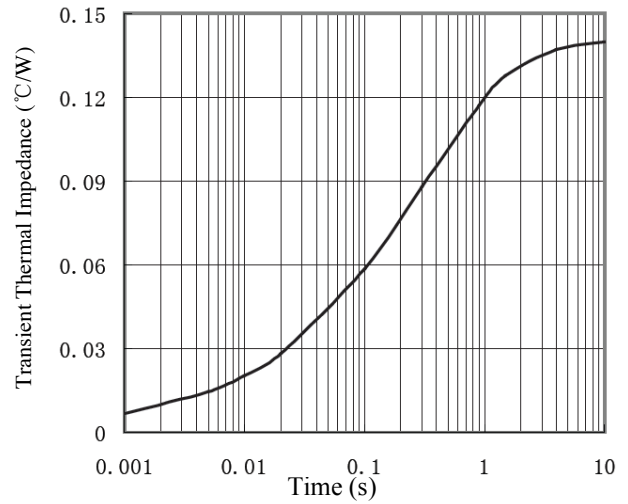
#### Electrical characteristics

Symbol	Parameter	Test condition	Rating	Unit
I <sub>RRM</sub>	Peak reverse repetitive current	Single-side heat dissipation, V <sub>R</sub> =V <sub>RRM</sub> , sine half wave, T <sub>j</sub> =150°C	10	mA
V <sub>FM</sub>	Peak forward voltage	I <sub>FM</sub> =200A, T <sub>j</sub> =25°C	1.2	V
R <sub>th(j-c)</sub>	Thermal impedance (junction-case)	Single-side heat dissipation, sine half wave	0.14	°C/W

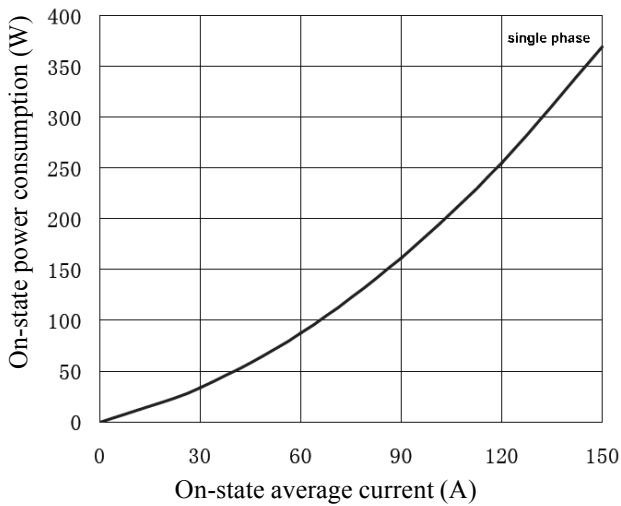
Forward current vs. Forward voltage



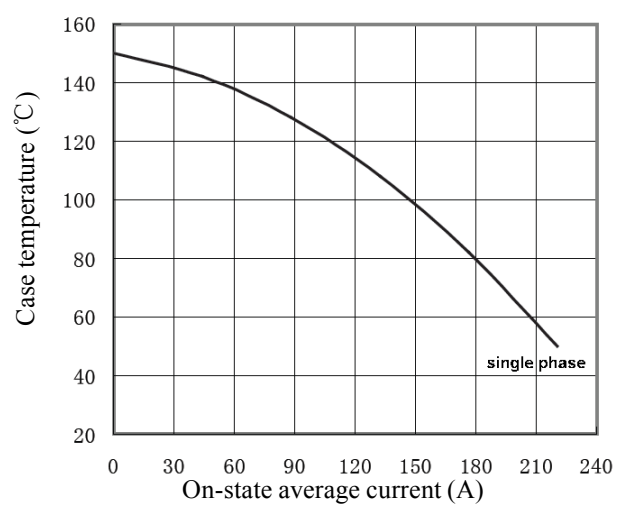
Thermal Impedance (junction to case)



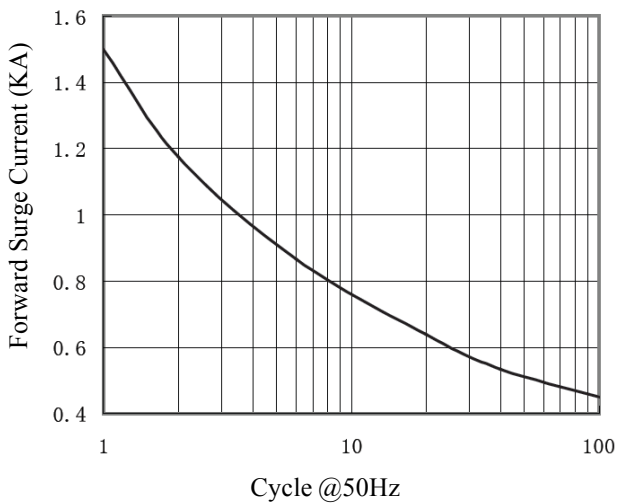
Power Consumption vs. Average Current



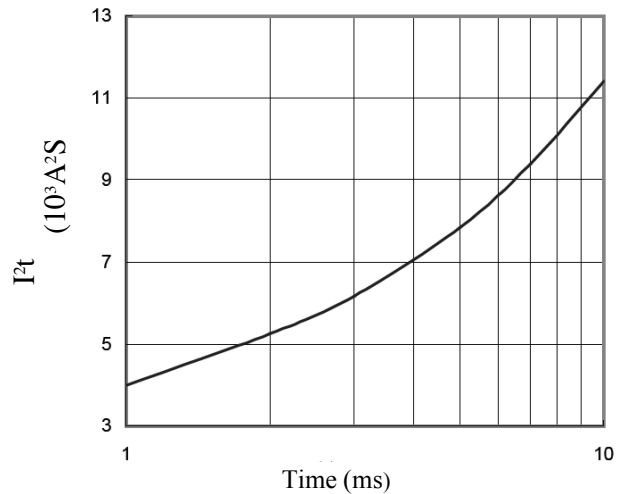
Case Temperature vs. O-state Average Current



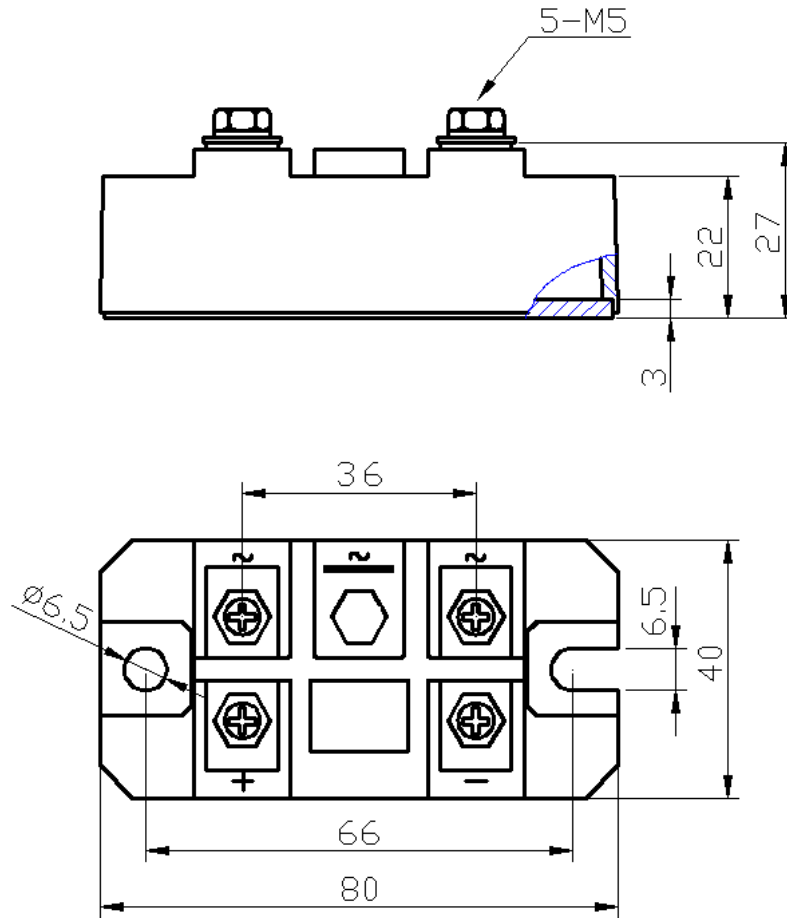
Forward Surge Current vs. Cycle



I<sup>2</sup>t Characteristics



**Dimension**



## X-ON Electronics

Largest Supplier of Electrical and Electronic Components

*Click to view similar products for [Bridge Rectifiers](#) category:*

*Click to view products by [GREGOO](#) manufacturer:*

Other Similar products are found below :

[MB2510](#) [MB252](#) [MB356G](#) [MB358G](#) [MP358-BP](#) [GBJ1504-BP](#) [GBU15J-BP](#) [GBU15K-BP](#) [GBU4A-BP](#) [GBU4D-BP](#) [GBU6B-E3/45](#)  
[GSIB680-E3/45](#) [DB101-BP](#) [DF01](#) [DF10SA-E345](#) [BU1508-E3/45](#) [KBPC50-10S](#) [RS405GL-BP](#) [G5SBA60-E3/51](#) [GBJ1502-BP](#) [GBU10J-BP](#)  
[GBU4J-BP](#) [GBU6M](#) [GBU8D-BP](#) [GBU8J-BP](#) [GSIB1520-E3/45](#) [2KBB10](#) [36MB140A](#) [TB102M](#) [MB1510](#) [MB258](#) [MB6M-G](#) [MB86](#)  
[TL401G](#) [MDA920A2](#) [TU602](#) [TU810](#) [BR1005-BP](#) [BR101-BP](#) [BR84DTP204](#) [BU2008-E3/51](#) [36MB100A](#) [36MT160](#) [36MT60](#) [KBPC25-02](#)  
[VS-2KBB60](#) [DBB08G-TM-E](#) [DBD250G](#) [DBF20G](#) [DF06SA-E345](#)