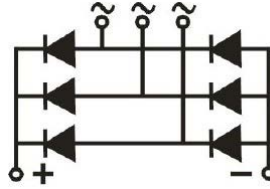


Feature

- International standard package
- Low forward voltage drop
- Isolation voltage 2500V~

Application

- DC power suppliers for apparatus device
- Input rectifying power supply for PWM converters
- Inverter welders



Maximum value

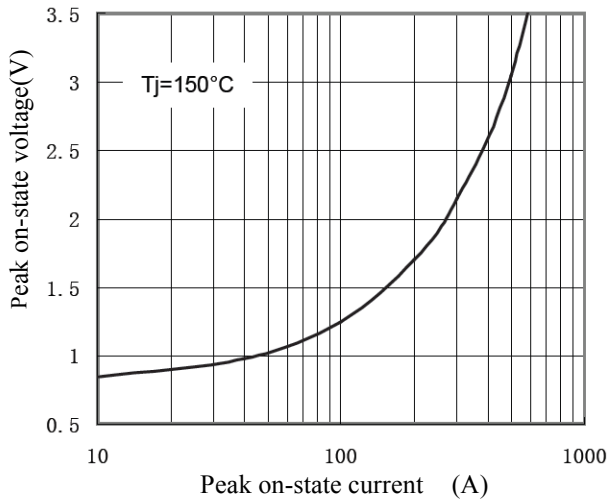
Symbol	Parameter	Rating		Unit
		MDS100-12	MDS100-16	
V_{RRM}	Peak reverse repetitive voltage	1200	1600	V
V_{RSM}	Peak reverse non-repetitive voltage	1300	1700	V

Symbol	Parameter	Test condition	Rating	Unit
I_o	Output DC current	Three-phase whole wave rectifying circuit $T_c:100^{\circ}C$	100	A
I_{FSM}	Forward surge current	$t=10ms, 50HZ, sin, T_{jm}$	1200	A
I^2t	I^2t value	$V_R = 0.6V_{RRM}, T_{jm}$	7200	A ² S
V_{ISO}	Isolation voltage	AC one min	2500	V
T_j	Operating junction temperature		-40 to +150	$^{\circ}C$
T_{jm}	Rated junction temperature		150	$^{\circ}C$
T_{stg}	Storage temperature		-40 to +125	$^{\circ}C$
Md	Mounting torque (copper plate) M6		4	N·m
	Mounting torque (terminal) M6		4	N·m
W_t	weight		195	g

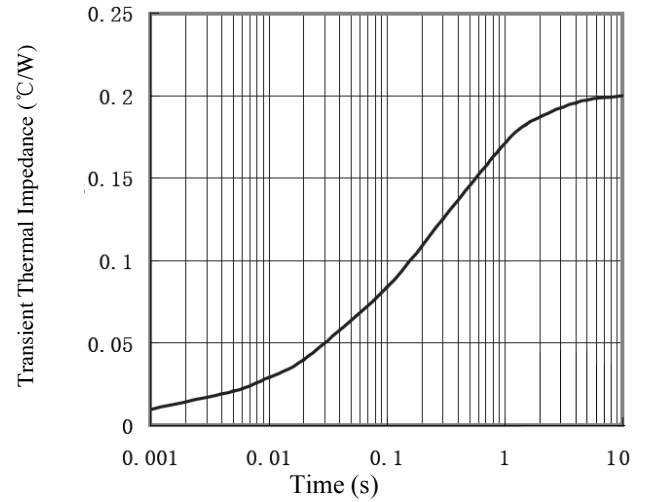
Electrical characteristics

Symbol	Parameter	Test condition	Rating	Unit
I_{RRM}	Peak reverse repetitive current	Single-side heat dissipation, $V_R=V_{RRM}$, sine half wave, $T_j=150^{\circ}C$	8	mA
V_{FM}	Peak forward voltage	$I_{FM}=200A, T_j=25^{\circ}C$	1.3	V
$R_{th(j-c)}$	Thermal impedance (junction-case)	Single-side heat dissipation, sine half wave	0.2	$^{\circ}C/W$

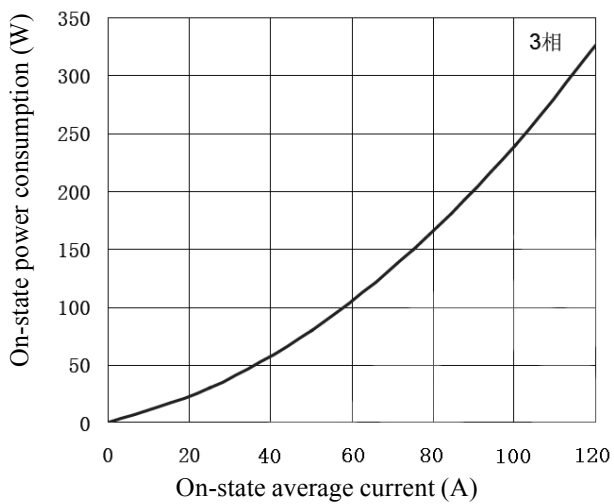
Forward current vs. Forward voltage



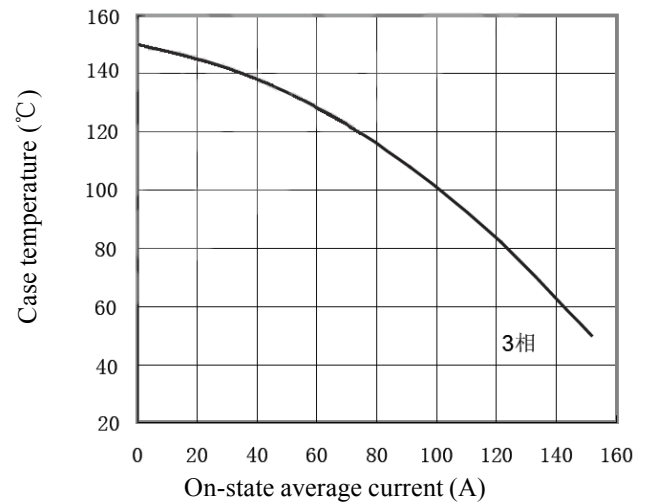
Thermal Impedance (junction to case)



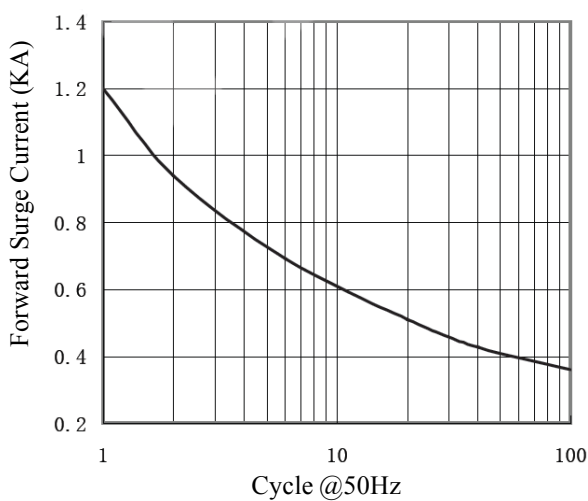
Power Consumption vs. Average Current



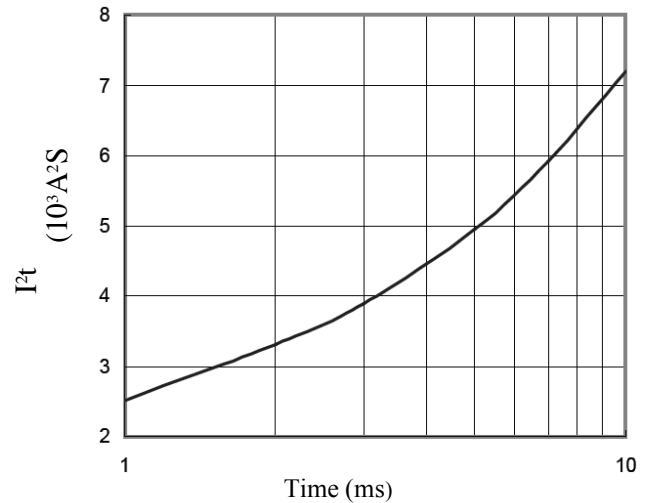
Case Temperature vs. O-state Average Current



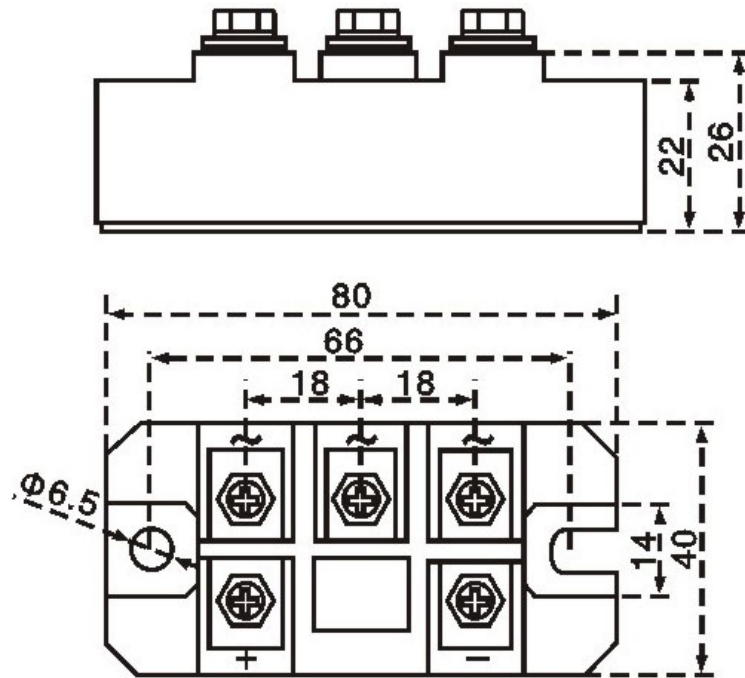
Forward Surge Current vs. Cycle



I^2t Characteristics



Dimension



X-ON Electronics

Largest Supplier of Electrical and Electronic Components

Click to view similar products for [Bridge Rectifiers](#) category:

Click to view products by [GREGOO](#) manufacturer:

Other Similar products are found below :

[MB2510](#) [MB252](#) [MB356G](#) [MB358G](#) [MP358-BP](#) [GBJ1504-BP](#) [GBU15J-BP](#) [GBU15K-BP](#) [GBU4A-BP](#) [GBU4D-BP](#) [GBU6B-E3/45](#)
[GSIB680-E3/45](#) [DB101-BP](#) [DF01](#) [DF10SA-E345](#) [BU1508-E3/45](#) [KBPC50-10S](#) [RS405GL-BP](#) [G5SBA60-E3/51](#) [GBJ1502-BP](#) [GBU10J-BP](#)
[GBU4J-BP](#) [GBU6M](#) [GBU8D-BP](#) [GBU8J-BP](#) [GSIB1520-E3/45](#) [2KBB10](#) [36MB140A](#) [TB102M](#) [MB1510](#) [MB258](#) [MB6M-G](#) [MB86](#)
[TL401G](#) [MDA920A2](#) [TU602](#) [TU810](#) [BR1005-BP](#) [BR101-BP](#) [BR84DTP204](#) [BU2008-E3/51](#) [36MB100A](#) [36MT160](#) [36MT60](#) [KBPC25-02](#)
[VS-2KBB60](#) [DBB08G-TM-E](#) [DBD250G](#) [DBF20G](#) [DF06SA-E345](#)