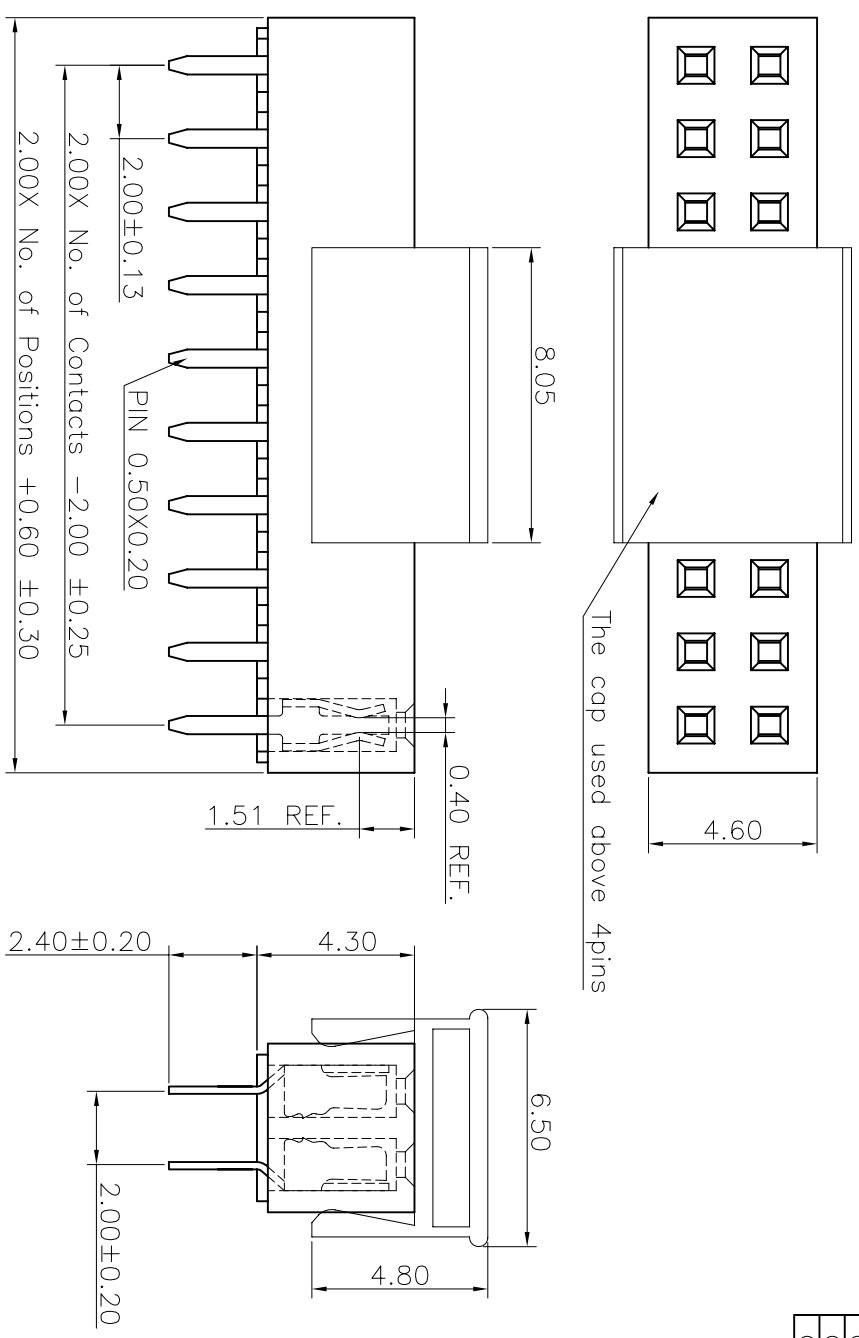


REV.	LOCAS.	DESCRIPTION	DATE	DRAWN
01	NEW	BATCH PRODUCTION INITIAL RELEASE.	2010.06.08	謝金發
02	△	依上級要求變更圖號	2012.04.25	李芳忠
03	△	依業務要求增加82電鍍碼	2019.10.17	馮國東

Specifications
 Current Rating: 2.0Amp
 Insulation Resistance: 1000MΩMin.
 Dielectric Withstanding Voltage: 500VAC
 Contact Resistance: 20mΩMax.
 Operating Temperature: -40°C to +105°C
 Materials
 Contact Material: Phosphor Bronze
 Insulator Material: High Temperature Thermoplastic, UL 94V-0 Nylon 6T (Halogen Free) or the equivalent material
 All materials must meet Greenconn hazardous substances control standards.

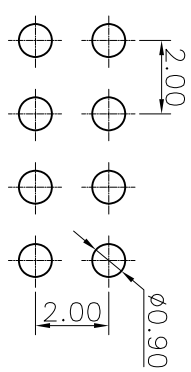


Ordering Information

C SFA201 - XX XX A 001 R 1 A X

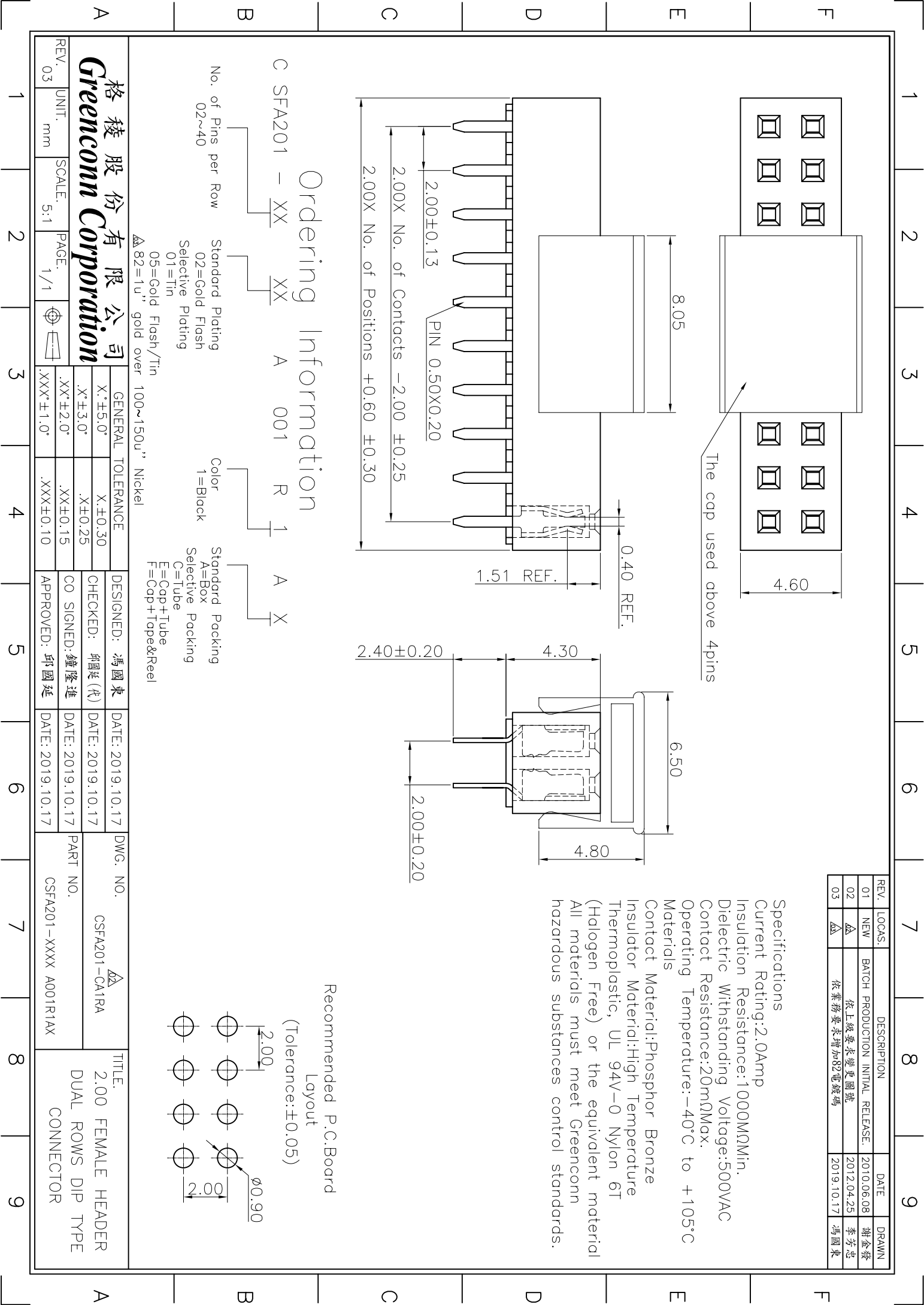
No. of Pins per Row: 02~40
 Standard Plating
 02=Gold Flash
 Selective Plating
 01=Tin
 05=Gold Flash/Tin
 △82=1u" gold over 100~150u" Nickel

Color: 1=Black
 Standard Packing: A=Box, C=Tube, E=Cap+Tube, F=Cap+Tape&Reel



Recommended P.C. Board Layout
 (Tolerance: ±0.05)

格菱股份有限公司 Greenconn Corporation			GENERAL TOLERANCE X.±5.0° X.±3.0° X.±0.25 .XX±2.0° .XX±0.15 .XXX±1.0°		DESIGNED: 馮國東 CHECKED: 邱國廷(代) CO SIGNED: 鍾隆達 APPROVED: 邱國廷		DWG. NO. CSFA201-CA1RA		TITLE: 2.00 FEMALE HEADER DUAL ROWS DIP TYPE CONNECTOR	
REV. 03	UNIT. mm	SCALE. 5:1	PAGE. 1/1	.XXX±1.0° .XXX±0.10		DATE: 2019.10.17 DATE: 2019.10.17 DATE: 2019.10.17 DATE: 2019.10.17		PART NO. CSFA201-XXXX A001R1AX		



X-ON Electronics

Largest Supplier of Electrical and Electronic Components

Click to view similar products for [Headers & Wire Housings](#) category:

Click to view products by [GREENCONN](#) manufacturer:

Other Similar products are found below :

[0015917161](#) [0022155065](#) [57102-F02-18ULF](#) [58102-G61-06LF](#) [582553-1](#) [01.001.5753.1](#) [0050291907](#) [02.125.8002.8](#) [609-3404](#) [61062-3](#)
[CSU011177004](#) [622-0430](#) [622-3653LF](#) [63453-116](#) [636-1030](#) [636-1427](#) [636-3427](#) [636-4007](#) [641938-9](#) [65495-038](#) [65692-001LF](#) [65781-018](#)
[65781-047](#) [65817-010LF](#) [65817-015LF](#) [67095-007LF](#) [67601157](#) [68631-112](#) [68645-018](#) [699319-000](#) [70.362.1628.0](#) [70-4210](#) [70-4226B](#) [70-](#)
[4853B](#) [71.350.2428.0](#) [733-134](#) [733-162](#) [760-3052](#) [MHR-64-VUAL](#) [80.063.4001.1](#) [800-90-001-10-001000](#) [801-43-002-10-013000](#)
[801-43-006-10-002000](#) [803-43-024-10-001000](#) [803-93-012-10-001000](#) [8-1437020-4](#) [819-22-004-30-001101](#) [820-22-006-30-001101](#)
[820-22-008-30-001101](#) [821-22-002-10-001101](#)