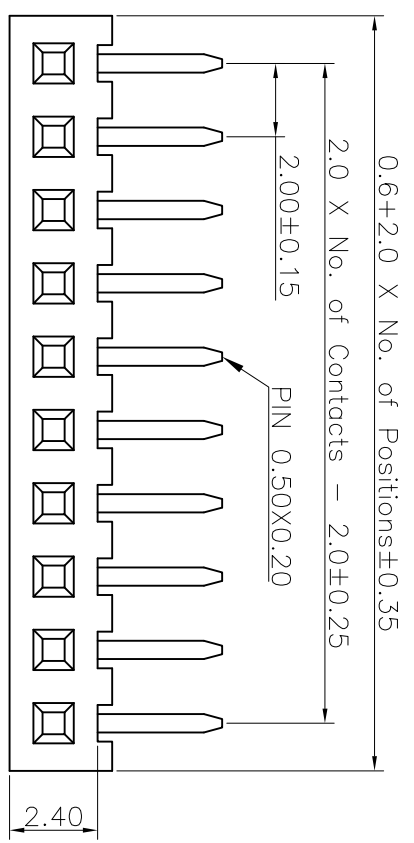
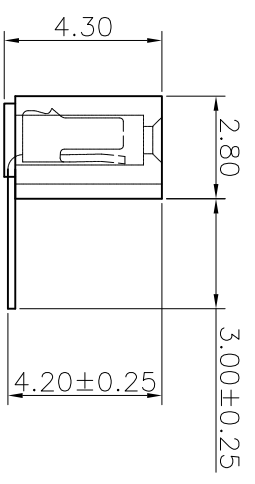
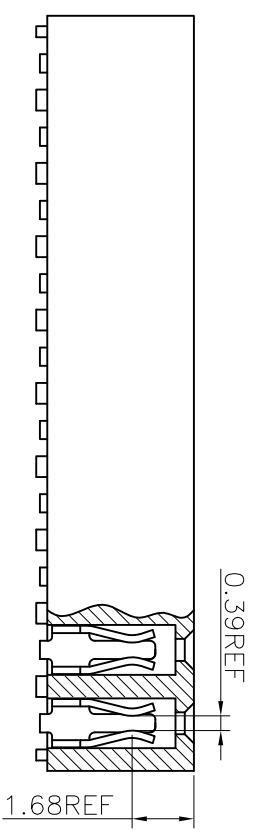


REV.	LOCAS.	DESCRIPTION	DATE	DRAWN
01	NEW	INITIAL RELEASE.	2011.03.29	蒙華明



Specifications  
 Current Rating: 2.0Amp  
 Insulation Resistance:1000MΩMin.  
 Dielectric Withstanding Voltage:500VAC  
 Contact Resistance:20mΩMax.  
 Operating Temperature:-40°C to +105°C  
 Materials  
 Contact Material:Phosphor Bronze  
 Insulator Material:High Temperature Thermoplastic, UL 94V-0 LCP or the equivalent material  
 All materials must meet Greenconn requirement for environment protection.

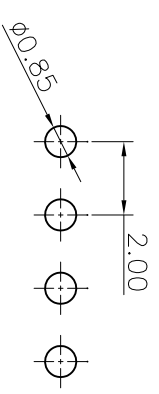


### Ordering Information

C SFB102 - XX XX A 001 C 1 A X

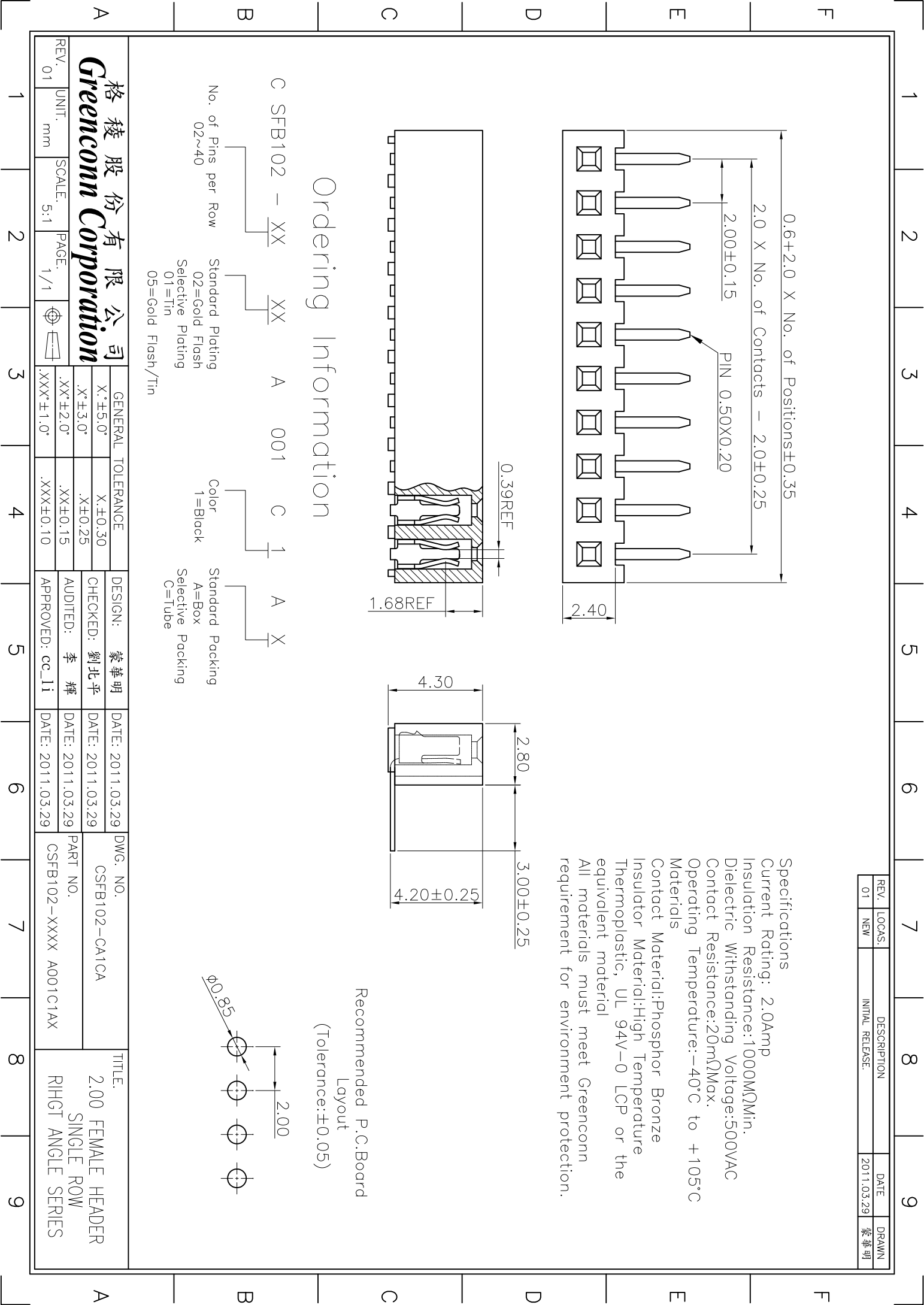
No. of Pins per Row  
 02~40  
 Standard Plating  
 02=Gold Flash  
 Selective Plating  
 01=Tin  
 05=Gold Flash/Tin

Color  
 1=Black  
 Standard Packing  
 A=Box  
 Selective Packing  
 C=Tube



Recommended P.C.Board  
 Layout  
 (Tolerance:±0.05)

<b>格菱股份有限公司</b> <b>Greenconn Corporation</b>				GENERAL TOLERANCE X.±5.0° X.±0.30 .X.±3.0° .X±0.25 .XX±2.0° .XX±0.15 .XXX±1.0° .XXX±0.10		DESIGN: 蒙華明 CHECKED: 劉北平 AUDITED: 李輝 APPROVED: cc_li		DATE: 2011.03.29 DATE: 2011.03.29 DATE: 2011.03.29 DATE: 2011.03.29		DWG. NO. CSFB102-CA1CA		TITLE. 2.00 FEMALE HEADER SINGLE ROW RHGT ANGLE SERIES	
REV. 01	UNIT. mm	SCALE. 5:1	PAGE. 1/1							PART NO. CSFB102-XXXX A001C1AX			



## X-ON Electronics

Largest Supplier of Electrical and Electronic Components

*Click to view similar products for [Headers & Wire Housings](#) category:*

*Click to view products by [GREENCONN](#) manufacturer:*

Other Similar products are found below :

[0015917161](#) [0022155065](#) [57102-F02-18ULF](#) [58102-G61-06LF](#) [582553-1](#) [01.001.5753.1](#) [0050291907](#) [02.125.8002.8](#) [609-3404](#) [61062-3](#)  
[CSU011177004](#) [622-0430](#) [622-3653LF](#) [63453-116](#) [636-1030](#) [636-1427](#) [636-3427](#) [636-4007](#) [641938-9](#) [65495-038](#) [65692-001LF](#) [65781-018](#)  
[65781-047](#) [65817-010LF](#) [65817-015LF](#) [67095-007LF](#) [67601157](#) [68631-112](#) [68645-018](#) [699319-000](#) [70.362.1628.0](#) [70-4210](#) [70-4226B](#) [70-](#)  
[4853B](#) [71.350.2428.0](#) [733-134](#) [733-162](#) [760-3052](#) [MHR-64-VUAL](#) [80.063.4001.1](#) [800-90-001-10-001000](#) [801-43-002-10-013000](#)  
[801-43-006-10-002000](#) [803-43-024-10-001000](#) [803-93-012-10-001000](#) [8-1437020-4](#) [819-22-004-30-001101](#) [820-22-006-30-001101](#)  
[820-22-008-30-001101](#) [821-22-002-10-001101](#)