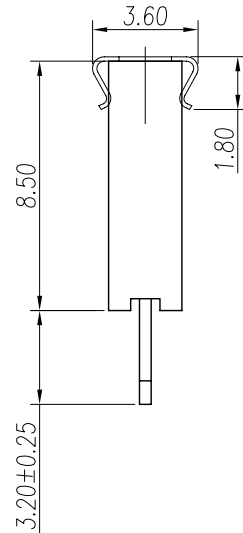
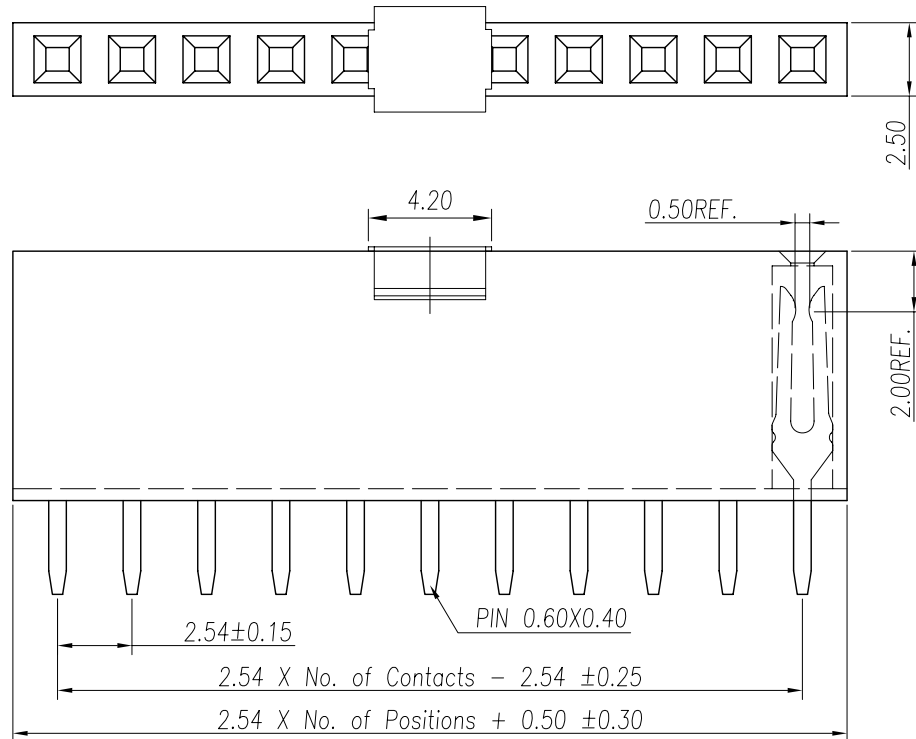


REV.	LOCAS.	DESCRIPTION	DATE	DRAWN
03	△	變更料號	2009.03.03	李彬彬
04	△	依上級要求變更圖號	2011.08.11	李芳忠



Specifications
 Current Rating: 3Amp
 Insulation Resistance: 1000MΩMin.
 Dielectric Withstanding Voltage: 600VAC
 Contact Resistance: 20mΩMax.
 Operating Temperature: -40°C to +105°C
 Materials
 Contact Material: Phosphor Bronze
 Insulator Material: Thermoplastic, UL 94V-0
 PBT or the equivalent material
 All materials must meet Greenconn
 requirement for environment protection.

△ Ordering Information △

C SHA101 - XX XX A 001 A X A X

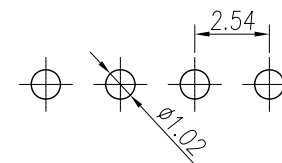
No. Of Pins Per Row
02~40

Standard Plating
02=Gold Flash
Selective Plating
01=Tin
05=Gold Flash/Tin

Color
1=Black
6=Gray
K=Pink

Standard Packing
A=Box
Selective Packing
C=Tube
E=Cap+Tube
F=Cap+Tape&Reel

Recommended P.C.Board
 Layout
 (Tolerance: ±0.05)



格菱股份有限公司
Greenconn Corporation

GENERAL TOLERANCE		DESIGN:	李芳忠	DATE:	2011.08.11
X'±5.0'	X.±0.30	CHECKED:	劉北平	DATE:	2011.08.11
.X'±3.0'	.X±0.25	AUDITED:	李輝	DATE:	2011.08.11
.XX'±2.0'	.XX±0.15	APPROVED:	cc_li	DATE:	2011.08.11
.XXX'±1.0'	.XXX±0.10				

DWG. NO.	△△ CSHA101-CA1AA
PART NO.	△ CSHA101-XXXX A001AXAX

TITLE.
 2.54 FEMALE HEADER
 SINGLE ROW DIP TYPE
 CONNECTOR

REV.	UNIT.	SCALE.	PAGE.	Symbol
04	mm	4:1	1/1	☉

X-ON Electronics

Largest Supplier of Electrical and Electronic Components

Click to view similar products for [Headers & Wire Housings](#) category:

Click to view products by [GREENCONN](#) manufacturer:

Other Similar products are found below :

[0015917161](#) [0022155065](#) [57102-F02-18ULF](#) [58102-G61-06LF](#) [582553-1](#) [01.001.5753.1](#) [0050291907](#) [02.125.8002.8](#) [609-3404](#) [61062-3](#)
[CSU011177004](#) [622-0430](#) [622-3653LF](#) [63453-116](#) [636-1030](#) [636-1427](#) [636-3427](#) [636-4007](#) [641938-9](#) [65495-038](#) [65692-001LF](#) [65781-018](#)
[65781-047](#) [65817-010LF](#) [65817-015LF](#) [67095-007LF](#) [67601157](#) [68631-112](#) [68645-018](#) [699319-000](#) [70.362.1628.0](#) [70-4210](#) [70-4226B](#) [70-](#)
[4853B](#) [71.350.2428.0](#) [733-134](#) [733-162](#) [760-3052](#) [MHR-64-VUAL](#) [80.063.4001.1](#) [800-90-001-10-001000](#) [801-43-002-10-013000](#)
[801-43-006-10-002000](#) [803-43-024-10-001000](#) [803-93-012-10-001000](#) [8-1437020-4](#) [819-22-004-30-001101](#) [820-22-006-30-001101](#)
[820-22-008-30-001101](#) [821-22-002-10-001101](#)