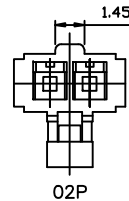
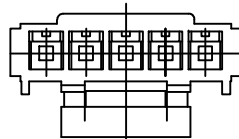
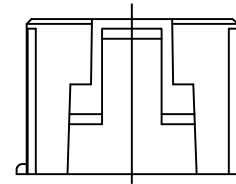
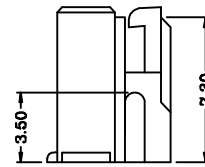
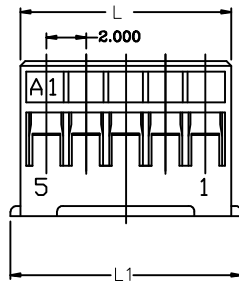
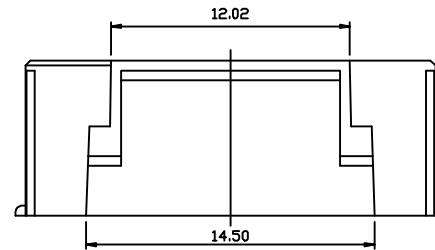
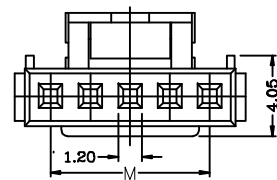


Specifications:  
 Current rating: 3A AC/DC.  
 Voltage rating: 250V AC/DC  
 Temperature range: -40°C~+105°C.  
 Contact resistance: 30mΩ Max.  
 Insulation resistance: 1000MΩ Min.  
 Withstanding voltage: 1000V AC/minute.  
 Material: Nylon66 UL94V-0.



**GHF571 - XX A X**

**No. of Pin/Row  
02 ~16**

**Material/Color  
M=NYLON 66/White  
NF=NYLON 66/Transparent**

No. of Pin	Dimensions		
	M	L	L1
02P	2.00	4.60	5.60
03P	4.00	6.60	7.60
04P	6.00	8.60	9.60
05P	8.00	10.60	11.60
06P	10.00	12.60	13.60
07P	12.00	14.60	15.60
08P	14.00	16.60	17.60
09P	16.00	18.60	19.60
10P	18.00	20.60	21.60
11P	20.00	22.60	23.60
12P	22.00	24.60	25.60
13P	24.00	26.60	27.60
14P	26.00	28.60	29.60
15P	28.00	30.60	31.60
16P	30.00	32.60	33.60



Website: www.greenconn.com  
 E-mail: sales@greenconn.com

REV. A UNIT. mm SCALE. 1:1

3RD.ANG PROJ.  
 1/1

GENERAL TOLERANCE	
X: ±/	X.± /
.X' ±/	.X± 0.25
.XX' ±/	.XX± 0.15
.XXX' ±/	.XXX± 0.10

DESIGNED:  
 CHECKED:  
 APPROVED:

DATE:  
 DATE:  
 DATE:

DWG. NO.  
 GHF571-HA  
 PART NO.  
 GHF571-XXAX

TITLE.  
 2.00mm pitch housing

## X-ON Electronics

Largest Supplier of Electrical and Electronic Components

*Click to view similar products for [Headers & Wire Housings](#) category:*

*Click to view products by [GREENCONN](#) manufacturer:*

Other Similar products are found below :

[0015917161](#) [0022155065](#) [57102-F02-18ULF](#) [58102-G61-06LF](#) [582553-1](#) [01.001.5753.1](#) [0050291907](#) [02.125.8002.8](#) [609-3404](#) [61062-3](#)  
[CSU011177004](#) [622-0430](#) [622-3653LF](#) [63453-116](#) [636-1030](#) [636-1427](#) [636-3427](#) [636-4007](#) [641938-9](#) [65495-038](#) [65692-001LF](#) [65781-018](#)  
[65781-047](#) [65817-010LF](#) [65817-015LF](#) [67095-007LF](#) [67601157](#) [68631-112](#) [68645-018](#) [699319-000](#) [70.362.1628.0](#) [70-4210](#) [70-4226B](#) [70-](#)  
[4853B](#) [71.350.2428.0](#) [733-134](#) [733-162](#) [760-3052](#) [MHR-64-VUAL](#) [80.063.4001.1](#) [800-90-001-10-001000](#) [801-43-002-10-013000](#)  
[801-43-006-10-002000](#) [803-43-024-10-001000](#) [803-93-012-10-001000](#) [8-1437020-4](#) [819-22-004-30-001101](#) [820-22-006-30-001101](#)  
[820-22-008-30-001101](#) [821-22-002-10-001101](#)