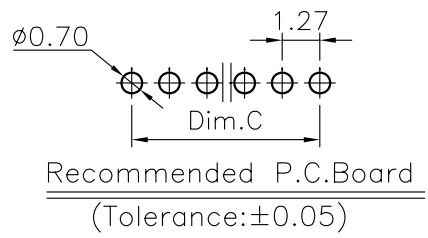
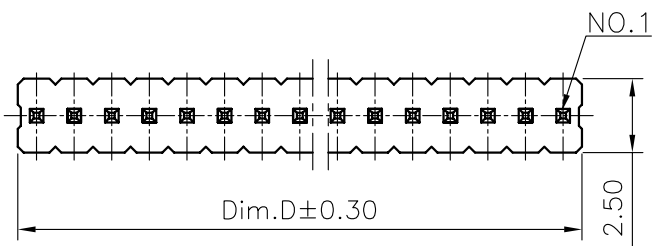


REV.	LOCAS	DESCRIPTION	DATE	DRAWN
012	012	變更新圖號	2011.01.15	黃明霞
013	013	依業務要求, 新增產品規格	2016.11.04	馮國東
014	014	依業務要求, 新增產品規格	2016.12.05	馮國東
015	015	依業務要求, 新增產品規格	2017.01.12	馮國東

F  
E  
D  
C  
B  
A

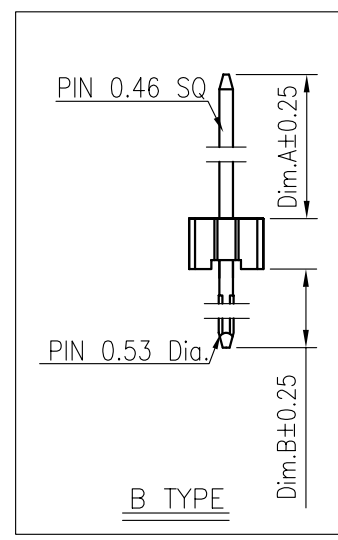
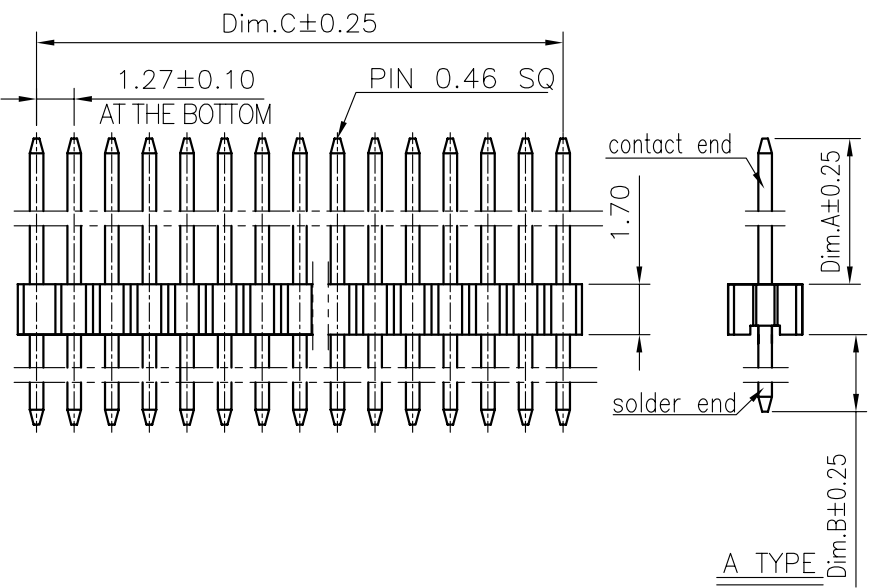


1. Specifications

- 1.1 Current Rating: 1Amp
- 1.2 Insulation Resistance: 1000MΩ Min.
- 1.3 Dielectric Withstanding: 300V AC
- 1.4 Contact Resistance: 20mΩ Max.
- 1.5 Operating Temperature: -40°C to +105°C

2. Materials

- 2.1 Contact Material:  
A=Phosphor Bronze, B=Brass
- 2.2 Insulation Material: Polyester, UL 94V-0  
LCP Black  
Or Equivalent material
- 2.3 All materials must meet GREENCONN hazardous substances control standards.



Ordering Information

G PEA103 - XX XX AXXX C 1 X X

No. of Pins per Row: 02~50  
 Standard Plating: 02=Gold Flash  
 Selective Plating: 01=Tin, 05=Gold Flash/Tin  
 Standard Packing: A=box, C=Tube  
 Selective Packing: A1, A2, A3

A

格稜股份有限公司 <b>Greenconn Corporation</b>			GENERAL TOLERANCE		DESIGNED: 馮國東	DATE: 2017.01.12	DWG. NO. 012, 002 GPEA103-CAXXXCX	TITLE: 1.27PIN HEADER SINGLE ROW DIP TYPE CONNECTOR
			X.*±5.0°	X.±0.30	CHECKED: 曹 熙	DATE: 2017.01.12		
REV. 015	UNIT. mm	SCALE. 4:1	PAGE. 1/2	.X.*±3.0°	.X.±0.25	CO SIGNED: 廖世龍	DATE: 2017.01.12	PART NO. 003 GPEA103-XXXXAXXXC1XX
				.XX.*±2.0°	.XX±0.15	APPROVED: 李 輝	DATE: 2017.01.12	
				.XXX.*±1.0°	.XXX±0.10			

REV.	LOCAS	DESCRIPTION	DATE	DRAWN
012	012	變更新圖號	2011.01.15	黃明霞
013	013	依業務要求，新增產品規格	2016.11.04	馮國東
014	014	依業務要求，新增產品規格	2016.12.05	馮國東
015	015	依業務要求，新增產品規格	2017.01.12	馮國東

F

TABLE. 1

serial NO.	Dimension Information		Pin request		material contact	Remark
	Dim.A	Dim.B	pin type	void pins		
A001C1BX	2.80	2.60	B type	-----	B	
A002C1AX	3.30	1.90	B type	-----	A	
A020C1BX	3.30	1.70	B type	-----	B	
A064C1BX	6.30	2.00	A type	-----	B	
A066C1BX	3.10	2.00	A type	-----	B	
A068C1BX	2.80	2.60	A type	-----	B	
A073C1BX	2.70	2.20	A type	-----	B	
A074C1BX	3.00	2.60	A type	-----	B	
A075C1BX	6.00	3.00	A type	-----	B	
A076C1BX	10.00	3.00	A type	-----	B	
A077C1BX	1.70	1.70	A type	-----	B	
A078C1BX	2.50	2.50	A type	-----	B	
A079C1BX	6.00	2.50	A type	-----	B	
A080C1BX	2.50	2.00	A type	-----	B	
A081C1BX	6.00	2.60	A type	-----	B	
A082C1BX	2.50	1.60	A type	-----	B	
A071C1BX	2.80	2.10	A type	-----	B	
A083C1BX	9.80	3.20	A type	-----	B	
A086C1BX	3.00	2.30	A type	-----	B	
A087C1BX	1.50	2.40	A type	-----	B	
A088C1BX	3.60	2.80	A type	-----	B	
A089C1BX	1.80	1.00	A type	-----	B	
A090C1BX	1.00	3.40	A type	-----	B	
A091C1BX	3.40	3.30	A type	-----	B	
A068C1AX	2.80	2.60	A type	-----	A	
A092C1BX	2.50	3.00	A type	-----	B	
A098C1BX	8.00	8.00	A type	-----	B	
A099C1BX	2.00	2.60	A type	-----	B	

E

D

C

B

A

TABLE. 2

No. of PIN/ROW	Dimension Information	
	Dim.C	Dim.D
02	1.27	2.54
03	2.54	3.81
04	3.81	5.08
05	5.08	6.35
06	6.35	7.62
07	7.62	8.89
08	8.89	10.16
09	10.16	11.43
10	11.43	12.70
11	12.70	13.97
12	13.97	15.24
13	15.24	16.51
14	16.51	17.78
15	17.78	19.05
16	19.05	20.32
17	20.32	21.59
18	21.59	22.86
19	22.86	24.13
20	24.13	25.40
21	25.40	26.67
22	26.67	27.94
23	27.94	29.21
24	29.21	30.48
25	30.48	31.75
26	31.75	33.02
27	33.02	34.29
28	34.29	35.56
29	35.56	36.83
30	36.83	38.10
31	38.10	39.37
32	39.37	40.64
33	40.64	41.91
34	41.91	43.18
35	43.18	44.45
36	44.45	45.72
37	45.72	46.99
38	46.99	48.26
39	48.26	49.53
40	49.53	50.80
41	50.80	52.07
42	52.07	53.34
43	53.34	54.61
44	54.61	55.88
45	55.88	57.15
46	57.15	58.42
47	58.42	59.69
48	59.69	60.96
49	60.96	62.23
50	62.23	63.50

F

E

D

C

B

A

<b>格菱股份有限公司</b> <b>Greenconn Corporation</b>			GENERAL TOLERANCE		DESIGNED: 馮國東	DATE: 2017.01.12	DWG. NO. GPEA103-CAXXXXCX	TITLE. 1.27PIN HEADER SINGLE ROW DIP TYPE CONNECTOR	
			X.*±5.0°	X.±0.30	CHECKED: 曹 熙	DATE: 2017.01.12			
REV. 015	UNIT. mm	SCALE. 4:1	PAGE. 2/2		.XX*±2.0°	.XX±0.15	CO SIGNED: 廖世龍	DATE: 2017.01.12	PART NO. GPEA103-XXXXAXXXC1XX
					.XXX*±1.0°	.XXX±0.10	APPROVED: 李 輝	DATE: 2017.01.12	

## X-ON Electronics

Largest Supplier of Electrical and Electronic Components

*Click to view similar products for [Headers & Wire Housings](#) category:*

*Click to view products by [GREENCONN](#) manufacturer:*

Other Similar products are found below :

[0015917161](#) [0022155065](#) [57102-F02-18ULF](#) [58102-G61-06LF](#) [582553-1](#) [01.001.5753.1](#) [0050291907](#) [02.125.8002.8](#) [609-3404](#) [61062-3](#)  
[CSU011177004](#) [622-0430](#) [622-3653LF](#) [63453-116](#) [636-1030](#) [636-1427](#) [636-3427](#) [636-4007](#) [641938-9](#) [65495-038](#) [65692-001LF](#) [65781-018](#)  
[65781-047](#) [65817-010LF](#) [65817-015LF](#) [67095-007LF](#) [67601157](#) [68631-112](#) [68645-018](#) [699319-000](#) [70.362.1628.0](#) [70-4210](#) [70-4226B](#) [70-](#)  
[4853B](#) [71.350.2428.0](#) [733-134](#) [733-162](#) [760-3052](#) [MHR-64-VUAL](#) [80.063.4001.1](#) [800-90-001-10-001000](#) [801-43-002-10-013000](#)  
[801-43-006-10-002000](#) [803-43-024-10-001000](#) [803-93-012-10-001000](#) [8-1437020-4](#) [819-22-004-30-001101](#) [820-22-006-30-001101](#)  
[820-22-008-30-001101](#) [821-22-002-10-001101](#)