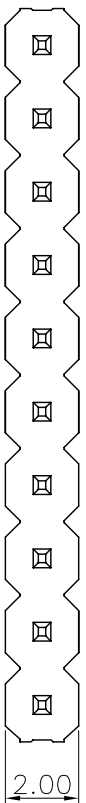


REV.	LOCAS.	DESCRIPTION	DATE	DRAWN
02	△	變更料號	2008.10.07	彭恩城
03	△	依上級要求變更圖號	2012.02.28	李芳忠



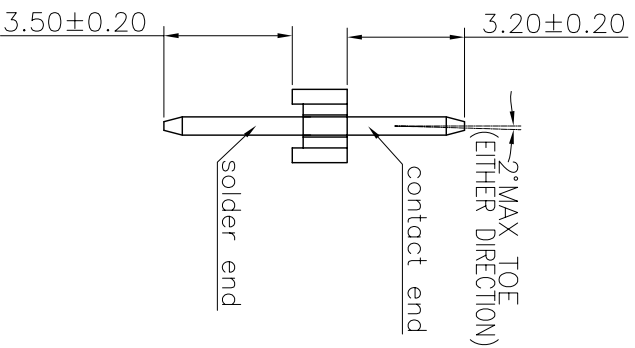
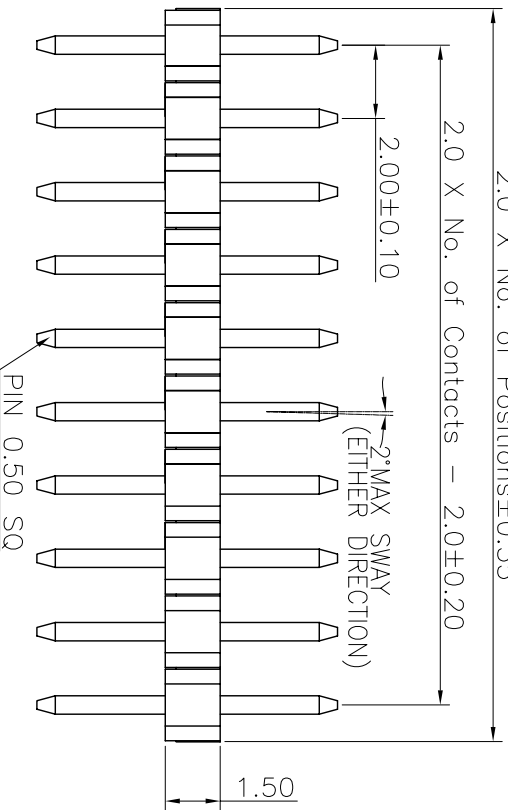
2.0 X No. of Positions ± 0.35

2.0 X No. of Contacts $- 2.0 \pm 0.20$

2.00 ± 0.10

2*MAX SWAY (EITHER DIRECTION)

1.50

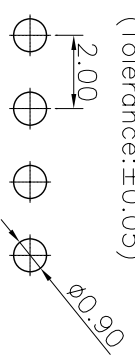


Ordering Information

G PFA102 - XX XX A 013 A 1 B X

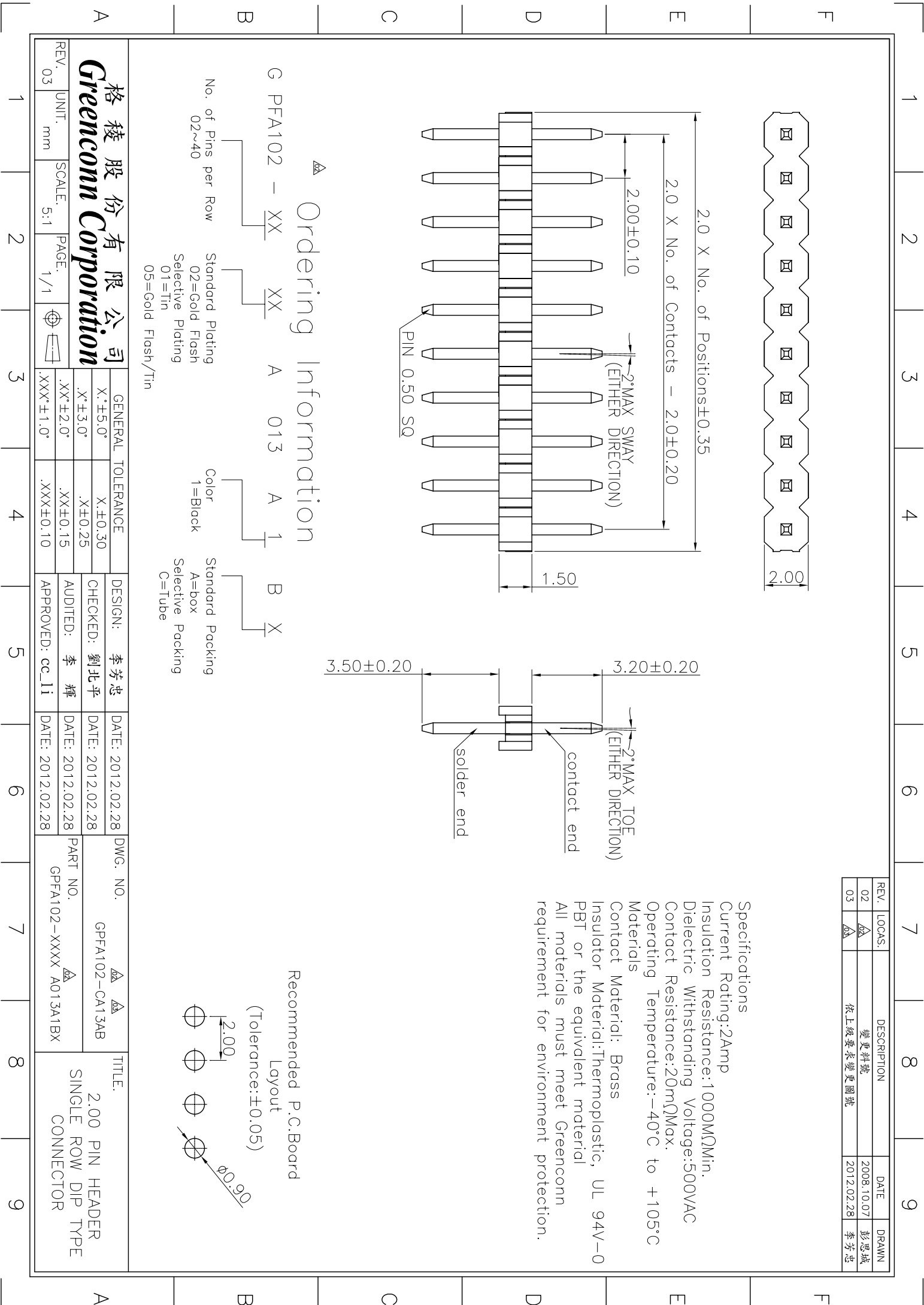
No. of Pins per Row: 02~40
 Standard Plating: 02=Gold Plating, 01=Tin, 05=Gold Flash/Tin
 Color: 1=Black
 Standard Packing: A=box, Selective Packing, C=Tube

Recommended P.C.Board Layout
 (Tolerance: ± 0.05)



REV. 03	UNIT. mm	SCALE. 5:1	PAGE. 1/1	GENERAL TOLERANCE		DESIGN: 李芳忠	DWG. NO. △△	TITLE. 2.00 PIN HEADER
				X. $\pm 5.0^\circ$	X. ± 0.30	CHECKED: 劉北平	GPF A102-CA13AB	SINGLE ROW DIP TYPE
				.XX $\pm 2.0^\circ$.XX ± 0.15	AUDITED: 李輝	PART NO. △	CONNECTOR
				.XXX $\pm 1.0^\circ$.XXX ± 0.10	APPROVED: cc_li	GPF A102-XXXX A013A1BX	
						DATE: 2012.02.28		
						DATE: 2012.02.28		
						DATE: 2012.02.28		

格菱股份有限公司
 Greenconn Corporation



X-ON Electronics

Largest Supplier of Electrical and Electronic Components

Click to view similar products for [Headers & Wire Housings](#) category:

Click to view products by [GREENCONN](#) manufacturer:

Other Similar products are found below :

[0015917161](#) [0022155065](#) [57102-F02-18ULF](#) [58102-G61-06LF](#) [582553-1](#) [01.001.5753.1](#) [0050291907](#) [02.125.8002.8](#) [609-3404](#) [61062-3](#)
[CSU011177004](#) [622-0430](#) [622-3653LF](#) [63453-116](#) [636-1030](#) [636-1427](#) [636-3427](#) [636-4007](#) [641938-9](#) [65495-038](#) [65692-001LF](#) [65781-018](#)
[65781-047](#) [65817-010LF](#) [65817-015LF](#) [67095-007LF](#) [67601157](#) [68631-112](#) [68645-018](#) [699319-000](#) [70.362.1628.0](#) [70-4210](#) [70-4226B](#) [70-](#)
[4853B](#) [71.350.2428.0](#) [733-134](#) [733-162](#) [760-3052](#) [MHR-64-VUAL](#) [80.063.4001.1](#) [800-90-001-10-001000](#) [801-43-002-10-013000](#)
[801-43-006-10-002000](#) [803-43-024-10-001000](#) [803-93-012-10-001000](#) [8-1437020-4](#) [819-22-004-30-001101](#) [820-22-006-30-001101](#)
[820-22-008-30-001101](#) [821-22-002-10-001101](#)