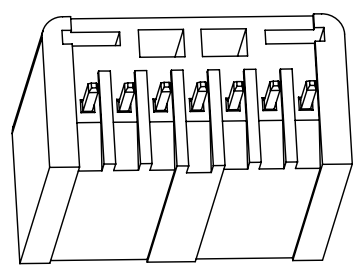
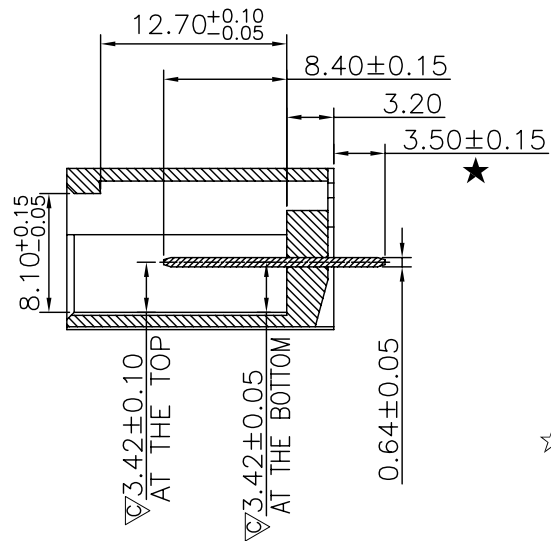
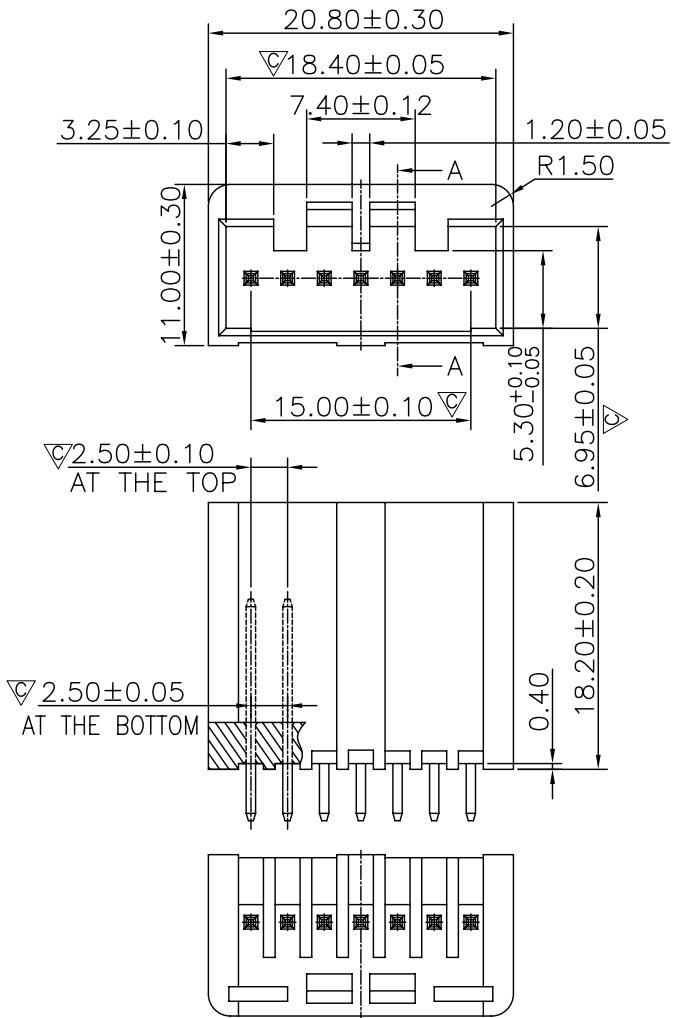


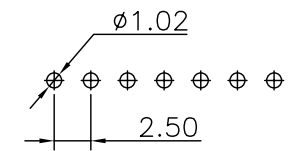
REV.	LOCAS.	DESCRIPTION	DATE	DRAWN
01	NEW	BATCH PRODUCTION INITIAL RELEASE.	2018.10.20	張春進



Specifications
 Current Rating:3.0Amp
 Insulation Resistance:1000MΩMin.
 Dielectric Withstanding Voltage:600VAC
 Contact Resistance:20mΩMax.
 Operating Temperature:-40°C to +105°C
 Materials
 Contact Material:Brass
 Insulator Material:Thermoplastic, UL 94V-0
 PBT or the equivalent material

☆ All materials must meet Greenconn hazardous substances control standards.
 "★": Critical Characteristics, functionalities, and manufacturing processes regarding to customer's specifications
 "☆": Safety Features functionalities, and manufacturing processes complying to legal regulations stated by local government

Recommended P.C.Board Layout
 (Tolerance:±0.05)



Ordering Information
 G PGA105 - 07 XX A 001 A 1 Z X

No. of Pins per Row: 07
 Standard Plating: J3=Tin
 Color: 1=Black
 Standard Packing: C=Tube

Greenconn P/N	Customer	Remarks
GPGA105-07J3 A001A1ZC	A053	Automotive Connector

格稜股份有限公司
Greenconn Corporation

GENERAL TOLERANCE		DESIGNED: 張春進	DATE: 2018.10.20
X.*±5.0°	X.±0.30	CHECKED: 曹 熙	DATE: 2018.10.20
.X*±3.0°	.X±0.25	CO SIGNED: 廖世龍	DATE: 2018.10.20
.XX*±2.0°	.XX±0.15	APPROVED: 李 輝	DATE: 2018.10.20
.XXX*±1.0°	.XXX±0.10		

DWG. NO.	TITLE.
GPGA105-CA1AZ	2.50 BOX HEADER SINGLE ROW DIP TYPE CONNECTOR
PART NO. GPGA105-07XX A001A1ZC	

REV.	UNIT.	SCALE.	PAGE.
01	mm	2:1	1/1

X-ON Electronics

Largest Supplier of Electrical and Electronic Components

Click to view similar products for [Headers & Wire Housings](#) category:

Click to view products by [GREENCONN](#) manufacturer:

Other Similar products are found below :

[57102-F02-18ULF](#) [58102-G61-06LF](#) [582553-1](#) [009176003701906](#) [01.001.5753.1](#) [0050291907](#) [02.125.8002.8](#) [609-3404](#) [61062-3](#)
[CSU011177004](#) [622-0430](#) [622-3653LF](#) [63453-116](#) [636-1030](#) [636-1427](#) [636-3427](#) [636-4007](#) [641938-9](#) [644827-2](#) [65495-038](#) [65692-001LF](#)
[65781-018](#) [65781-047](#) [65817-010LF](#) [65817-015LF](#) [66207-023LF](#) [67095-007LF](#) [67601157](#) [68631-112](#) [68645-018](#) [699319-000](#)
[M90C108951C](#) [70.362.1628.0](#) [70-4210](#) [70-4226B](#) [70-4853B](#) [707-5028](#) [71.350.2428.0](#) [71961-016LF](#) [733-134](#) [733-162](#) [754199-000](#) [760-](#)
[3052](#) [80.063.4001.1](#) [800-90-001-10-001000](#) [800-90-010-10-002000](#) [801-43-002-10-013000](#) [801-43-006-10-002000](#) [803-41-018-10-001000](#)
[803-43-024-10-001000](#)