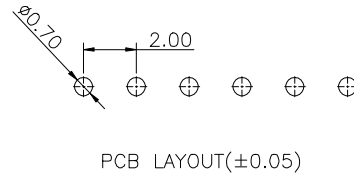
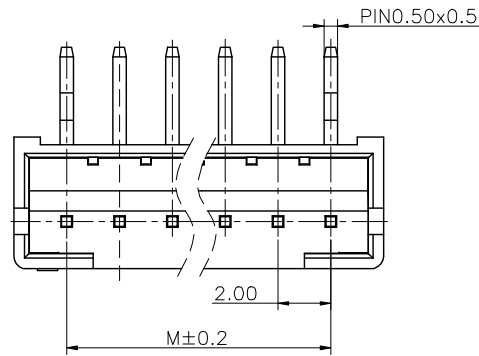


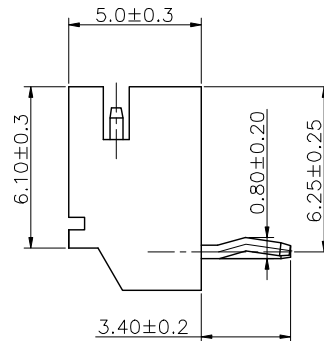
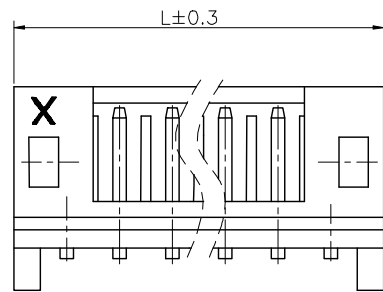
1 2 3 4 5 6 7 8 9

F
E
D
C
B
A

F
E
D
C
B
A



Specifications
 Current Rating:2Amp AC/DC
 Voltage Rating:100V AC/DC
 Contact Resistance:10mΩ Max.
 Insulation Resistance:1000MΩ Min.
 Dielectric Withstanding Voltage:800VAC
 Temperature Range:-40°C to +105°C
 Materials
 Contact Material:Brass
 Insulator Material:PA66 UL 94V-0
 All materials must meet GREENCONN hazardous substances control standards.



| CIRCUITS | L | M | CIRCUITS | L | M |
|----------|-------|-------|----------|-------|-------|
| 02 | 6.00 | 2.00 | 10 | 22.00 | 18.00 |
| 03 | 8.00 | 4.00 | 11 | 24.00 | 20.00 |
| 04 | 10.00 | 6.00 | 12 | 26.00 | 22.00 |
| 05 | 12.00 | 8.00 | 13 | 28.00 | 24.00 |
| 06 | 14.00 | 10.00 | 14 | 30.00 | 26.00 |
| 07 | 16.00 | 12.00 | 15 | 32.00 | 28.00 |
| 08 | 18.00 | 14.00 | 16 | 34.00 | 30.00 |
| 09 | 20.00 | 16.00 | | | |

Ordering Information

G WFB123 - XX XX A 001 E X Z X-9B

No. of Pins per Row 02~16 Standard Plating 01=Tin

Color 1=Black 2=White Standard Packing N=PE Bag Standard Packing D=Tape&Reel

格稜股份有限公司
Greenconn Corporation

REV. B UNIT. mm SCALE. 1:1 PAGE. 1/1

| GENERAL TOLERANCE | |
|-------------------|-----------|
| X:± | X.± |
| .X'± | .X±0.25 |
| .XX'± | .XX±0.20 |
| .XXX'± | .XXX±0.10 |

| | |
|-----------|-------|
| DESIGNED: | DATE: |
| CHECKED: | DATE: |
| APPROVED: | DATE: |

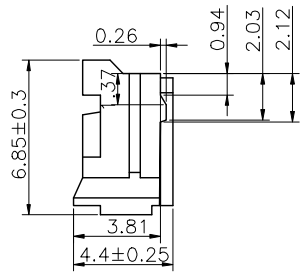
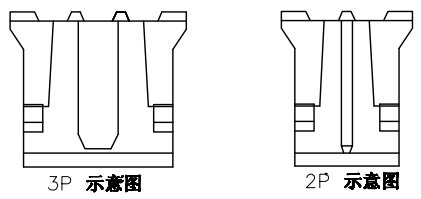
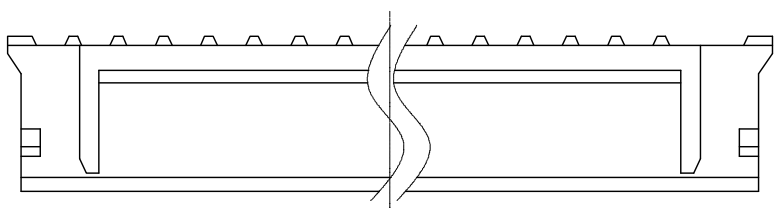
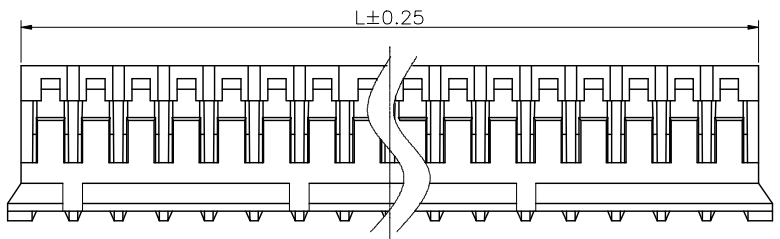
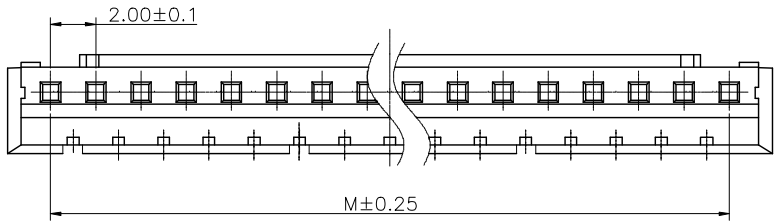
DWG. NO.
 GWFB123-CA1EZ
 PART NO.
 GWFB123-XXXXA001EXZX-9B

TITLE.
 2.0mm pitch 90° DIP type

1 2 3 4 5 6 7 8 9

1 2 3 4 5 6 7 8 9

F
E
D
C
B
A



Specifications
 Voltage rating:100V AC/DC
 Current Rating:2A AC/DC
 Withstanding Voltage:800V AC
 Insulation Resistance:1000MΩ Min.
 Contact Resistance:20mΩ Max.
 After environmental testing: ≤20mΩ
 Operating Temperature:-25°C to +85°C
 Materials
 Insulator Material:PA66 94V-0
 All materials must meet GREENCONN
 hazardous substances control standards.

| Pins | Dimensions(mm) | |
|------|----------------|-------|
| | M | L |
| 2 | 2.00 | 4.60 |
| 3 | 4.00 | 6.60 |
| 4 | 6.00 | 8.60 |
| 5 | 8.00 | 10.60 |
| 6 | 10.00 | 12.60 |
| 7 | 12.00 | 14.60 |
| 8 | 14.00 | 16.60 |
| 9 | 16.00 | 18.60 |
| 10 | 18.00 | 20.60 |
| 11 | 20.00 | 22.60 |
| 12 | 22.00 | 24.60 |
| 13 | 24.00 | 26.60 |
| 14 | 26.00 | 28.60 |
| 15 | 28.00 | 30.60 |
| 16 | 30.00 | 32.60 |

Ordering Information

GWF181 - XX A XX

No. of Pins Materials /Color
 02-16 M=YN66/White
 M1=YN66/Black

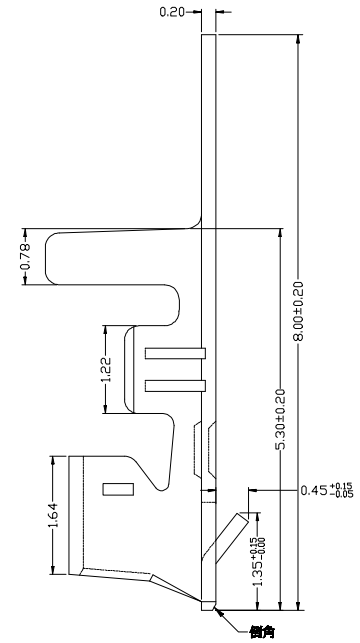
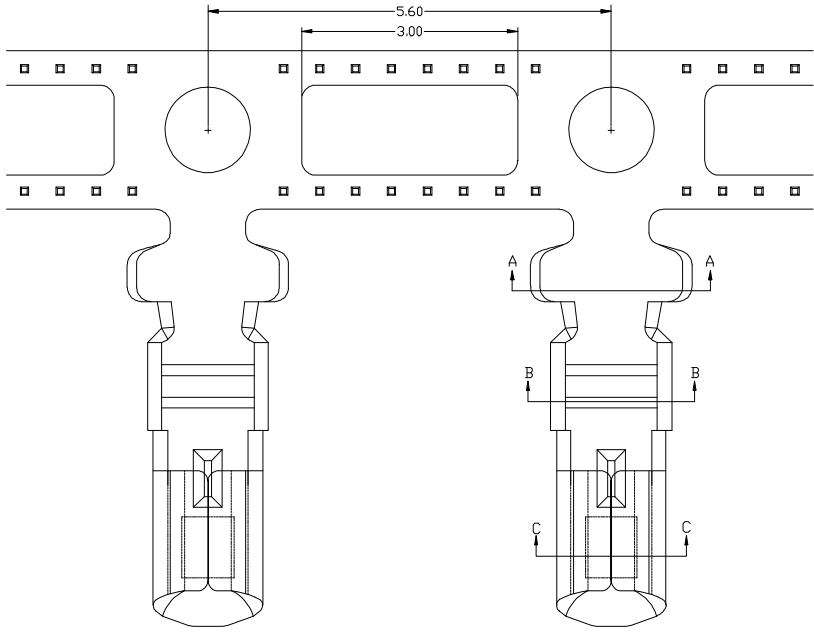
格稜股份有限公司
Greenconn Corporation

| | | | | | | | | | |
|-----------|-------------|---------------|--------------|-------------------|-----------|-----------|-------|--------------------------|-----------------------------|
| REV. A | UNIT. mm | SCALE. 1:1 | PAGE. 1/1 | GENERAL TOLERANCE | | DESIGNED: | DATE: | DWG. NO. GWF181-HA | TITLE. Pitch 2.0 Housing |
| | | | | X.± | X.± | | | | |
| | | | | .X'±2.0' | .X±0.30 | | | | |
| | | | | .XX'±1.0' | .XX±0.20 | CHECKED: | DATE: | PART NO. GWF181-XXAXX | |
| | | | | .XXX'± | .XXX±0.10 | APPROVED: | DATE: | | |

1 2 3 4 5 6 7 8 9

1 2 3 4 5 6 7 8 9

F

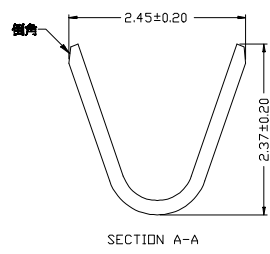


Materials
 Insulator Material: Phosphor Bronze
 Finish: Tin-plated
 wire range: AWG#24-32
 All materials must meet GREENCONN
 hazardous substances control standards.

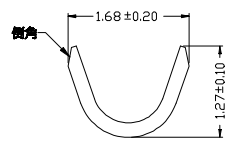
E

D

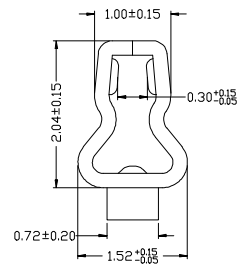
C



SECTION A-A



SECTION B-B



SECTION C-C

Ordering Information

GRF143 - 01 XX XX

Standard Plating
 01= Tin
 02= Gold Flash

Materials
 AB= Phosphor bronze

A

格稜股份有限公司
Greenconn Corporation

| GENERAL TOLERANCE | |
|-------------------|------------|
| X: ± | X, ±/ |
| .X' ± | .X ±0.40 |
| .XX' ± | .XX ±0.35 |
| .XXX' ± | .XXX ±0.15 |

| | |
|-----------|-------|
| DESIGNED: | DATE: |
| CHECKED: | DATE: |
| APPROVED: | DATE: |

| | |
|----------|---------------|
| DWG. NO. | GRF143-T1 |
| PART NO. | GRF143-01XXXX |

| | |
|--------|-------------------------------------|
| TITLE. | Pitch 2.00mm Crimp Style Connectors |
|--------|-------------------------------------|

| | | | | |
|--------|----------|------------|-----------|--|
| REV. B | UNIT. mm | SCALE. 1:1 | PAGE. 1/1 | |
|--------|----------|------------|-----------|--|

1 2 3 4 5 6 7 8 9

F

E

D

C

B

A

X-ON Electronics

Largest Supplier of Electrical and Electronic Components

Click to view similar products for [Headers & Wire Housings](#) category:

Click to view products by [GREENCONN](#) manufacturer:

Other Similar products are found below :

[0015917161](#) [0022155065](#) [57102-F02-18ULF](#) [58102-G61-06LF](#) [582553-1](#) [01.001.5753.1](#) [0050291907](#) [02.125.8002.8](#) [609-3404](#) [61062-3](#)
[CSU011177004](#) [622-0430](#) [622-3653LF](#) [63453-116](#) [636-1030](#) [636-1427](#) [636-3427](#) [636-4007](#) [641938-9](#) [65495-038](#) [65692-001LF](#) [65781-018](#)
[65781-047](#) [65817-010LF](#) [65817-015LF](#) [67095-007LF](#) [67601157](#) [68631-112](#) [68645-018](#) [699319-000](#) [70.362.1628.0](#) [70-4210](#) [70-4226B](#) [70-](#)
[4853B](#) [71.350.2428.0](#) [733-134](#) [733-162](#) [760-3052](#) [MHR-64-VUAL](#) [80.063.4001.1](#) [800-90-001-10-001000](#) [801-43-002-10-013000](#)
[801-43-006-10-002000](#) [803-43-024-10-001000](#) [803-93-012-10-001000](#) [8-1437020-4](#) [819-22-004-30-001101](#) [820-22-006-30-001101](#)
[820-22-008-30-001101](#) [821-22-002-10-001101](#)