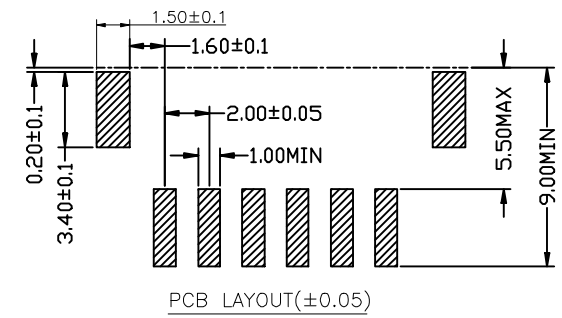
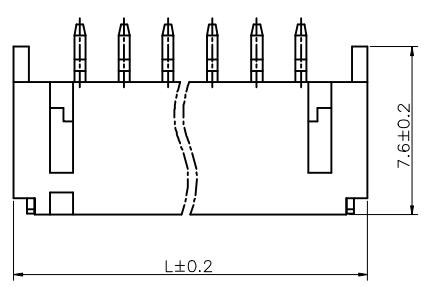
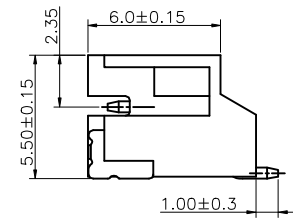
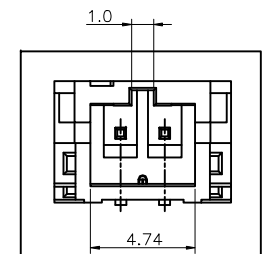
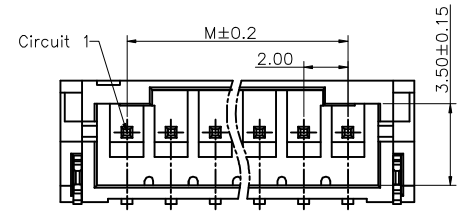


1 2 3 4 5 6 7 8 9

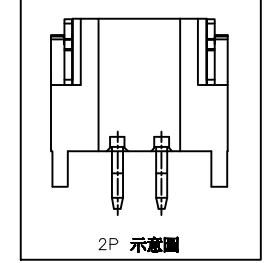
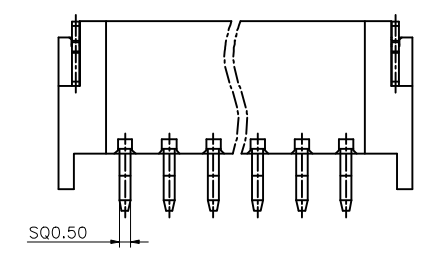
F  
E  
D  
C  
B  
A



Specifications  
 Current Rating:2Amp  
 Voltage Rating:100V AC/DC  
 Insulation Resistance:1000MΩ Min.  
 Dielectric Withstanding Voltage:800VAC  
 Contact Resistance:20mΩ Max.  
 Operating Temperature:-40°C to +105°C  
 Materials  
 Contact Material:Brass  
 Insulator Material:High Temperature Thermoplastic, UL 94V-0 PA6T(Nylon) or the equivalent material  
 All materials must meet GREENCONN hazardous substances control standards.



CIRCUITS	DIM M	DIM L	CIRCUITS	DIM M	DIM L
02	2.00	8.00	10	18.00	24.00
03	4.00	10.00	11	20.00	26.00
04	6.00	12.00	12	22.00	28.00
05	8.00	14.00	13	24.00	30.00
06	10.00	16.00	14	26.00	32.00
07	12.00	18.00	15	28.00	34.00
08	14.00	20.00	16	30.00	36.00
09	16.00	22.00			



### Ordering Information

G WFD101 - XX XX A 003 R X B X  
 No. of Pins per Row 02~16      Standard Plating 01=Tin      Color 2=White      Standard Packing D=Tape&Reel  
 Selective Plating 02=Gold Flash      22=Matte Tin

**格稜股份有限公司**  
**Greenconn Corporation**

REV. 01	UNIT. mm	SCALE. 1:1	PAGE. 1/1	
---------	----------	------------	-----------	--

GENERAL TOLERANCE	
X:±	X.±
.X'±	.X±0.25
.XX'±	.XX±0.15
.XXX'±	.XXX±0.10

DESIGNED:	DATE:
CHECKED:	DATE:
APPROVED:	DATE:

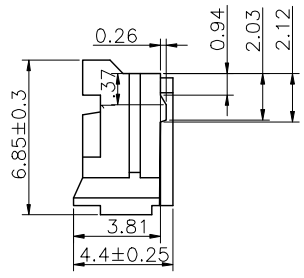
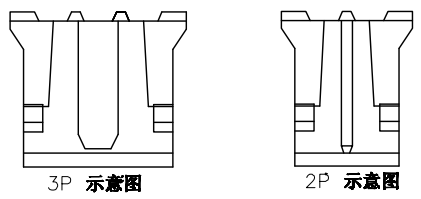
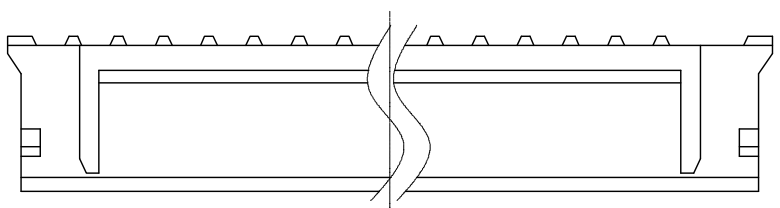
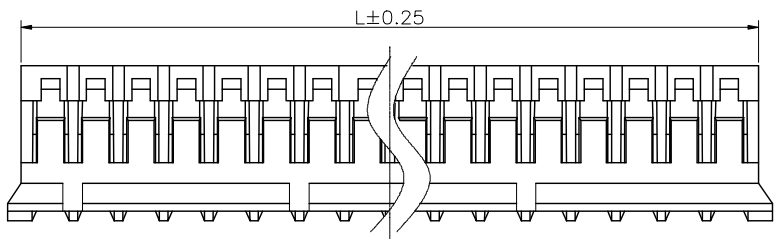
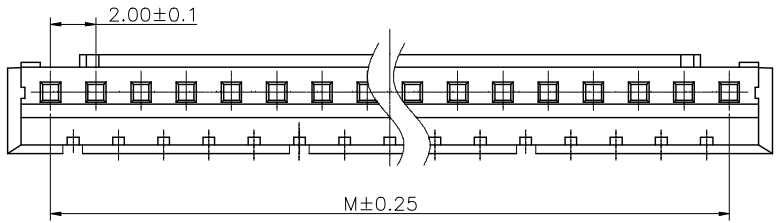
DWG. NO. GWFD101-CA3RB
PART NO. GWFD101-XXXXA003RXXB

TITLE. 2.0mm ptitch 90° wafer
----------------------------------

1 2 3 4 5 6 7 8 9

1 2 3 4 5 6 7 8 9

F  
E  
D  
C  
B  
A



Specifications  
 Voltage rating:100V AC/DC  
 Current Rating:2A AC/DC  
 Withstanding Voltage:800V AC  
 Insulation Resistance:1000MΩ Min.  
 Contact Resistance:20mΩ Max.  
 After environmental testing: ≤20mΩ  
 Operating Temperature:-25°C to +85°C  
 Materials  
 Insulator Material:PA66 94V-0  
 All materials must meet GREENCONN hazardous substances control standards.

Pins	Dimensions(mm)	
	M	L
2	2.00	4.60
3	4.00	6.60
4	6.00	8.60
5	8.00	10.60
6	10.00	12.60
7	12.00	14.60
8	14.00	16.60
9	16.00	18.60
10	18.00	20.60
11	20.00	22.60
12	22.00	24.60
13	24.00	26.60
14	26.00	28.60
15	28.00	30.60
16	30.00	32.60

### Ordering Information

GWF181 - XX A XX

No. of Pins      Materials /Color  
 02-16              M=YN66/White  
                             M1=YN66/Black

格稜股份有限公司  
**Greenconn Corporation**

REV. A	UNIT. mm	SCALE. 1:1	PAGE. 1/1	
--------	----------	------------	-----------	--

GENERAL TOLERANCE	
X.±	X.±
.X'±2.0'	.X±0.30
.XX'±1.0'	.XX±0.20
.XXX'±	.XXX±0.10

DESIGNED:	DATE:
CHECKED:	DATE:
APPROVED:	DATE:

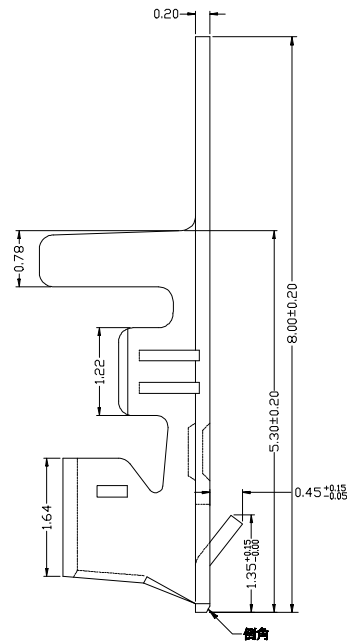
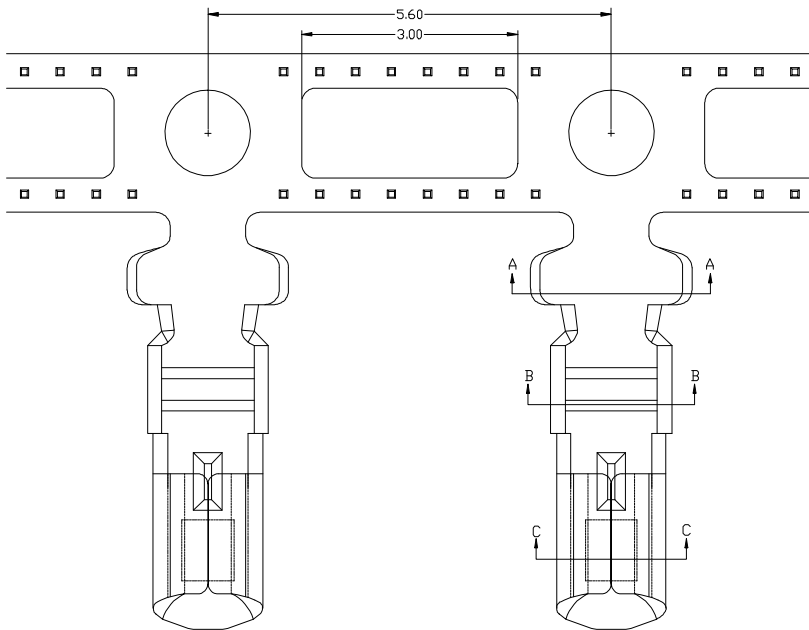
DWG. NO.	GWF181-HA
PART NO.	GWF181-XXAXX

TITLE.	Pitch 2.0 Housing
--------	-------------------

1 2 3 4 5 6 7 8 9

1 2 3 4 5 6 7 8 9

F

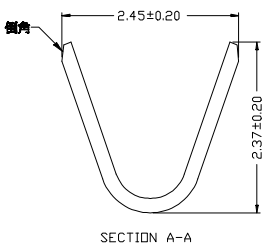


Materials  
 Insulator Material: Phosphor Bronze  
 Finish: Tin-plated  
 wire range: AWG#24-32  
 All materials must meet GREENCONN  
 hazardous substances control standards.

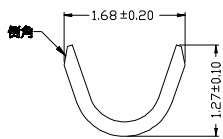
E

D

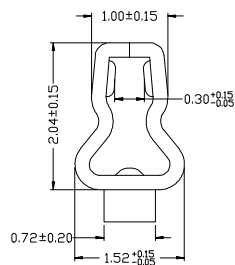
C



SECTION A-A



SECTION B-B



SECTION C-C

## Ordering Information

GRF143 - 01 XX XX

Standard Plating  
 01= Tin  
 02= Gold Flash

Materials  
 AB= Phosphor bronze  
 .....

A

格稜股份有限公司  
**Greenconn Corporation**

GENERAL TOLERANCE

X: ±	X. ± /
.X' ±	.X ± 0.40
.XX' ±	.XX ± 0.35
.XXX' ±	.XXX ± 0.15

DESIGNED:

DATE:

CHECKED:

DATE:

APPROVED:

DATE:

DWG. NO.

GRF143-T1

PART NO.

GRF143-01XXXX

TITLE.

Pitch 2.00mm Crimp Style  
 Connectors

REV.  
B

UNIT.  
mm

SCALE.  
1:1

PAGE.  
1/1



1

2

3

4

5

6

7

8

9

## X-ON Electronics

Largest Supplier of Electrical and Electronic Components

*Click to view similar products for [Headers & Wire Housings](#) category:*

*Click to view products by [GREENCONN](#) manufacturer:*

Other Similar products are found below :

[0015917161](#) [0022155065](#) [57102-F02-18ULF](#) [58102-G61-06LF](#) [582553-1](#) [01.001.5753.1](#) [0050291907](#) [02.125.8002.8](#) [609-3404](#) [61062-3](#)  
[CSU011177004](#) [622-0430](#) [622-3653LF](#) [63453-116](#) [636-1030](#) [636-1427](#) [636-3427](#) [636-4007](#) [641938-9](#) [65495-038](#) [65692-001LF](#) [65781-018](#)  
[65781-047](#) [65817-010LF](#) [65817-015LF](#) [67095-007LF](#) [67601157](#) [68631-112](#) [68645-018](#) [699319-000](#) [70.362.1628.0](#) [70-4210](#) [70-4226B](#) [70-](#)  
[4853B](#) [71.350.2428.0](#) [733-134](#) [733-162](#) [760-3052](#) [MHR-64-VUAL](#) [80.063.4001.1](#) [800-90-001-10-001000](#) [801-43-002-10-013000](#)  
[801-43-006-10-002000](#) [803-43-024-10-001000](#) [803-93-012-10-001000](#) [8-1437020-4](#) [819-22-004-30-001101](#) [820-22-006-30-001101](#)  
[820-22-008-30-001101](#) [821-22-002-10-001101](#)