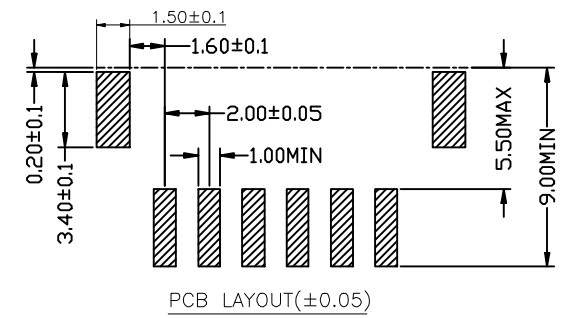
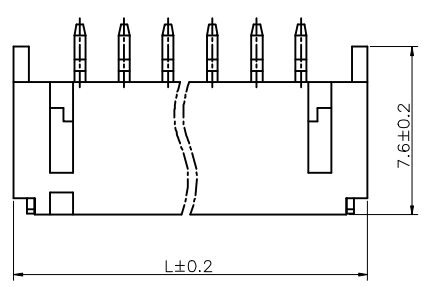
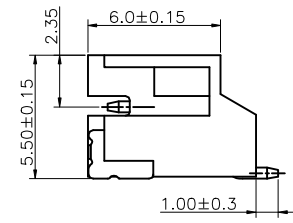
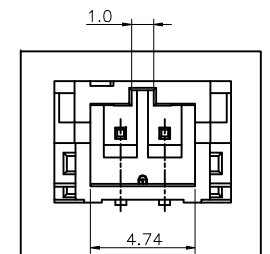
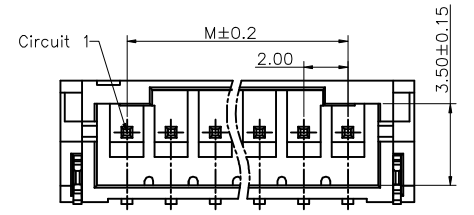


1 2 3 4 5 6 7 8 9

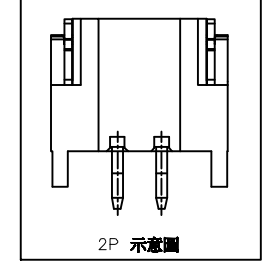
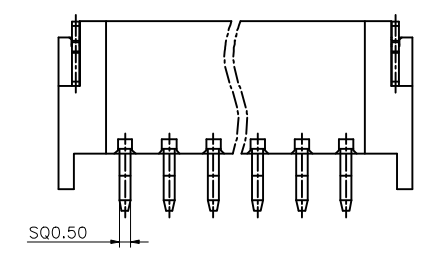
F
E
D
C
B
A



Specifications
 Current Rating:2Amp
 Voltage Rating:100V AC/DC
 Insulation Resistance:1000MΩ Min.
 Dielectric Withstanding Voltage:800VAC
 Contact Resistance:20mΩ Max.
 Operating Temperature:-40°C to +105°C
 Materials
 Contact Material:Brass
 Insulator Material:High Temperature Thermoplastic, UL 94V-0 PA6T(Nylon) or the equivalent material
 All materials must meet GREENCONN hazardous substances control standards.



CIRCUITS	DIM M	DIM L	CIRCUITS	DIM M	DIM L
02	2.00	8.00	10	18.00	24.00
03	4.00	10.00	11	20.00	26.00
04	6.00	12.00	12	22.00	28.00
05	8.00	14.00	13	24.00	30.00
06	10.00	16.00	14	26.00	32.00
07	12.00	18.00	15	28.00	34.00
08	14.00	20.00	16	30.00	36.00
09	16.00	22.00			



Ordering Information

G WFD101 - XX XX A 003 R X B X

No. of Pins per Row 02~16 Standard Plating 01=Tin Color 2=White Standard Packing D=Tape&Reel

Selective Plating 02=Gold Flash 22=Matte Tin

格稜股份有限公司
Greenconn Corporation

REV. 01	UNIT. mm	SCALE. 1:1	PAGE. 1/1	
---------	----------	------------	-----------	--

GENERAL TOLERANCE	
X:±	X.±
.X'±	.X±0.25
.XX'±	.XX±0.15
.XXX'±	.XXX±0.10

DESIGNED:	DATE:
CHECKED:	DATE:
APPROVED:	DATE:

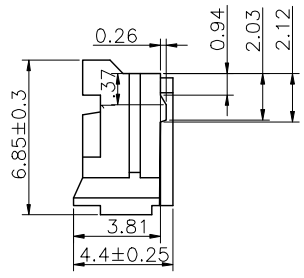
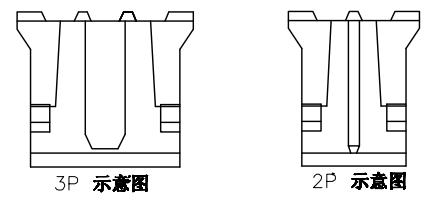
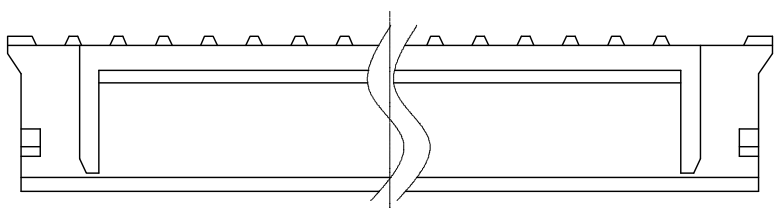
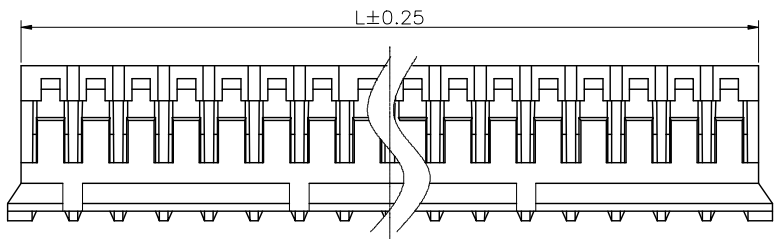
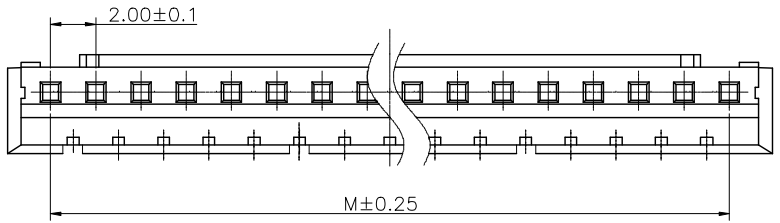
DWG. NO. GWFD101-CA3RB
PART NO. GWFD101-XXXXA003RXXB

TITLE. 2.0mm pitch 90° wafer

1 2 3 4 5 6 7 8 9

1 2 3 4 5 6 7 8 9

F
E
D
C
B
A



Specifications
 Voltage rating:100V AC/DC
 Current Rating:2A AC/DC
 Withstanding Voltage:800V AC
 Insulation Resistance:1000MΩ Min.
 Contact Resistance:20mΩ Max.
 After environmental testing: ≤20mΩ
 Operating Temperature:-25°C to +85°C
 Materials
 Insulator Material:PA66 94V-0
 All materials must meet GREENCONN hazardous substances control standards.

Pins	Dimensions(mm)	
	M	L
2	2.00	4.60
3	4.00	6.60
4	6.00	8.60
5	8.00	10.60
6	10.00	12.60
7	12.00	14.60
8	14.00	16.60
9	16.00	18.60
10	18.00	20.60
11	20.00	22.60
12	22.00	24.60
13	24.00	26.60
14	26.00	28.60
15	28.00	30.60
16	30.00	32.60

Ordering Information

GWF181 - XX A XX

No. of Pins Materials /Color
 02-16 M=YN66/White
 M1=YN66/Black

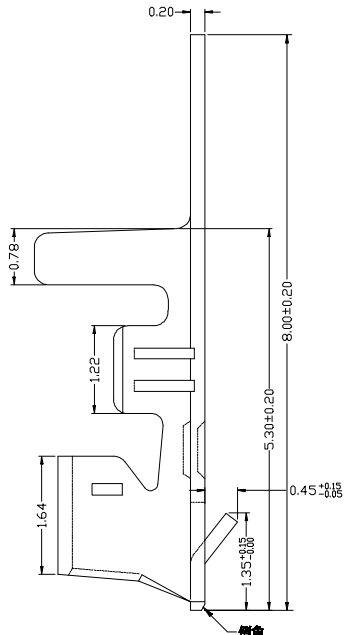
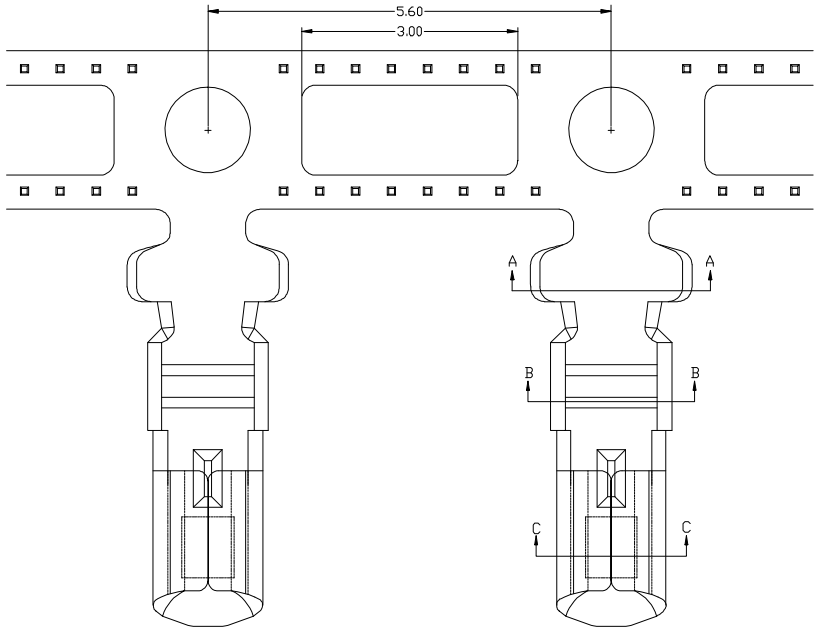
格稜股份有限公司
Greenconn Corporation

REV. A	UNIT. mm	SCALE. 1:1	PAGE. 1/1	GENERAL TOLERANCE		DESIGNED:	DATE:	DWG. NO. GWF181-HA	TITLE. Pitch 2.0 Housing
				X.±	X.±				
				.X'±2.0'	.X±0.30				
				.XX'±1.0'	.XX±0.20	CHECKED:	DATE:	PART NO. GWF181-XXAXX	
				.XXX'±	.XXX±0.10	APPROVED:	DATE:		

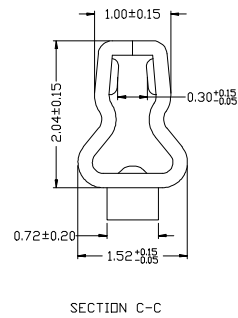
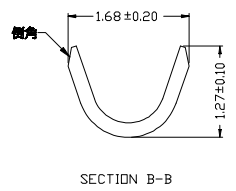
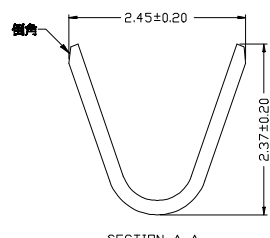
1 2 3 4 5 6 7 8 9

1 2 3 4 5 6 7 8 9

F
E
D
C
B
A



Materials
Insulator Material: Phosphor Bronze
Finish: Tin-plated
wire range: AWG#24-32
All materials must meet GREENCONN
hazardous substances control standards.



Ordering Information

GRF143 - 01 XX XX

Standard Plating
01= Tin
02= Gold Flash

Materials
AB= Phosphor bronze
.....

格稜股份有限公司
Greenconn Corporation

GENERAL TOLERANCE	
X: ±	X, ±/
.X' ±	.X ±0.40
.XX' ±	.XX ±0.35
.XXX' ±	.XXX ±0.15

DESIGNED:	DATE:
CHECKED:	DATE:
APPROVED:	DATE:

DWG. NO.	GRF143-T1
PART NO.	GRF143-01XXXX

TITLE.	Pitch 2.00mm Crimp Style Connectors
--------	-------------------------------------

REV. B	UNIT. mm	SCALE. 1:1	PAGE. 1/1	
--------	----------	------------	-----------	--

1 2 3 4 5 6 7 8 9

X-ON Electronics

Largest Supplier of Electrical and Electronic Components

Click to view similar products for [Headers & Wire Housings](#) category:

Click to view products by [GREENCONN](#) manufacturer:

Other Similar products are found below :

[0015917161](#) [0022155065](#) [57102-F02-18ULF](#) [58102-G61-06LF](#) [582553-1](#) [01.001.5753.1](#) [0050291907](#) [02.125.8002.8](#) [609-3404](#) [61062-3](#)
[CSU011177004](#) [622-0430](#) [622-3653LF](#) [63453-116](#) [636-1030](#) [636-1427](#) [636-3427](#) [636-4007](#) [641938-9](#) [65495-038](#) [65692-001LF](#) [65781-018](#)
[65781-047](#) [65817-010LF](#) [65817-015LF](#) [67095-007LF](#) [67601157](#) [68631-112](#) [68645-018](#) [699319-000](#) [70.362.1628.0](#) [70-4210](#) [70-4226B](#) [70-](#)
[4853B](#) [71.350.2428.0](#) [733-134](#) [733-162](#) [760-3052](#) [MHR-64-VUAL](#) [80.063.4001.1](#) [800-90-001-10-001000](#) [801-43-002-10-013000](#)
[801-43-006-10-002000](#) [803-43-024-10-001000](#) [803-93-012-10-001000](#) [8-1437020-4](#) [819-22-004-30-001101](#) [820-22-006-30-001101](#)
[820-22-008-30-001101](#) [821-22-002-10-001101](#)