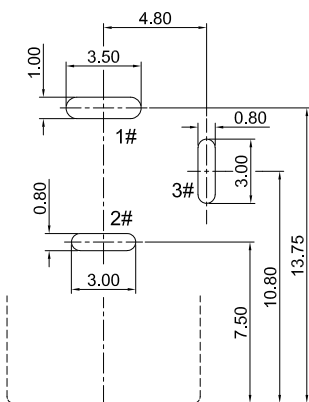


**DC-005H-D020**

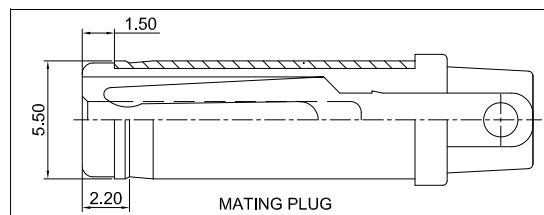
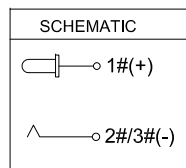
DC Power jack

G-Switch P/N:

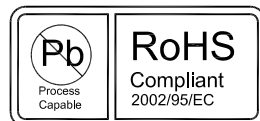
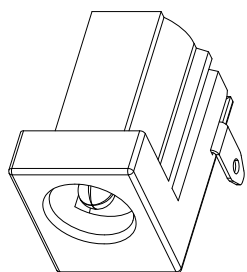
D:needle diameter  
D020=2.0mm



RECOMMENDED PCB LAYOUT  
TOP VIEW TOLERANCE:±0.05



**G-Switch Specification:**  
 Operating temperature range: -40°C to +85°C  
 Rating: 7.0A.35V DC  
 Insulation resistance: 100MΩ min. 100V DC  
 Dielectric strength: 500V AC for 1 min  
 Contact resistance: 30m Ω max.  
 Life: 5,000 Cycles



**G-Switch Electronic (HongKong) CO.,Ltd.**

Unless otherwise specified, Tolerance: X. ±0.30 X.x ±0.20 X.xx ±0.15 X.xxx ±0.10 Angles ±3°	DESIGN 陈锋枫	DATE 2022.07.29	TITLE:	
	CHECKED	DATE	DC-005H-D020	
	APPROVED	DATE	REV.: X1	SCALE: 4:1
	http://www.dg-switch.com		UNIT: mm	
TEL:0769-82388879		SIZE: A4	SHEET: 1/1	

C	SPRING	COPPER ALLOY	Sn80u"/Ni 40u"	1
B	CENTER PIN	BRASS	Sn80u"/Ni 40u"	1
A	HOUSING	PA10T无卤	BLACK	1
NO.	DESCRIPTION	MATERIAL	REMARKS	QTY

## X-ON Electronics

Largest Supplier of Electrical and Electronic Components

*Click to view similar products for [DC Power Connectors](#) category:*

*Click to view products by [G-Switch](#) manufacturer:*

Other Similar products are found below :

[1600206-1](#) [163-0308-EX](#) [163-4012-EX](#) [163-4117-EX](#) [171-0721-EX](#) [KLDX-SMT-0202-BPTR](#) [163-1000-EX](#) [163-4007-EX](#) [163-4015-EX](#)  
[171-0722-E](#) [171-7391](#) [K596](#) [KLD-0201-BC](#) [4C6831AX](#) [TS3PNJ](#) [E16550-0008](#) [DC PLUG-P1J-P1MR](#) [DC PLUG-P1M-P1MR](#) [DC-005-D020](#) [HC-DC-005-2.5M](#) [KH-DC-044-2.5](#) [DC-005H-D020](#) [DC-005H-D025](#) [09441 AS120-F](#) [09442 AS120-M](#) [09759](#) [09760](#) [CP30240](#)  
[TAMIYA-M](#) [TAMIYA-MT1](#) [TAMIYA-MT2](#) [4840.1200](#) [4840.2202](#) [JC-135](#) [JC-210](#) [JC-214](#) [JPO-25 \(FC6814\)](#) [JYO-26 \(FC6811\)](#) [JYO-29 \(FC68102\)](#) [KLB 3](#) [KLBM 3](#) [KLBPS 3](#) [KLBR 4](#) [KLS 10 SCHWARZ](#) [KPJXHT-4S](#) [DC-10A FC68148](#) [DC-10B \(FC68149\)](#) [WKLS 2](#)  
[FA67555](#) [XNES/J 210 SCHWARZ](#)