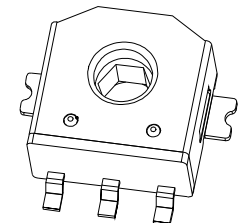
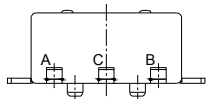
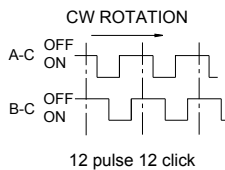
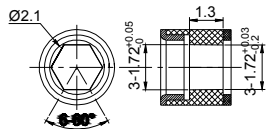


Circuit Board Welding Diagram

Shaft hole Diagram



Material list

Items	Name	Material
1	Cover	Copper Alloy
2	Wheel gear	Engineering plastics
3	Base	Engineering plastics
4	Contact Spring	Copper Alloy
5	Terminal	Copper Alloy

No	Items	Standard	No	Items	Standard
1(1.2)	Operating Temperature Range	-40°C to +85°C	19(7.1)	Mechanical Life	100,000 cycles(30 t/min,Torque attenuation<30%)
2(1.3)	Operating Relative Humidity	≤85% RH	20(7.2)	Electronics Life	
3(3)	Ratings	DC 5V 0.5mA	21(8.1)	Cold Proof	-40±2°C 96h
4(4.1)	Contact Resistance	200mΩ Max(Initial status)	22(8.2)	Hot Proof	85±2°C 96h
5(4.2)	Insulation Resistance	50MΩ Min	23(8.3)	Moisture Resistance	40±2°C 96h, 90-95%RH 96h
6(4.3)	Dielectric Voltage	AC50V,60s	24(8.4)	Temperature Cycling	-40~85°C, change 5 cycles
7(4.4)	Output Signal Format	C.W. 12pulse/360°,A(A-C),B(B-C)	25(8.5)	Salt Mist	5% NaCl 24h(Cut Surface Exemption)
		C.C.W 12pulse/360°,B(B-C),A(A-C)	26(8.6)	Vulcanization test	5% Na2S 3 minutes(Cut Surface Exemption)
8(4.4)	Phase-Different	T1,T2,T3,T4±3mS			
9(4.5)	Chattering	H1,I3±3mS	1	Solder Foot Width	7.6±0.2
10(4.5)	Bounce	t2±2mS	2	Top height	2.5±0.1
11(5.1)	Detent Points	12detent points,each angle:30°±3°	3	Tip dimensions of pin foot	4.4±0.2
12(5.3)	Rotational Force	5±5gf.cm(initial status)	4	Width of Pin	3-0.6±0.1
13(5.4)	Tooth Intensity Value	/	5	Body thickness	2.7±0.2
14(5.4)	Tooth Sense Consistency	/	6	Flatness	0 ^{+0.05} _{-0.05}
15(5.5)	Axial Swing Strength	1N,60S	7	Square Hole Size	1.73 ^{+0.05} ₀
16(5.6)	Terminal Strength	1N,60S	8	Distance of column	2.4±0.1
17(6.2)	Solder Heat Resistance	SMT Soldering 250°C Max 3S Max, 230°C Min 40S Max	9	Distance of column	3.9±0.1
		Manual Soldering 350°C Max, 3S Max	10	Distance of hole to column	2.7±0.1
18(6.1)	Solder Ability	250°C Max, 3S Max	11	Column Size	0.6 ^{+0.05} ₀

品贊科技®
b-Switch

G-Switch Electronic (HongKong) CO.,Ltd.

Unless otherwise specified, Tolerance: X. ±0.30 X.x ±0.20 X.xx ±0.15 X.xxx ±0.10 Angles ±3°	DESIGN Yvette Chen	DATE 2020.10.20	Molde code:	
	CHECKED	DATE	E6E8-2.7C5-12W15 无齿感	
APPROVED	DATE	REV.: X1		
	http://www.dg-switch.com		SIZE: A4	SHEET: 1/1
	TEL:0769-82388879			

X-ON Electronics

Largest Supplier of Electrical and Electronic Components

Click to view similar products for [Coded Rotary Switches](#) category:

Click to view products by [G-Switch](#) manufacturer:

Other Similar products are found below :

[PT65503RT](#) [P60AS703](#) [P60A703](#) [P65THR101L254](#) [RTE16](#) [LFTSVTPL](#) [13613](#) [RTAP31S12WFLSP](#) [01-1104](#) [01-1123](#) [01-1234](#) [01-1263](#)
[01-1424](#) [01-1433](#) [07-3153](#) [07-3154](#) [CRD10CM0SBR](#) [DRS4116](#) [RTE1600R44](#) [ERD110RSZ](#) [ERD116CSZ](#) [ERD116RFZ](#) [ERD716M06Z](#)
[94HCB16RAT](#) [94HCB10T](#) [94HBB16WT](#) [94HBB16RAT](#) [94HBB10WT](#) [94HBB10RAT](#) [94HBB08RAT](#) [94HAC10T](#) [94HAB16WT](#)
[94HAB16T](#) [94HAB10WT](#) [94HAB10RAT](#) [94HAB08WT](#) [94HAB08RAT](#) [ERD216RSZ](#) [P65SMT101](#) [P65SMT103](#) [P65THR101L254](#)
[P65THR703L254](#) [ND3FR10P](#) [S-4010TA](#) [94HCB16WT](#) [94HCB16T](#) [94HCB10RAT](#) [94HCB08T](#) [94HBB16T](#) [94HBB10T](#) [94HBB08T](#)
[94HAB16RAT](#)