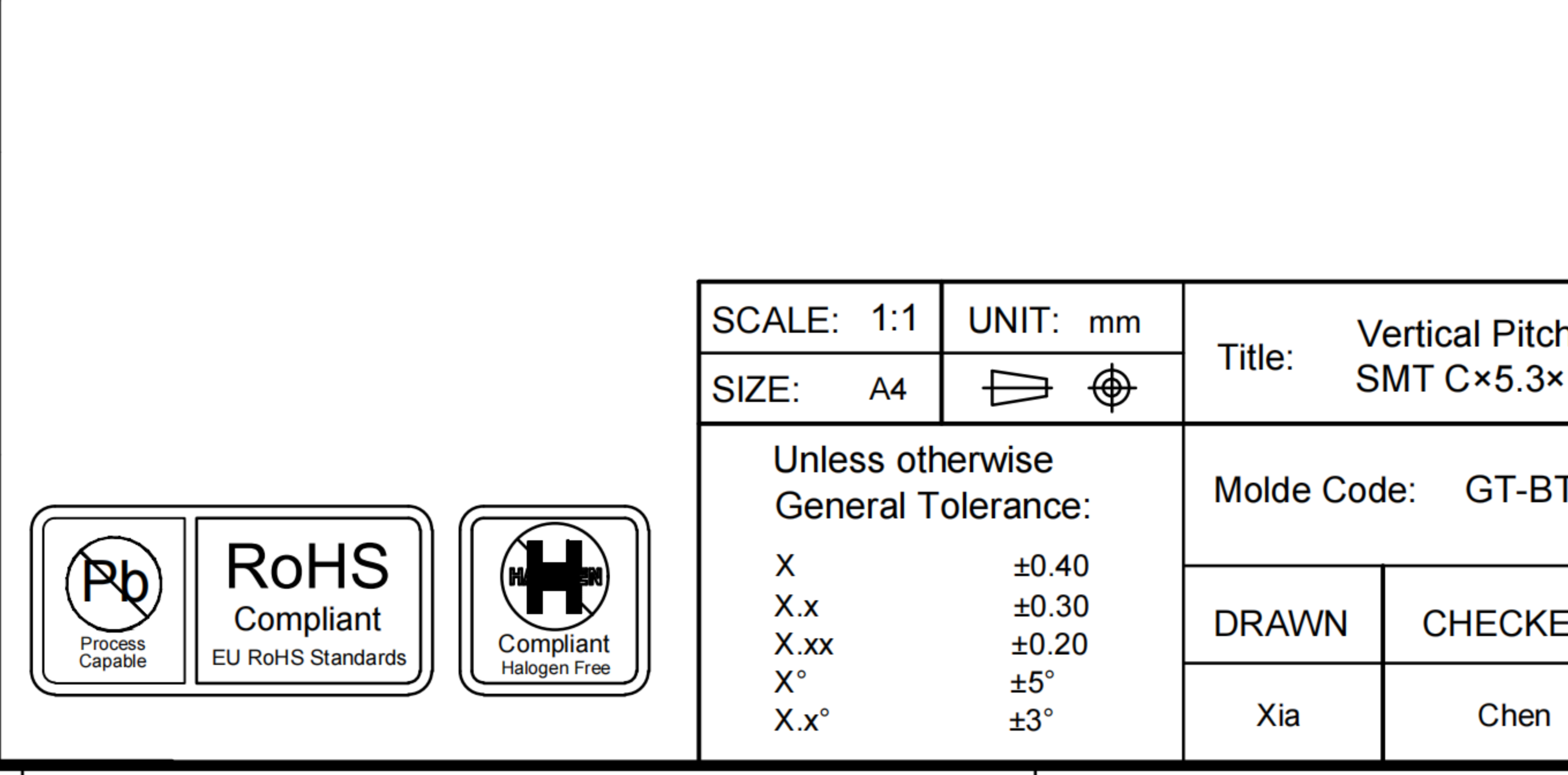


RECOMMENDED PCB LAYOUT
TOLERANCE:±0.05

Ordering Information:

Circuit	DIM A	DIM B	DIM C	DIM D	DIM E	Circuit	DIM A	DIM B	DIM C	DIM D	DIM E
2P	2.4	4.20±0.25	5.00	3.50		4P	4.0	5.80±0.25	10.00	8.50	5.00
	3.0	4.80±0.25					4.5	6.30±0.25			
	3.5	5.30±0.25					5.5	7.30±0.25			
	4.0	5.80±0.25					2.4	4.20±0.25			
	4.5	6.30±0.25									
3P	2.4	4.20±0.25	7.50	6.00	2.50	5P	4.0	5.80±0.25	12.50	11.00	7.50
	3.0	4.80±0.25					4.5	6.30±0.25			
	3.5	5.30±0.25					5.5	7.30±0.25			
	4.0	5.80±0.25					2.4	4.20±0.25			
	4.5	6.30±0.25									
4P	2.4	4.20±0.25	10.00	8.50	5.00	6P	2.4	4.20±0.25	15.00	13.50	10.00
	3.0	4.80±0.25					3.0	4.80±0.25			
	3.5	5.30±0.25					3.5	5.30±0.25			
	4.0	5.80±0.25					4.0	5.80±0.25			
	4.5	6.30±0.25					4.5	6.30±0.25			



GT-BT P 250 XX - XXXX A - 010 A

G-Switch
Series: BT: Battery
Type: P: Plug
Pitch: 250=2.50

Pin Q'PY
02=2Pin
03=3Pin
05=5Pin

Height
0240=2.40
0300=3.00
0350=3.50
0400=4.00
0450=4.50
0550=5.50

Serial code
Detail A: With column
Detail B: No column

G-Switch Specification:

- Current rating: 2A
- Rated Voltage: 12V DC
- Insulation resistance: 500MΩ min
- Contact resistance: 30mΩ max
- Dielectric strength: 500V RMS
- Operating temperature range: -40°C ~ +85°C

NO.	PART NAME	MATERIAL	REMARK
3	FIXED PIECE	COPPER ALLOY	Tin PLATING
2	CONTACT	PHOSPHOR BRONZE	Au ON CONTACT AREA
1	HOUSING	LCP,94V-0	BLACK

SCALE: 1:1	UNIT: mm	Title: Vertical Pitch 2.5 Battery Conn SMT C×5.3×H(A)mm	
SIZE: A4		Title: Vertical Pitch 2.5 Battery Conn SMT C×5.3×H(A)mm	
Unless otherwise General Tolerance:		Molde Code: GT-BTP250XX-XXXXA-010A	
X	±0.40	DRAWN	CHECKED
X.x	±0.30	Xia	Chen
X.xx	±0.20	APPROVED	DATE
X°	±5°	Chen	2023.12.28
X.x°	±3°	REV: A0	SHEET: 1/1

品赞科技

b-Switch
www.dg-switch.com



X-ON Electronics

Largest Supplier of Electrical and Electronic Components

Click to view similar products for [Battery Contacts](#) category:

Click to view products by [G-Switch](#) manufacturer:

Other Similar products are found below :

[3.5MM-UNIVERSAL-CONTACT 009155003001013](#) [RRC-MC21-90-10](#) [1011-1](#) [1010-1](#) [550TR](#) [GT-A1201WRS-110B1101](#) [GT-A1201WRS-107B1101](#) [GT-A1201WRS-105B1101](#) [GT-A1201WRS-103B1101](#) [GT-A1201WRS-104B1101](#) [GT-A1201WRS-102B1101](#) [GT-A1201WRS-106B1101](#) [GT-BTP25003-0550A-010A](#) [GT-BTP25003-0650A-002A](#) [GT-BTP25003-0700A-002A](#) [GT-BTP25003-0450A-010A](#) [GT-BTP25006-0240A-010A](#) [GT-BTP25004-0300A-010A](#) [GT-BTP25005-0300A-010A](#) [GT-BTP25006-0300A-010A](#) [GT-BTP25003-0300A-010A](#) [GT-BTP25002-0240A-010A](#) [GT-BTP25002-0300A-010A](#) [GT-BTP25003-0540A-002A](#) [GT-BTP25002-0350A-010A](#) [GT-BTP25002-0400A-010A](#) [GT-BTP25005-0350A-010A](#) [GT-BTP25005-0400A-010A](#) [GT-BTP25003-0350A-010A](#) [GT-BTP25004-0400A-010A](#) [GT-BTP25004-0240A-010A](#) [GT-BTP25006-0400A-010A](#) [GT-BTP25004-0350A-010A](#) [GT-BTP25003-0400A-010A](#) [GT-BTP25006-0350A-010A](#) [GT-BTP25003-0600A-002A](#) [KH-A01F-H1-A-10P](#) [GT-BTP25006-0550A-010A](#) [GT-BTP25005-0240A-010A](#) [GT-BTP25003-0240A-010A](#) [GT-BTP25004-0450A-010A](#) [GT-BTP25006-0450A-010A](#) [GT-BTP25005-0550A-010A](#) [GT-BTP25005-0450A-010A](#) [GT-BTP25004-0550A-010A](#) [GT-BTP25003-0750A-002A](#) [GT-BTP25003-0800A-002A](#) [KH-A01M-A-M5-10P](#) [47507-0010](#)