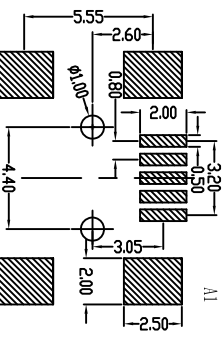
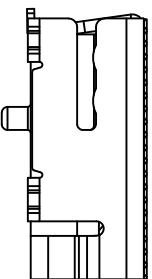
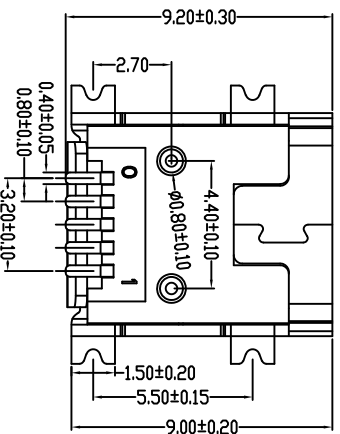
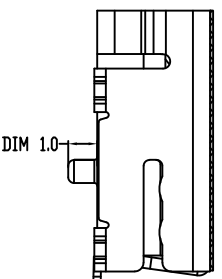
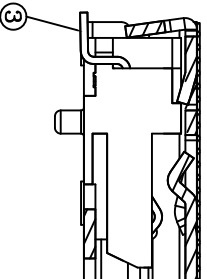
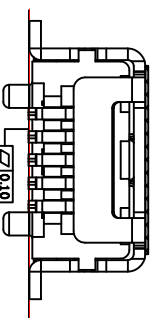


GT-USB-2201

G-Switch
USB系列
系列编码



Recommended PCB Layout



③	CONTACT	5	PHOSPHOR BRONZE	GOLD FLASH/3u"/15u"/30u" T=0.25mm
②	HOUSING	1	LCP	UL94V-0 BK
①	SHELL	1	BRASS/SPCC	NICKE PLATING T=0.40mm
ITEM	PART NAME	Q'TY/PCS	MATERIALS	NOTE



G-Switch Electronic (Hongkong) CO., Ltd.

Unless otherwise specified, Tolerance:
X ±0.30
X.X ±0.20
X.XX ±0.15
X.XXX ±0.10
Angles ±3

DESIGN	陈锋刚	DATE	2016.05.29	TITLE:	GT-USB-2201
CHECKED		DATE		REV:	X1
APPROVED		DATE		SCALE:	4:1
http://www.dg-switch.com				SIZE:	A4
TEL: 0769-82388879				SHEET:	1/1

G-SWITCH SPECIFICATIONS
VOLTAGE RATING: AC 30V
CURRENT RATING: AC 1A CONTACT RESISTANCE
TERMINAL: 30m \varnothing MAX
DIELECTRIC WITHSTANDING VOLTAGE: 100V AC MIN
INSULATION RESISTANCE: 100M \varnothing MIN
INSERTION FORCE: 3.5KGf MAX
EXTRACTION FORCE: 0.7KGf MIN INITIAL
Service life: 5000times above
HOUSING: LCP OR NY6T
CONTACT: PHOSPHOR BRONZE
CONTACT PLATED: GOLD FLASH/3u"/15u"/30u"
SHELL: BRASS/SPCC
SHELL PLATED: NICKEL PLATING
PRODUCT (LEAD FREE) ACCORD WITH ROHS

X-ON Electronics

Largest Supplier of Electrical and Electronic Components

Click to view similar products for [USB Connectors](#) category:

Click to view products by [G-Switch](#) manufacturer:

Other Similar products are found below :

[950](#) [A-USB A-LP-SMT-C](#) [A-USB B-TOP-C](#) [MUSBA511N5](#) [MUSBC111M5](#) [MUSBD11135](#) [17-200721](#) [217450-1](#) [KMBVX-TH-5S-B30](#)
[896-30-004-00-000000](#) [KUSBX-AS2N-W](#) [KUSBX-SMT2AP1S-W30](#) [935](#) [957](#) [30-498-6](#) [SK-60A-2](#) [1734082-1](#) [CIR08F-20](#) [30-1574](#) [30-470](#)
[30-489](#) [30-541](#) [MAB 5 S](#) [A-USB A-2P-C](#) [MIKROE-1451](#) [USBFTV2PEM2G](#) [USBFTVSCCG](#) [4689-1](#) [1-1734084-2](#) [MUSBC11135](#)
[CIR08F-20-27P-F80-VO](#) [USBF21ZNSCC](#) [USBBFTV6ZC](#) [MUSBB151341](#) [10135326-001LF](#) [M9177/3-1](#) [USB-A-S-F-B-VT](#) [4198](#) [690-024-](#)
[633-031](#) [UB-20PMFP-LC7001](#) [USBFTVC6MRG](#) [UA-20BMFA-SL8001](#) [17-200011](#) [USBFTVC7ZC](#) [UB-20AFMM-LL7A01](#)
[USBFTVC2MN](#) [CAP-WCCMLPB1](#) [CAP-WCCMLPC1](#) [1310-1031-01](#) [2041386-1](#)