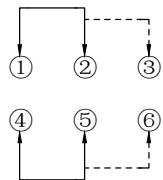
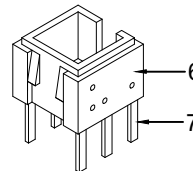
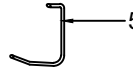
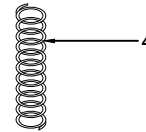
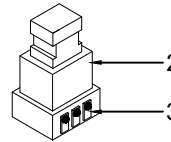
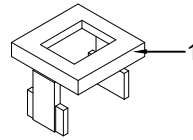
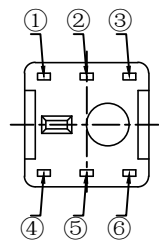


P. C. B LAYOUT



SCHMATIC

**PUSH-ON:**  
2-3,5-6 Conduction  
**PUSH-OFF**  
1-2,4-5 Conduction



**PS-5850DVX-6PN**

**PUSH SWITCH**

**Switch Type**  
58=5.8×5.8mm

**Foot Type**  
D=Dip

**Switch Height**  
50=5.0mm

**Foot Position**  
6P=6pin

**Type**  
D=Different

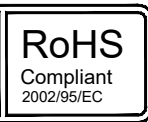
**Operating Force**  
A=180gf  
B=250gf

**Switch Function**  
L=Lock  
N=No Lock

**G-Switch Specification:**

Operating temperature range: -40°C to +85°C  
 Rating: 0.5A.24V DC  
 Insulation resistance: 100MΩ min. 100V DC  
 Dielectric strength: 250V AC for 1 min  
 Contact resistance: 100mΩ max.  
 Switch lifetime: 30,000Cycles

7	TERMINAL	BRASS	6	Ag PLATED
6	CASE	PPA	1	BLACK
5	LOCK PIN	SUS WIRE	1	NATURAL
4	SPRING	SUS WIRE	1	NATURAL
3	CONTACT	BRONZE	2	Ag PLATED
2	KNOB	PPA	1	WHITE
1	COVER	PPA	1	BLACK
NO.	PART NAME	MATERIAL	QTY	FINISHING



**G-Switch Electronic ( HongKong) CO.,Ltd.**

Unless otherwise specified, Tolerance:  
 X. ±0.30  
 X.x ±0.20  
 X.xx ±0.15  
 X.xxx ±0.10  
 Angles ±3°

DESIGN	Feng <sup>2</sup>	DATE	2022.08.12	Molde code:		
CHECKED		DATE		PS-5850DVX-6PN		
APPROVED		DATE		REV.:	X1	SCALE: 4:1
<a href="http://www.dg-switch.com">http://www.dg-switch.com</a>				UNIT:	mm	
TEL:0769-82388879				SIZE:	A4	SHEET: 1/1

## X-ON Electronics

Largest Supplier of Electrical and Electronic Components

*Click to view similar products for [Pushbutton Switches](#) category:*

*Click to view products by [G-Switch](#) manufacturer:*

Other Similar products are found below :

[8971K1133](#) [LW2L-M1C20M-A](#) [M22-D-R-GB0/K11](#) [67021K512](#) [701PB580](#) [7199K101](#) [810K12910](#) [810KSV30B](#) [FLT 2U EE 01A](#)  
[MML21EA2ADK](#) [MML21KA3ABK](#) [MML23KA3AC05K-001](#) [MML23KW3AA01W](#) [8418K2](#) [8442K3](#) [8450K1](#) [860K11911T01A](#) [861901](#)  
[861K11911T01A07](#) [861K13810T00A14](#) [861K13911](#) [8646AB6X718UL](#) [9533CD4+U574+U4922](#) [99-450.837](#) [A2PMA1X03EC56](#) [A3A-7310](#)  
[A3A-7340](#) [12037A2ULCSA](#) [1203A2UL](#) [ABGW410-R](#) [ABN400-R](#) [121382](#) [1213C3](#) [HE3B-M2](#) [121194](#) [1212MRA](#) [1232A6NF](#)  
[1241.1183.7047](#) [121489](#) [1223A2ULCSA](#) [1241.1183.8000](#) [1241.1183.8029](#) [D5P-MT4](#) [13435AG](#) [13445AD29GX768](#) [AG23-L2](#) [AH165-](#)  
[2SGLG1TE3](#) [AH165-TGFY22](#) [AH165-TGL5Y11E3](#) [AH165-TGLR11AA3](#)