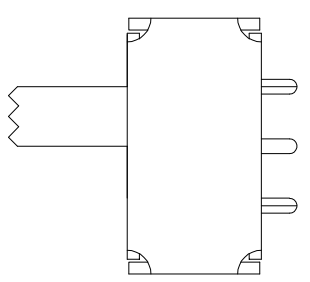


CIRCUIT DIAGRAM

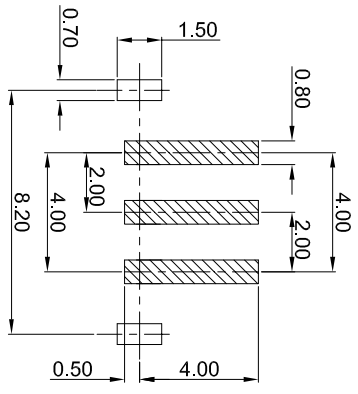
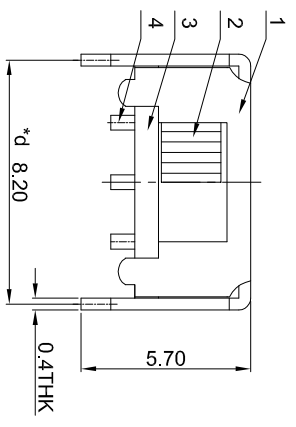
SK-12D15-GXXX

Horizontal

G-Switch P/N



- Switch Height (mm)**
- G020=2.0mm G030=3.0mm
 - G040=4.0mm G050=5.0mm
 - G060=6.0mm G070=7.0mm
 - G080=8.0mm G090=9.0mm
 - G100=10.0mm

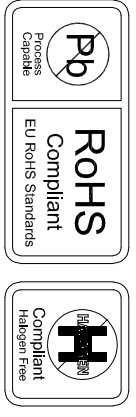


RECOMMENDED PCB LAYOUT
TOLERANCE:±0.05

- G-Switch Specification:**
1. Operating temperature range: -40°C ~ +85°C
 2. Rating: 0.3A, 50V DC
 3. Insulation resistance: 100MΩ min, 100V DC
 4. Dielectric strength: 250V AC for 1 min
 5. Contact resistance: 100m Ω max.
 6. Terminal arrangement: 1P2T
 7. Travel: 2.0±0.1mm
 8. Switch lifetime: 10,000Cycles

Note: "*" represents key dimensions (6)

6	SPRING PLATE	PBS STRIP	1	NATURAL
5	CONTACT CLIP	PBS STRIP	1	Ag CLAD
4	TERMINAL	BRASS STRIP	3	Ag PLATED
3	BASE	PHENOLIC RESIN	1	NATURAL
2	KNOB	PPA	1	BLACK
1	FRAME	STEEL STRIP	1	NI PLATED
NO.	PARTS	MATERIALS	QTY	FINISH



SCALE: 1:1	UNIT: mm	SIZE: A4	UNIT: mm
Unless otherwise General Tolerance:		Title: Horizontal Slide Switch	
X	±0.40	Model Code: SK-12D15-GXXX	
X.X	±0.30	DRAWN	CHECKED
X.XX	±0.20	Xia	Chen
X.X*	±3°	CHEKED	APPROVED
		Chen	Chen
		DATE	2023.02.01



REV: A0 SHEET: 1/1

X-ON Electronics

Largest Supplier of Electrical and Electronic Components

Click to view similar products for [Slide Switches](#) category:

Click to view products by [G-Switch](#) manufacturer:

Other Similar products are found below :

[6-1437581-1](#) [M43R](#) [MHS123K15D](#) [MHS133K](#) [MMD](#) [MSS12A](#) [1825074-1](#) [1825160-3](#) [1825167-2](#) [1825289-7](#) [K232CB](#) [25139NLDB](#)
[25449NAH](#) [SLB1240R45](#) [1825078-1](#) [1825080-4](#) [1825269-1](#) [1825270-2](#) [STS141RA04](#) [T2215BEN506](#) [GH46P000001](#) [GH49P010001](#)
[25339NA](#) [25436NLDH](#) [M42A](#) [AYZ0202AG](#) [L203091MS02Q](#) [4-1437581-7](#) [48BFSP3M2QT](#) [1101M1S3ZB8E2](#) [1-1437581-1](#)
[EG1218REDACTUATOR](#) [MSS42G](#) [T105S1CWZBE](#) [SLB124145](#) [SLB1280R5](#) [TG39W000050](#) [25149NAH](#) [25439NAH](#) [25436NAH6](#)
[TG36Y000050](#) [NK236X693](#) [SL-1211C1B8](#) [46204LRX](#) [1977143-4](#) [1977144-4](#) [HASS0194](#) [JS0001](#) [SSJ12R04](#) [GR5-1323-0800](#)