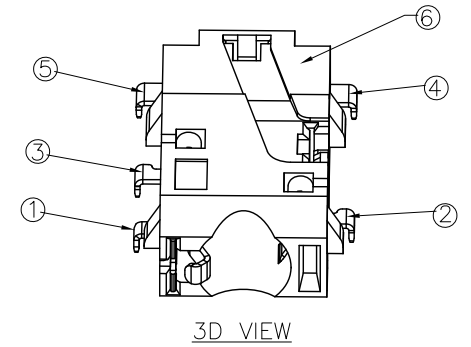
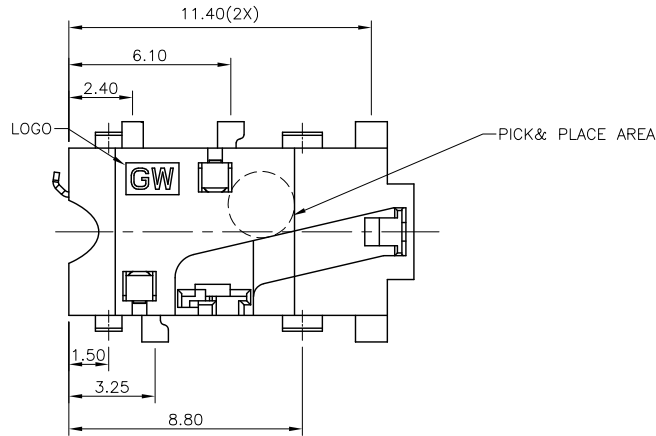
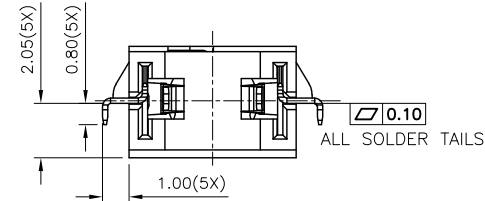
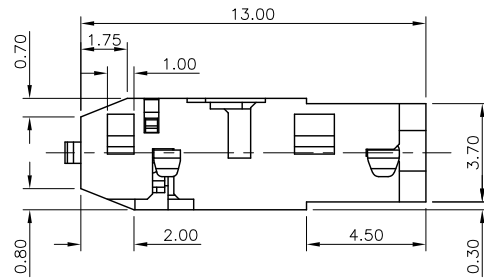
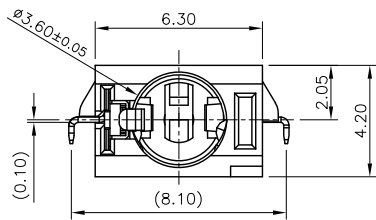


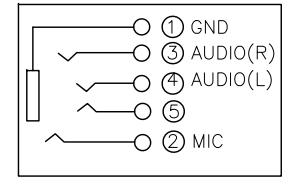
( $\phi 3.50\text{mm}$  4 POLE PLUG DETAIL DRAWING)



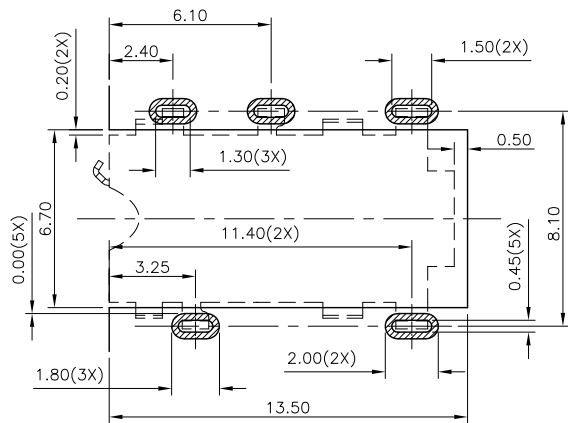
3D VIEW



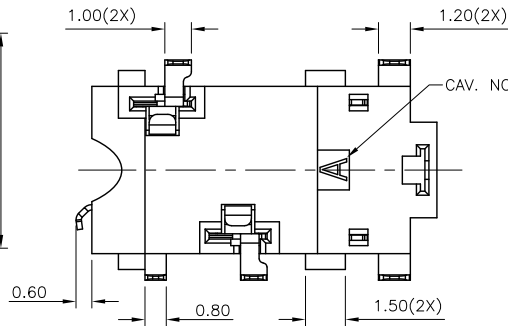
ALL SOLDER TAILS



SCHEMATIC



RECOMMENDED PCB LAYOUT  
TOP VIEW TOL:  $\pm 0.05$



NOTES:

- CONTACT CURRENT RATING: 1A.
- CONTACT RESISTANCE: 50 m $\Omega$  MAX.;
- INSULATION RESISTANCE: 100M $\Omega$  MIN.;
- DIELECTRIC WITHSTANDING: 500V AC MIN.;
- DURABILITY: 5,000 CYCLES MIN.;
- CONNECTOR MATING FORCES: 2.94~29.4N (0.30~3.00Kgf);
- CONNECTOR UNMATING FORCES: 2.94~29.4N (0.30~3.00Kgf);
- PRODUCT MEET THE REQUEST OF THE RoHs, SEE TABLE A:



**G-Switch Electronic (HongKong) CO.,Ltd.**

Unless otherwise specified, Tolerance:  
 X.  $\pm 0.30$   
 X.x  $\pm 0.20$   
 X.xx  $\pm 0.15$   
 X.xxx  $\pm 0.10$   
 Angles  $\pm 3^\circ$

DESIGN Bright Lee	DATE 2016.05.29
CHECKED	DATE
APPROVED	DATE
<a href="http://www.dg-switch.com">http://www.dg-switch.com</a>	
TEL:0769-82388879	

Molde code:		
ST-0277D00-052-142		
REV.: X1	SCALE: 4:1	UNIT: mm
SIZE: A4	SHEET: 1/1	

## X-ON Electronics

Largest Supplier of Electrical and Electronic Components

*Click to view similar products for [HDMI, Displayport & DVI Connectors](#) category:*

*Click to view products by [G-Switch](#) manufacturer:*

Other Similar products are found below :

[30-528](#) [30-504](#) [33DVIR-24S1B](#) [47648-2000](#) [TC142X](#) [1932649-1](#) [HAGBH](#) [AABII](#) [ABIBG](#) [AAIBG](#) [AAIBH](#) [52355](#) [XHLJQ-00026](#) [HDMI-019R](#) [G46M2013201AWEU](#) [ST-0277D00-052-142](#) [HC-PJ-320A-3P-D](#) [HC-PJ-3133-5P-D](#) [PJ-342](#) [141](#) [PJ-320A-4P DIP](#) [HC-PJ-325C-5P](#) [HC-PJ-320D-4P-S](#) [HC-PJ-3133-6P-S](#) [CP30116](#) [LTWDID-29PFFS-SL8001](#) [46765-1301](#) [47271-1004](#) [32-1121-BU](#) [DS1117-BN0-TME-002](#) [MHDR2A11004BP](#) [1903015-3](#) [2002-400](#) [DS1114-BN0](#) [WPUSBAF](#) [47151-1071](#) [1747981-1](#) [472710111](#) [P142-000-UP](#) [P132-08N](#) [P120-08N](#) [P142-000-UD](#) [10029449-101RLF](#) [P132-000](#) [P130-000](#) [P142-06N-MICRO](#) [P142-000-MINI](#) [P120-000](#) [P131-06N](#) [P126-000](#) [P131-000](#)