



## Temperature sensors with a plastic housing

### Series 64-TKG

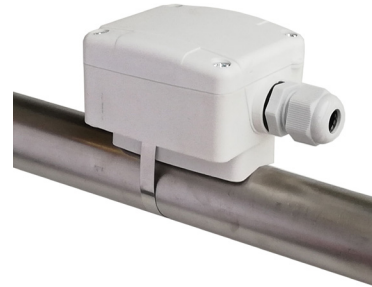
Temperature sensors with a plastic housing are designed for measuring the temperature of air and non-aggressive gases in air conditioning and ventilation systems or surface temperatures of pipes.

Versions for wall mounting, duct mounting and surface pipe mounting are available.

The standard measuring sensors are Pt100 or Pt1000 in a 2- or 3-wire circuit system. It is possible to make probes with other measuring sensors as e.g. Ni1000LG or according to individual arrangements.

The 64-TKG series includes the following constructions:

- Wall-mounted version with an internal sensor
- Wall-mounted version with sensor in the external metal protection tube.
- Duct mounted version.
- Pipe mounted version.



Description	
Type (old)	64-23X00002-TM
Type (new)	64-23601002-0900
Article number	18037150

Temperature sensor with plastic housing for pipe mounting.

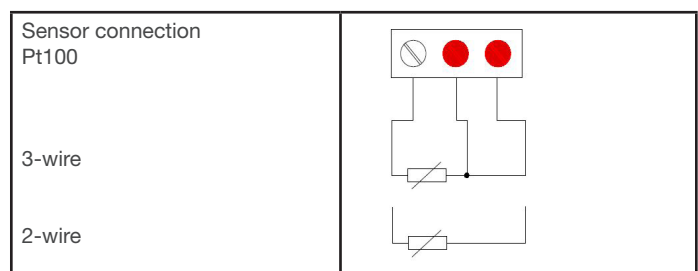
Pt100 measuring sensor placed in a brass cover with spring pressure, ensuring good contact with the measured surface.

Mounting via clamping band with ball lock

### Technical parameters

Sensor	1x Pt100
Circuit connection	2- / 3- wire
Measuring range	-40...+100°C
Accuracy 2-wire connection 3-wire connection	class B acc. to IEC 60751 class A acc. to IEC 60751 range -30...+100°C
Housing dimension	75x69x44mm
Housing material	PA6
Cable gland / outlet	for cable Ø 4...10 mm
IP protection	IP 65
max. pipe diameter	165mm
Clamping band length	900mm

### Terminals, color marking



## X-ON Electronics

Largest Supplier of Electrical and Electronic Components

*Click to view similar products for [Temperature Sensor Modules](#) category:*

*Click to view products by [Guenther](#) manufacturer:*

Other Similar products are found below :

[HPP809A031](#) [MBT 3560-0000-0050-10-110](#) [MBT 3560-0000-0100-10-110](#) [MBT 3560-0001-0050-10-120](#) [MBT 3560-0001-0100-10-120](#)  
[TCN4L-22R](#) [TX4H-14R](#) [TX4H-24R](#) [TX4H-A4R](#) [TX4H-B4R](#) [TX4L-14R](#) [TX4L-A4R](#) [TX4L-B4R](#) [TX4M-14R](#) [TX4M-24R](#) [TX4M-A4R](#)  
[TX4M-B4R](#) [QP99](#) [CP-02](#) [CP82](#) [CP99](#) [R38-LAOO](#) [R38-LARR](#) [72-11304023-0150.0050](#) [72-11304027-0150.0050](#) [72-23304003-](#)  
[0150.0050.GGP](#) [72-23904001-0300.0040.TM](#) [72-34904001-0300.0040.TM](#) [TEM 73 A](#) [AT403-414-1000](#) [AT403-614-1000](#) [AT-503-1141-000](#)  
[AT-503-1161-000](#) [AT-503-6140-000](#) [AT-603-1141-000](#) [AT603-414-1000](#) [AT-903-1161-000](#) [ATR121-AD](#) [ATR121-B](#) [TPMC-5](#) [TPMC-8W](#)  
[K39-HCRR](#) [K39T-HCRR](#) [K49-HCRR](#) [K49P-HCRR](#) [K85-HERR](#) [KR1-LCRR-D](#) [LHI874](#) [LHI944](#) [LHI968](#)