

3-TERMINALS NEGATIVE VOLTAGE REGULATOR

SERIES 79L05

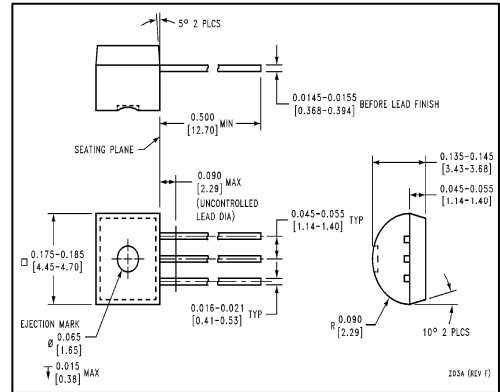
DESCRIPTION

The 79L05 family is monolithic fixed voltage regulator integrated circuit. They are suitable for applications that required supply current up to 100mA.

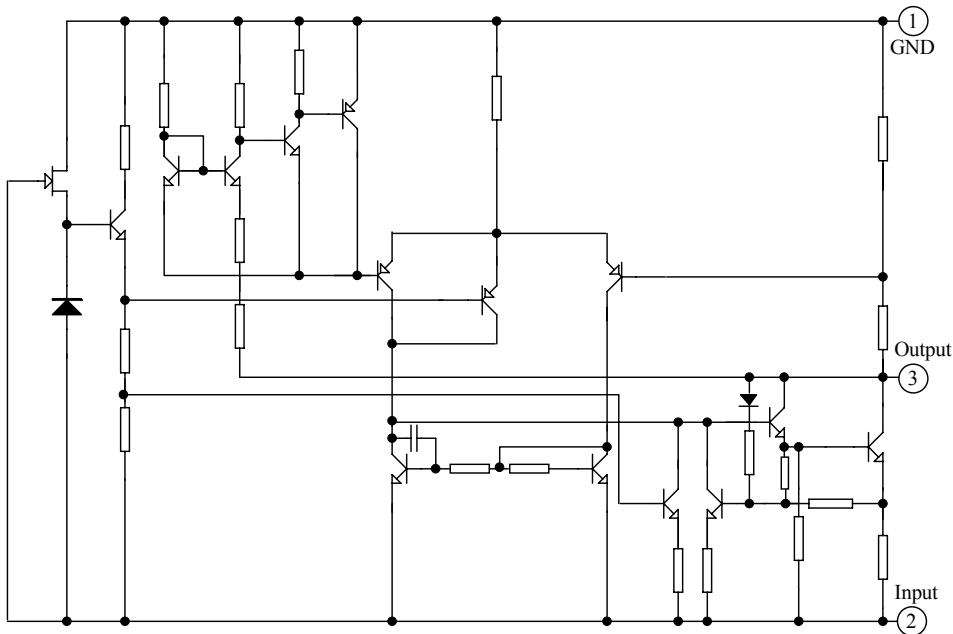
FEATURE

- Output current to 100mA
- Fixed output voltage of $-5V$ available.
- Thermal overload shutdown protection
- Short circuit current limiting.

Outline Drawing



EQUIVALENT CIRCUIT



ABSOLUTE MAXIMUM RATINGS (Ta=25°C)

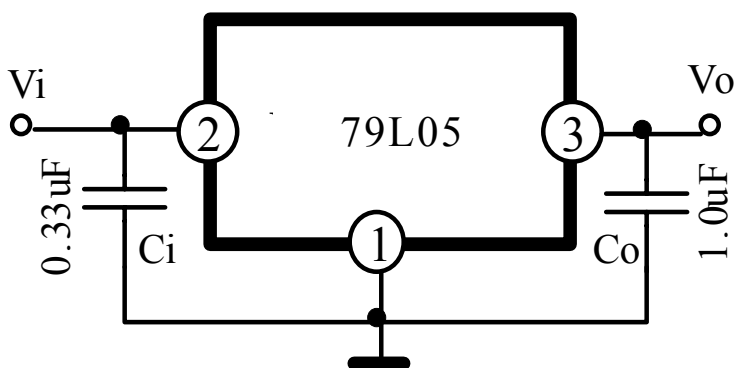
Characteristic		Symbol	Value	Unit
Input voltage	Vo=-5V~-9V	Vi	-30	V
Power Dissipation		PD	500	mW
Operating Junction Temperature Range		Topr	-20~75	°C
Storage Temperature		Tstg	-40~150	°C

ELECTRICAL CHARACTERISTICS

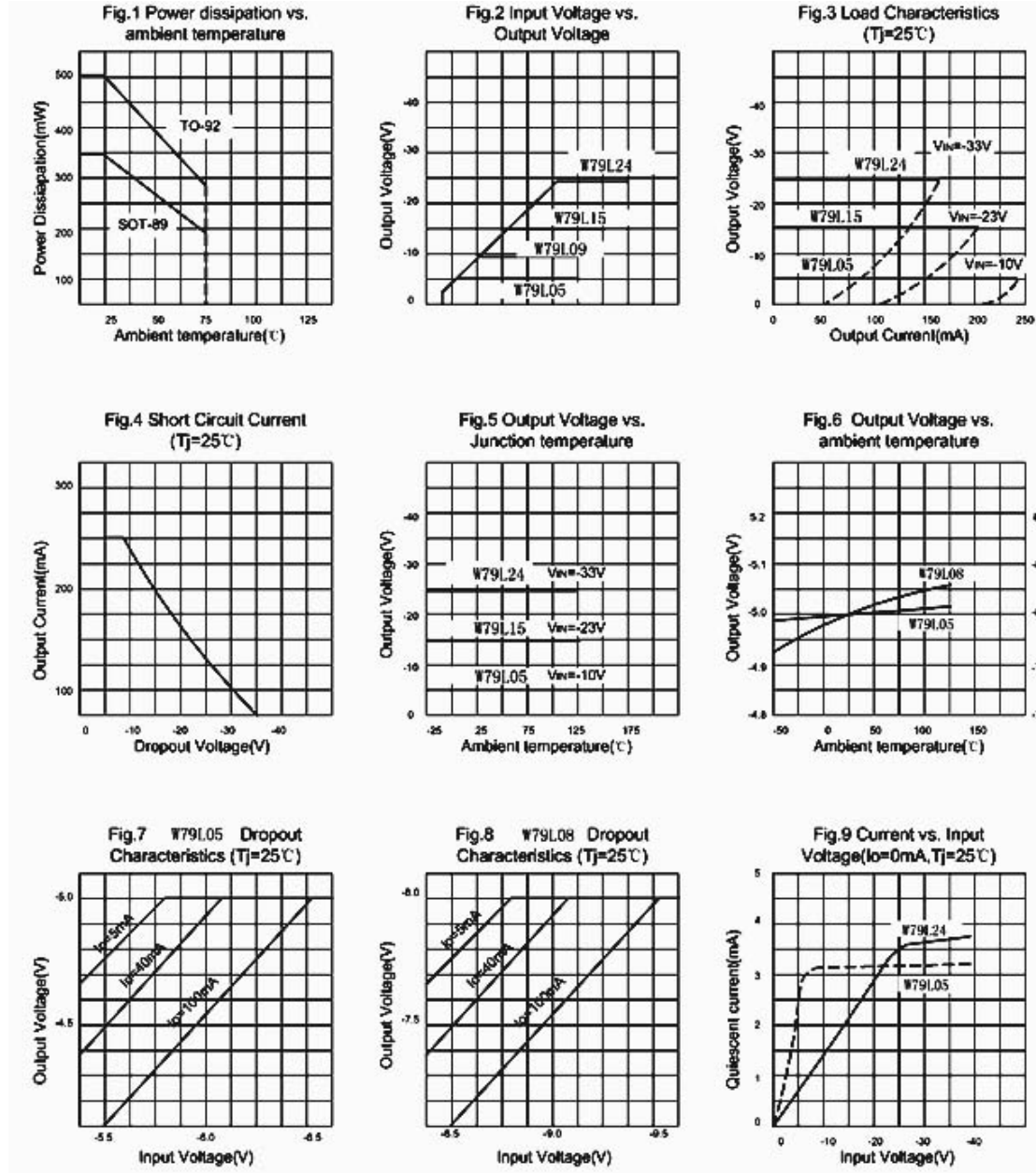
(unless otherwise specified: Tj=25°C, Ci=0.33μF, Co=1.0μF)

Characteristics	Test conditions	Symbol	Min.	Typ.	Max.	Unit
Output Voltage	Vin=-10V, Io=40mA	Vo	-4.8	-5.0	-5.2	V
Line Regulation	Vin=-7V~-20V, Io=40mA	Vo-Vin		15	150	mV
Load Regulation	Vin=-10V, Io=1mA~100mA	Vo-Io		7	60	mV
Quiescent Current	Vin=-10V, Io=40mA	Iq		3.5	6.0	mA
Quiescent Current Change	Io=1mA~40mA	Δ Iq		0.	0.3	mA
	Io=1mA~100mA				0.1	mA
	-20V ≤ VIN ≤ -7.5V				1.5	mA
Ripple Rejection	Vin=-8V~-18V, Io=40mA, ein=1Vp-p, f=120Hz	RR	41	71		dB
Output Noise Voltage	Vin=-10V, Io=40mA, BW=10Hz~100kHz,	VNO		120		μV

TYPICAL APPLICATION CIRCUIT



CHARACTERISTIC CURVES



X-ON Electronics

Largest Supplier of Electrical and Electronic Components

Click to view similar products for [Linear Voltage Regulators](#) category:

Click to view products by [GUOXIN JIAPIN SEMICONDUCTOR](#) manufacturer:

Other Similar products are found below :

[LV56831P-E](#) [LV5684PVD-XH](#) [MCDTSA6-2R](#) [L7815ACV-DG](#) [PQ3DZ53U](#) [LV56801P-E](#) [TLE42794G](#) [L78L05CZ/1SX](#) [L78LR05DL-MA-E](#) [636416C](#) [714954EB](#) [BA033LBSG2-TR](#) [LV5680P-E](#) [L78M15CV-DG](#) [L79M05T-E](#) [TLS202A1MBVHTSA1](#) [L78LR05D-MA-E](#) [NCV317MBTG](#) [NTE7227](#) [LV5680NPVC-XH](#) [LT1054CN8](#) [MP2018GZD-5-Z](#) [MP2018GZD-33-Z](#) [MIC5281-3.3YMM](#) [MC78L06BP-AP](#) [TA48LS05F\(TE85L,F\)](#) [TA78L12F\(TE12L,F\)](#) [TC47BR5003ECT](#) [TCR2LN12,LF\(S](#) [TCR2LN28,LF\(S](#) [TCR2LN30,LF\(S](#) [TCR3DF295,LM\(CT](#) [TCR3DF40,LM\(CT](#) [BA178M20CP-E2](#) [L78M12ABDT](#) [LM7812SX/NOPB](#) [LR645N3-G-P003](#) [LR645N3-G-P013](#) [ZXTR2005P5-13](#) [SCD7812BTG](#) [TCR3DF335,LM\(CT](#) [ZXTR2012K-13](#) [TLE42994E V33](#) [ZXTR2008K-13](#) [ZXTR2005K-13](#) [L88R05DL-E](#) [ADP3300ARTZ-2.7RL7](#) [LM120K-15/883](#) [IFX54441LDVXUMA1](#) [LM317D2T-TR](#)