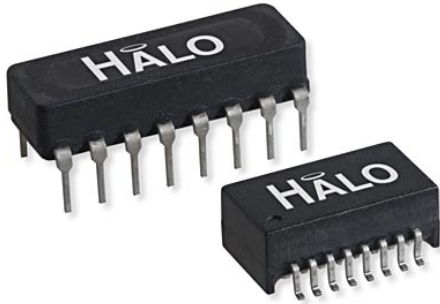


Triad CMC Filters

16 Pin DIP and SMD Packages



Product Features:

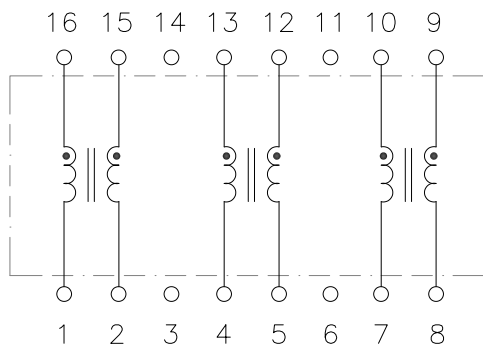
- Standard series of 16 pin triad CMC filters for Data Communications and Telecom applications.
- Compatible with IEEE 802.3 and 802.5.
- Operating Temp -40 to +85°C
- Hi Pot: 500Vrms
- Turns Ratio ($\pm 3\%$): 1:1
- UL recognized materials

Part Number	Package	OCL (μH typ.)	LL (μH max.)	Cw/w (pF max.)	DCR (Ω max.)	Impedance/Freq. Curve (typ.)
LD01-0506KRL	DIP	50	0.10	8	0.15	A
LD01-0756KRL	DIP	75	0.13	10	0.17	B
LD01-1006KRL	DIP	100	0.15	12	0.20	C
LG01-0506NLF	SMD	50	0.10	8	0.15	A
LG01-0756NLF	SMD	75	0.10	8	0.17	B
LG01-1006NLF	SMD	100	0.10	10	0.20	C

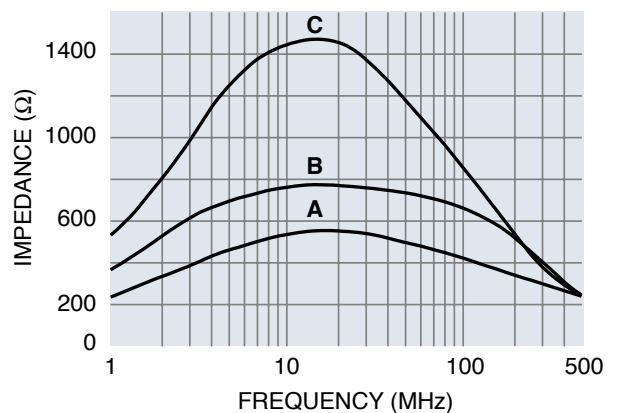
Notes:

1. DIP (through-hole) packages are not recommended for new designs
2. Part numbers with LF suffix are RoHS compliant and PB-Free. Part numbers with RL suffix are RoHS compliant using exemption 7a.

Schematic

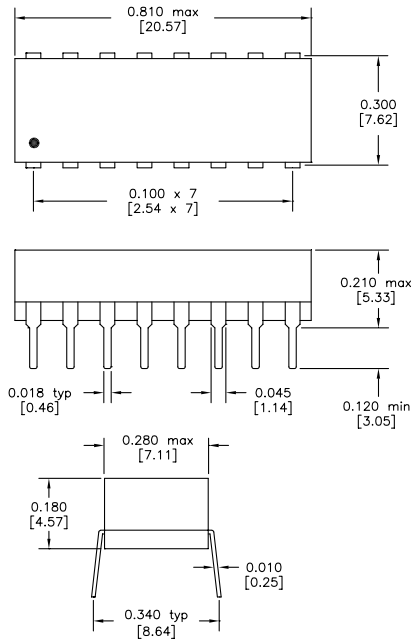


Impedance/Freq. Curve



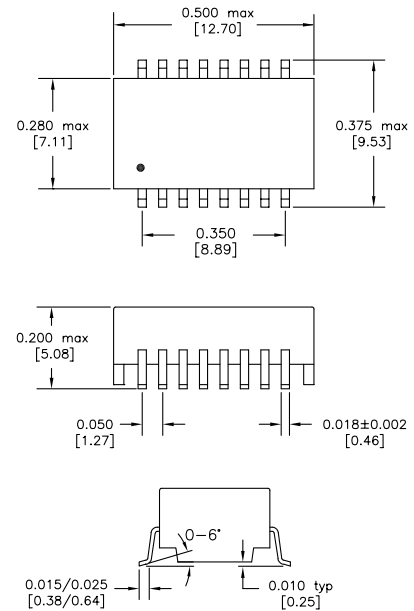
Triad CMC Filters

DIP Package (K)

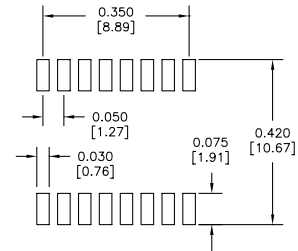


Dimensions: inches [mm]

SMD Package (N)



Dimensions: inches [mm]
Co-Planarity: 0.004 [0.10]



Recommended
Solder Pad Dimensions

US Patent Numbers for SMD Devices
 5,656,985 6,297,721 B1
 6,297,720 B1 6,320,489 B1
 6,344,785 B1 6,662,431 B1



2880 Lakeside Drive #116
 Santa Clara, CA 95054
 (650) 903-3800
www.haloelectronics.com

HALO® Electronics is a leading supplier of high quality communication magnetics including signal transformers, filters, CMR chokes, PoE power transformers, DC/DC converters, and integrated Ethernet connectors. HALO's leading edge technology solutions are manufactured in ISO9001 and ISO14001 factories offering high quality products at a competitive price.

X-ON Electronics

Largest Supplier of Electrical and Electronic Components

Click to view similar products for [Common Mode Chokes / Filters](#) category:

Click to view products by [HALO](#) manufacturer:

Other Similar products are found below :

[74279408](#) [PE-62911NL](#) [PE-64683](#) [ST6118T-R](#) [T8114NLT](#) [RD5122-10-6M0](#) [TCM0806G-350-2P-T](#) [TCM0806G-650-2P-T](#) [IND-0110](#)
[UAL21V07012500](#) [UALSC023000000](#) [UALSC1520JH000](#) [UALSU16VD40010](#) [UALSU9H0305000](#) [UALSU9HF060300](#)
[UALSU9VD070100](#) [36-00037](#) [5701610000](#) [UALW21HS072450](#) [UALSU9VD070400](#) [UALSU9HF050500](#) [UALSU9H0208000](#)
[UALSCF25081300](#) [UAL24VK06450CH](#) [PLT10HH501100PNB](#) [PLT10HH401100PNB](#) [PLT10HH1026R0PNB](#) [PE-67531](#) [EXC-X4CH120X](#)
[TLH10UB](#) [113 0R5](#) [2752041447](#) [2752045447](#) [CMS3-11-R](#) [7351V](#) [CMF16-153131](#) [744252510](#) [T8116NLT](#) [FE2X10-4-2NL](#) [744253200](#)
[744253101](#) [744252220](#) [TX8111NLT](#) [UAL30VR3500470](#) [CTX01-19077-R](#) [T8003NLT](#) [CTX01-13663](#) [CTX66-19521-R](#) [7446630047](#)
[RC212-0.25-47M](#) [RC112-0.4-15M](#)