



Quality Products. Service Excellence.

# Tube Driver - Interstage 124 Series

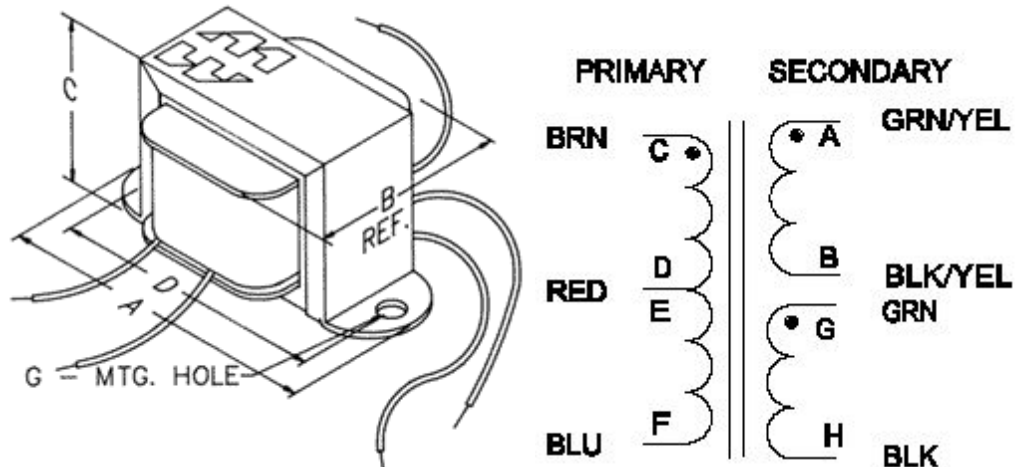
## Features



- Designed for general purpose or replacement use in push-pull or phase inverter tube driver circuits.
- Should not be used for single ended applications. They have no gap for DC bias current present in SE mode.
- Open style with minimum 5" long primary leads.
- Minimum frequency response 150 Hz. - 15 kHz (+1 /- 3db) @1 kHz.
- Our part number **124B** is the same as our **124A** except for 49% Nickel laminations for greater fidelity.
- Our part number **124C** (below) is the COIL ONLY (for those experimenters who want to use their own "iron").
- If you are looking to replace Radiola III-A audio transformers, check out our **universal radiola replacement unit**.

## Hookup Data

- For Parallel connected operation (33.8K Ohm Secondary):
  - Connect the GRN/YEL wire to the GRN wire AND the BLK/YEL wire to the BLK wire.
- For Series connected operation (135K Ohm Secondary):
  - Connect the BLK/YEL wire to the GRN (this becomes the center tap) - GRN/YEL and BLK wires are the output.



Part No.	Primary			Secondary			Dimensions					
	Audio Watts	Impedance (Ohms)	D.C. Resistance (Ohms)	Impedance (Ohms)	D.C. Resistance (Ohms)	Winding	Laminations	A	B	C	D	G Mtg Hole
124A	5	10K	403	90K C.T.	1524	C.T.	Grain Oriented Steel	2.38	1.35	1.43	2.00	0.19
124B	5	10K	403	90K C.T.	1500	C.T.	49% Nickel	2.38	1.35	1.43	2.00	0.19
124C	5	10K	403	90K C.T.	1524	C.T.	None-Coil Only	-	-	-	-	-

Part No.	Audio Watts	Primary		Secondary		Winding	Laminations	Dimensions				G Mtg Hole
		Impedance (Ohms)	D.C. Resistance (Ohms)	Impedance (Ohms)	D.C. Resistance (Ohms)			A	B	C	D	
124D	5	7K C.T.	454	15.8K C.T.	681	C.T.	Grain Oriented Steel	2.81	1.46	1.68	2.38	0.19
124E	5	15K C.T.	728	33.8K/135K	3880	Dual	Grain Oriented Steel	2.88	1.74	2.37	2.38	0.19
124F	5	15K C.T.	900	3.75K / 15K	899.6	Dual	Grain Oriented Steel	2.88	1.75	2.37	2.38	0.19

*Data subject to change without notice*

© 2021. Hammond Manufacturing Ltd. All rights reserved.

## X-ON Electronics

Largest Supplier of Electrical and Electronic Components

*Click to view similar products for [Hammond manufacturer](#):*

Other Similar products are found below :

[001151](#) [001150-10](#) [PCJ1084CCNLF](#) [PCJ12106NLF](#) [PCJ864CC](#) [PCJ864CCHF](#) [PCJ864CCLF](#) [PCJ864LF](#) [60TYHW](#) [CS1084](#) [CSKO884](#)  
[CSP4936LG1](#) [CSP5636BK1](#) [CSP8531LG1](#) [CST374](#) [CST6604](#) [M268-5](#) [CWST1096NK](#) [CWTL2](#) [712](#) [718](#) [728](#) [ESP2416](#) [ESP4236](#)  
[ESP4824](#) [72WFWG](#) [72ZWFWG](#) [72ZWHW](#) [732A](#) [733A](#) [735](#) [FAN10A220](#) [MHK3SS](#) [FRCMCH128](#) [FT900TA1220BK](#) [PF32000T12BK24](#)  
[PF6500AT12LG](#) [PHW241210](#) [PHW30208](#) [PHW483616](#) [90BWHW](#) [90YFWG](#) [90YWFW](#) [PJ1084P9](#) [PJ1086RHW](#) [PJ14126RLW](#)  
[PJ14126RTW](#) [PJ16148RLW](#) [PJ16148TW](#) [PJ18168RW](#)