



Quality Products. Service Excellence.

## Type 4X/ 6P Diecast Aluminum Enclosures 1590Z Series

Watertight, Thick Wall, UL Listed

### Key Features:

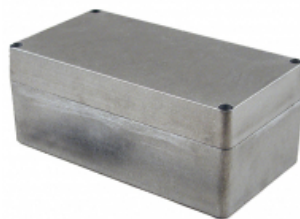


- Rugged, diecast aluminum alloy (tough yet easy to machine), electronic instrument enclosure.
- Two piece "tongue & groove" construction with a replaceable one-piece silicone rubber gasket provides protection against access of dust and water. Gasket supplied loose inside the enclosure (not pre-installed).
- Gasket has a temperature rating of -40C to +150C
- Ideal for repetitive opening and closing.
- Four recessed stainless steel machine screws secure lid into tapped holes.
- Easy to wall mount using "through box - blind hole" construction, outside of gasket protection.
- Lid screws are self capturing (lid holes are threaded with the first installation of lid screws). (NOTE: Except for **1590Z060**, **1590Z061**, **1590Z062**, and **1590Z063**)
- Designed to meet IP68.
- North American Mark of Safety - cUL & UL listed. Certified to Type 4, 4X, 6, 6P.
- All sizes except 1590Z060\*\* carry an impact rating of IK08 per IEC62262
- 16ga galvanized steel inner panels are available for most sizes, and are sold separately (refer to table below).
- Painted versions are painted inside and out with a tough powder paint. Choice of textured black or smooth gray (RAL 7001).
- For non-metallic (glass reinforced polyester) versions of these enclosures, see series **1590ZGRP**



### Photos

Available unfinished or powder coated in textured black or smooth gray.





Lid screws are self capturing (lid is threaded with first installation of screws)

Lid screws and wall mounting holes are outside the gasket channel.

Inner panels are available for most sizes and are sold separately.

### Accessories

- Pole Mount Kit
- Breather Kit
- Liquid-Tight, Strain Relief Cordgrips
- Pressure Compensation Plug
- Small Rainproof Ventilator

### Enclosure

1590Z060	Natural	NO	1.98	1.77	1.20	0.24	SC1550Z103-50		SCG060-50	1590Z060G
1590Z060BK	Black	NO	1.98	1.77	1.20	0.24	SC1550Z103-50		SCG060-50	1590Z060G
1590Z060GY	Gray	NO	1.98	1.77	1.20	0.24	SC1550Z103-50		SCG060-50	1590Z060G
1590Z061	Natural	NO	2.51	2.29	1.39	0.20	SC1550Z103-50		SCG060-50	1590Z061G
1590Z061BK	Black	NO	2.51	2.29	1.39	0.20	SC1550Z103-50		SCG060-50	1590Z061G
1590Z061GY	Gray	NO	2.51	2.29	1.39	0.20	SC1550Z103-50		SCG060-50	1590Z061G
1590Z100	Natural	YES	2.94	3.14	2.05	0.47	SC576-50	1590Z100PL	SCGM4-50	1590Z100G
1590Z100BK	Black	YES	2.94	3.14	2.05	0.47	SC576-50	1590Z100PL	SCGM4-50	1590Z100G
1590Z100GY	Gray	YES	2.94	3.14	2.05	0.47	SC576-50	1590Z100PL	SCGM4-50	1590Z100G
1590Z110	Natural	NO	2.94	3.14	2.05	0.47	SC576-50		SCGM4-50	1590Z100G
1590Z110BK	Black	NO	2.94	3.14	2.05	0.47	SC576-50		SCGM4-50	1590Z100G
1590Z110GY	Gray	NO	2.94	3.14	2.05	0.47	SC576-50		SCGM4-50	1590Z100G
1590Z062	Natural	NO	3.87	2.54	1.35	0.36	SC1550Z103-50		SCG060-50	1590Z062G
1590Z062BK	Black	NO	3.87	2.54	1.35	0.36	SC1550Z103-50		SCG060-50	1590Z062G
1590Z062GY	Gray	NO	3.87	2.54	1.35	0.36	SC1550Z103-50		SCG060-50	1590Z062G
1590Z080	Natural	YES	3.94	3.94	3.15	0.79	SC576-50	1590Z080PL	SCGM4-50	1590Z080G
1590Z080BK	Black	YES	3.94	3.94	3.15	0.79	SC576-50	1590Z080PL	SCGM4-50	1590Z080G
1590Z080GY	Gray	YES	3.94	3.94	3.15	0.79	SC576-50	1590Z080PL	SCGM4-50	1590Z080G
1590Z119	Natural	YES	4.80	4.72	3.23	0.81	SC564-12	1590Z119PL	SCGM6-20	1590Z119G
1590Z119BK	Black	YES	4.80	4.72	3.23	0.81	SC564-12	1590Z119PL	SCGM6-20	1590Z119G
1590Z119GY	Gray	YES	4.80	4.72	3.23	0.81	SC564-12	1590Z119PL	SCGM6-20	1590Z119G
1590Z120	Natural	YES	4.94	3.17	2.31	0.61	SC1550Z107-50	1590Z120PL	SCGM4-50	1590Z120G
1590Z120BK	Black	YES	4.94	3.17	2.31	0.61	SC1550Z107-50	1590Z120PL	SCGM4-50	1590Z120G

1590Z120GY	Gray	YES	4.94	3.17	2.31	0.61	SC1550Z107-50	1590Z120PL	SCGM4-50	1590Z120G
1590Z090	Natural	YES	5.51	5.51	3.54	1.18	SC564-12	1590Z090PL	SCGM6-20	1590Z090G
1590Z090BK	Black	YES	5.51	5.51	3.54	1.18	SC564-12	1590Z090PL	SCGM6-20	1590Z090G
1590Z090GY	Gray	YES	5.51	5.51	3.54	1.18	SC564-12	1590Z090PL	SCGM6-20	1590Z090G
1590Z063	Natural	NO	5.91	2.53	1.43	0.40	SC1550Z103-50		SCG060-50	1590Z063G
1590Z063BK	Black	NO	5.91	2.53	1.43	0.40	SC1550Z103-50		SCG060-50	1590Z063G
1590Z063GY	Gray	NO	5.91	2.53	1.43	0.40	SC1550Z103-50		SCG060-50	1590Z063G
1590Z160	Natural	YES	6.30	6.30	3.53	0.79	SC564-12	1590Z160PL	SCGM6-20	1590Z160G
1590Z160BK	Black	YES	6.30	6.30	3.53	0.79	SC564-12	1590Z160PL	SCGM6-20	1590Z160G
1590Z160GY	Gray	YES	6.30	6.30	3.53	0.79	SC564-12	1590Z160PL	SCGM6-20	1590Z160G
1590Z130	Natural	NO	6.89	3.15	2.05	0.47	SC576-50		SCGM4-50	1590Z130G
1590Z130BK	Black	NO	6.89	3.15	2.05	0.47	SC576-50		SCGM4-50	1590Z130G
1590Z130GY	Gray	NO	6.89	3.15	2.05	0.47	SC576-50		SCGM4-50	1590Z130G
1590Z135	Natural	NO	6.89	3.15	2.36	0.79	SC574-30		SCGM4-50	1590Z130G
1590Z135BK	Black	NO	6.89	3.15	2.36	0.79	SC574-30		SCGM4-50	1590Z130G
1590Z135GY	Gray	NO	6.89	3.15	2.36	0.79	SC574-30		SCGM4-50	1590Z130G
1590Z150	Natural	YES	8.70	4.74	3.17	0.81	SC564-12	1590Z150PL	SCGM6-20	1590Z150G
1590Z150BK	Black	YES	8.70	4.74	3.17	0.81	SC564-12	1590Z150PL	SCGM6-20	1590Z150G
1590Z150GY	Gray	YES	8.70	4.74	3.17	0.81	SC564-12	1590Z150PL	SCGM6-20	1590Z150G
1590Z155	Natural	YES	8.70	4.74	3.54	1.18	SC565-12	1590Z150PL	SCGM6-20	1590Z150G
1590Z155BK	Black	YES	8.70	4.74	3.54	1.18	SC565-12	1590Z150PL	SCGM6-20	1590Z150G
1590Z155GY	Gray	YES	8.70	4.74	3.54	1.18	SC565-12	1590Z150PL	SCGM6-20	1590Z150G
1590Z231	Natural	YES	9.06	7.87	4.33	0.79	SC564-12	1590Z231PL	SCGM6-20	1590Z231G
1590Z231BK	Black	YES	9.06	7.87	4.33	0.79	SC564-12	1590Z231PL	SCGM6-20	1590Z231G
1590Z231GY	Gray	YES	9.06	7.87	4.33	0.79	SC564-12	1590Z231PL	SCGM6-20	1590Z231G
1590Z140	Natural	YES	9.85	3.14	2.24	0.59	SC576-50	1590Z140PL	SCGM6-20	1590Z140G
1590Z140BK	Black	YES	9.85	3.14	2.24	0.59	SC576-50	1590Z140PL	SCGM6-20	1590Z140G
1590Z140GY	Gray	YES	9.85	3.14	2.24	0.59	SC576-50	1590Z140PL	SCGM6-20	1590Z140G
1590Z162	Natural	YES	10.24	6.30	3.53	0.79	SC564-12	1590Z162PL	SCGM6-20	1590Z162G
1590Z162BK	Black	YES	10.24	6.30	3.53	0.79	SC564-12	1590Z162PL	SCGM6-20	1590Z162G
1590Z162GY	Gray	YES	10.24	6.30	3.53	0.79	SC564-12	1590Z162PL	SCGM6-20	1590Z162G
1590Z163	Natural	YES	10.24	6.31	6.30	0.79	SC564-12	1590Z163PL	SCGM6-20	1590Z162G
1590Z163BK	Black	YES	10.24	6.31	6.30	0.79	SC564-12	1590Z163PL	SCGM6-20	1590Z162G
1590Z163GY	Gray	YES	10.24	6.31	6.30	0.79	SC564-12	1590Z163PL	SCGM6-20	1590Z162G
1590Z235	Natural	YES	13.02	9.09	4.42	0.78	SC598-20	1590Z235PL	SCGM6-20	1590Z235G
1590Z235BK	Black	YES	13.02	9.09	4.42	0.78	SC598-20	1590Z235PL	SCGM6-20	1590Z235G
1590Z235GY	Gray	YES	13.02	9.09	4.42	0.78	SC598-20	1590Z235PL	SCGM6-20	1590Z235G
1590Z164	Natural	YES	14.17	4.72	3.15	0.79	SC598-20	1590Z164PL	SCGM6-20	1590Z164G
1590Z164BK	Black	YES	14.17	4.72	3.15	0.79	SC598-20	1590Z164PL	SCGM6-20	1590Z164G
1590Z164GY	Gray	YES	14.17	4.72	3.15	0.79	SC598-20	1590Z164PL	SCGM6-20	1590Z164G
1590Z166	Natural	YES	14.17	6.30	3.54	0.79	SC564-12	1590Z166PL	SCGM6-20	1590Z166G
1590Z166BK	Black	YES	14.17	6.30	3.54	0.79	SC564-12	1590Z166PL	SCGM6-20	1590Z166G
1590Z166GY	Gray	YES	14.17	6.30	3.54	0.79	SC564-12	1590Z166PL	SCGM6-20	1590Z166G
1590Z250	Natural	YES	15.75	9.06	7.09	0.79	SC599-12	1590Z250PL	SCGM6-20	1590Z250G
1590Z250BK	Black	YES	15.75	9.06	7.09	0.79	SC599-12	1590Z250PL	SCGM6-20	1590Z250G
1590Z250GY	Gray	YES	15.75	9.06	7.09	0.79	SC599-12	1590Z250PL	SCGM6-20	1590Z250G

Data subject to change without notice



## X-ON Electronics

Largest Supplier of Electrical and Electronic Components

*Click to view similar products for* [Enclosures, Boxes & Cases](#) *category:*

*Click to view products by* [Hammond](#) *manufacturer:*

Other Similar products are found below :

[585-R-WH-PK](#) [M-10-PLATED](#) [61000-510-000](#) [C-23 Black Kit](#) [M18-PLTD](#) [M-21-PLATED](#) [63310-01-000](#) [6711GSKT](#) [74257-510-000](#) [CNL-0004](#) [MDC-1183-PLAIN-ALUM](#) [MDC-1183-PTD](#) [MDC-13104-PTD](#) [MDC-973-PTD](#) [76](#) [77153-01-028](#) [FLX6030](#) [83535-01-508](#) [90026-501-000](#) [PS36-200](#) [116-508](#) [120-407](#) [120-910](#) [127-908](#) [130-008](#) [1301170079](#) [1322GSKTEP](#) [1325GSKT3](#) [138-PLAIN](#) [1434-1210](#) [1804RP-RB-PK](#) [190-005](#) [2202307](#) [KAB3321](#) [BLACK](#) [KAB3421](#) [2697466](#) [S52213](#) [2901123](#) [2901699](#) [A0645271](#) [A20P20](#) [2106-IR](#) [PERF-850-PLN](#) [G505025B](#) [2790318](#) [2792057](#) [2890386](#) [2906238](#) [2906241](#) [2906254](#) [2907981](#) [H5031](#) [M-10-LID-PLATED](#)