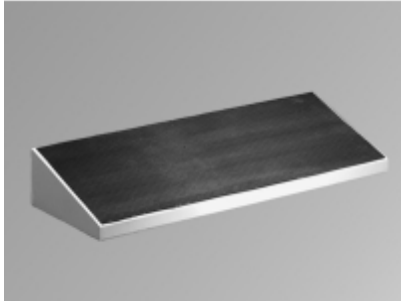


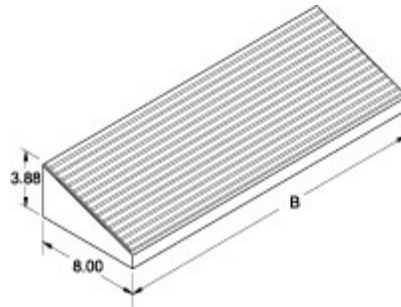


Quality Products. Service Excellence.

Footrest *S2CF Series*



- Generally used in combination with plinth.
- Provides a raised foot support to relieve back stress.
- Gives the installation a "finished" appearance.
- Available in 24", 36", 48" and 60" widths.
- Maintains NEMA rating of system.
- Formed 14 gauge steel.
- Also offered with formed 14 gauge stainless steel.
- Rubber tread for added traction on footrest surface.
- Available in light gray and natural stainless steel.



RAL 7035 Light Gray Part No.	Stainless Steel Part No.	B
2CLF24	2CSF24	24.00
2CLF36	2CSF36	36.00
2CLF48	2CSF48	48.00
2CLF60	2CSF60	60.00

Data subject to change without notice

© 2020. Hammond Manufacturing Ltd. All rights reserved.

X-ON Electronics

Largest Supplier of Electrical and Electronic Components

Click to view similar products for PPE Safety Equipment / Lockout Tagout category:

Click to view products by Hammond manufacturer:

Other Similar products are found below :

[GPSL-8MK-3KEY](#) [GPSL-6KA](#) [GPSL-7KA](#) [GPSL-7LSMK](#) [GPSL-8MKEY](#) [35035](#) [35017](#) [70220-1302](#) [70220-1010](#) [35090](#) [35034](#) [PSL-USBB](#) [PSL-1.5A](#) [35067](#) [PSL-BV1](#) [35010](#) [35012](#) [35011](#) [35015](#) [H9A](#) [PSL-USBA](#) [PSL-GLBN](#) [322-2000](#) [2CLF36](#) [2CLF60](#) [35026](#) [35062](#) [X-ON-MOUSERCAT](#) [PSL-1007](#) [PSL-1009](#) [PSL-1012](#) [PSL-1021](#) [PSL-1028](#) [PSL-1059](#) [PSL-1083](#) [PSL-1080](#) [PSL-10SA](#) [PSL-10SWCA](#) [PSL-11BLK-LS](#) [PSL-11ORNG-LS](#) [PSL-20SA](#) [PSL-20SWCA](#) [PSL-3RED](#) [PSL-3RED-LS](#) [PSL-4SWCA](#) [PSL-5RED-LS](#) [PSL-6BL-LS](#) [PSL-6GR-LS](#) [PSL-6WH-LS](#) [PSL-6YL-LS](#)