



Quality Products. Service Excellence.

ABS Plastic Hand Held Enclosures *1553 Series*

Soft Sided, Ergonomic Comfort, Battery Compartments

Key Features:

- Ergonomically designed for hand-held comfort.
- All sizes except 1553AA and 1553A available with or without battery compartment.
- Molded in general purpose ABS plastic with a soft plastic overmold for comfortable grip.
- Top cover is recessed for membrane display or keypad.
- P.C. board standoffs are molded into case (see drawings or photos for more details).
- Includes removable front panel, except 1553AA and 1553A sizes, and assembly hardware.
- Battery door & compartment version includes 4 battery clips (for 2 - AA batteries) and a 9 volt (PP3) battery clip.
- Gray 1553 series enclosures include nickel plated screws. All other colors use black screws. Refer to product datasheets for correct part numbers.
- P.C. Board mounting screws are not included. Order part number **1593ATS50** (pack of 50) or **1593ATS100** (pack of 100).
- Versions without a battery door are designed to meet IP54 ratings.
- For similar enclosures designed for water-tight applications, try series **1553W**

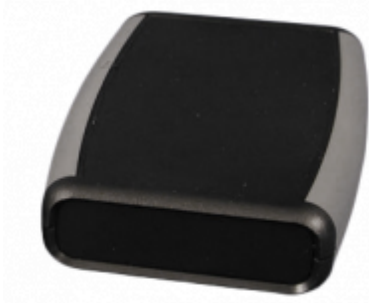


Photo Features:

Perfect for handheld use.



Battery version comes with clips for AA and 9V.



Additional Color Combinations Available



Accessories:



ProtoBoard Printed Circuit Boards:

- High quality FR4 glass epoxy board
- Mounting screws included
- Lead free etched copper PCB with a flux coating for easy soldering
- 0.042" holes drilled on 0.1" centers
- For more information, see the BusBoard Prototype Systems (BPS) website at www.busboard.com
- **Note: not compatible with battery compartment versions**

1553BPCB - designed for 1553 sizes "B" and "C"

1553DBPCB - designed for 1553 size "D"

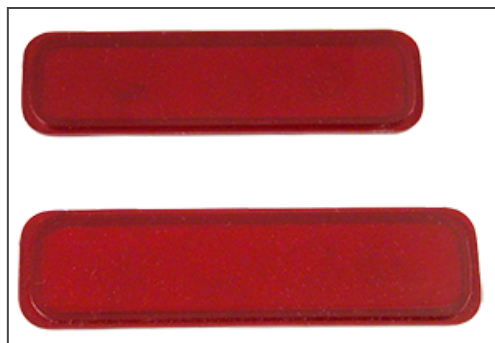


Belt/ Pocket Clip Option:

- Molded from touch nylon
- Includes 2 nylon screws (insulated to avoid interference)
- Mounting Template Included (user drilling required)

1599CLIP (black)

1599CLIPGY (gray)



IR End Panels

- Replaces existing front plastic panel.
- Dark red plastic filter (transparent to IR).

For all 1553 "B" sized enclosures - Part Number **1553BIR-BULK**

For all 1553 "D" sized enclosures - Part Number **1553DIR-BULK**

Single End Panel

Part Number	Enclosure	Overmold	Overall Dimensions			Max. P.C. Board		Replacement
	Color	Color	Length	Width	Depth	Length	Width	Lid Screws
1553AABK	Black	Grey	2.95	1.97	0.67	2.73	1.65	SC1553A100BK
1553AAGY	Grey	Grey	2.95	1.97	0.67	2.73	1.65	SC1553A100
1553ABK	Black	Grey	3.94	2.41	0.67	3.73	1.90	SC1553A100BK
1553AGY	Grey	Grey	3.94	2.41	0.67	3.73	1.90	SC1553A100
1553BBK	Black	Grey	4.62	3.11	0.95	4.30	2.40	1593QS100BK
1553BGY	Grey	Grey	4.62	3.11	0.95	4.30	2.40	1593QS100
1553BBKBK	Black	Black	4.62	3.11	0.95	4.30	2.40	1593QS100BK
1553BTBUBK	Trans Blue	Black	4.62	3.11	0.95	4.30	2.40	1593QS100BK
1553BRDBK	Red	Black	4.62	3.11	0.95	4.30	2.40	1593QS100BK
1553BYLBK	Yellow	Black	4.62	3.11	0.95	4.30	2.40	1593QS100BK
1553CBK	Black	Grey	4.62	3.11	1.30	4.30	2.40	SC1553C100BK
1553CGY	Grey	Grey	4.62	3.11	1.30	4.30	2.40	SC1553C100
1553DBK	Black	Grey	5.80	3.50	0.98	5.48	2.65	1593QS100BK
1553DGY	Grey	Grey	5.80	3.50	0.98	5.48	2.65	1593QS100
1553DBKBK	Black	Black	5.80	3.50	0.98	5.48	2.65	1593QS100BK
1553DTBUBK	Trans Blue	Black	5.80	3.50	0.98	5.48	2.65	1593QS100BK
1553DRDBK	Red	Black	5.80	3.50	0.98	5.48	2.65	1593QS100BK
1553DYLBK	Yellow	Black	5.80	3.50	0.98	5.48	2.65	1593QS100BK

Dual End Panel

Part Number	Enclosure	Overmold	Overall Dimensions			Max. P.C. Board		Replacement
	Color	Color	Length	Width	Depth	Length	Width	Lid Screws
1553BXBK	Black	Gray	4.62	3.11	0.95	4.30	2.40	1593QS100BK
1553BXGY	Grey	Gray	4.62	3.11	0.95	4.30	2.40	1593QS100
1553CXBK	Black	Gray	4.62	3.11	1.30	4.30	2.40	SC1553C100BK
1553CXGY	Grey	Gray	4.62	3.11	1.30	4.30	2.40	SC1553C100
1553DXBK	Black	Gray	5.80	3.50	0.98	5.48	2.65	1593QS100BK
1553DXGY	Grey	Gray	5.80	3.50	0.98	5.48	2.65	1593QS100

With Battery Doors & Compartments

Part Number	Enclosure	Overmold	Overall Dimensions			Max. P.C. Board		Replacement
	Color	Color	Length	Width	Depth	Length	Width	Lid Screws
1553BBKBAT	Black	Gray	4.62	3.11	0.95	3.08	2.40	1593QS100BK
1553BGYBAT	Grey	Gray	4.62	3.11	0.95	3.08	2.40	1593QS100
1553BBKBKBAT	Black	Black	4.62	3.11	0.95	4.30	2.40	1593QS100BK
1553BTBUBKBAT	Trans Blue	Black	4.62	3.11	0.95	4.30	2.40	1593QS100BK
1553BRDBKBAT	Red	Black	4.62	3.11	0.95	4.30	2.40	1593QS100BK
1553BYLBKBAT	Yellow	Black	4.62	3.11	0.95	4.30	2.40	1593QS100BK
1553CBKBAT	Black	Gray	4.62	3.11	1.30	4.30	2.40	SC1553C100BK
1553CGYBAT	Grey	Gray	4.62	3.11	1.30	4.30	2.40	SC1553C100
1553DBKBAT	Black	Gray	5.80	3.50	0.98	4.20	2.65	1593QS100BK
1553DGYBAT	Grey	Gray	5.80	3.50	0.98	4.20	2.65	1593QS100
1553DBKBKBAT	Black	Black	5.80	3.50	0.98	4.20	2.65	1593QS100BK
1553DTBUBKBAT	Trans Blue	Black	5.80	3.50	0.98	4.20	2.65	1593QS100BK
1553DRDBKBAT	Red	Black	5.80	3.50	0.98	4.20	2.65	1593QS100BK
1553DYLBKBAT	Yellow	Black	5.80	3.50	0.98	4.20	2.65	1593QS100BK

Extra End Panels (10-packs)

Enclosure Size	Black	Gray	Red	Translucent Blue	Yellow
1553B	1553BPLBK-10	1553BPLGY-10	1553BPLRD-10	1553BPLTBU-10	1553BPLYL-10
1553C	1553CPLBK-10	1553CPLGY-10			
1553D	1553DPLBK-10	1553DPLGY-10	1553DPLRD-10	1553DPLTBU-10	1553DPLYL-10

Extra Battery Doors (5-packs)

Enclosure Size	Black	Gray	Red	Translucent Blue	Yellow
All 1553's with battery doors	53BATDOORBK- 5	53BATDOORGY- 5	53BATDOORRD- 5	53BATDOORTBU- 5	53BATDOORYL- 5

Tags: **plastic, handheld, rubber sides, PCB, battery, soft sided**

Data subject to change without notice

© 2024. Hammond Manufacturing Ltd. All rights reserved.

X-ON Electronics

Largest Supplier of Electrical and Electronic Components

Click to view similar products for [Battery Enclosures](#) category:

Click to view products by [Hammond](#) manufacturer:

Other Similar products are found below :

[67257-01](#) [MT5.0](#) [G900B CLIP](#) [FC6A-BH1PN02](#) [MB 12225](#) [MF-001LG](#) [MF-001DG](#) [46300000](#) [46600000](#) [FP 10674](#) [FP 22046](#) [18200201](#)
[UH-3](#) [MB 10622](#) [HH-3595-BCB](#) [HH-3595-BCG](#) [MRS 28541](#) [12BH325/C-GR](#) [12BH348/CS-GR](#) [12BH441/C-GR](#) [BHM-3A3](#) [12BH331/C-](#)
[GR](#) [12BH431/C-GR](#) [12BH9V/CS-GR](#) [BHM-4A3](#) [BHF-4A3](#) [BHF-3A3](#) [FI-17 GY](#) [72002001](#) [72002101](#) [72002201](#) [72002301](#) [8120843](#)
[8120845](#) [P33070300](#) [35111005](#) [35111016](#) [AH NEW ALU HINGE](#) [19400101](#) [8120841](#) [DS 10581](#) [CLY.9](#) [MB 10674](#) [8120840](#) [8120842](#)
[8120844](#) [8120846](#) [FP 12017](#) [22010000](#) [CL1 N](#)